

MIDTOWN

NEW YORK
NY

109 EAST 42ND STREET



SPACE DETAILS

LOCATION

North Block between Lexington and Vanderbilt Avenues

APPROXIMATE SIZE

Ground Floor	4,670 SF
Basement	2,170 SF
Total	6,840 SF

FRONTAGE

30 FT on East 42nd Street

TERM

Negotiable

POSSESSION

Immediate

SITE STATUS

Currently Bolton's

NEIGHBORS

Baked by Melissa, Christi Sothers, Duane Reade, Juice Generation, Cipriani, Pret A Manger, Chase Bank, Café Grumpy, Bank of America, Starbucks, Verizon Wireless, Bluemercury, Equinox, Maison Kayser, Blink Fitness and Pershing Square

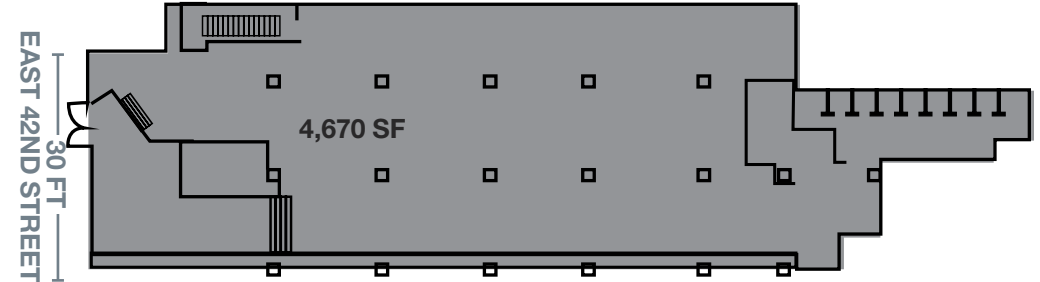
COMMENTS

Prominent retail location steps from one of the most high-traffic intersections in New York City benefiting from tremendous office and tourist population

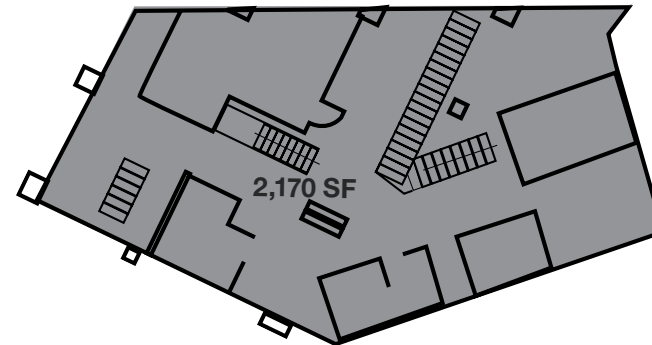
Located at the base of the 1,306-key Grand Hyatt Hotel and directly next to Grand Central Terminal

Situated above the second busiest subway stop in New York City, servicing the **4** **5** **6** **7** **S** subway lines with more than 45 million riders annually

GROUND FLOOR



BASEMENT





LUCAS KOOYMAN
212.372.2384
lkooyman@ngkf.com



NGKF.COM

© 2019 NEWMARK KNIGHT FRANK RETAIL The information contained herein has been obtained from sources deemed reliable but has not been verified and no guarantee, warranty or representation, either express or implied, is made with respect to such information. Terms of sale or lease and availability are subject to change or withdrawal without notice.