

FOR LEASE

WOODRIDGE AT RED RUN

10811 RED RUN BLVD | OWINGS MILLS, MD 21117

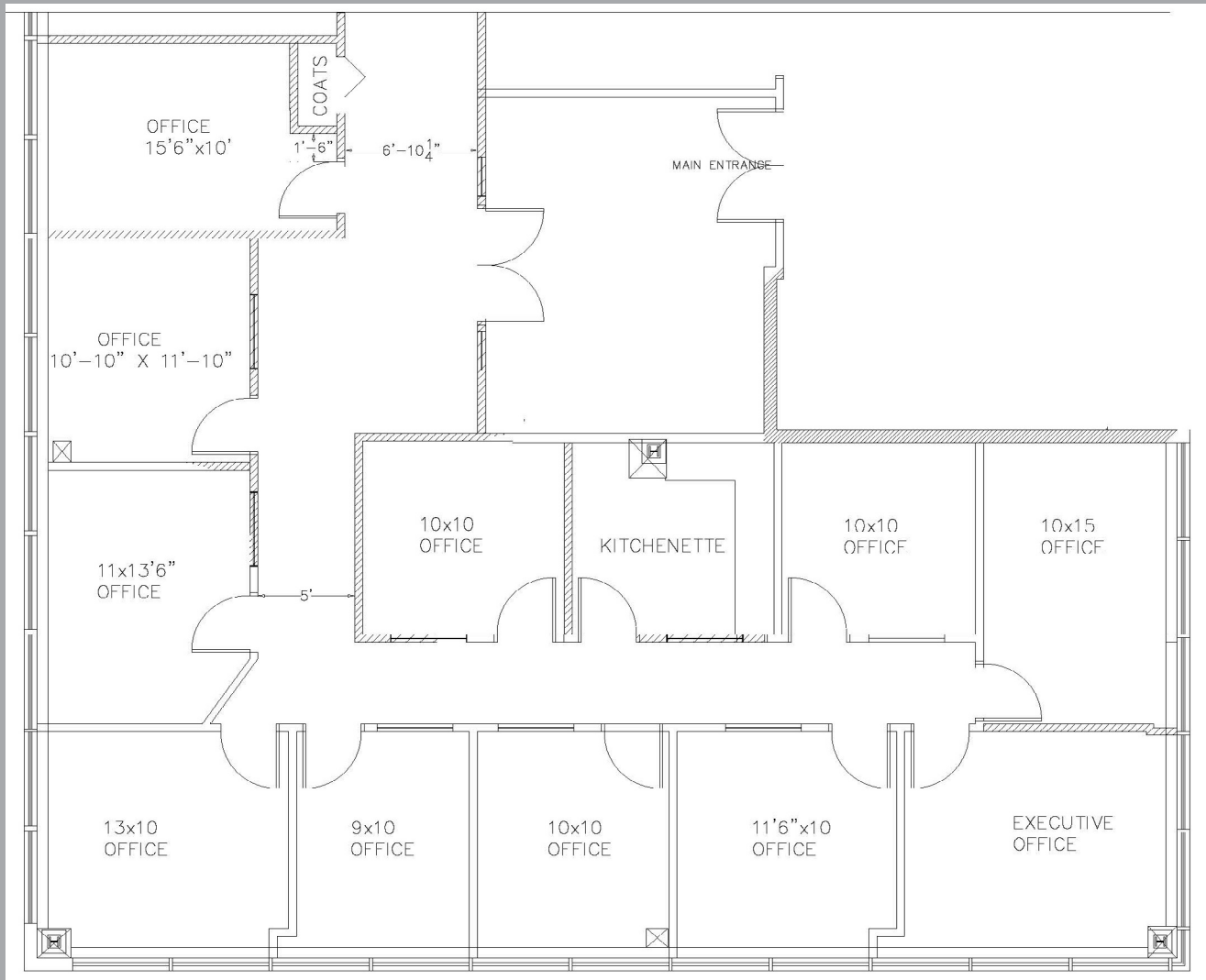
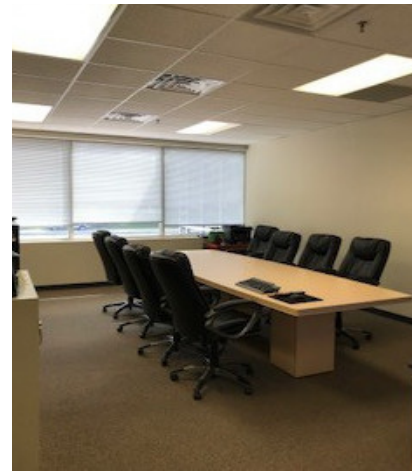


PROPERTY FEATURES

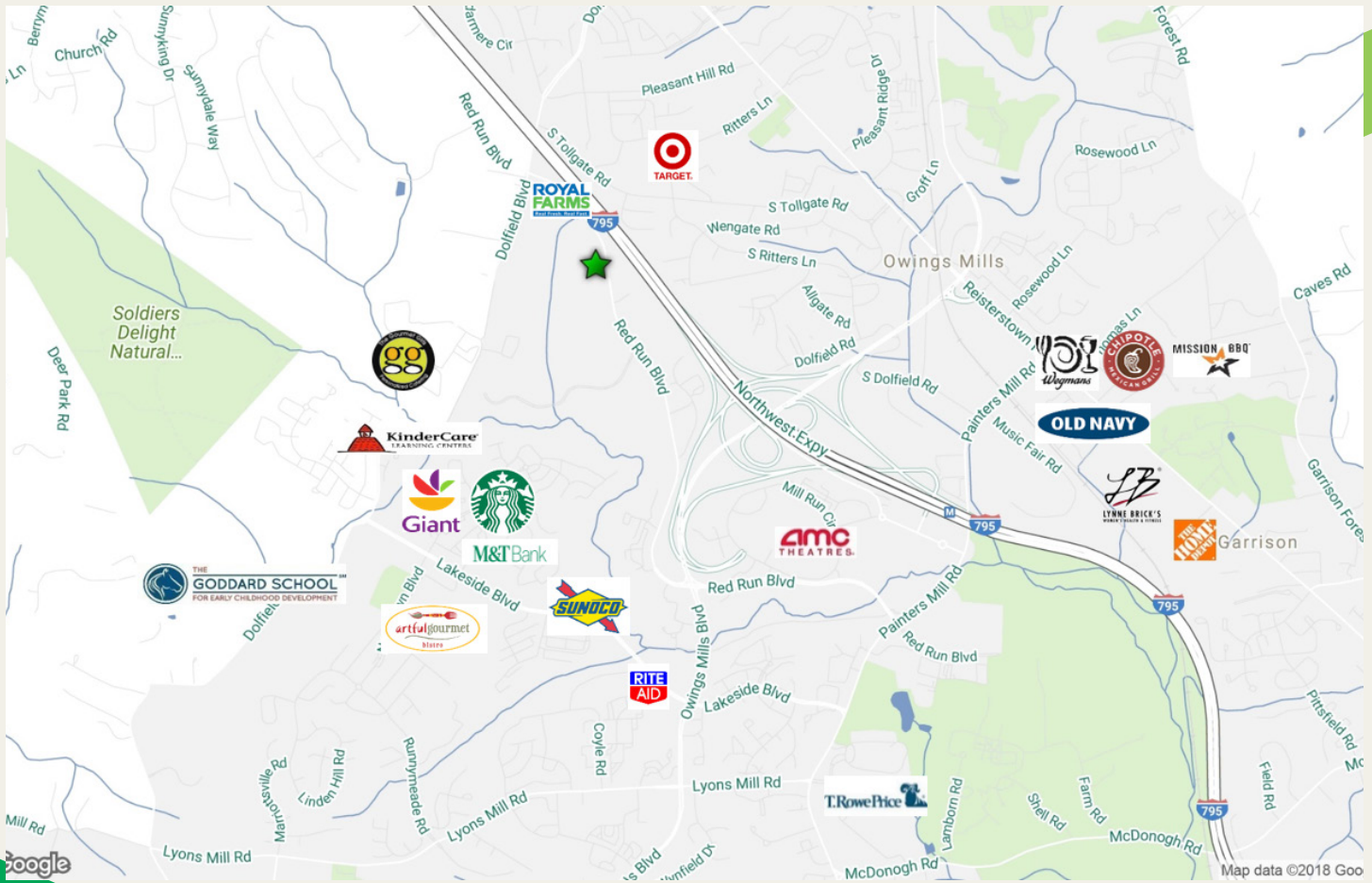
- + Exceptionally maintained landscaping and common areas
- + Easy access to I-795, and short distance to Foundry Row, Metro Center, and Mill Run Station
- + Rental rate: \$23.00/s.f. FS (no increases over base year operating expenses)
- + RBA: 22,500 SF
- + Availability: 2,643 RSF Second Floor
- + New carpeting and other common area upgrades
- + Seal Coat and Parking Lot Striping recently completed: Parking: 6.58/1,000
- + Dumpster provided for use by tenants
- + Building/elevators secured with key fob access during off hours
- + Tenants have 24/7 access to view security cameras located in the common areas & on exterior of building via phone app



North West View of Parking Area



Suite 200



PLEASE CONTACT:

ALAN GRACE

First Vice President
 +1 410 244 3110
 alan.grace@cbre.com

KETCH SECOR

First Vice President
 +1 410 244 3118
 ketch.secor@cbre.com

© 2019 CBRE, Inc. All rights reserved. This information has been obtained from sources believed reliable, but has not been verified for accuracy or completeness. You should conduct a careful, independent investigation of the property and verify all information. Any reliance on this information is solely at your own risk. CBRE and the CBRE logo are service marks of CBRE, Inc. All other marks displayed on this document are the property of their respective owners, and the use of such logos does not imply any affiliation with or endorsement of CBRE. Photos herein are the property of their respective owners. Use of these images without the express written consent of the owner is prohibited.