



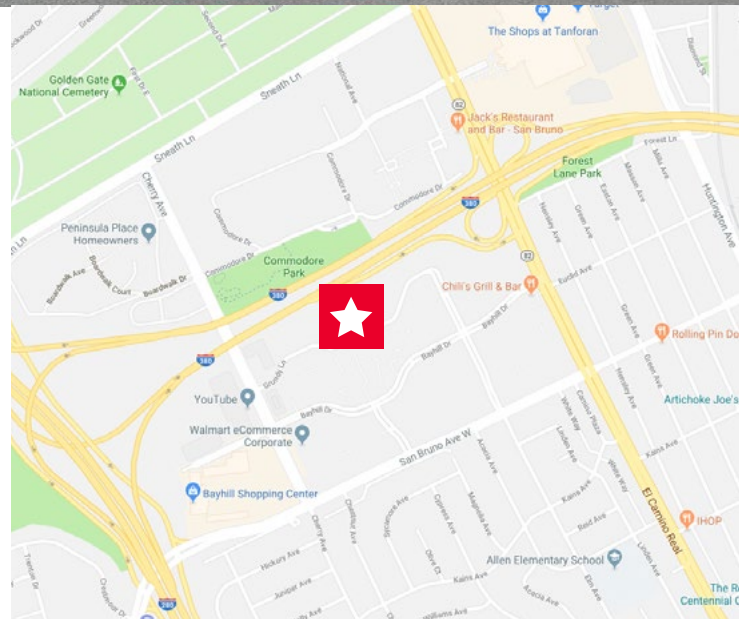
FOR LEASE  
**1250 Grundy Lane**  
San Bruno, California

±20,858 SF OFFICE SPACE FOR LEASE



## Property Highlights

- New High End Construction
- Q1 2019 Occupancy
- First Floor Location
- Open Office Layout Planned
- High Ceiling Height w/ Potential for Open Ceilings
- Wraparound Window Line
- Showers
- Covered Parking
- Tremendous Freeway Visibility & Access
- Rate TBD
- Call to Tour



**Steve Bouret**  
Executive Managing Director  
+1 650 533 7300  
steve.bouret@cushwake.com  
LIC #1189320

**Chris Blom**  
Senior Associate  
+1 650 931 2210  
chris.blom@cushwake.com  
LIC #O2031205

1350 Bayshore Hwy., Suite 900  
Burlingame, CA  
main +1 650 347 3700  
fax +1 650 347 4307  
**cushmanwakefield.com**



**CUSHMAN &  
WAKEFIELD**

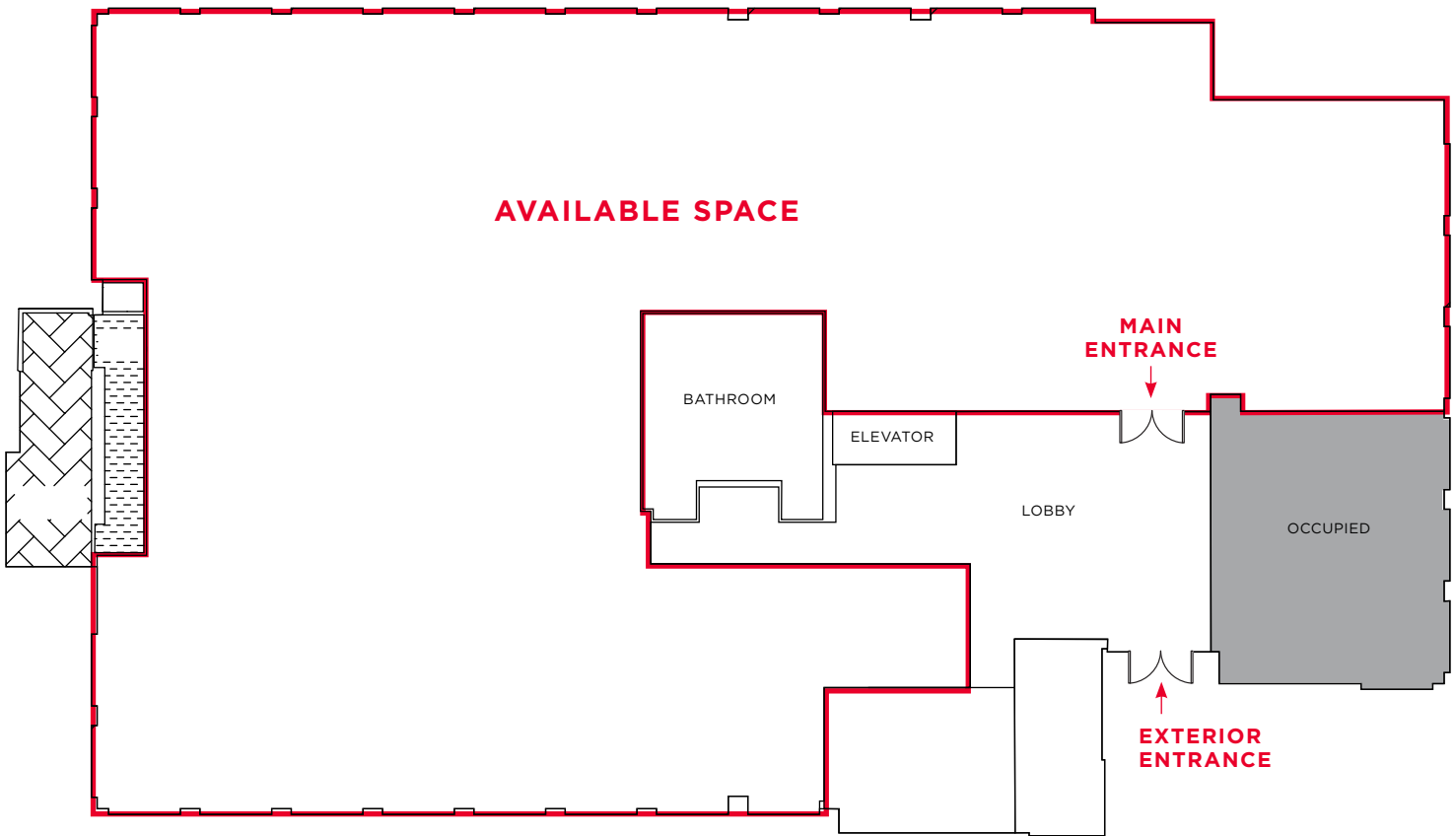
FOR LEASE

**1250 Grundy Lane**

San Bruno, California

**Floor Plan**

±20,858 SF



**Steve Bouret**

Executive Managing Director  
+1 650 533 7300  
steve.bouret@cushwake.com  
LIC #1189320

**Chris Blom**

Senior Associate  
+1 650 931 2210  
chris.blom@cushwake.com  
LIC #02031205

1350 Bayshore Hwy., Suite 900  
Burlingame, CA  
main +1 650 347 3700  
fax +1 650 347 4307  
**cushmanwakefield.com**