



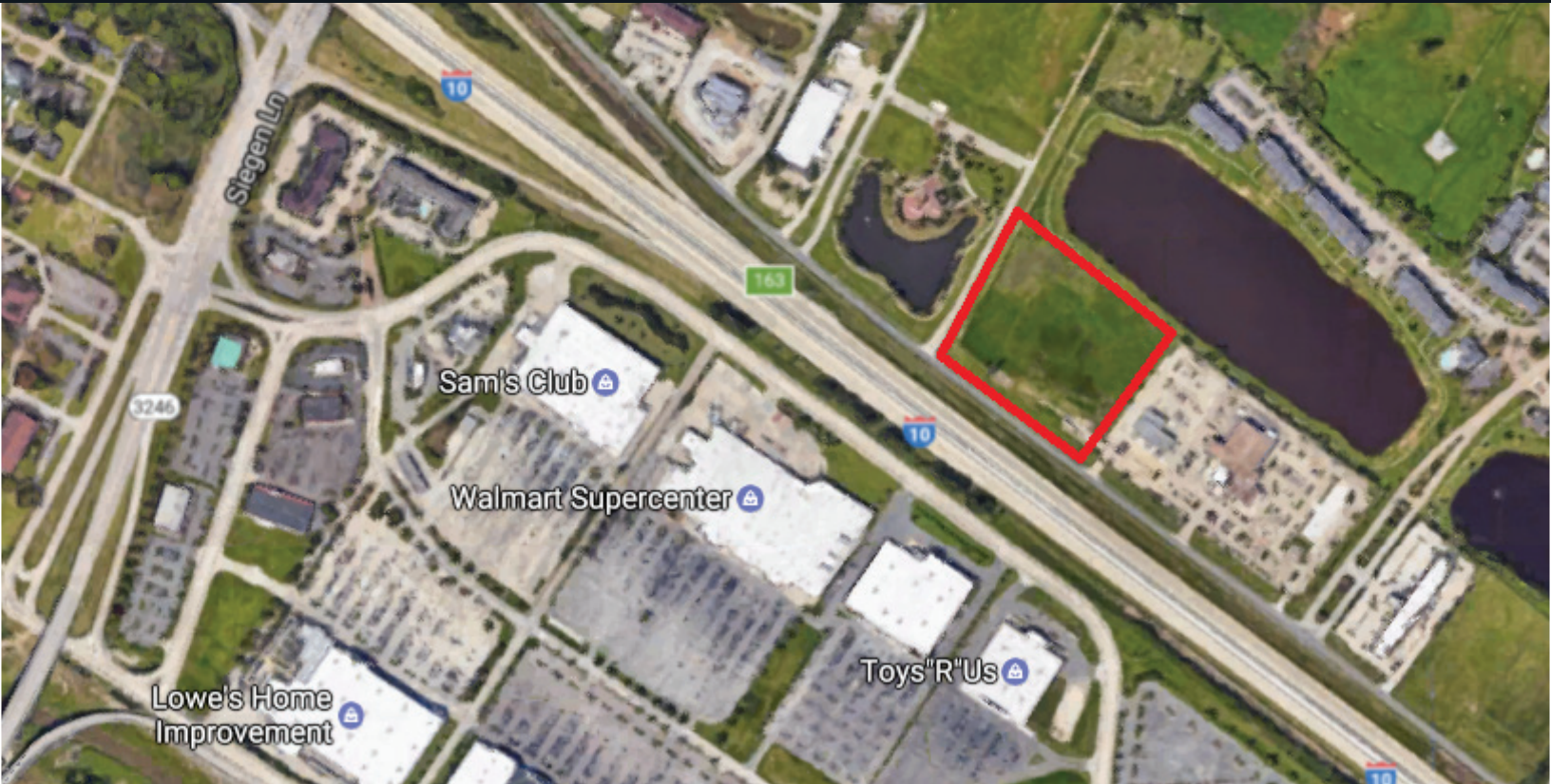
SAURAGE ROTENBERG
COMMERCIAL REAL ESTATE

JACK HERRINGTON

MOBILE: 610 563-9046

OFFICE: 225 766-0000

EMAIL: JACK@SR-CRE.COM



FOR SALE

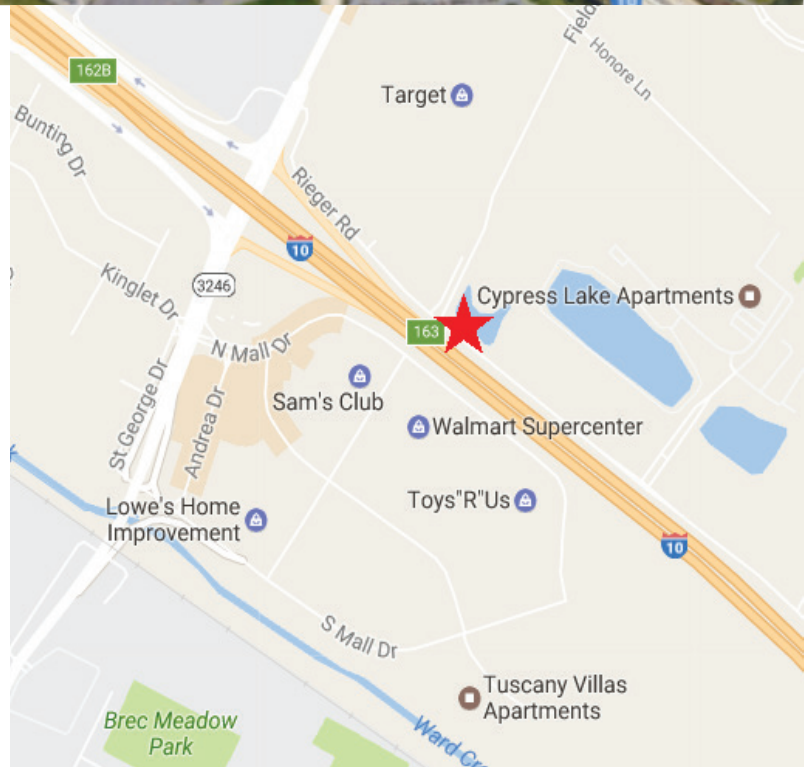
**RIEGER ROAD
BATON ROUGE, LA 70809**

\$8,494,200

6.50 ACRES

HIGHLIGHTS

- 6.5 Acres of Vacant Land Available
- 540 Feet of Frontage
- Excellent Visibility on I-10
- Numerous Hotels Nearby
- Perfect for Retail or Hospitality



SAURAGE ROTENBERG COMMERCIAL REAL ESTATE, LLC

5135 BLUEBONNET BLVD
BATON ROUGE, LA 70809

TEL 225 766-0000
FAX 225 766-2229

WEB SAURAGEROTENBERG.COM

The information contained herein has either been given to us by property owners or is from sources deemed reliable and is believed to be correct, it is not in any way warranted or guaranteed by Saurage Rotenberg Commercial Real Estate. This information is submitted subject to errors, omissions, changes in price, rental or other conditions, withdrawal without notice, and to any special listing conditions imposed by the principals. Licensed in Louisiana.