

C & H Business Park II

8607 219th Street SE, Woodinville, WA

FOR
LEASE



Features

- 22,915 SF available, 2,589 SF of office area
- Divisible to 13,415 SF and 9,500 SF
- Two (2) dock high loading doors
- Five (5) at-grade loading doors
- Ceiling height: 24' clear
- Located near Hwy-9 and Hwy-522; 6 miles to Bothell, Northcreek and Canyon Park
- Concrete tilt-up building
- Zoning: LI, Snohomish County
- Rates: \$0.45/\$1.00 PSF, NNN
- Low triple net charges (\$0.15)



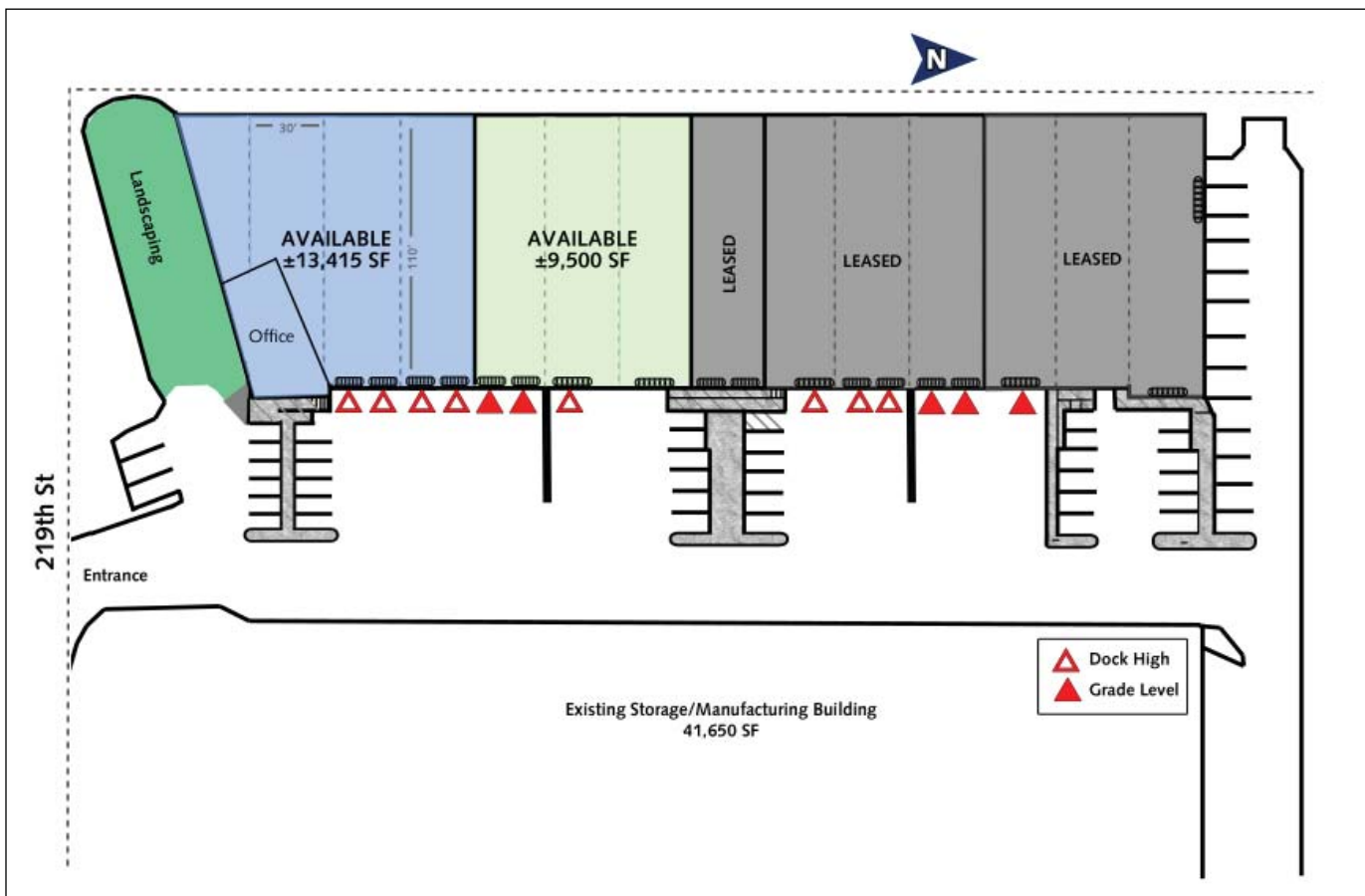
Contact

Roger P. Thorn
425.450.1120
rthorn@gvakm.com
www.gvakm.com

C & H Business Park II

8607 209th Street SE, Woodinville WA

FOR LEASE



Contact

Roger P. Thorn
425.450.1120
rthorn@gvakm.com

www.gvakm.com

This information supplied herein is from sources we deem reliable. It is provided without any representation, warranty or guarantee, expressed or implied as to its accuracy. Prospective Buyer or Tenant should conduct an independent investigation and verification of all matters deemed to be material, including, but not limited to, statements of income and expenses. Consult your attorney, accountant, or other professional advisor.

