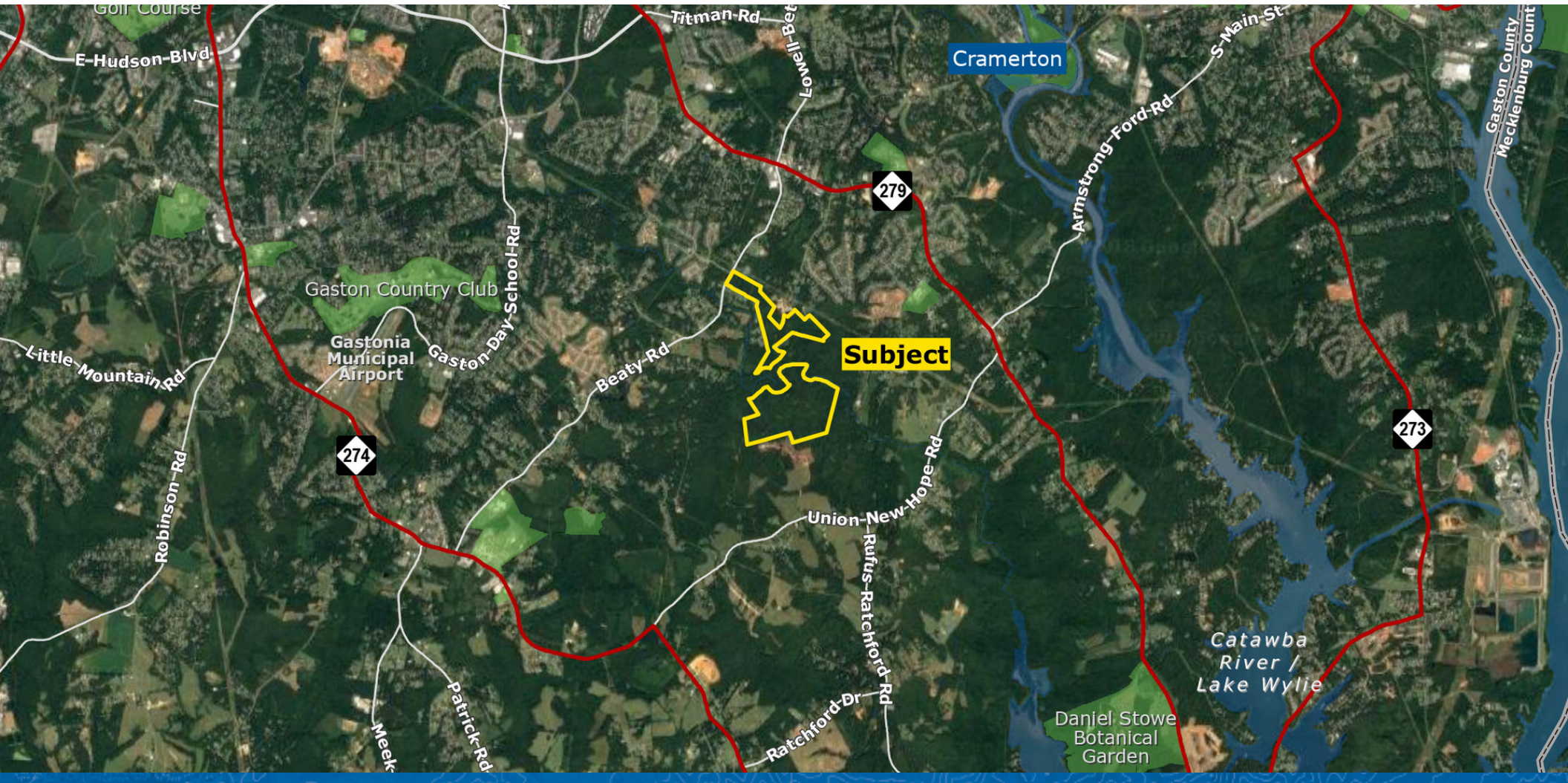


SPRINGHAVEN

EXCLUSIVE LISTING | GASTONIA, NORTH CAROLINA



Forde Britt | fbritt@landadvisors.com

809 W. Hill Street, Charlotte, NC 28208, ph.704.594.7310 | landadvisors.com

The information contained herein is from sources deemed reliable. We have no reason to doubt its accuracy but do not guarantee it. It is the responsibility of the person reviewing this information to independently verify it. This package is subject to change, prior sale or complete withdrawal.

12 21 2018





OFFERING SUMMARY

Sale Price:	\$3,000,000
Size:	±214.0 Acres
Parcels:	215233, 219704, 221749, 221750
Market:	Charlotte
Submarket:	Gaston

PROPERTY OVERVIEW

Located in the Piedmont area of North Carolina, Gaston County is approximately 20 minutes west of Charlotte. It is the third-largest county in the Charlotte region and offers convenient access to the City of Charlotte and Charlotte Douglas International Airport via Interstate 85 and US Highway 321. In just a 4 hour drive, residents of Gaston County can find themselves along the beaches of Charleston, SC or in the Great Smoky Mountains on the North Carolina/Tennessee border.

Rich in history, Gaston County originally found success in textile production and still remains the top county in cotton consumption and in the number of operating spindles. Today, the county is home to a number of businesses in a variety of manufacturing industries.

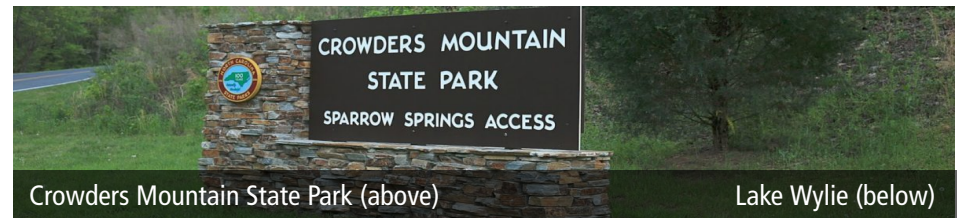
LOCATION

Via 85 South, take Exit 22 and head south on Redbud Road. Turn Left on S. New Hope Road and then Right on Beaty Road. The site will be on your left after less than 1 mile, across from the entrance to Catawba Hills.

SCHOOLS

Forestview & South Point High School districts

SPRINGHAVEN | AREA ATTRACTIONS



AREA ATTRACTIONS

- Stowe Botanical Gardens
- Belmont Abbey College
- Lake Wylie/Catawba River
- The Chronicle Mill Historic Stowe Mill
- Seven Oaks Nature Preserve -- Thread Trail
- Crowders Mountain State Park
- Christmastown, USA in nearby McAdenville
- US National Whitewater Center



SPRINGHAVEN | AREA ATTRACTIONS



Belmont Abbey College



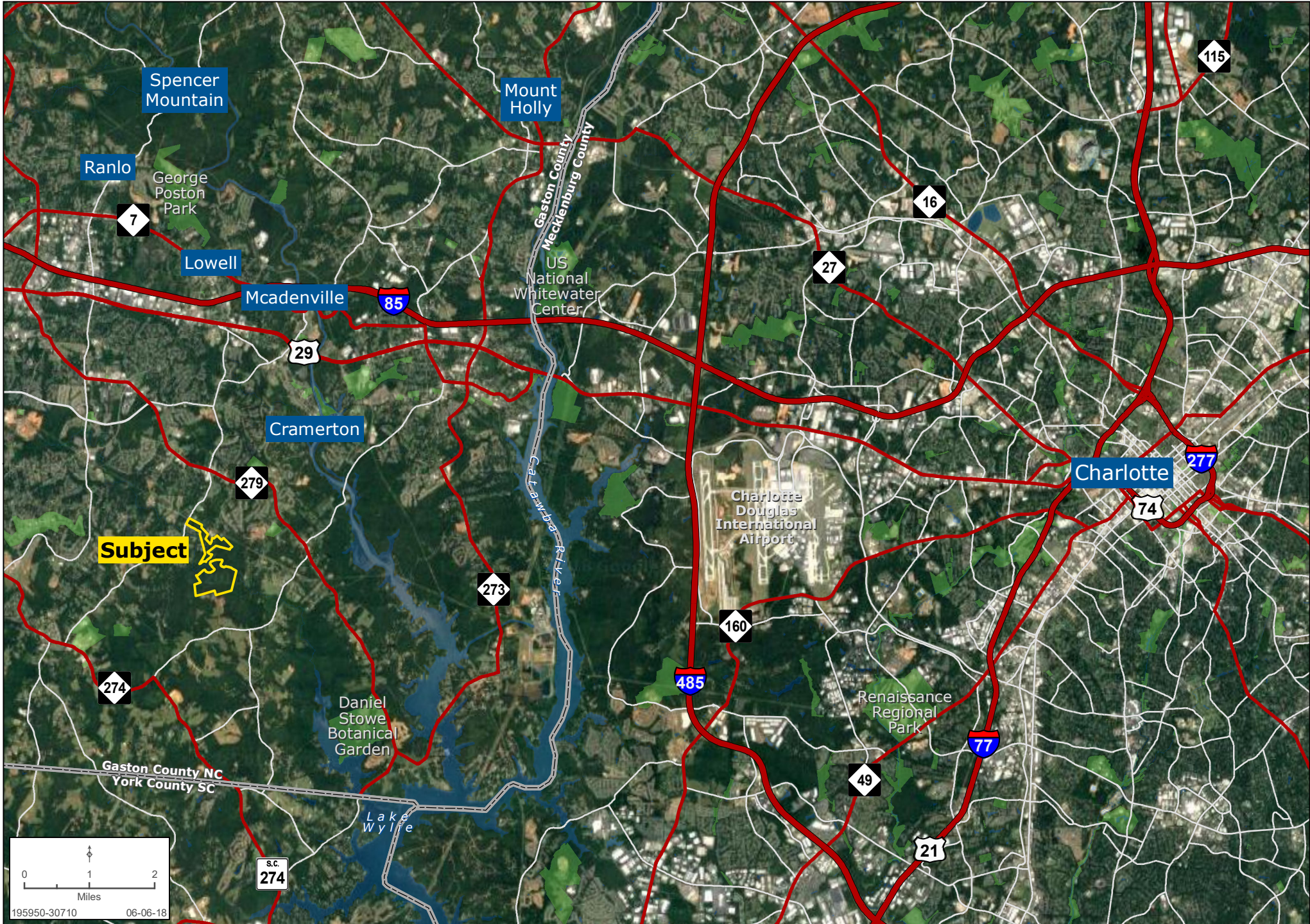
Seven Oaks Nature Preserve -- Thread Trail



Daniel Stowe Botanical Gardens

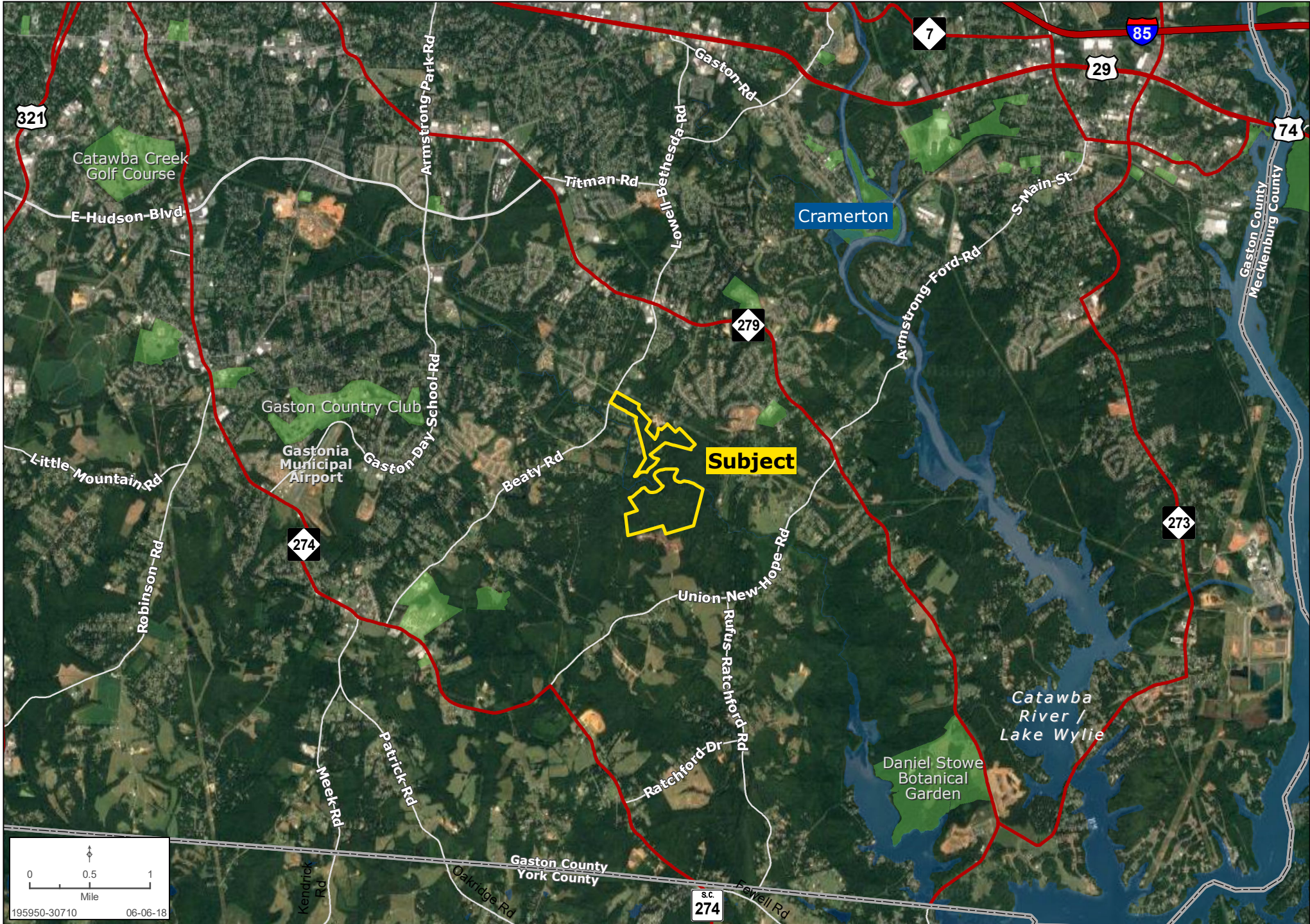
SPRINGHAVEN REGIONAL MAP

Forde Britt | 704.351.3338 | www.landadvisors.com



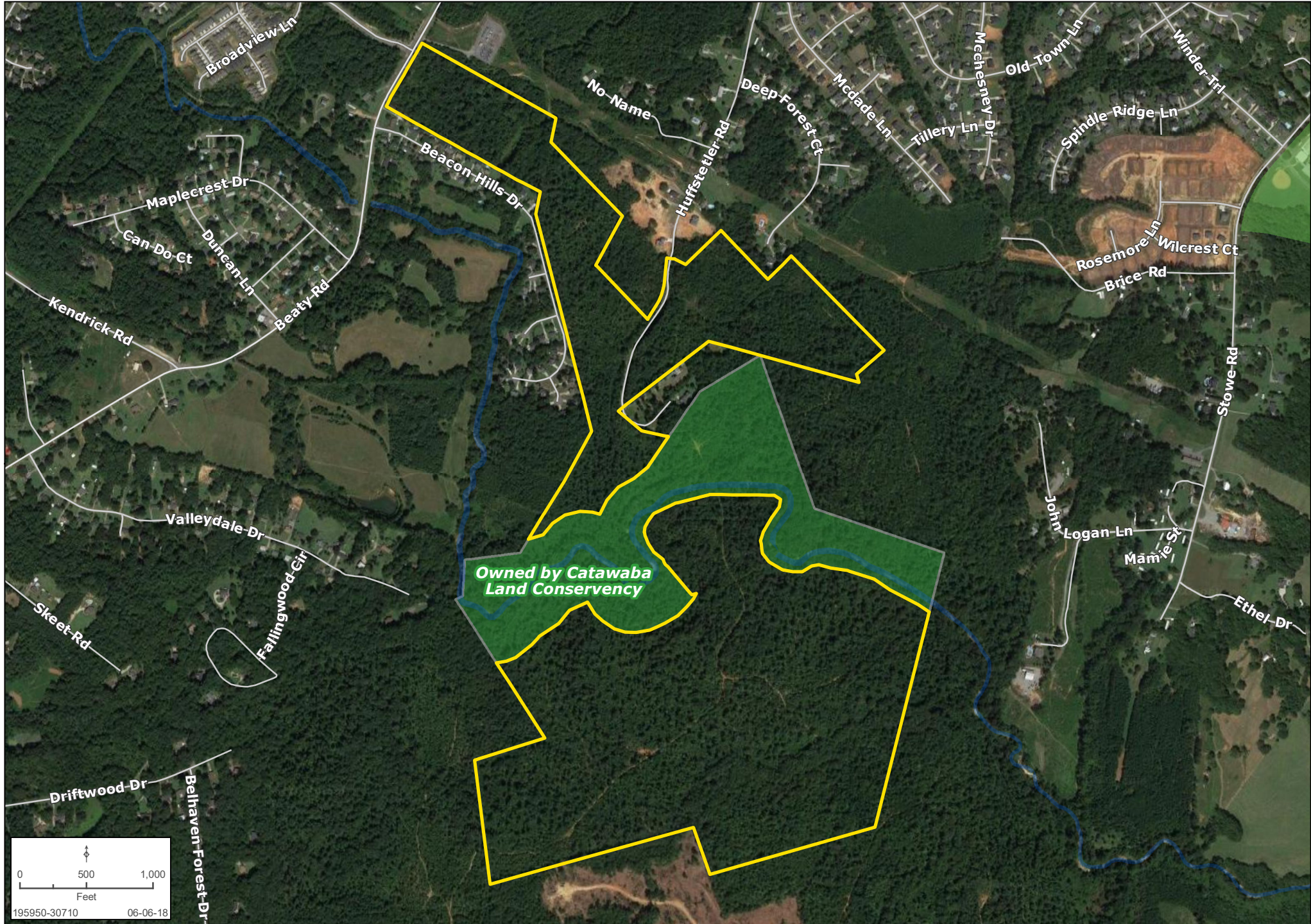
SPRINGHAVEN SURROUNDING AREA MAP

Forde Britt | 704.351.3338 | www.landadvisors.com



SPRINGHAVEN PROPERTY DETAIL MAP

Forde Britt | 704.351.3338 | www.landadvisors.com



SPRINGHAVEN SITEPLAN MAP

Forde Britt | 704.351.3338 | www.landadvisors.com

