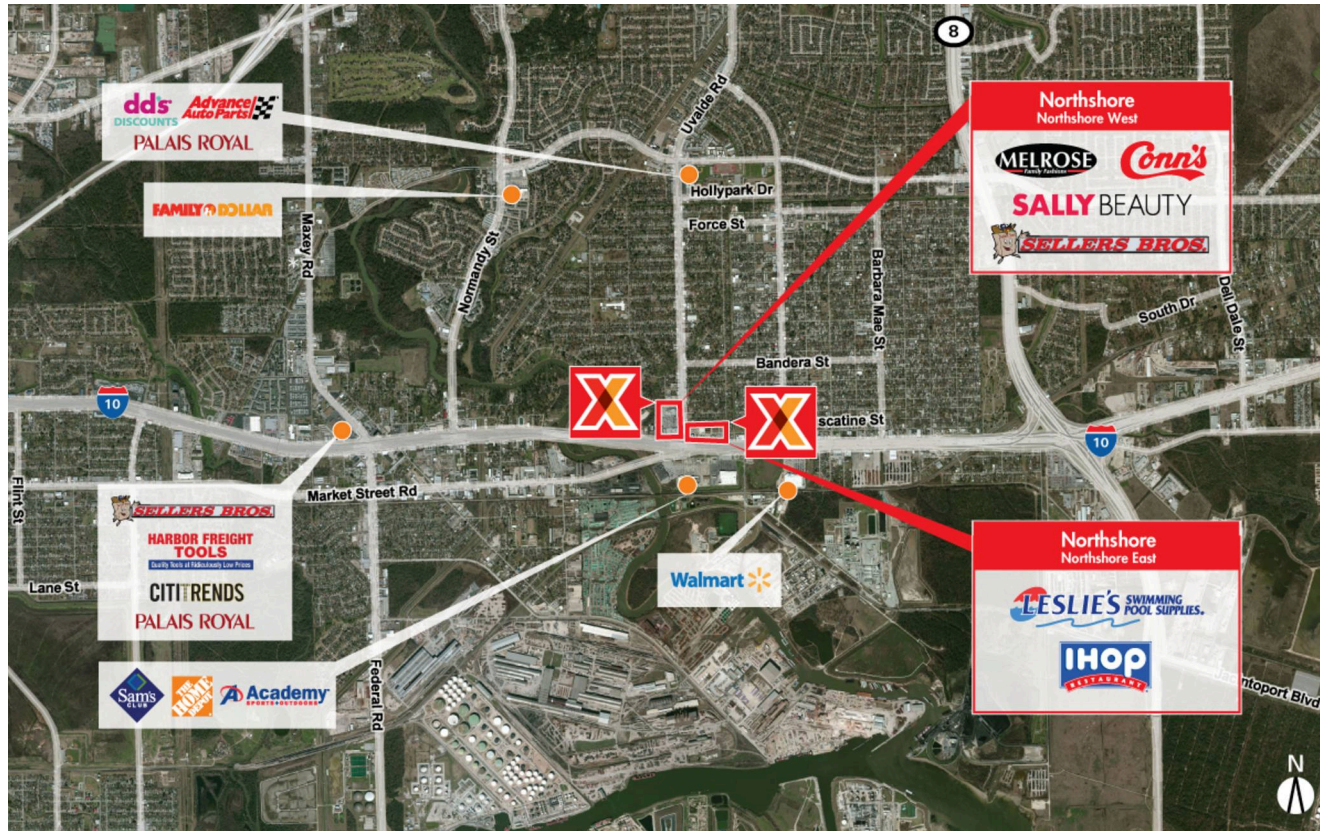


Houston-The Woodlands-Sugar Land, TX
NORTHSHORE

29.772411, -95.187358
 1124-1258 Uvalde Rd | Houston, TX 77015



CENTER SIZE: 223,954 SF



DEMOGRAPHICS	1 MILE	3 MILE	5 MILE
	11,540	91,116	172,755
	3,203	27,468	51,275
	\$46,900	\$56,125	\$56,288

Retail space for lease located North of I-10 (150,000 VPD) at the intersection of Uvalde Rd (24,700 VPD); 11 miles East of downtown Houston

Densely populated area with 91,000+ within a 3-mile radius and an average income of \$56,000+

Daytime demos in excess of 89,000 ppl within 3 miles. due to the large industrial park just south Northshore

Strong lineup of regional and national tenants including Sellers Bros., Melrose and Conn's

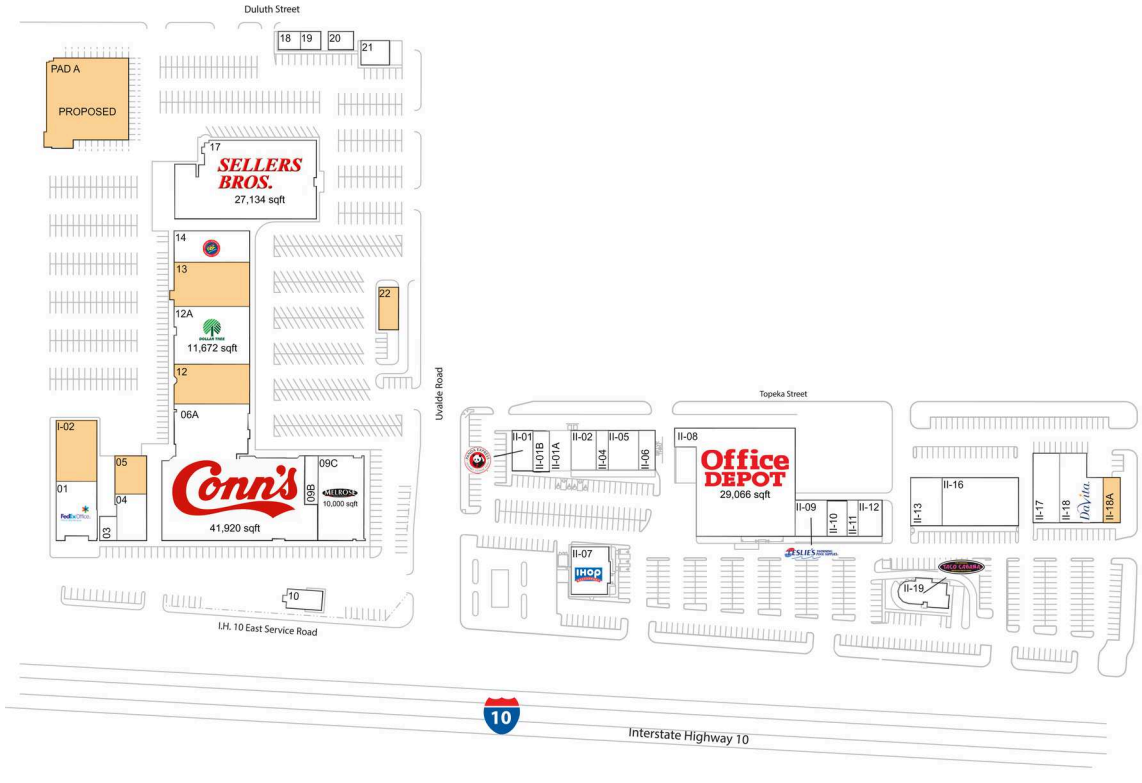
Located across I-10 from the new development with The Home Depot and Academy Sports + Outdoors

Adjacent to the East Houston Regional Medical Center

Pad sites available

Houston-The Woodlands-Sugar Land, TX
NORTHSHORE

29.772411, -95.187358
 1124-1258 Uvalde Rd | Houston, TX 77015



3033 - 02.11.19

AVAILABLE SPACE

I-02	7,000 SF
II-18A	2,100 SF
05	3,088 SF
12	7,180 SF
13	9,360 SF
22	2,356 SF

PAD OPPORTUNITIES

PAD A	.42 AC/ 18,200 SF
-------	----------------------

CURRENT RETAILERS

II-01	Panda Express	2,275 SF
II-01A	Cricket	3,000 SF
II-01B	World Finance	1,204 SF
II-02	Red Wing Shoes	2,600 SF
II-04	ManCave Cutz	1,300 SF
II-05	Vision Max	3,250 SF
II-06	Hobo's Sandwich Shop	1,625 SF
II-07	IHOP	4,552 SF
II-08	Office Depot	29,066 SF
II-09	Leslie's Swimming Pool Supplies	3,200 SF
II-10	NOY Siempre	2,000 SF
II-11	Rudolph Chiropractic	1,100 SF
II-12	Dental Office	2,400 SF
II-13	WIC Program	4,200 SF
II-16	Nova Healthcare	10,200 SF
II-17	Women's Care Center	4,918 SF
II-18	DaVita Dialysis	9,500 SF
II-19	Taco Cabana	3,324 SF
01	FedEx Office	6,000 SF
03	Ace Cash Express	1,200 SF
04	The Smile Store	3,600 SF
06A	Conn's	41,920 SF
09B	Sally Beauty Supply	1,600 SF
09C	Melrose	10,000 SF
10	Shipleys Do-Nuts	2,000 SF
12A	Dollar Tree	11,672 SF
14	Rent-A-Center	4,239 SF
17	Sellers Bros.	27,134 SF
18	Barber Shop	960 SF
19	Boost Mobile	961 SF
20	Agua Pura	1,200 SF
21	Subway	1,836 SF