

**2,315 SF FOR SUBLEASE**

# **PARK PLAZA**

**SUITE 300**

**4350 EXECUTIVE DRIVE • UTC**

San Diego, CA 92121



## **PRIME UTC SUBLEASE OPPORTUNITY**

### **PREMISES**

- + 2,315 SF
- + Sublease term through 1/31/2021
- + \$2.30 per SF monthly asking rate, full service gross
- + Reception, 4 private offices, conference room, break room, and open area
- + Parking ratio: 4/1,000 SF
- + Vacant and available now

### **PROJECT**

- + Westfield UTC Mall within walking distance
- + Wide variety of entertainment, shopping, dining, and a hotel within walking distance
- + Easy access to I-805, I-5, Hwy 52 and Hwy 56

[www.cbre.com](http://www.cbre.com)

**CBRE**

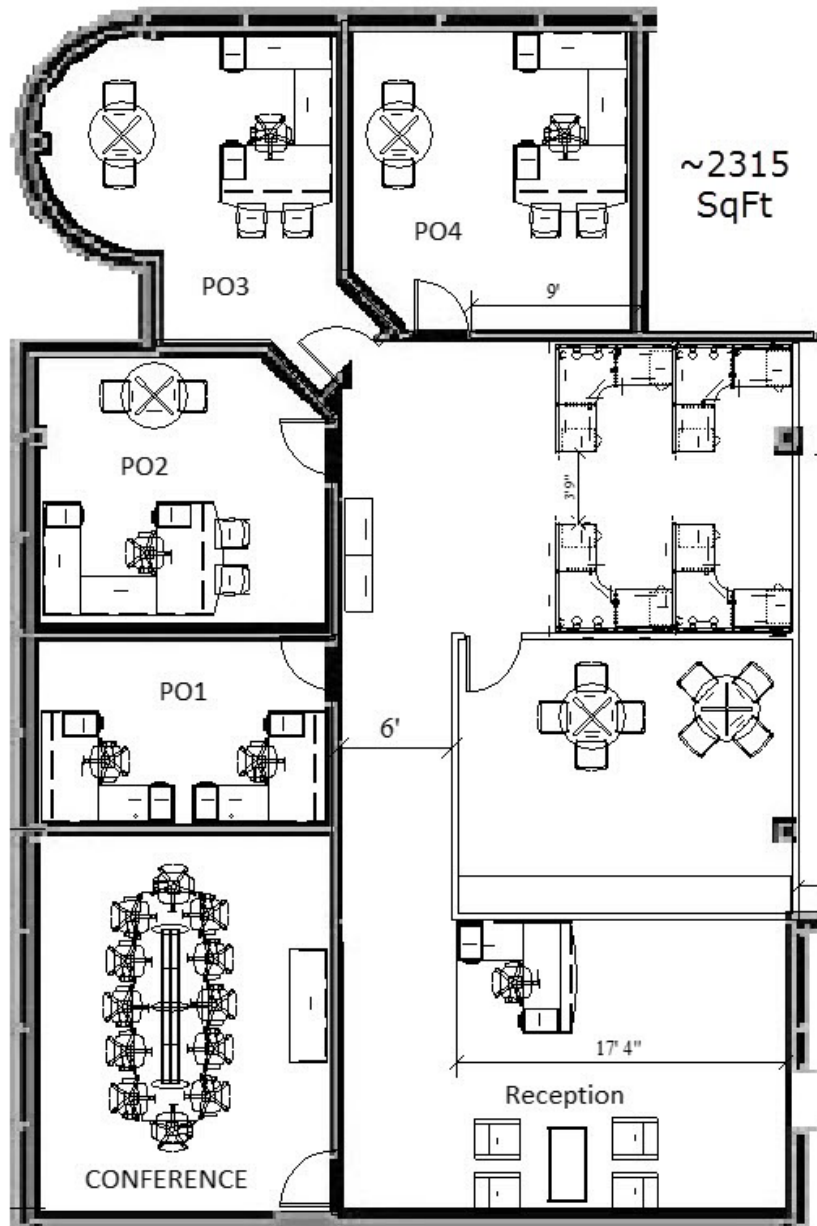
# FOR SUBLEASE PARK PLAZA

SUITE 300  
4350 EXECUTIVE DRIVE  
San Diego, CA 92121



## PREMISES FLOOR PLAN

drawing is approximate and not to scale



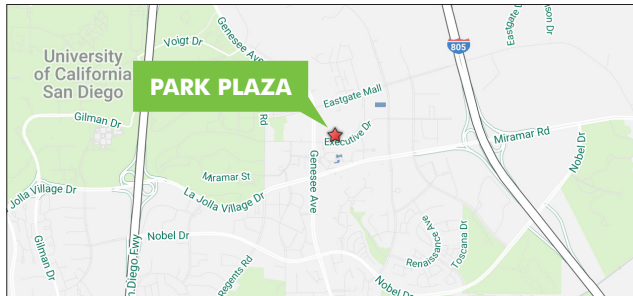
© 2017 CBRE, Inc. This information has been obtained from sources believed reliable. We have not verified it and make no guarantee, warranty or representation about it. Any projections, opinions, assumptions or estimates used are for example only and do not represent the current or future performance of the property. You and your advisors should conduct a careful, independent investigation of the property to determine to your satisfaction the suitability of the property for your needs. Photos herein are the property of their respective owners and use of these images without the express written consent of the owner is prohibited. CBRE and the CBRE logo are service marks of CBRE, Inc. and/or its affiliated or related companies in the United States and other countries. All other marks displayed on this document are the property of their respective owners.

# FOR SUBLEASE **PARK PLAZA**

**SUITE 300**  
**4350 EXECUTIVE DRIVE**  
San Diego, CA 92121



## **SITE MAP**



## **CONTACT US**

### **BRYAN BAZZI**

+1 858 646 4752  
bryan.bazzi@cbre.com  
Lic. 01956099

### **DENNIS HEARST**

+1 858 646 4750  
dennis.hearst@cbre.com  
Lic. 00800238

### **CBRE, INC.**

4365 Executive Drive  
Suite 1600  
San Diego, CA 92121

[www.cbre.com](http://www.cbre.com)

**CBRE**