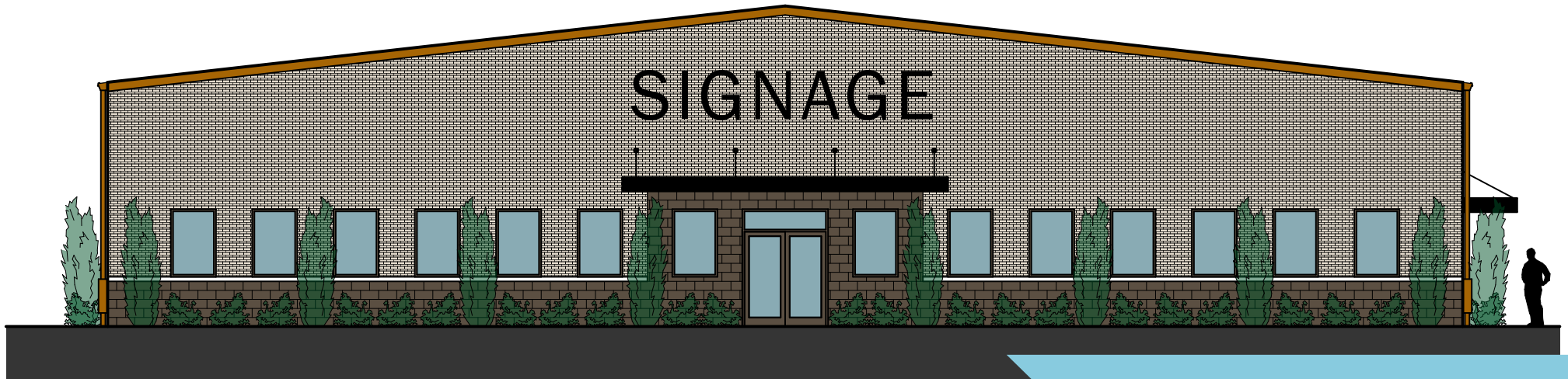


# 5811 ALLENDER RD

5811 Allender Road, Baltimore, MD 21162  
Baltimore County



## FOR LEASE

- **Building Size Total:** ±14,000 square feet
- **Available:** A. 100' X 140'
- **Lot Size:** ±1.0 acre outside storage available
- **Construction:** all block except the 40' x 110' section in portion A is metal
- **Office Area:** 1,000 square feet
- **Loading:** A. 4 drive in doors (12' x 16")
- **Ceiling Height:** A frame style roof is ±18'
- **Electric:** 220 single phase. 3 phase available
- **Zoning:** ML (Light Manufacturing)
- **Heat:** Gas
- **Lease Rate:** \$7.75 Net
- **Remarks:** Hub zone and Enterprise zone qualified. Yard is fenced and outside storage is available.

**Christopher Wright**  
cwright@klnb.com  
443-914-2600

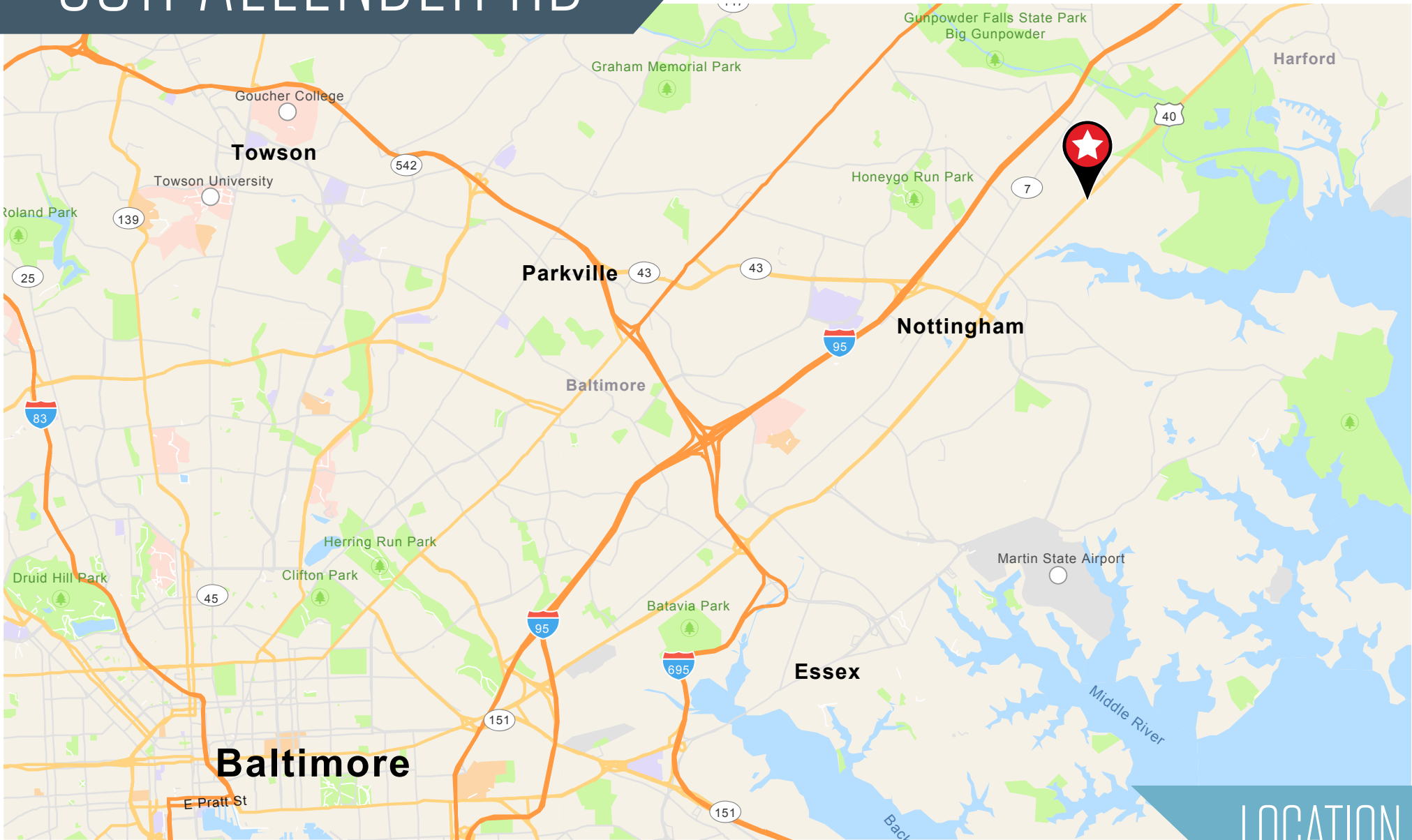
**Mike Mull**  
mmull@klnb.com  
443-632-2063

100 West Road, Suite 505  
Baltimore, MD 21204  
klnb.com

**NAI**klnb

# 5811 ALLENDER RD

5811 Allender Road, Baltimore, MD 21162  
Baltimore County



**Christopher Wright**  
cwright@klnb.com  
443-914-2600

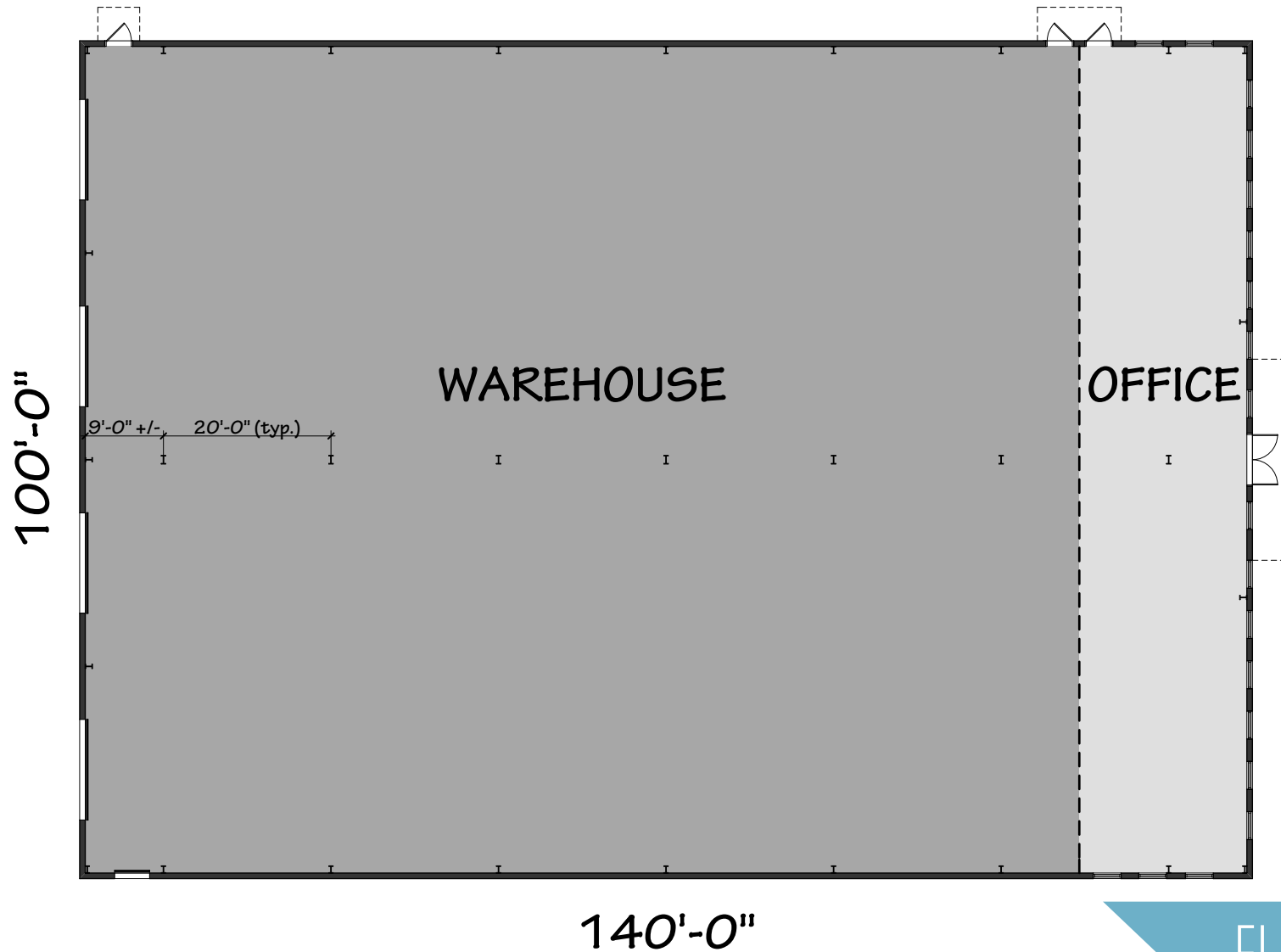
**Mike Mull**  
mmull@klnb.com  
443-632-2063

100 West Road, Suite 505  
Baltimore, MD 21204  
klnb.com



# 5811 ALLENDER RD

5811 Allender Road, Baltimore, MD 21162  
Baltimore County



FLOOR PLAN

**Christopher Wright**  
cwright@klnb.com  
443-914-2600

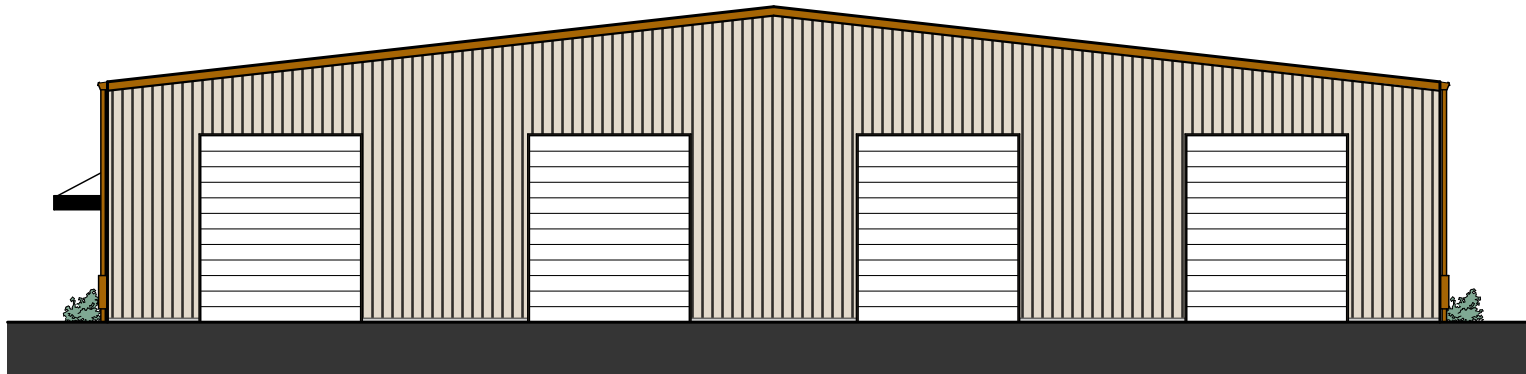
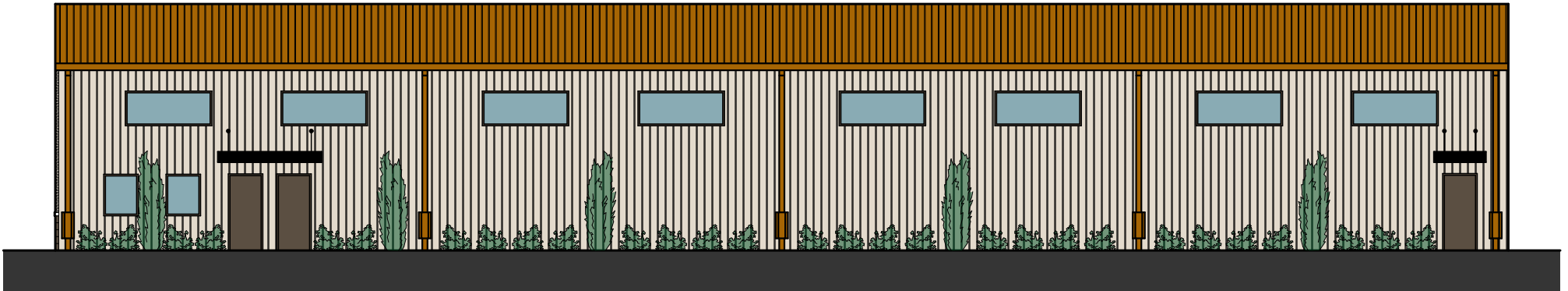
**Mike Mull**  
mmull@klnb.com  
443-632-2063

100 West Road, Suite 505  
Baltimore, MD 21204  
klnb.com



# 5811 ALLENDER RD

5811 Allender Road, Baltimore, MD 21162  
Baltimore County



BUILDING CONCEPT

**Christopher Wright**  
cwright@klnb.com  
443-914-2600

**Mike Mull**  
mmull@klnb.com  
443-632-2063

100 West Road, Suite 505  
Baltimore, MD 21204  
klnb.com

**NAI**klnb

# 5811 ALLENDER RD

5811 Allender Road, Baltimore, MD 21162  
Baltimore County

CLICK TO VIEW PROPERTY WEBSITE

For More Information, Please Contact:

**Christopher Wright**

cwright@klnb.com

443-914-2600

**Mike Mull**

mmull@klnb.com

443-632-2063

100 West Road, Suite 505  
Baltimore, MD 21204

[klnb.com](http://klnb.com)

 [facebook.com/KLNB](https://facebook.com/KLNB)

 [@KLNBLLC](https://twitter.com/KLNBLLC)

 [linkedin.com/company/klnb](https://linkedin.com/company/klnb)

 [instagram.com/klnbllc](https://instagram.com/klnbllc)

While we have no reason to doubt the accuracy of any of the information supplied, we cannot, and do not, guarantee its accuracy. All information should be independently verified prior to a purchase or lease of the property. We are not responsible for errors, omissions, misuse, or misinterpretation of information contained herein and make no warranty of any kind, express or implied, with respect to the property or any other matters.

**NAI** klnb