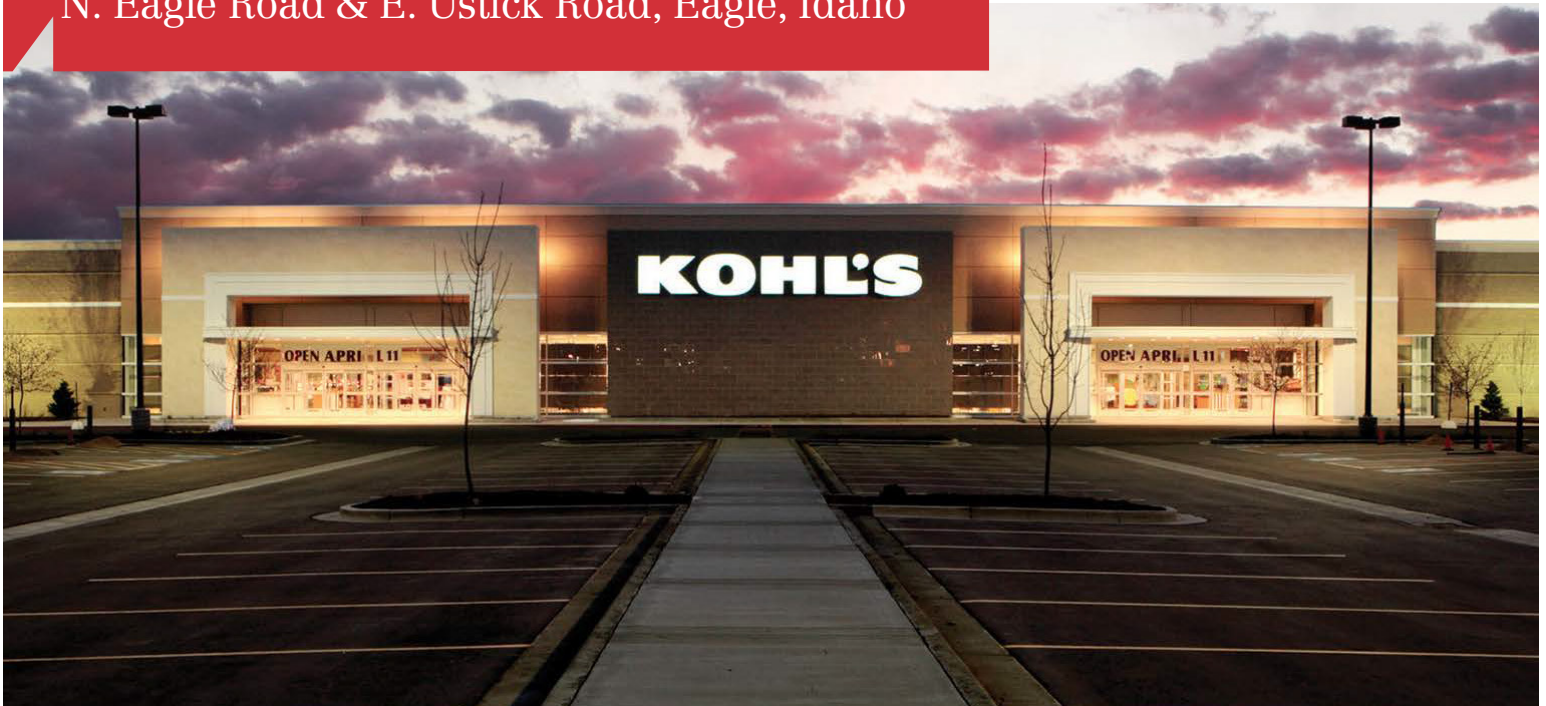


FOR LEASE RETAIL SPACE & PAD

**NAISelect**

# Centrepoint Marketplace

N. Eagle Road & E. Ustick Road, Eagle, Idaho



## Available Property

- Former Restaurant Available: ±1,714 SF
- Retail Pad Available: ±6,000 SF BTS
- Contact agent for details

## Site Information

- Anchored by Kohl's, Dick's, and Hobby Lobby
- 64,000+ cars per day through the intersection
- Great central valley location with excellent visibility
- 2 Signalized access points with additional Eagle Road access



**NAISelect**

5531 N. Glenwood St.  
Boise, Idaho 83714

✉ Mike Erkmann, CCIM  
mike@naiselect.com  
O: 208.229.2020  
D: 208.229.6015

✉ Ben Kneadler  
ben@naiselect.com  
O: 208.229.2020  
D: 208.229.6002

FOR LEASE RETAIL SPACE & PAD

# Centrepoint Marketplace

N. Eagle Road & E. Ustick Road, Eagle, Idaho

# NAISelect

## SUITE 165 - Former Restaurant



- 1,714 SF available - Restaurant Improvements with Hood
- Ample Parking
- Excellent Eagle Road location
- Front building signage
- Lease Rate: \$23.00/SF (NNN)
- CAM Estimate: \$4.81
- Contact Agent for Details

## NAISelect

📍 5531 N. Glenwood St.  
Boise, Idaho 83714

✉ Mike Erkmann, CCIM  
mike@naiselect.com  
O: 208.229.2020  
D: 208.229.6015

✉ Ben Kneadler  
ben@naiselect.com  
O: 208.229.2020  
D: 208.229.6002

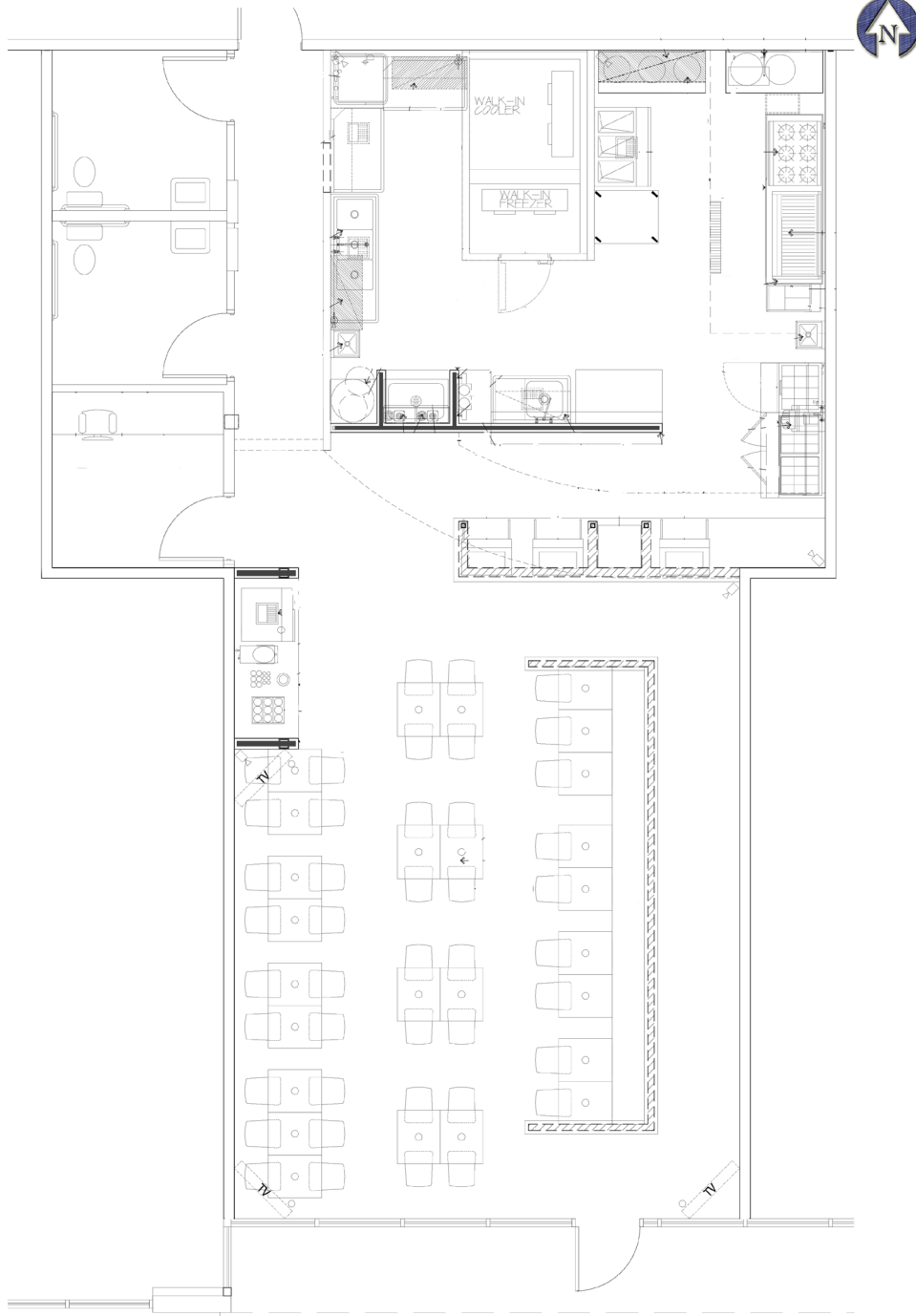
FOR LEASE RETAIL SPACE & PAD

# Centrepoint Marketplace

N. Eagle Road & E. Ustick Road, Eagle, Idaho



## SUITE 165 - Former Restaurant



5531 N. Glenwood St.  
Boise, Idaho 83714

Mike Erkman, CCIM  
mike@naiselect.com  
O: 208.229.2020  
D: 208.229.6015

Ben Kneadler  
ben@naiselect.com  
O: 208.229.2020  
D: 208.229.6002

FOR LEASE RETAIL SPACE & PAD

# Centrepoint Marketplace

N. Eagle Road & E. Ustick Road, Eagle, Idaho



## Available Spaces

SPACE	RATE	SF
165	\$23.00/SF	±1,714



5531 N. Glenwood St.  
Boise, Idaho 83714

Mike Erkmann, CCIM  
mike@naiselect.com  
O: 208.229.2020  
D: 208.229.6015

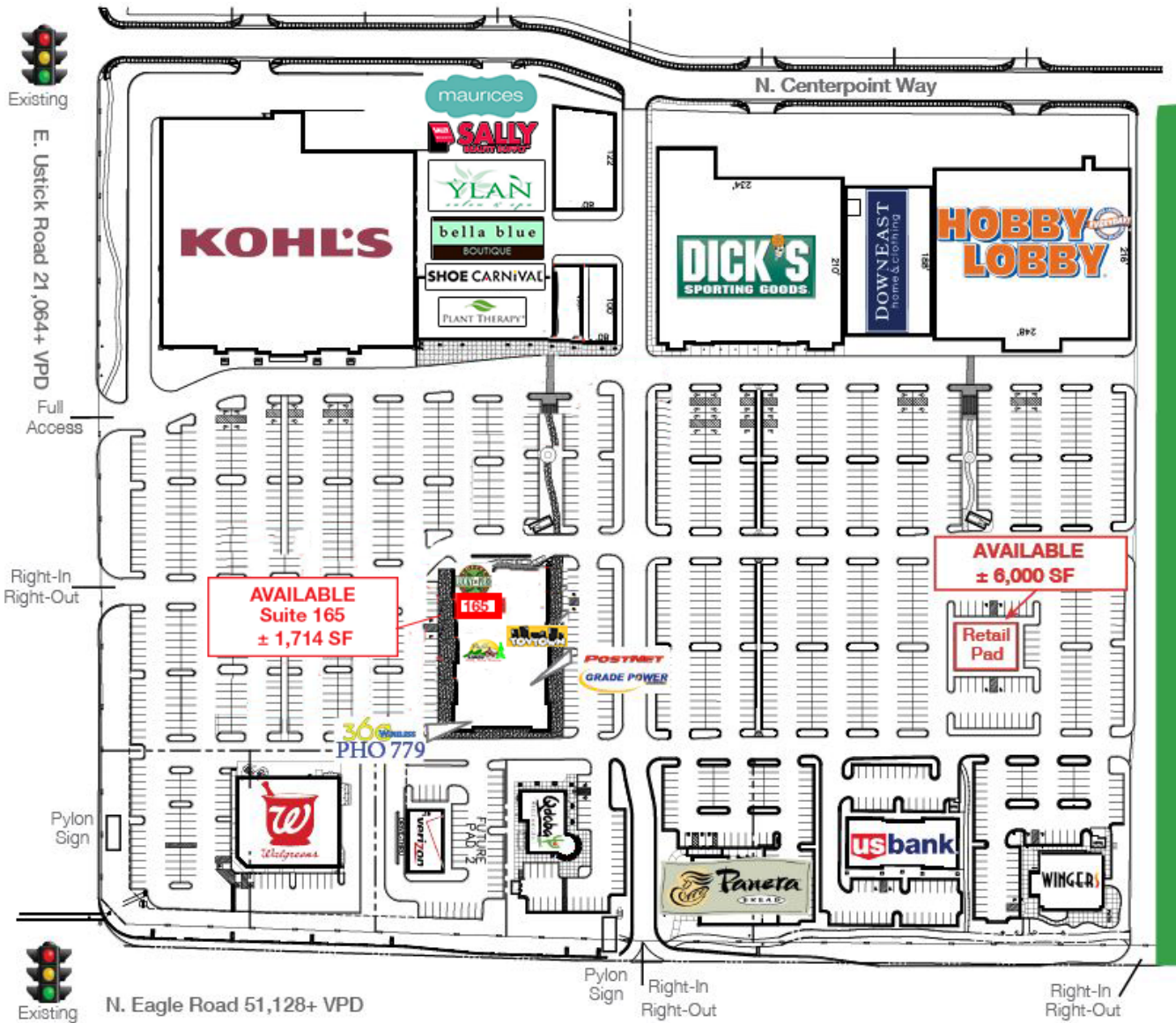
Ben Kneadler  
ben@naiselect.com  
O: 208.229.2020  
D: 208.229.6002

FOR LEASE RETAIL SPACE & PAD



# Centrepoint Marketplace

N. Eagle Road & E. Ustick Road, Eagle, Idaho



5531 N. Glenwood St.  
Boise, Idaho 83714

Mike Erkmann, CCIM  
mike@naiselect.com  
O: 208.229.2020  
D: 208.229.6015

Ben Kneadler  
ben@naiselect.com  
O: 208.229.2020  
D: 208.229.6002