

7535 COVERT ROAD
SYLVANIA TWP, OH 43617

VACANT LAND FOR SALE
0.5831 Acres Available



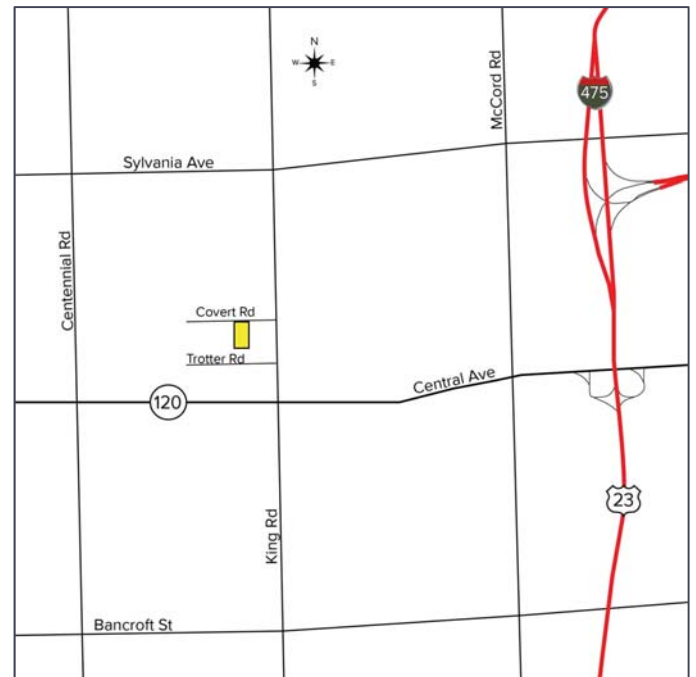
**SIGNATURE
ASSOCIATES**
KNOW SIGNATURE | KNOW RESULTS

FULL-SERVICE COMMERCIAL REAL ESTATE



GENERAL INFORMATION

Price:	\$37,500
Acreage:	0.5831 acres
Dimensions:	80' x 317'
Closest Cross Street:	King Road
County:	Lucas
Zoning:	C-2
Easements:	Of record
Curb Cuts:	One
Topography:	Flat
Survey Available:	No
Environmental Report:	No



For more information, please contact:

JOE FRANCIS
(419) 249 6320
jfrancis@signatureassociates.com

SIGNATURE ASSOCIATES
Four SeaGate, Suite 608
Toledo, Ohio 43604
www.signatureassociates.com

PROPERTY DESCRIPTION

Environmental Report:	No
Drainage:	Ditch
Improvements:	None
Restrictions:	Of record
Sign on Property:	Yes

Adjacent Land

North:	Vacant land
South:	Residential
East:	Residential
West:	Residential

UTILITIES

Electric:	Yes
Gas:	Yes
Water:	Yes
Sanitary Sewer:	No
Storm Sewer:	No

2019 REAL ESTATE TAXES

TD:	78
Parcel Number:	62504
Assessor Number:	30252032
Total Taxes:	\$881.50

Comments:

- Close to Mercy Sylvania campus.
- Commercially zoned.
- Minutes from US-23/I-475.

For more information, please contact:

JOE FRANCIS
(419) 249 6320
jfrancis@signatureassociates.com

SIGNATURE ASSOCIATES
Four SeaGate, Suite 608
Toledo, Ohio 43604
www.signatureassociates.com