



CUSHMAN &
WAKEFIELD

600 CLASS A
OFFICE
SPACE
WASHINGTON
AVAILABLE FOR LEASE



600 Washington Avenue St. Louis, Missouri 63101

- Completely Renovated 376,000 SF Class A Office Property
- Largest Contiguous Block of Class A Space in Downtown St. Louis at 90,000 SF
- Custom Designed Suites from 5,000 up to 90,000 SF
- Over 2,000 Connected Parking Spaces Available, the Largest in the Entire Downtown Market
- 24 Hour On-site Security
- Competitive Lease Rates and Generous Tenant Improvement Allowances Offered
- Fitness Center with Locker and Shower Facilities
- Conference & Training Rooms Available with Kitchen Facilities
- Located in the heart of the Mercantile Exchange District Offering Unbeatable Amenities
- Unique Floorplan Offers the Opportunity for up to 10 Corner Offices per Floor
- Metrolink Access at the Immediate Entrance to the Property
- **5,000 - 90,000 SF**
\$18.75/SF Full Service

Restaurants now open:

Pi Pizzeria

Snarf's Sandwiches

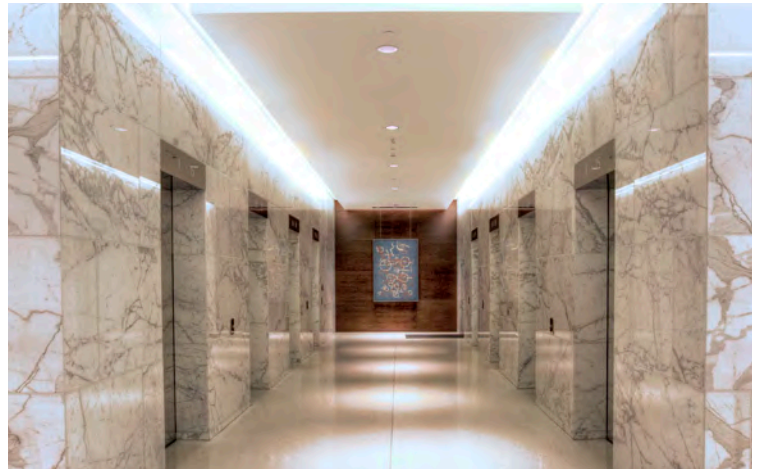
Robust Wine Bar and Café

Porano Pasta

Tazé Mediterranean Street Food

Sugarfire (Opening Soon)

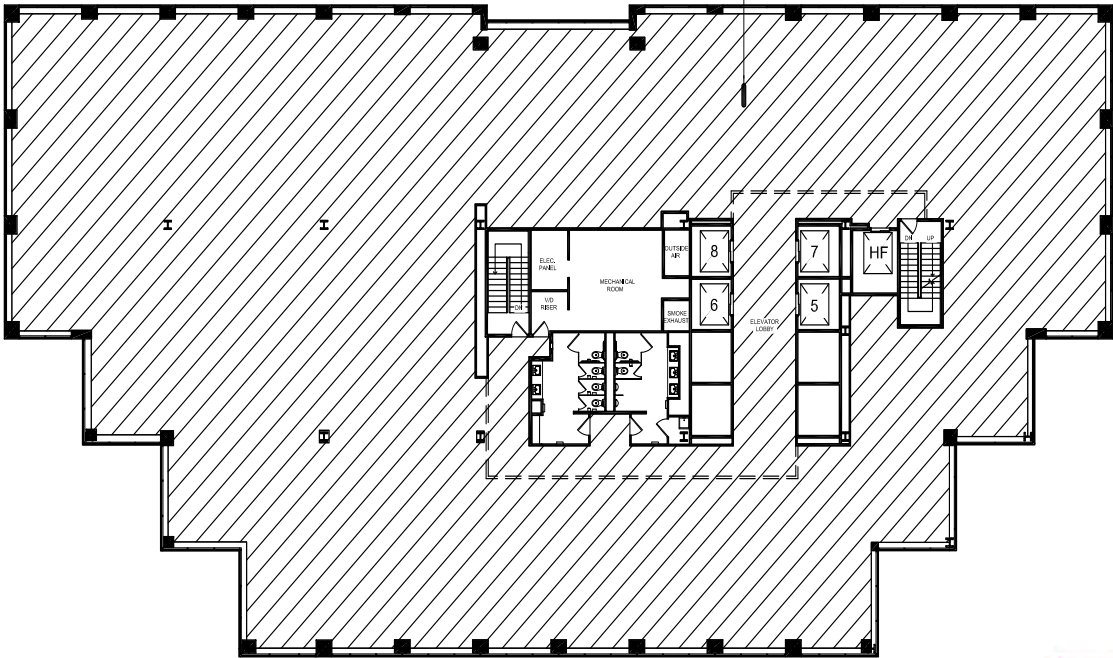
Crazy Bowls & Wraps

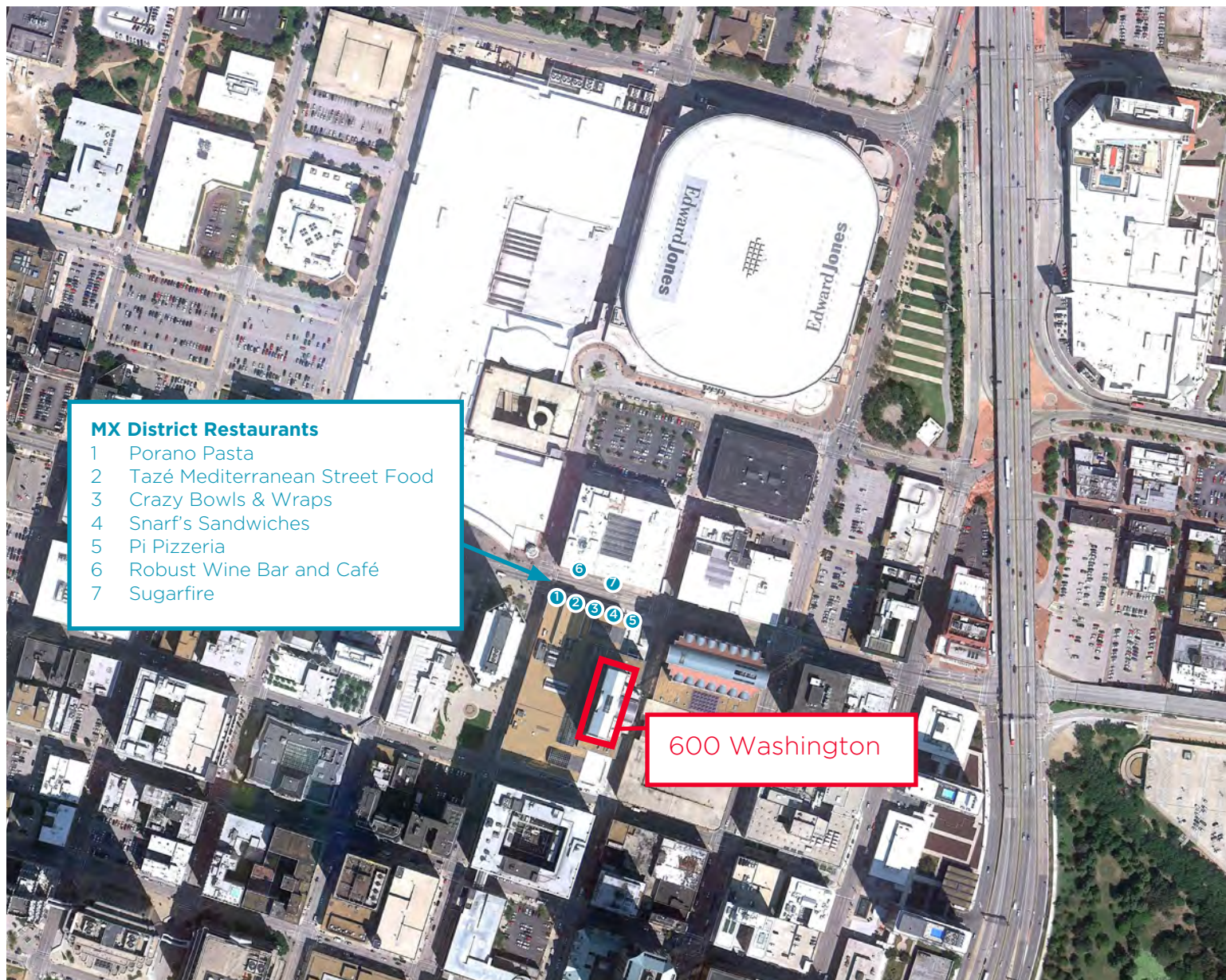




Typical Floor

Suite 1600
Available
18,468 RSF
Expires: TBD





**For More Information,
Please Contact:**

Jim Mosby, CCIM, SIOR
Senior Managing Director
+1 314 746 0316
jim.mosby@cushwake.com

DJ Fuchs
Associate
+1 314 925 2989
dj.fuchs@cushwake.com

7700 Forsyth Boulevard
Suite 1210
St. Louis, Missouri 63105
www.cushmanwakefield.com

