



# For Lease

**14,586 SF**

**600 Meadowlands Parkway  
Secaucus, New Jersey**

## **Building specifications & highlights**

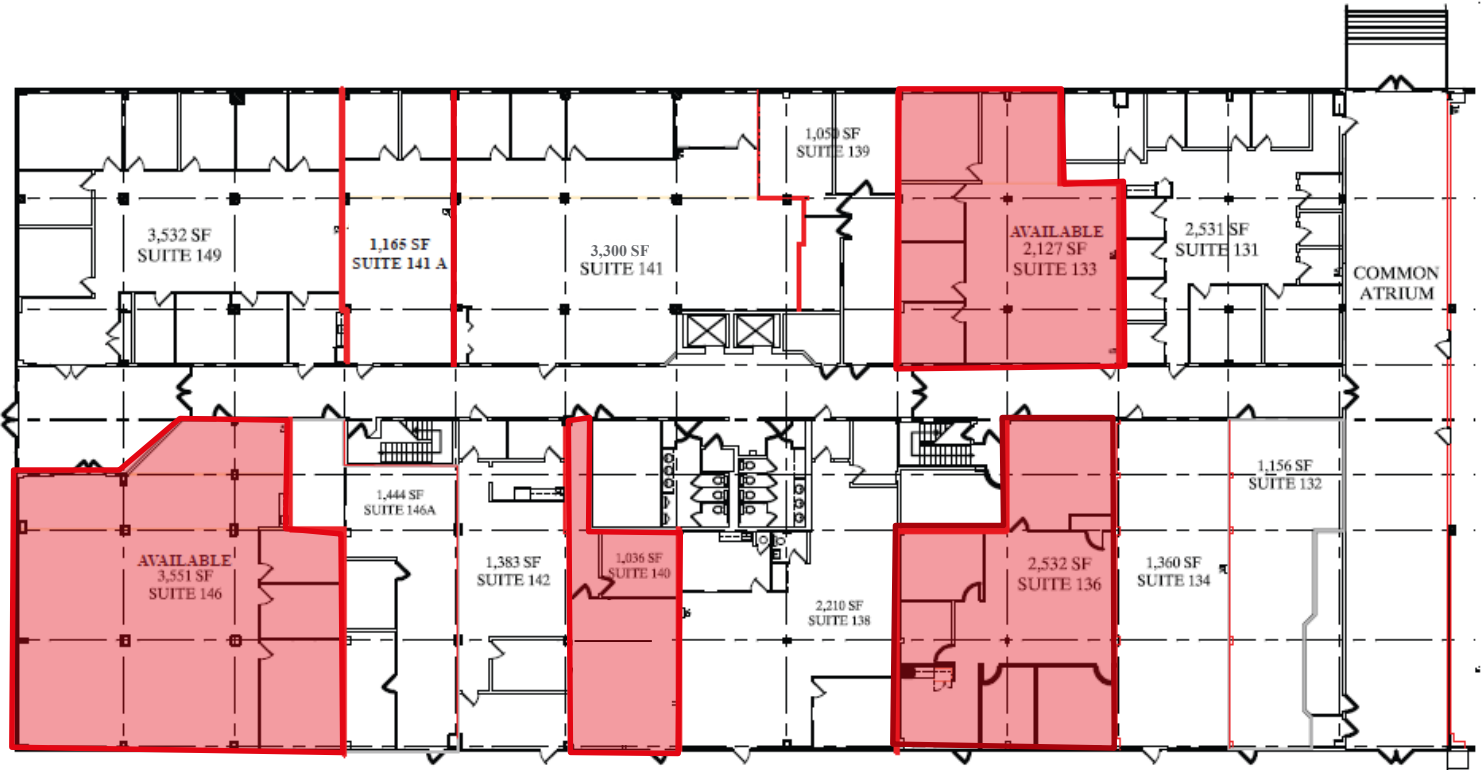
- 143,057 total building size
- Wet sprinkler system
- Common area lounge
- Close to area amenities including Harmon Meadow
- Convenient access to the Lincoln Tunnel to New York City
- NJ transit bus stops located at the building
- 1 mile from Secaucus Junction
- Access to New Jersey Turnpike, Route 3, and I-495

**Harold Imperatore**

+1 201 528 4430

[harold.imperatore@am.jll.com](mailto:harold.imperatore@am.jll.com)

# 1<sup>st</sup> floor



# 2<sup>nd</sup> floor

