

WHITE RIVER CORPORATE PARK

BUILDING B

2302 WEST VALLEY HWY N, AUBURN, WA

AVAILABLE FEBRUARY 2021

53,300 SF TOTAL
DIVISIBLE TO
35,268 SF AND 18,032 SF

STATE ROUTE 167

NEWMARK

THAD MALLORY, SIOR
425.362.1410
THAD.MALLORY@NGKF.COM

TAYLOR HOFF, SIOR
425.362.1388
TAYLOR.HOFF@NGKF.COM

CAM WARREN
425.362.1395
CAM.WARREN@NGKF.COM

BLAKE BENTZ
425.362.1391
BLAKE.BENTZ@NGKF.COM

Image courtesy of Google Earth

AMENITIES/LOCATION MAP

Image courtesy of Google Earth

KENT

AUBURN GOLF COURSE

Tommy Bahama

167

MCKESSON

FedEx

EMERALD DOWNS

White River Corporate Park Bldg B

evo

Propét

COMPETITION SPECIALTIES

Richelleu Hardware

ESTES

West Valley Highway N

WHITE RIVER CORPORATE PARK BUILDING B

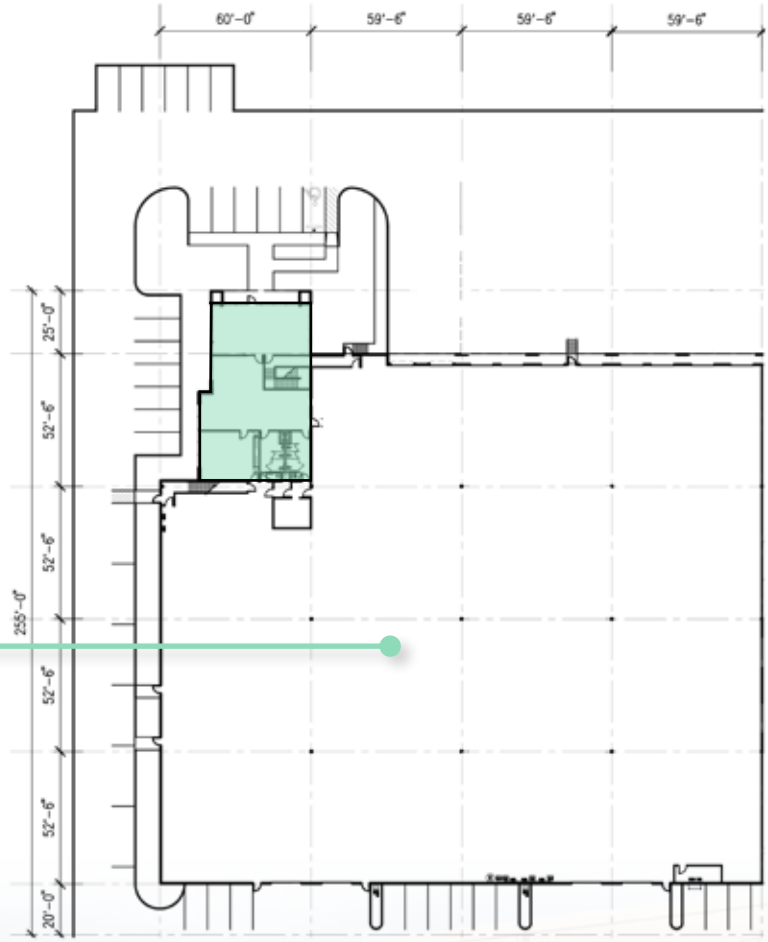
ABOUT THE BUILDING



CLICK HERE TO VIEW VIRTUAL TOUR OF THE FIRST FLOOR!

- **53,300 SF total with 6,655 SF of office**
(3,615 SF 1st floor / 3,040 SF 2nd floor)
- 10 dock-high doors
- 4 grade-level doors (3-14'x10', 1-20'x16')
- 24' clear height
- 800 amps, 480v power
- 2 pit levelers / 5 edge of dock plates
- Recently renovated offices
- Small shower and locker room
- **Divisible Options:**
 - **Suite 100: 35,268 SF with 6,655 SF of office**
6 dock-high doors / 2 grade-level doors
 - **Suite 200: 18,032 SF with 832 SF of new office**
3 dock-high doors / 2 grade-level doors
- High image industrial park
- Excellent freeway access and visibility
- Great distribution or manufacturing space

FLOOR PLAN



NEWMARK

THAD MALLORY, SIOR
 425.362.1410
 THAD.MALLORY@NGKF.COM

TAYLOR HOFF, SIOR
 425.362.1388
 TAYLOR.HOFF@NGKF.COM

CAM WARREN
 425.362.1395
 CAM.WARREN@NGKF.COM

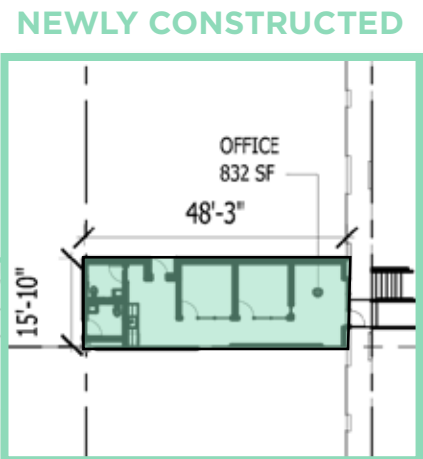
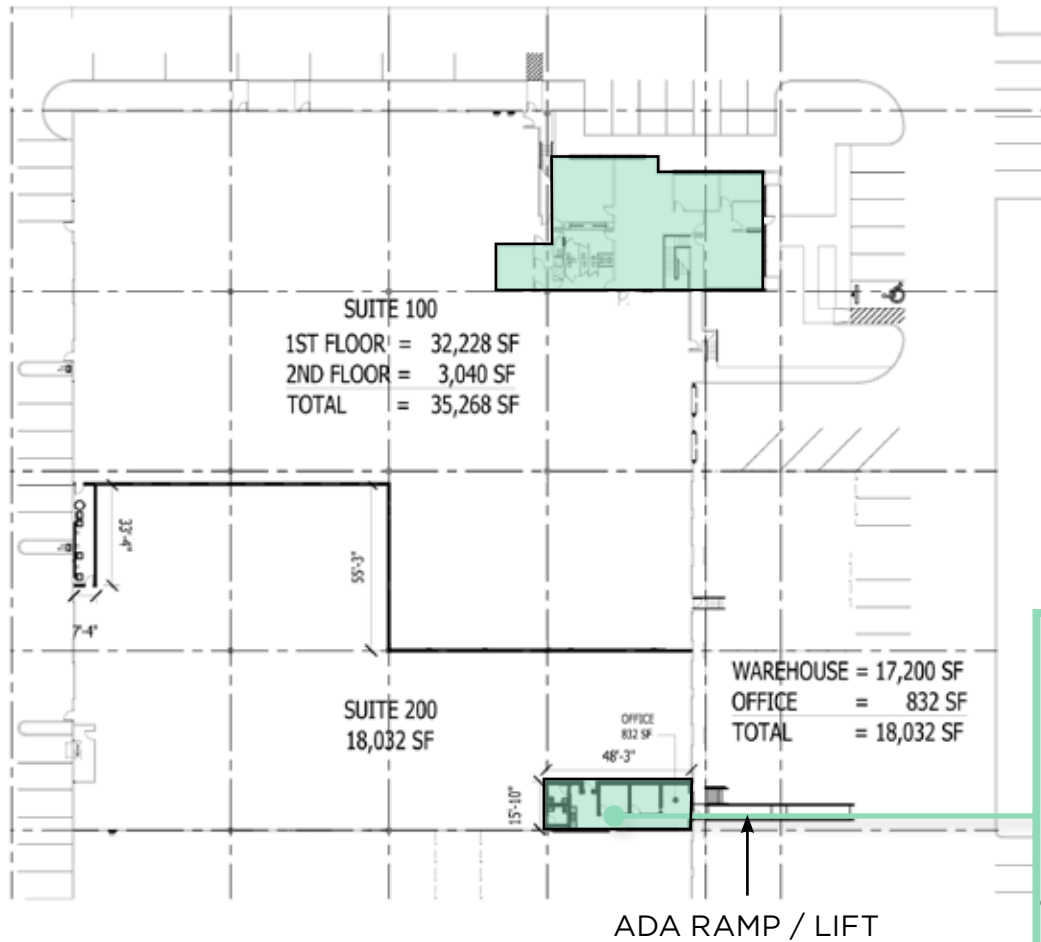
BLAKE BENTZ
 425.362.1391
 BLAKE.BENTZ@NGKF.COM

WHITE RIVER CORPORATE PARK BUILDING B

DIVISIBLE PLAN OPTIONS



WHITE RIVER CORPORATE PARK BUILDING B



NEWMARK

THAD MALLORY, SIOR
 425.362.1410
 THAD.MALLORY@NGKF.COM

TAYLOR HOFF, SIOR
 425.362.1388
 TAYLOR.HOFF@NGKF.COM

CAM WARREN
 425.362.1395
 CAM.WARREN@NGKF.COM

BLAKE BENTZ
 425.362.1391
 BLAKE.BENTZ@NGKF.COM