



16560 Commercial Ave

Baton Rouge, Louisiana 70816

Property Highlights

- Interstate 12 exposure at I-12 and O'Neal interchange
- Build to Suite Opportunity
- 60,000 SF of heavy concrete yard, fenced, lighted, and improved with a high end 1,490 SF office
- Build to Suit: Will add improvements and land to suit Tenant's needs
- Additional Land Available: 1 acre on the south side and 3.5 acres on the east side of subject property
- Includes pole sign with interstate exposure
- Approximately 120,000 total traffic count
- Price subject to improvements



CALL OR EMAIL FOR MORE INFORMATION

For more information

Bill Gremillion

O: 225 297 7482 | C: 225 921 7731
bgremillion@latterblum.com

1700 City Farm Drive
Baton Rouge, LA 70806
225 295 0800 tel
latterblum.com

NO WARRANTY OR REPRESENTATION, EXPRESS OR IMPLIED, IS MADE AS TO THE ACCURACY OF THE INFORMATION CONTAINED HEREIN, AND THE SAME IS SUBMITTED SUBJECT TO ERRORS, OMISSIONS, CHANGE OF PRICE, RENTAL OR OTHER CONDITIONS, PRIOR SALE, LEASE OR FINANCING, OR WITHDRAWAL WITHOUT NOTICE, AND OF ANY SPECIAL LISTING CONDITIONS IMPOSED BY OUR PRINCIPALS NO WARRANTIES OR REPRESENTATIONS ARE MADE AS TO THE CONDITION OF THE PROPERTY OR ANY HAZARDS CONTAINED THEREIN ARE ANY TO BE IMPLIED. LICENSED IN LOUISIANA.

Location Maps
16560 Commercial Ave



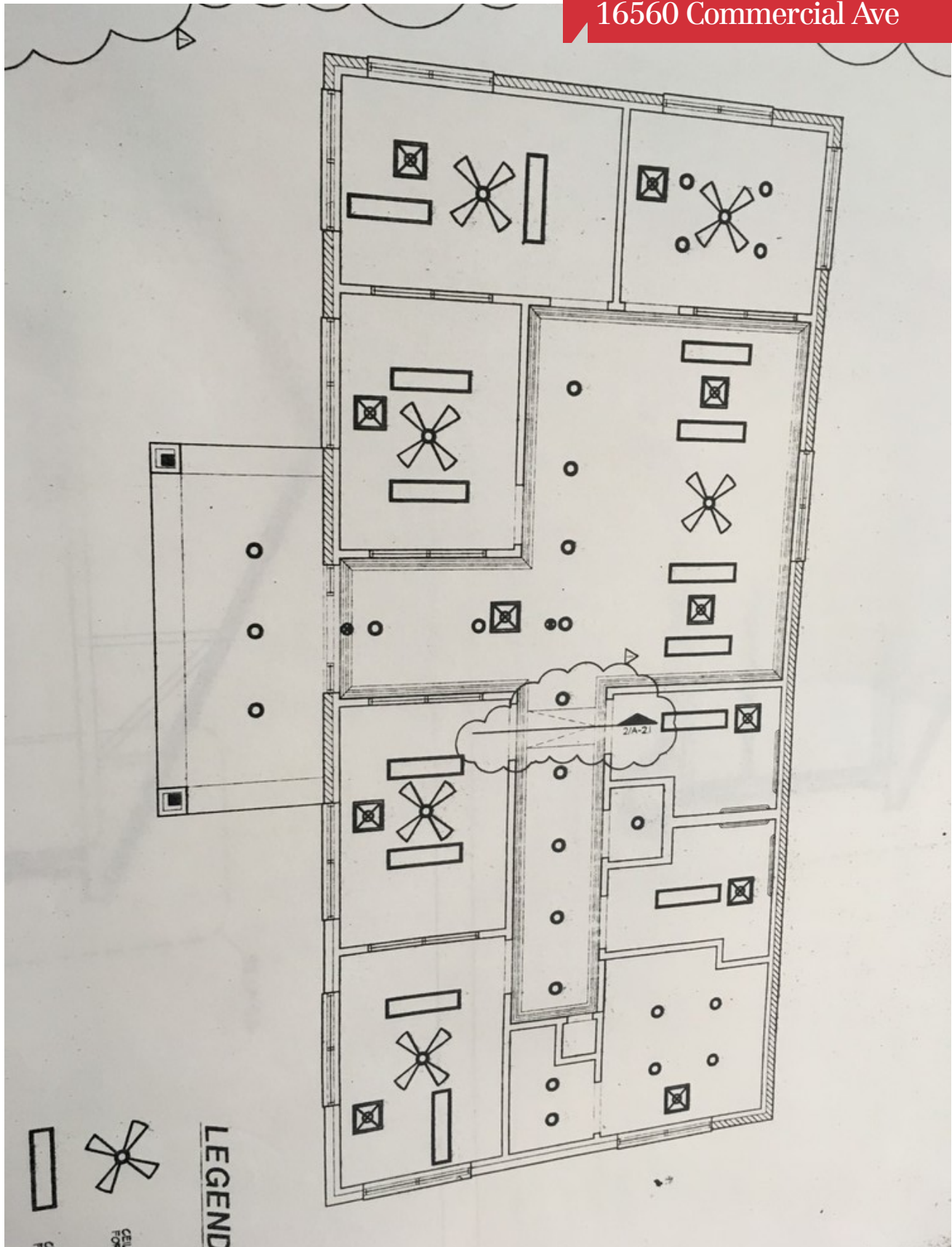
Map data ©2020 Imagery ©2020 , Maxar Technologies, U.S. Geological Survey, USDA Farm Service Agency



Map data ©2020

Additional Photos
16560 Commercial Ave





FOR ILLUSTRATION PURPOSES ONLY, NOT TO SCALE