



FOR LEASE

Property Description

Located in the heart of Lincoln Park the former location of the famous Salt n Pepper Diner is now available for lease. This highly visible corner building with fully operational restaurant space is available for an immediate turnaround. All fixtures and equipment remain on premise. Call For Details!

Property Details

LEASE PRICE: **\$35**

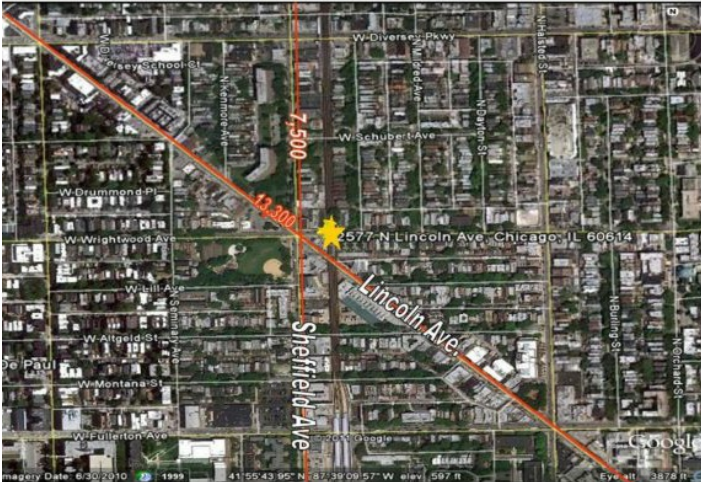
MINIMUM RENTABLE SQ FT: 5,000

MAXIMUM RENTABLE SQ FT: 5,000

LEASE TYPE: Net

ZONING: B3-3

BUILDING SQ FT: 5,000











Dale Strauss 773-736-3600 dale@straussrealty.com

