

Park 184 Building 2

18401 East Valley Highway
Kent, WA

Flex/Showroom Space

9,296 SF total
4,864 SF office

3 grade-level doors (12'x14')

\$0.48 PSF shell, per month
plus NNN
\$0.75 PSF office add-on, NNN

Nice image space on busy East Valley Highway

Located on prominent corner of project

Available now



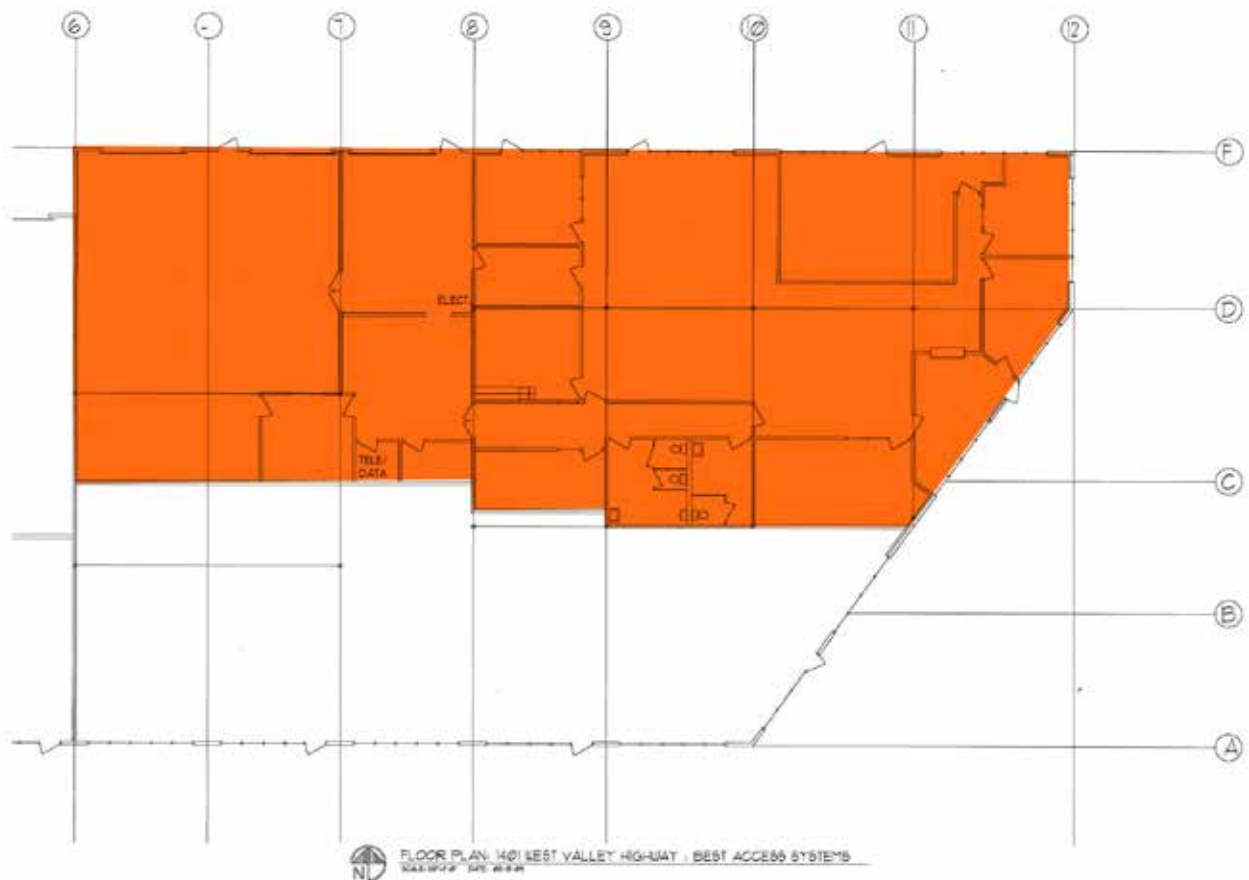
Location



Contact

Peter Wooding
206.248.7301
pwooding@kiddermathews.com

Park 184 - Building 2



Contact

Peter Wooding
206.248.7301
pwooding@kiddermathews.com