

1ST & CEDAR

Virtual Tour Available

S U B L E A S E

2701 FIRST AVENUE | SEATTLE, WA

BRODERICK
• GROUP •



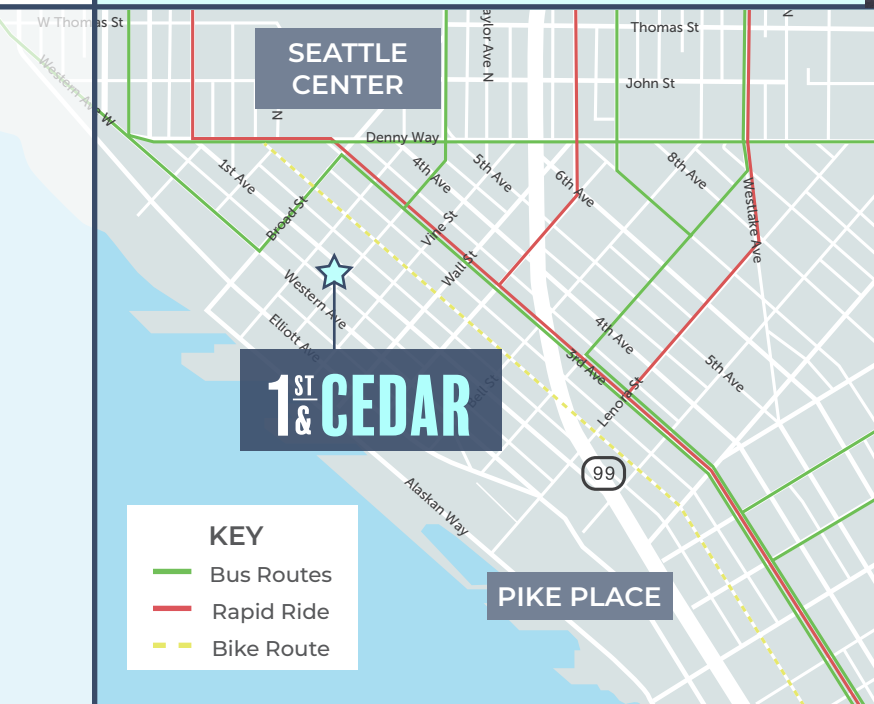
1ST & CEDAR

S U B L E A S E

SUITE 420

2,330 RSF
TERM - THRU JANUARY 2024
ASKING RATE - \$20/RSF, FSG

AVAILABLE WITH
30-60 DAYS' NOTICE



PROPERTY FEATURES

- + Close proximity to retail and transit
- + On-site management
- + Secure lobby

AMENITIES

- + Building conference room
- + Bike storage
- + Secure parking
- + Shower

The information contained herein has been given to us by the owner or sources that we deem reliable. We have no reason to doubt its accuracy, but we do not guarantee it. Prospective tenants should carefully verify all information contained herein.

BRODERICK
• GROUP •

1ST & CEDAR

SUBLEASE



FLOOR PLAN

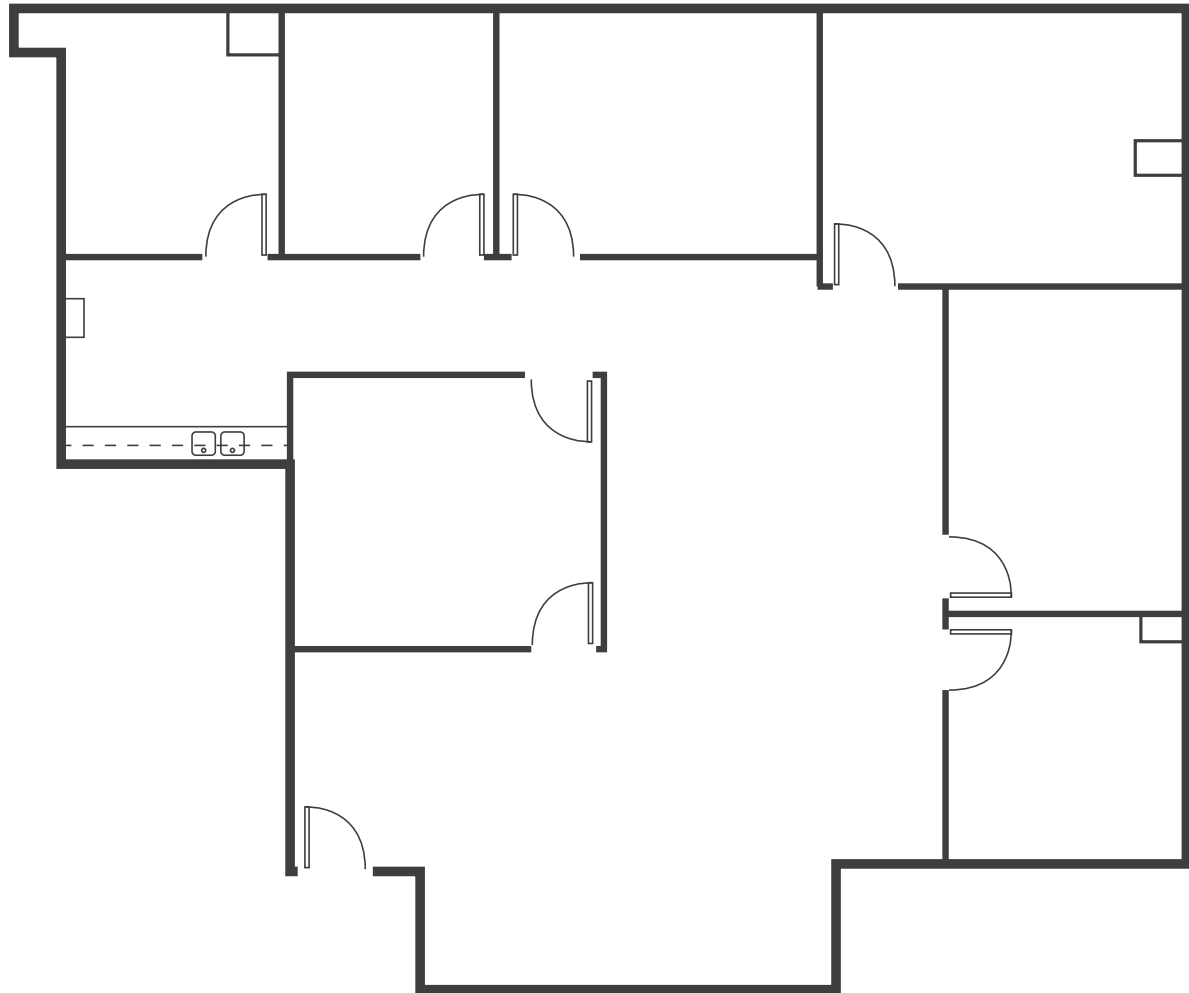
SUITE 420

2,330 RSF

\$20/RSF, FSG

AVAILABLE WITH
30-60 DAYS' NOTICE

 Virtual Tour



BRODERICK
• GROUP •

DAVID GREENWOOD | 206.838.7635 | greenwood@broderickgroup.com