

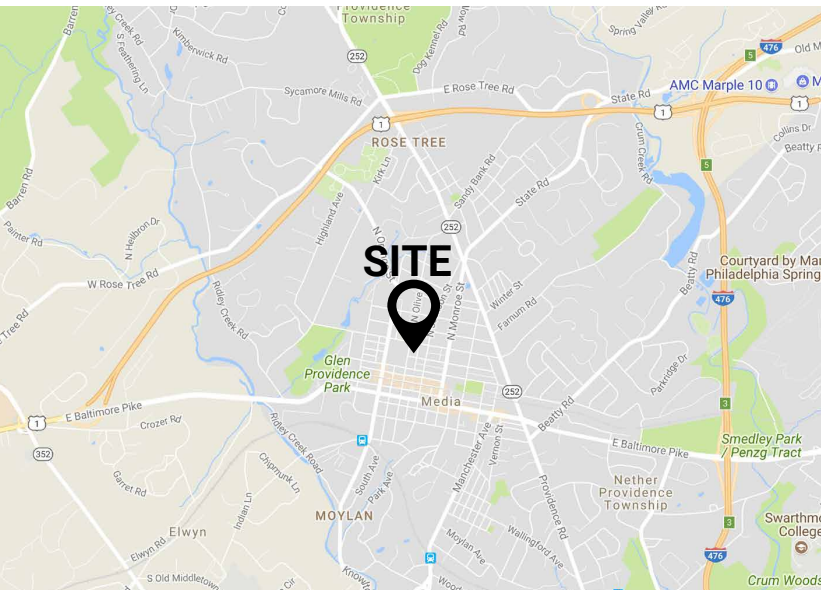
# ± 1,100 SF 1ST FLOOR OFFICE SPACE

25 W 2ND STREET | MEDIA, PA 19063

**FOR LEASE:**  
**\$2,200 PER MONTH**

## PROPERTY FEATURES

- ✓ ± 1,100 SF 1st Floor Office Space For Lease
- ✓ Private offices, reception areas and shared conference room
- ✓ Conveniently located near the Media Courthouse
- ✓ On-site, and on-street parking
- ✓ Easy access to the Blue Route, I-95 and downtown Media
- ✓ \$2,200 Per Month / Full Service Lease



## CONTACT US

**STEVE DIBATTISTA**

Phone: 610.359.1100

Cell: 610.368.2801

Email: [sdibattista@zmcre.com](mailto:sdibattista@zmcre.com)

**JEFFREY B. DOWD**

Phone: 610.359.1100

Cell: 610.842.4383

Email: [jdowd@zmcre.com](mailto:jdowd@zmcre.com)

1306 Wilmington Pike, Suite A-2

West Chester, PA 19382

610.359.1100

[www.zmcre.com](http://www.zmcre.com)

  
**ZOMMICK MCMAHON**  
COMMERCIAL REAL ESTATE



# MEDIA PROPERTY PHOTO - 25 W 2ND STREET



  
**ZOMMICK MCMAHON**  
COMMERCIAL REAL ESTATE

## CONTACT US

**STEVE DIBATTISTA**

Phone: 610.359.1100

Cell: 610.368.2801

Email: [sdibattista@zmcre.com](mailto:sdibattista@zmcre.com)

**JEFFREY B. DOWD**

Phone: 610.359.1100

Cell: 610.842.4383

Email: [jdowd@zmcre.com](mailto:jdowd@zmcre.com)

1306 Wilmington Pike, Suite A-2

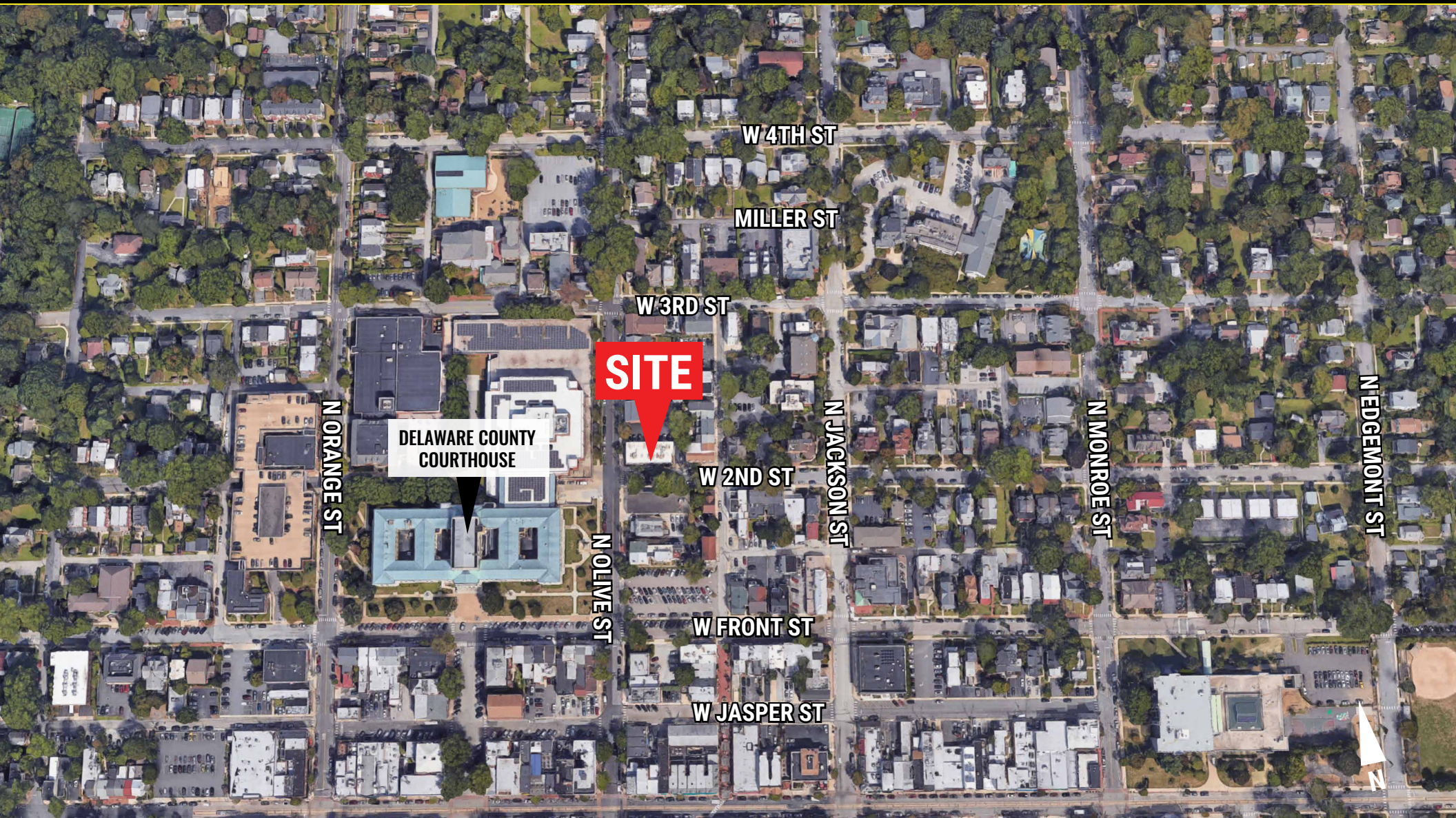
West Chester, PA 19382

610.359.1100

[www.zmcre.com](http://www.zmcre.com)



# MEDIA SITE LOCATION AERIAL: 25 W 2ND STREET



## CONTACT US

**STEVE DIBATTISTA**

Phone: 610.359.1100

Cell: 610.368.2801

Email: [sdibattista@zmcre.com](mailto:sdibattista@zmcre.com)

**JEFFREY B. DOWD**

Phone: 610.359.1100

Cell: 610.842.4383

Email: [jdowd@zmcre.com](mailto:jdowd@zmcre.com)

1306 Wilmington Pike, Suite A-2

West Chester, PA 19382

610.359.1100

[www.zmcre.com](http://www.zmcre.com)



# ABOUT ZOMMICK McMAHON COMMERCIAL REAL ESTATE

Zommick McMahon Commercial Real Estate, Inc. has been a Metro Philadelphia Area staple since its inception in 1949. The Company was founded by Joseph Zommick, and continues today with Ryan McMahon and his highly experienced staff, whom are all results-oriented professionals.

## SOME OF OUR SATISFIED CLIENTS:



## CONTACT US

**STEVE DIBATTISTA**

Phone: 610.359.1100

Cell: 610.368.2801

Email: [sdibattista@zmcre.com](mailto:sdibattista@zmcre.com)

**JEFFREY B. DOWD**

Phone: 610.359.1100

Cell: 610.842.4383

Email: [jdowd@zmcre.com](mailto:jdowd@zmcre.com)

1306 Wilmington Pike, Suite A-2

West Chester, PA 19382

610.359.1100

[www.zmcre.com](http://www.zmcre.com)