

15203 - 15211 8th Ave S | Burien, WA

FOR LEASE

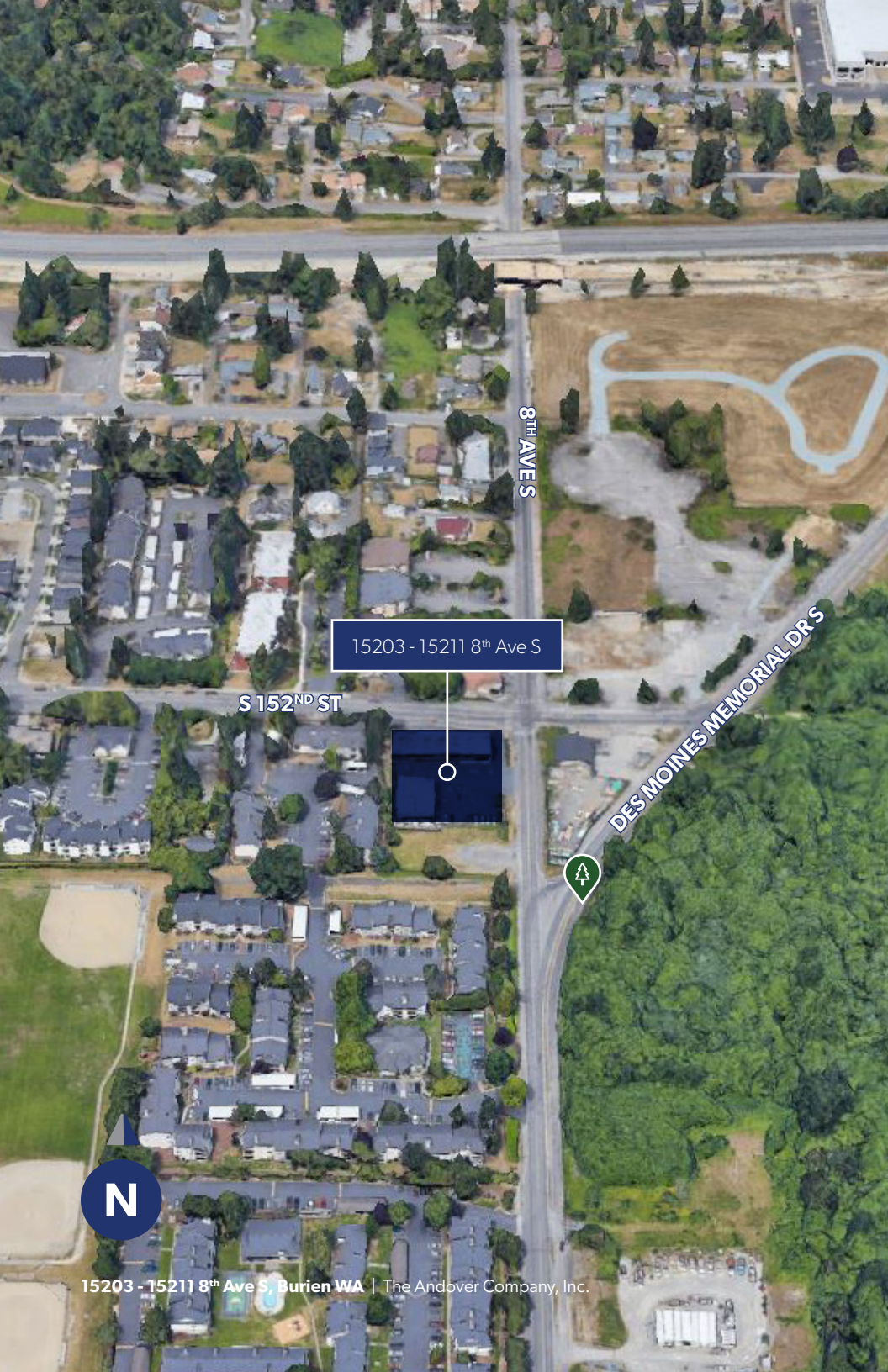
**1,200 SF - 3,400 SF
of Medical/Dental
Office Space**



 THE ANDOVER
COMPANY, INC.
CORFAC INTERNATIONAL

ARNE SVENDSEN
(206) 336-5331
asvensen@andoverco.com

RICHARD RAIFORD
(206) 357-5486
rreiford@andoverco.com



PROPERTY HIGHLIGHTS



MEDICAL/DENTAL OFFICE W/ EXAM ROOMS



OTHER OFFICE USES SUCH AS SALON, SPA AND ESTHETICIAN OFFICE



NEARBY MEDICAL CENTERS INCLUDE: ST. ANNE HOSP., FRANCISCAN HEALTH & KAISER PERMANENTE



W/S/G INCLUDED IN NNN



FREE ON-SITE PARKING



CONVENIENT TO ALL FREEWAYS



CLOSE TO SEATAC AIRPORT

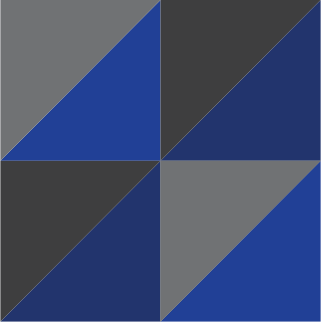


CLOSE TO TUKWILA STATION COMMUTER RAIL



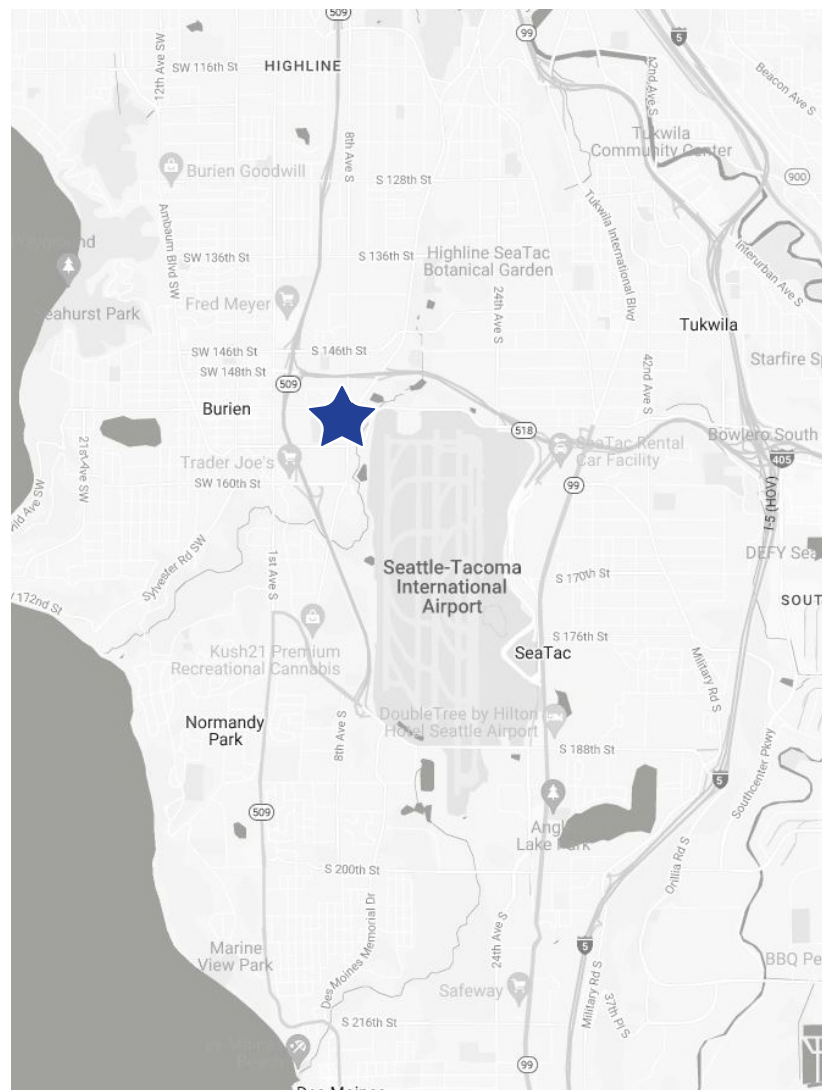
TOTAL BUILDING SIZE: 14,768 SF

N



15203 - 15211

8th Avenue South
Burien, WA



15203 - 15211 8th Ave S, Burien WA | The Andover Company, Inc.



AVAILABLE SPACES

1,200 SF - 3,400 SF

SUITE	TOTAL SF	BASE RENT	EST. NNN'S	TOTAL RENT
15211	2,200	\$3,300	\$557	\$3,857
15209	1,200	\$1,800	\$337	\$2,137
15209 + 15211	3,400	\$5,100	\$894	\$5,994

ARNE SVENDSEN
(206) 947-2885
asvensen@andoverco.com

RICHARD RAIFORD
(206) 357-5486
rraiford@andoverco.com

UNIT 15209

AVAILABLE: NOW

LEASE TYPE: NNN

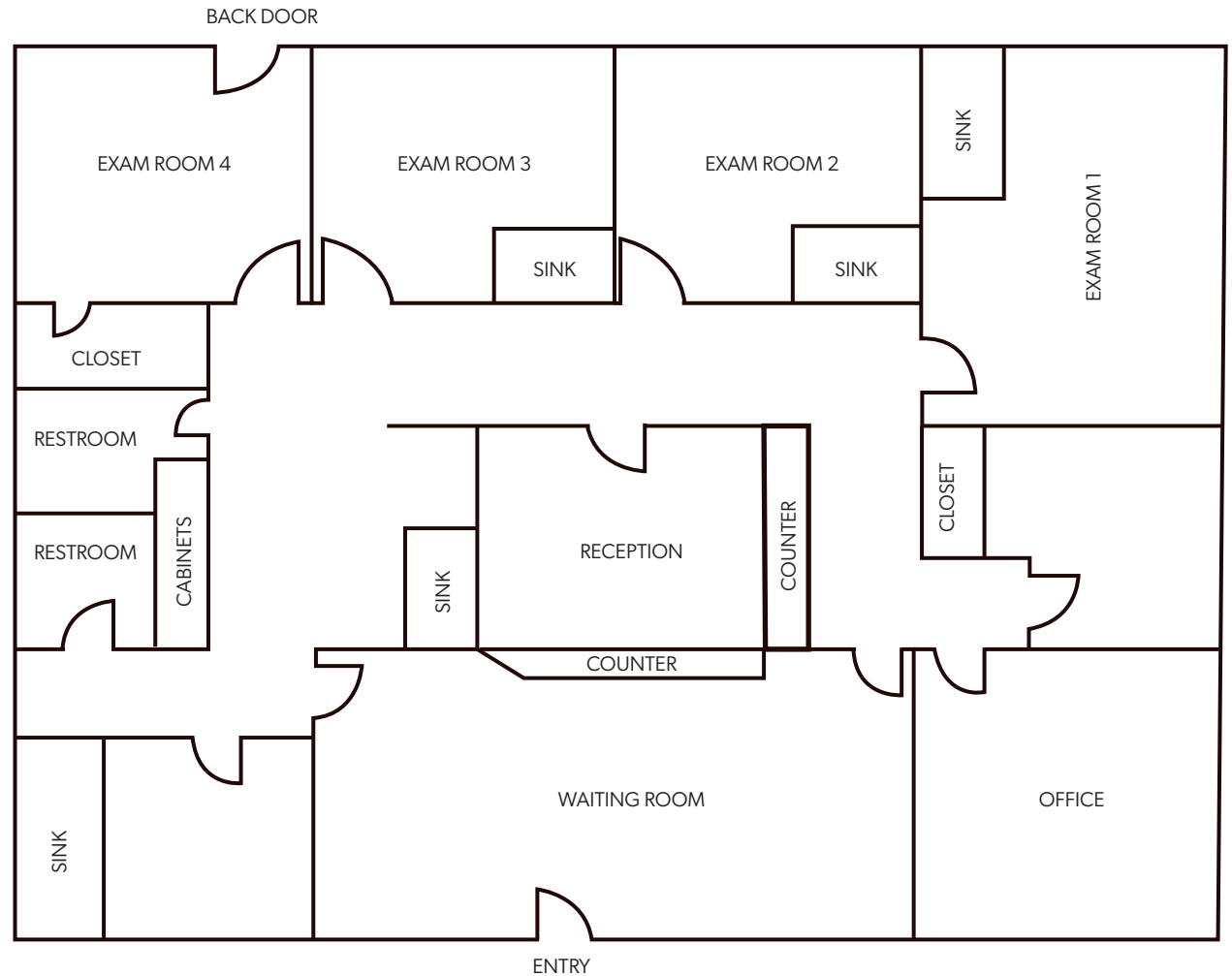
ELECTRICITY: PAID BY TENANT

SPACE AVAILABLE: 1,200 SF

TOTAL BLDG SIZE: 14,768 SF

ARNE SVENDSEN
(206) 947-2885
asvensen@andoverco.com

RICHARD RAIFORD
(206) 357-5486
rraiford@andoverco.com



UNIT 15211

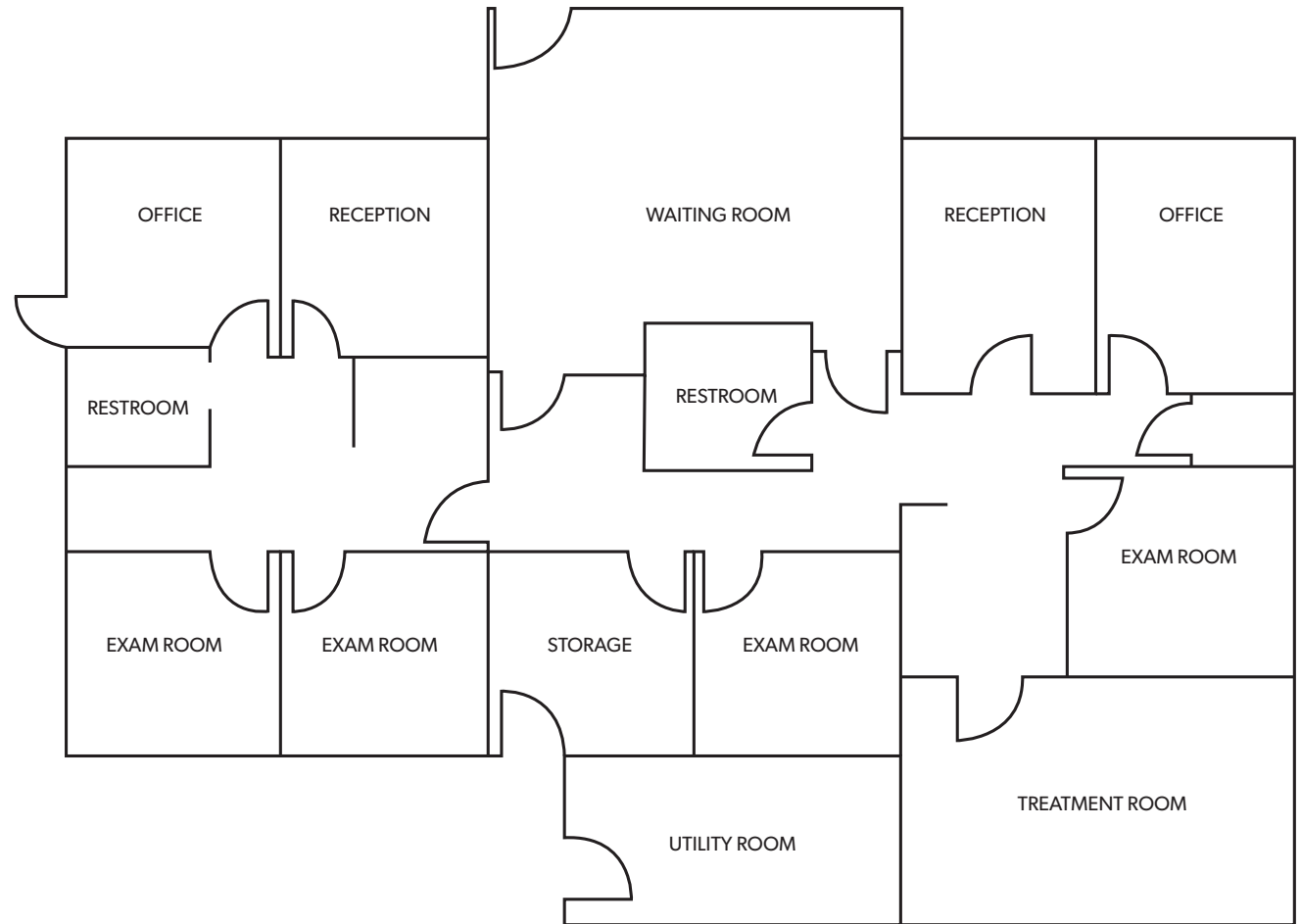
AVAILABLE: NOW

LEASE TYPE: NNN

ELECTRICITY: PAID BY TENANT

SPACE AVAILABLE: 2,200 SF

TOTAL BLDG SIZE: 14,768 SF



ARNE SVENDSEN
(206) 947-2885
asvensen@andoverco.com

RICHARD RAIFORD
(206) 357-5486
rraiford@andoverco.com



