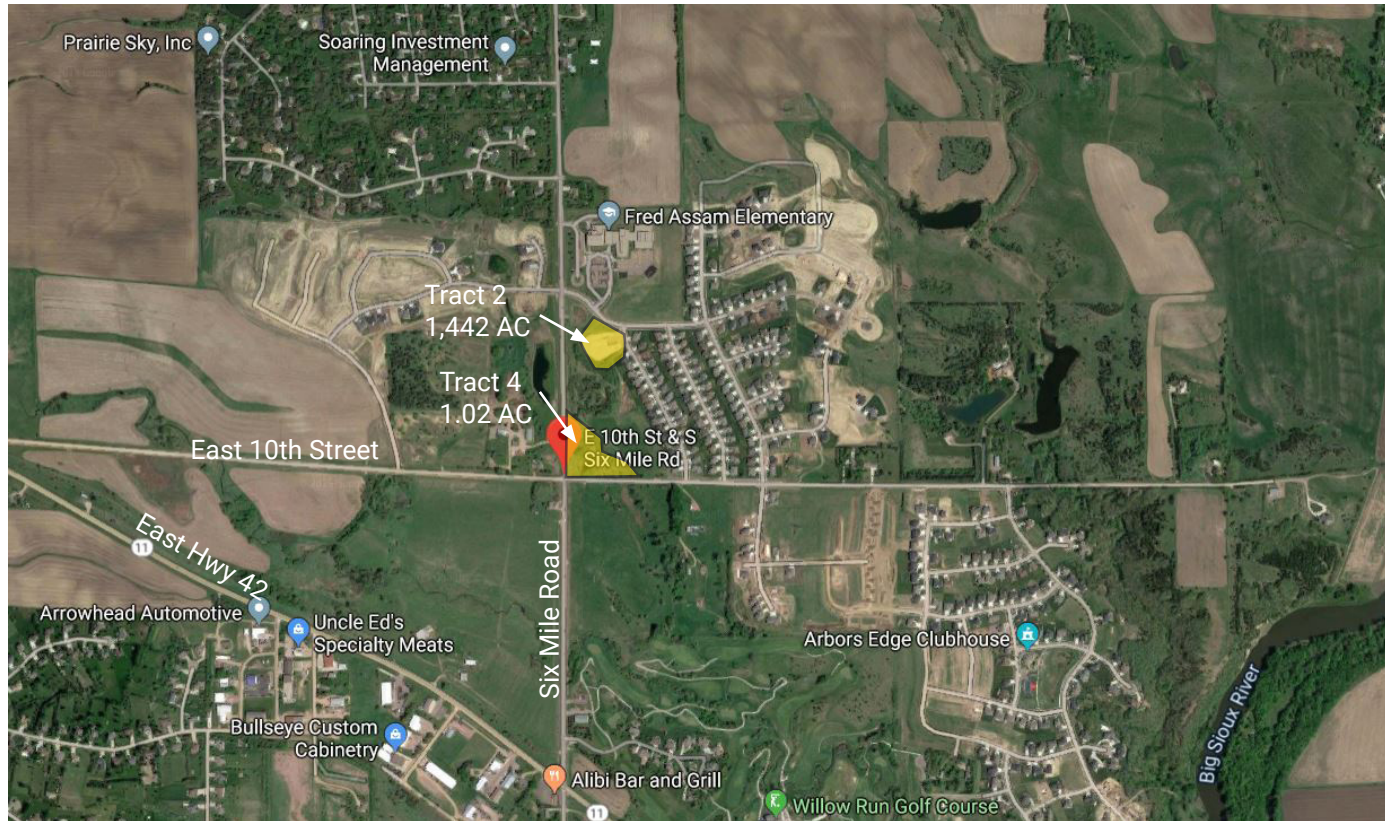


# LAND FOR SALE: WILLOW RIDGE OFFICE LAND

## SITE



**Six Mile Road & East 10th Street**  
**Sioux Falls, SD 57103**

### AVAILABLE:

Tract 2: 1.442 Acres  
Tract 4: 1.02 Acres  
2.462 Acres  
(107,245 +/-SF)

**PRICE:** \$5.00 PSF

**ZONING:** Office

Owner is a licensed broker



**For more information,  
please contact:**

**Mike Van Buskirk**

**p:** 605.361.8211

**c:** 605.366.0936

**e:** Mike@VBCLink.com

## PROPERTY INFORMATION

- Willow Ridge - situated on the rapidly expanding east side!
- Ample space to accommodate most plans.
- Fantastic area for a daycare, due to the proximity of Fred Assam Elementary School.
- For Sale or Build to Suit options.

REAL ESTATE DEVELOPMENT | BROKERAGE | INVESTMENT  
MANAGEMENT | COMMERCIAL CONSTRUCTION | ENGINEERING | ARCHITECTURE

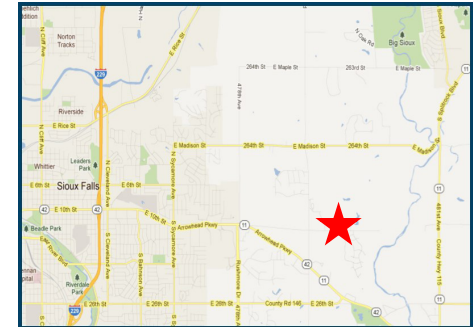
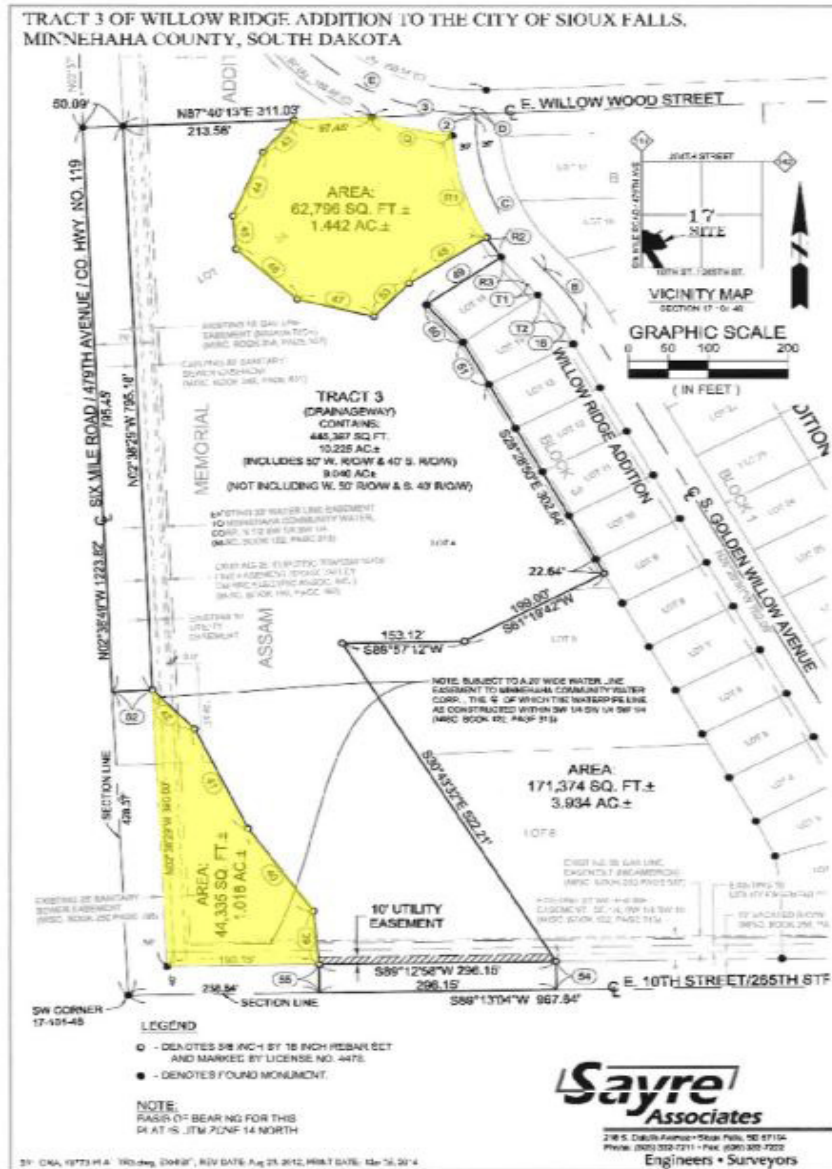
2571 S Westlake Dr, Ste 100, Sioux Falls, SD 57106 | **o:** 605.361.8211 | **f:** 605.361.8052 | **w:** VBCLink.com

**VanBuskirk**  
COMPANIES

This information has been secured from sources we believe to be reliable, but we make no representation or warranties, expressed or implied, as to the accuracy of the information. All references to age, square footage, income, and expenses are approximate. Buyers or Lessors should conduct their own independent investigations and rely only on those results.

# LAND FOR SALE: WILLOW RIDGE OFFICE LAND

Six Mile Road & East 10th  
Street  
Sioux Falls, SD 57103



For more information,  
please contact:

Mike Van Buskirk

p: 605.361.8211

c: 605.366.0936

e: Mike@VBCLink.com

**VanBuskirk**  
COMPANIES

This information has been secured from sources we believe to be reliable, but we make no representation or warranties, expressed or implied, as to the accuracy of the information. All references to age, square footage, income, and expenses are approximate. Buyers or Lessors should conduct their own independent investigations and rely only on those results.

REAL ESTATE DEVELOPMENT | BROKERAGE | INVESTMENT  
MANAGEMENT | COMMERCIAL CONSTRUCTION | ENGINEERING | ARCHITECTURE

2571 S Westlake Dr, Ste 100, Sioux Falls, SD 57106 | o: 605.361.8211 | f: 605.361.8052 | w: VBCLink.com