

7320 E Butherus Drive

Scottsdale, Arizona 85260

OFFICE FOR LEASE

±1,150 - 1,715 sf

Sky Peak Plaza

FANTASTIC BELOW-MARKET RATE!
\$18.50/sf/year Full Service*

*Includes electric (normal business hours) and janitorial 5x per week

AVAILABILITY

FIRST FLOOR

±SF	Suite #
1,150	106
1,304	108
1,715	104

Renovations

Newly-painted common area walls and metal trim | Common area new LED Lighting | Newly carpeted 2nd floor | New plants throughout!

**IDEAL
SCOTTSDALE AIRPARK
LOCATION!**

HIGHLIGHTS

- Two-story skylight atrium lobby with open balconies. Central elevator and three stairways
- Freshly renovated suites with new carpet and paint!
- Walk next door to Scottsdale Quarter. Minutes from Kierland Commons and the Promenade; North Scottsdale's finest dining, shopping, and hospitality destinations
- Parking: Ratio 3.87:1,000. 35 covered + 94 common spaces, including four (4) handicap



Randy Shell
Designated Broker
C 480 694 4100

randy@shellcommercial.com



John Quatrini
Associate Broker
C 602 859 0506

john@shellcommercial.com



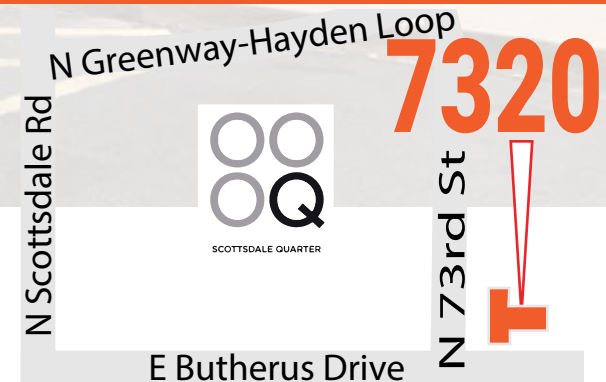
Suzanne Enright
Senior Associate
C 602 471 2981

suzanne@shellcommercial.com



Jeff Hambro
Real Estate Associate
C 480 540 8996

jeff@shellcommercial.com



480 443 3992

16410 N 91st St | Ste 112 | Scottsdale, AZ 85260

shellcommercial.com



The above is subject to prior sales and leasing. This information has been secured from sources we believe to be reliable, but we make no representation or warranties, expressed or implied as to the accuracy of this information.

7320 E Butherus Drive | Scottsdale, Arizona 85260



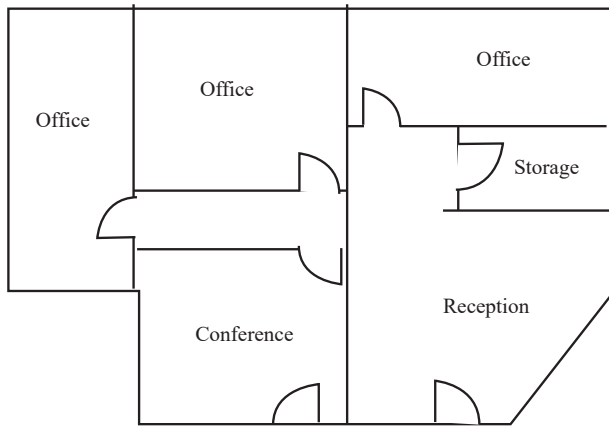
Two-story Class "B" Office Building with gorgeous landscaping, 4:1,000 parking ratio, covered parking available!



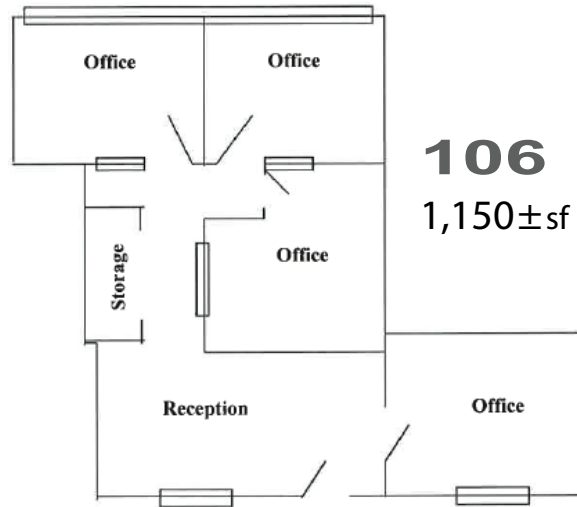
The above is subject to prior sales and leasing. This information has been secured from sources we believe to be reliable, but we make no representation or warranties, expressed or implied as to the accuracy of this information.

FLOOR PLANS | FIRST FLOOR

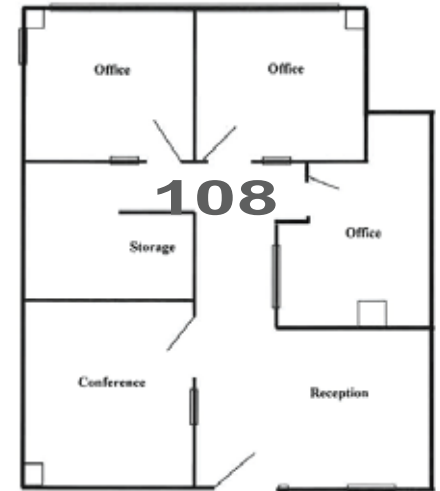
7320 E Butherus Drive | Scottsdale, Arizona 85260



104
1,715±sf



106
1,150±sf



108
1,304±sf

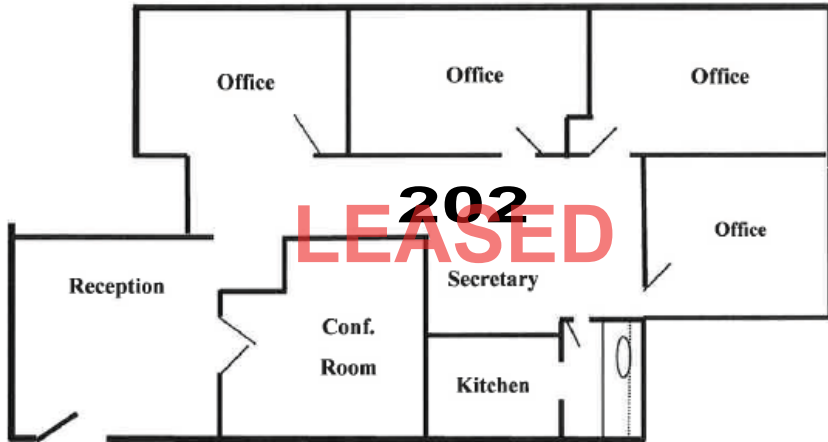
NOT TO SCALE

All information furnished regarding property for sale, rental or financing is from sources deemed reliable, but no warranty or representation is made to the accuracy thereof and same is submitted to errors, omissions, change of price, rental or other conditions, prior to sale, lease or financing or withdrawal without notice. No liability of any kind is to be imposed on the broker herein. This information has been secured from sources deemed reliable, however, we make no warranties as to its accuracy.

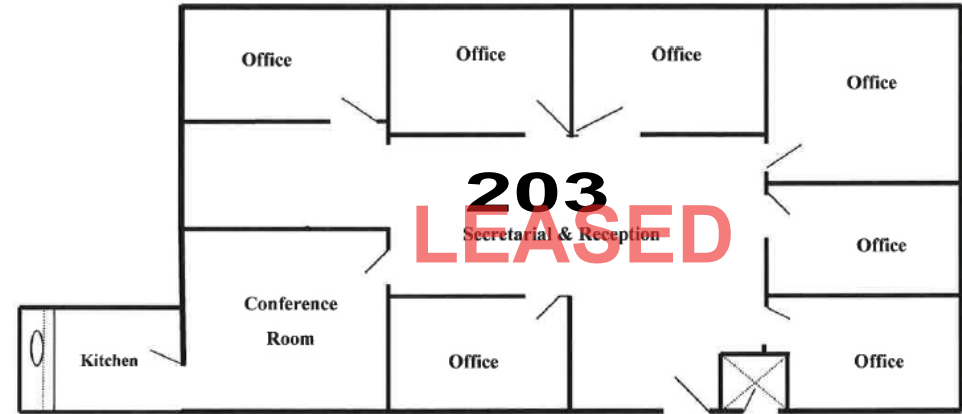
FLOOR PLANS | SECOND FLOOR

7320 E Butherus Drive | Scottsdale, Arizona 85260

2,952 ±sf



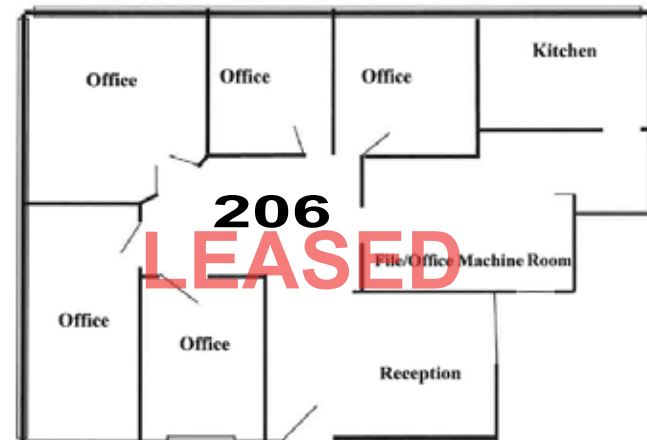
3,304 ±sf



1,710 ±sf



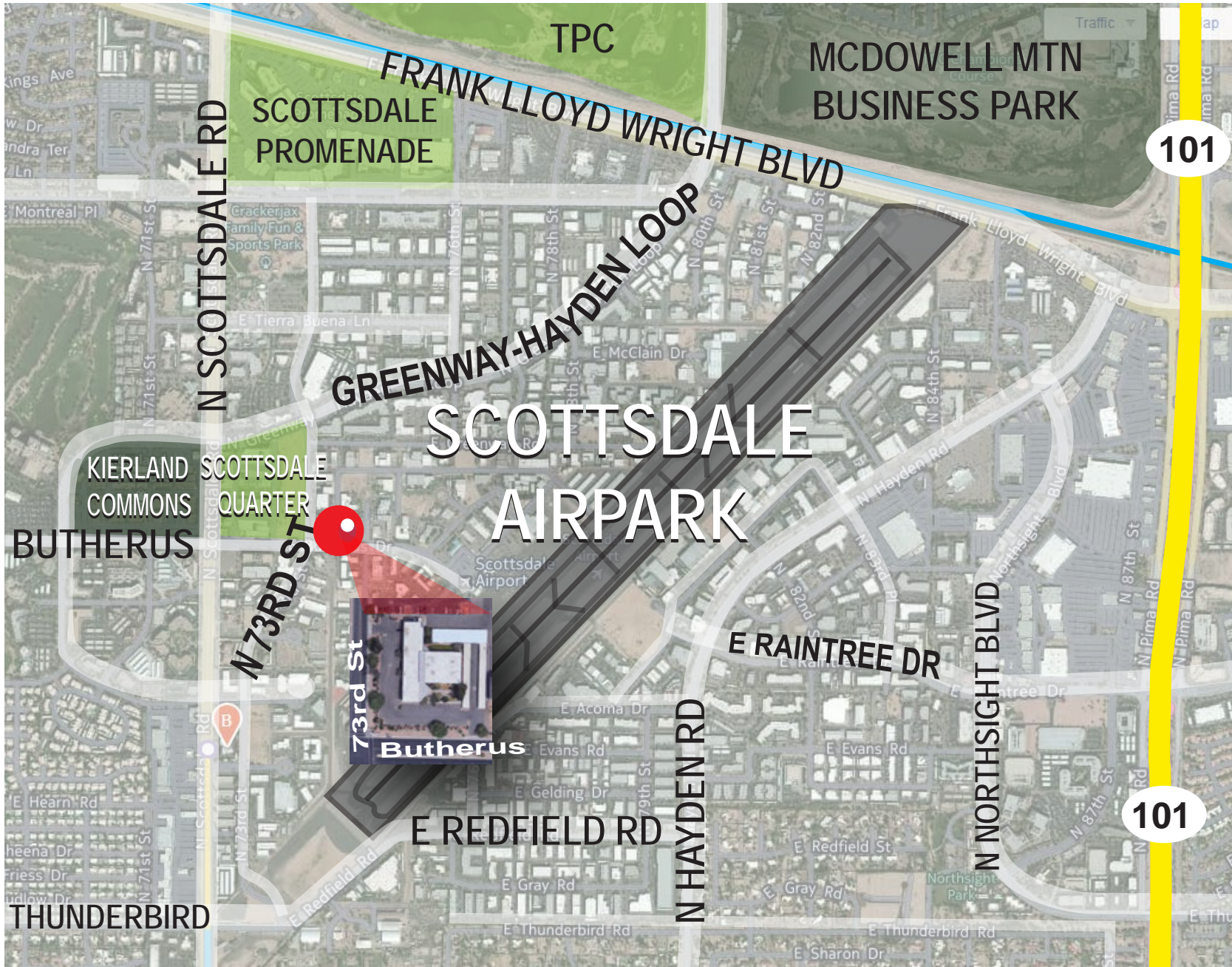
2,829 ±sf



NOT TO SCALE

All information furnished regarding property for sale, rental or financing is from sources deemed reliable, but no warranty or representation is made to the accuracy thereof and same is submitted to errors, omissions, change of price, rental or other conditions, prior to sale, lease or financing or withdrawal without notice. No liability of any kind is to be imposed on the broker herein. This information has been secured from sources deemed reliable, however, we make no warranties as to its accuracy.

7320 E Butherus Drive | Scottsdale, Arizona 85260



The above is subject to prior sales and leasing. This information has been secured from sources we believe to be reliable, but we make no representation or warranties, expressed or implied as to the accuracy of this information.