

FOR LEASE

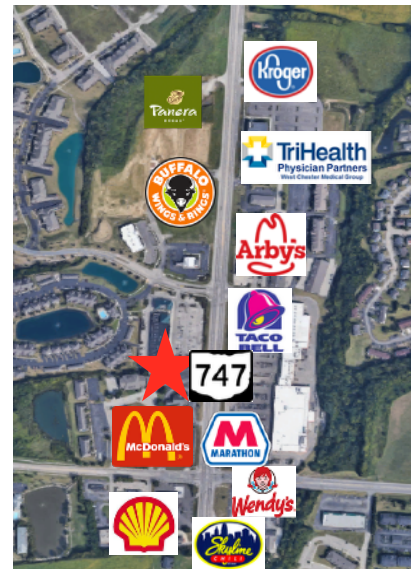
8200 Beckett Park Drive

West Chester, OH 45069



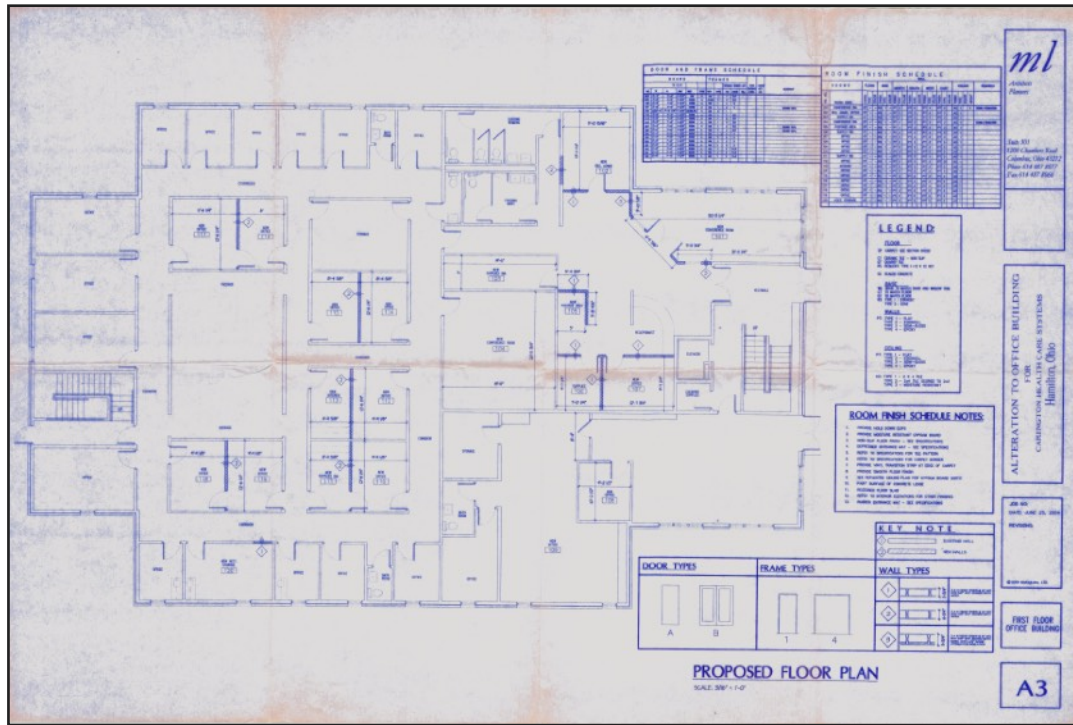
Property Highlights

- Class B office at flex building rates!
- 9,298 SF office space on 1st floor
- Private offices and open space
- High visibility on SR 747
- 60+ parking stalls
- Covered pull through
- Convenient to I-75, I-275 and SR 129
- Asking rates: \$7.50 NNN ****NEW RATE****
(\$5.50 OpEx plus pro rata share of utilities)



North Ridge Realty Group
5430 West Chester Road | West Chester, OH 45069 | 513.860.5050

John Stretch | c: 513.623.6505 | john@nrrg.com
Susan Stretch | c: 513.315.8522 | susan@nrrg.com



1st floor- 9,298 SF

Property Details

Location	West Chester, OH
Building Type	Multi-tenant office
Year Built	1993
Parking	60+ stalls
Signage	Pylon available
Occupancy	Immediate
Tenant Finish	Professional office
Utilities	Pro-rata share
Total Building	20,000+ SF
Available SF	9,298 SF on 1st floor
Pass Through Rate	\$5.50 PSF
Lease Rate	\$7.50 PSF NNN

*The assurance of expertise.
The reputation for results.*

www.nrrg.com



Disclaimer: The Realtor involved in selling the premises is relying on all information provided herein or supplied by owner or owner's sources in connection with the Real Estate. We cannot guarantee this information.