

**1780 M-37
New Construction**



SCHMIDT REALTORS



NEW CONSTRUCTION ON M-37 FOR SALE



Dan Stiebel, CCIM

Cell: (231) 633-0432

Office: (231) 929-2300

dan@realestatetc.com

Coldwell Banker Commercial Schmidt Realtors

522 E Front Street, Traverse City, MI 49686

WWW.REALESTATETC.COM

1780 M-37

New Construction



SCHMIDT REALTORS

THE PROPERTY

1780 M-37
Traverse City, MI 49685

0.93 Acres

PROPERTY DETAILS

Newly constructed building with good highway visibility on M-37. This 4,080 SF building would be perfect for a showroom, contractor, storage, retail/warehouse and/or offices. It currently has 1,200 SF of offices and 2,880 SF of warehouse/showroom space with 16' ceilings. There is a 14' overhead door and the warehouse space currently has a 1,280 SF showroom drywalled and separated from the warehouse. Construction is still being completed, so interior configuration can easily be customized. On private drive, know as Southpeak Drive.



Off M-37 with Private Drive

PROPERTY SPECIFICATIONS

| | |
|-------------------------|---|
| Property Type: | Manufacture/Warehouse, Office Building, Retail, Wholesale |
| Water/Sewer: | Municipal Water and Private Septic |
| Building Size: | 4,080 SQ FT |
| Land: | 0.93 Acres |
| Zoning: | Commercial / Manufacturing District |
| Parking: | On-Site |
| Road: | Privately Maintained, Blacktop |
| School District: | Traverse City School |

LOCATION INFORMATION

| | |
|--------------------|--|
| Township: | Blair |
| County: | Grand Traverse |
| Additional: | Private Drive: 1859 Southpeak Drive |

SALE PRICE:

\$415,000

1780 M-37 New Construction



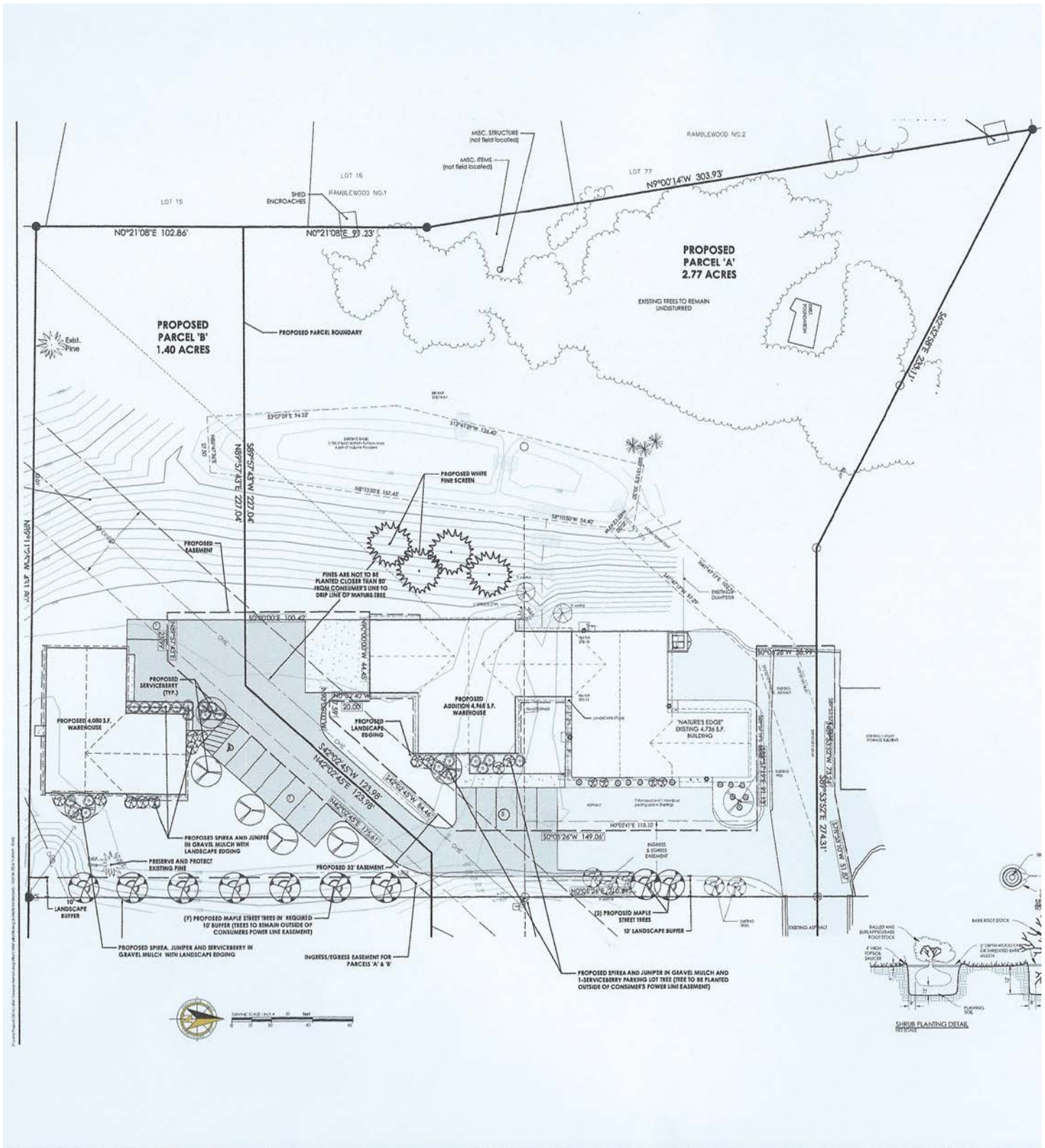
SCHMIDT REALTORS

PROPERTY OVERVIEW

PROPERTY PHOTOS



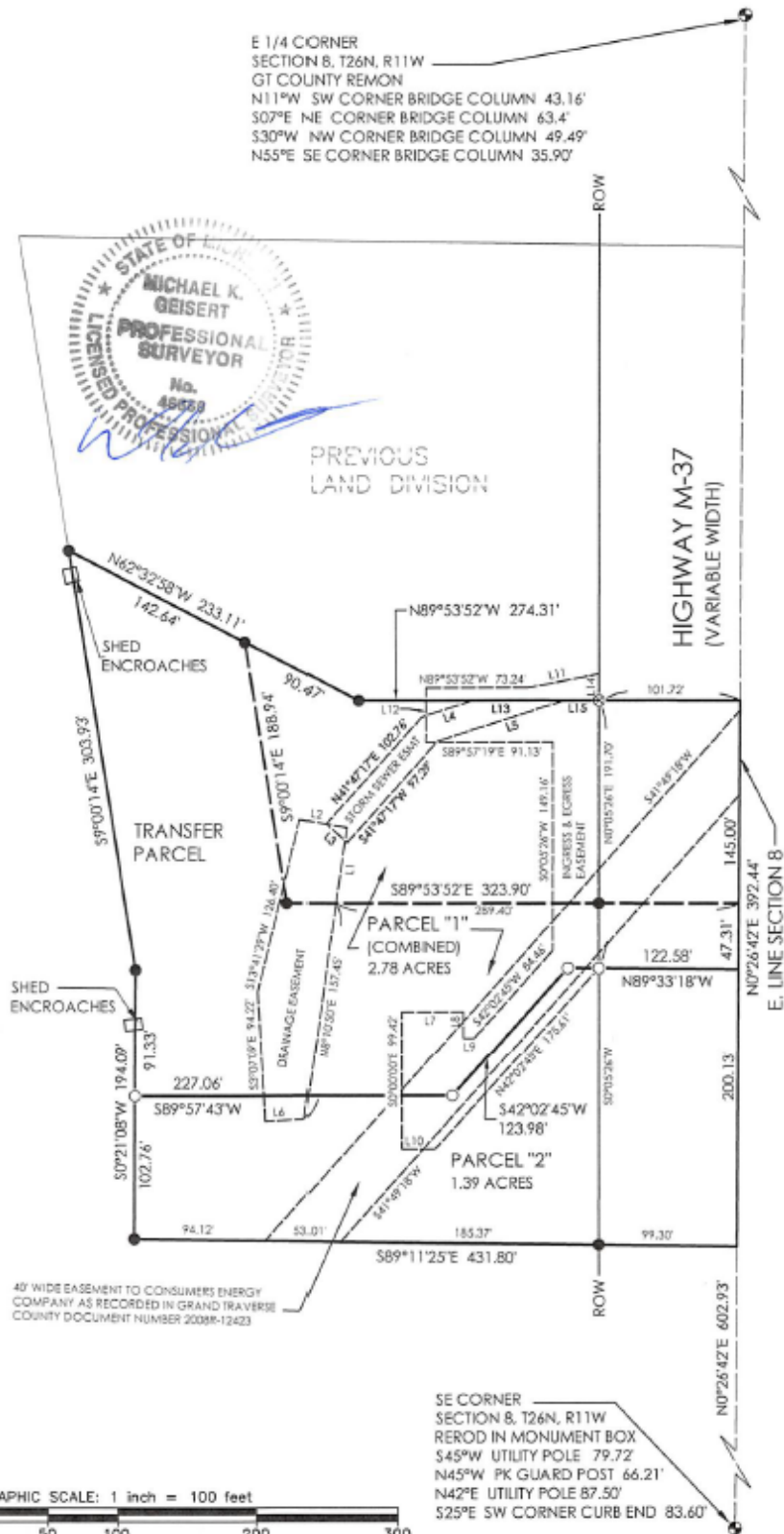
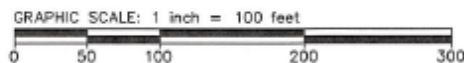
SITE PLAN



LAND SURVEY

| Line Table | | |
|------------|--------|-------------|
| Line # | Length | Direction |
| L1 | 54.40' | N8°10'50"E |
| L2 | 33.30' | N80°13'15"W |
| L3 | 20.00' | N48°12'43"W |
| L4 | 38.81' | N72°22'10"E |
| L5 | 95.89' | S72°22'10"W |
| L6 | 27.50' | N86°47'36"E |
| L7 | 44.45' | N90°00'00"W |
| L8 | 19.00' | N0°02'40"W |
| L9 | 7.59' | N90°00'00"W |
| L10 | 23.99' | N89°57'43"E |
| L11 | 51.87' | S78°53'10"W |
| L12 | 38.99' | S0°06'28"W |
| L13 | 65.66' | S89°53'52"E |
| L14 | 19.09' | N0°05'26"E |
| L15 | 24.56' | S89°53'52"E |

- Legend**
- Iron Found
 - Iron Set
 - ⊙ Concrete Monument
 - ⊕ Government Corner
 - ⊙ Nail Found
 - ⊙ Nail Set
 - (R) Record
 - (M) Measured
 - *- Fence

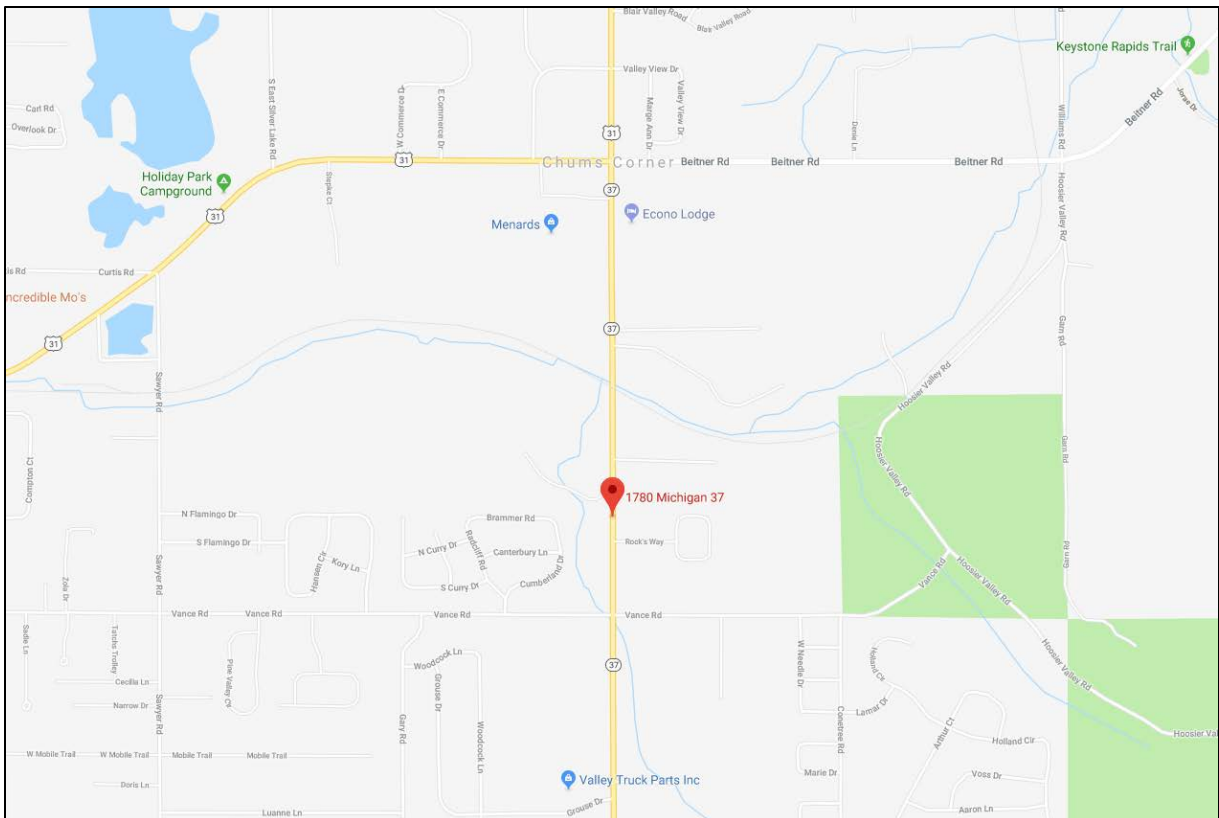
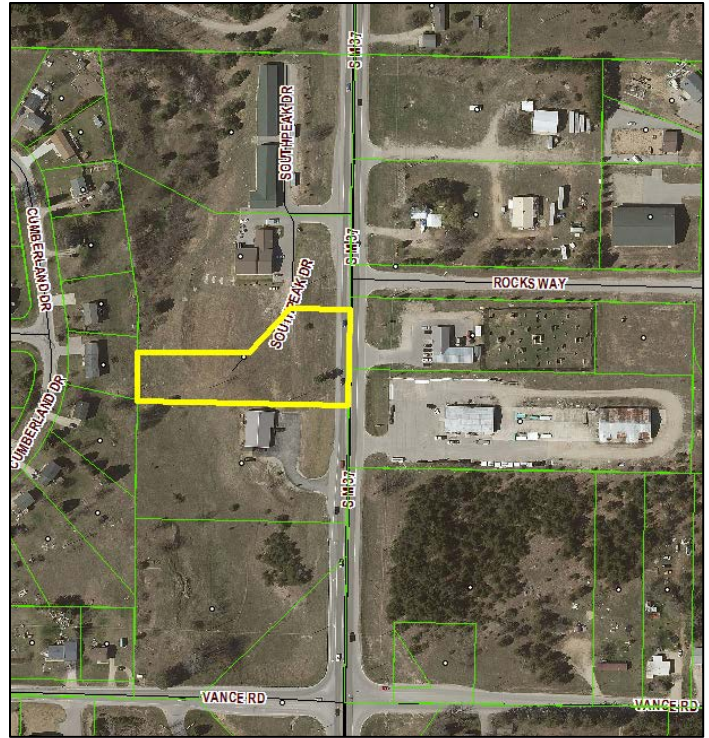
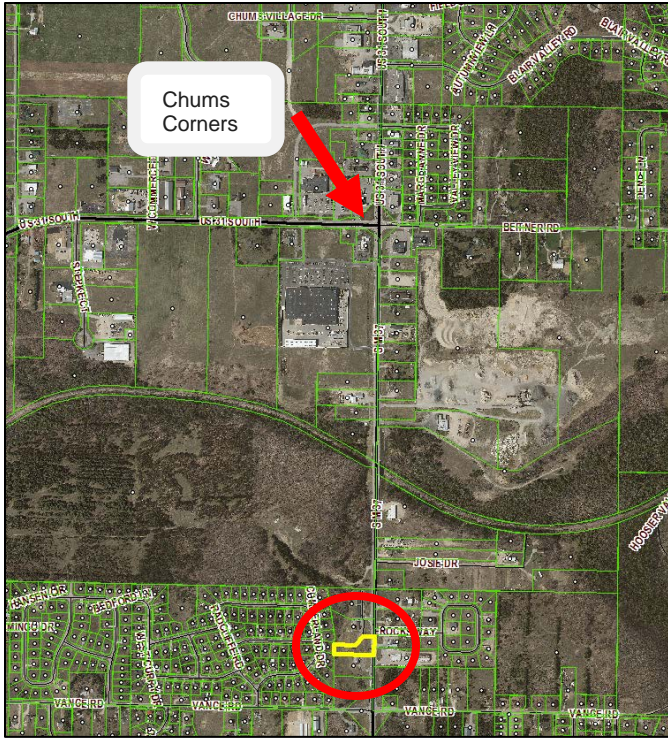


1780 M-37 New Construction



SCHMIDT REALTORS

MAPS & AERIALS



CONTACT INFORMATION

For more information, please contact:

Dan Stiebel, CCIM

Coldwell Banker Commercial
522 E. Front Street
Traverse City, MI 49686
Phone: (231) 929-2300
Fax: (231) 929-2322
Mobile: (231) 633-0432
Dan@realestateTC.com

Kayla Anderson, Assistant to Dan Stiebel

Coldwell Banker Commercial
522 E. Front Street
Traverse City, MI 49686
Phone: (231) 929-2300
Fax: (231) 929-2322
Mobile: (231) 642-0746
Kayla@realestateTC.com