

LEGACY EXPANSION PROPERTY

EXCLUSIVE LISTING | EAGLE, ADA COUNTY, IDAHO

LOCATION The property is located at the southeast corner of Highway 16 and Floating Feather in Eagle, Idaho.

SIZE ±77.55 acres

ASKING PRICE \$5,040,750 (\$65,000 per acre)

ENTITLEMENTS Property is part of the Legacy Master Planned Community with Development Agreement in place.

COMMENTS

- Eagle is one of the fastest growing sub-marketing with some of the highest average new home sales prices in the Boise MSA.
- Site plan includes Single-Family Residential, Multi-Family, and Commercial



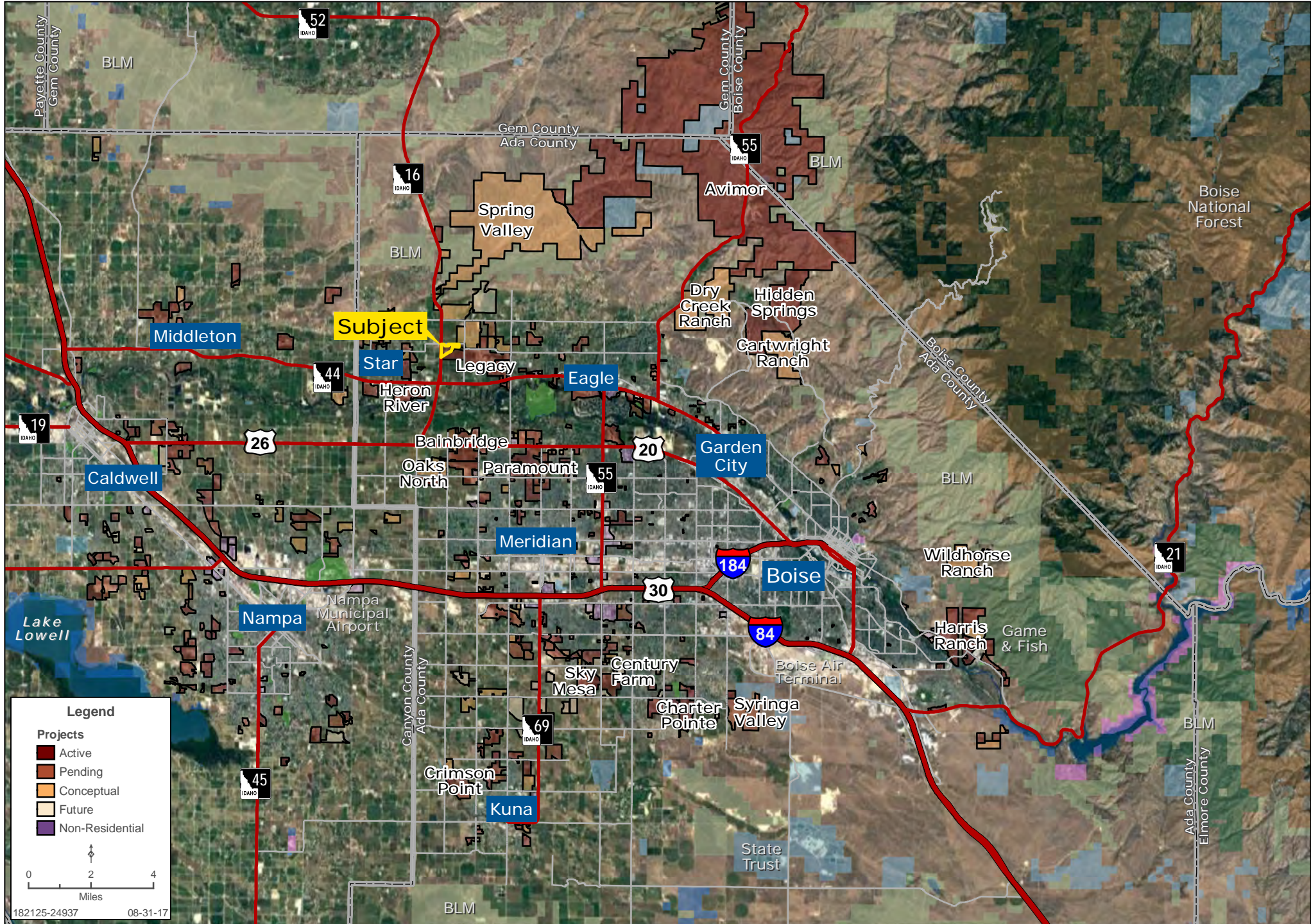
Tyler Johnson | tjohnson@landadvisors.com

3597 E Monarch Sky Lane, Suite F-240, Meridian, ID 83646 ph. 208.866.3579 | www.landadvisors.com

The information contained herein is from sources deemed reliable. We have no reason to doubt its accuracy but do not guarantee it. It is the responsibility of the person reviewing this information to independently verify it. This package is subject to change, prior sale or complete withdrawal. IDAda182125-7.18.18

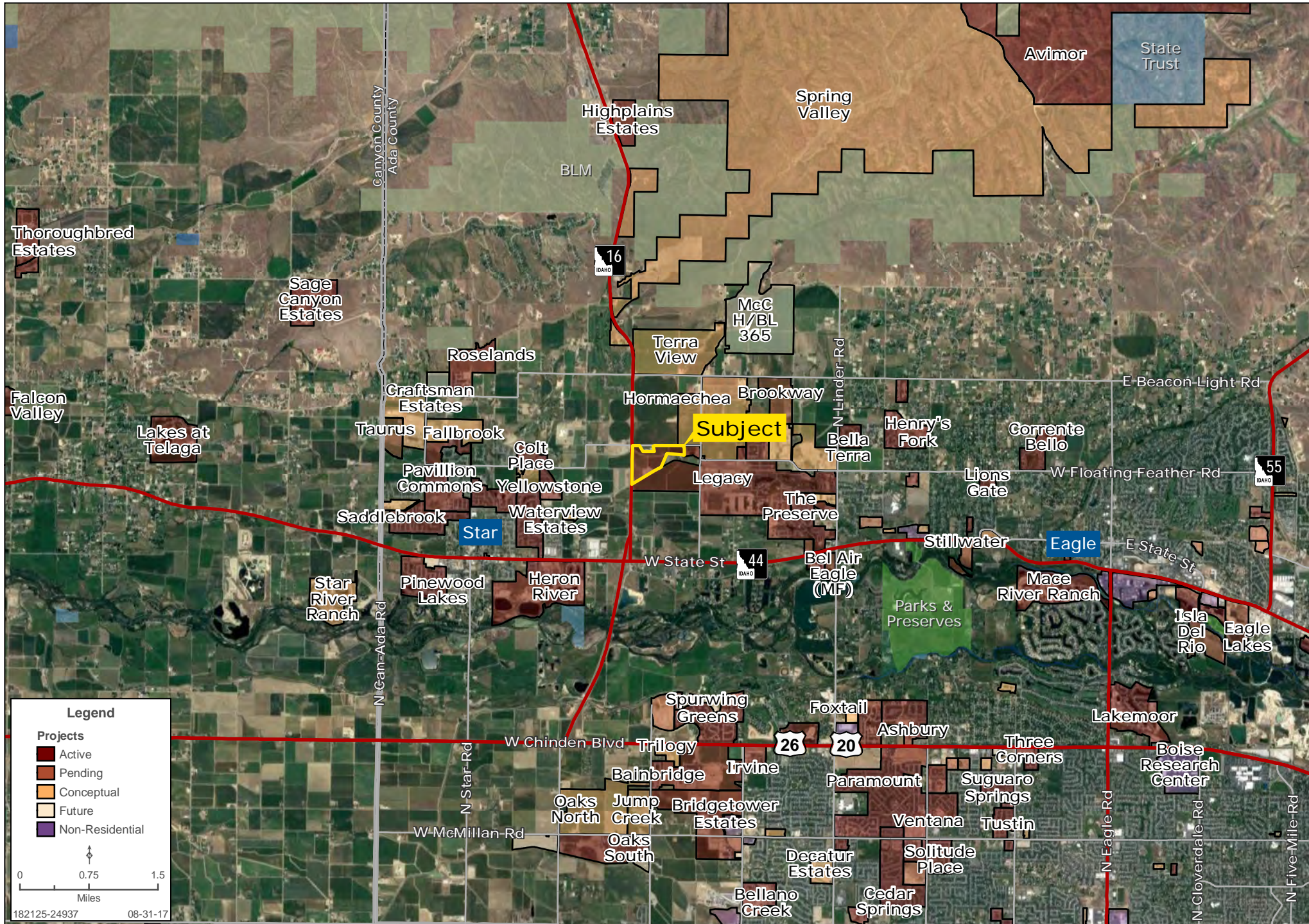
REGIONAL MAP

Tyler Johnson | 208.866.3579 | www.landadvisors.com



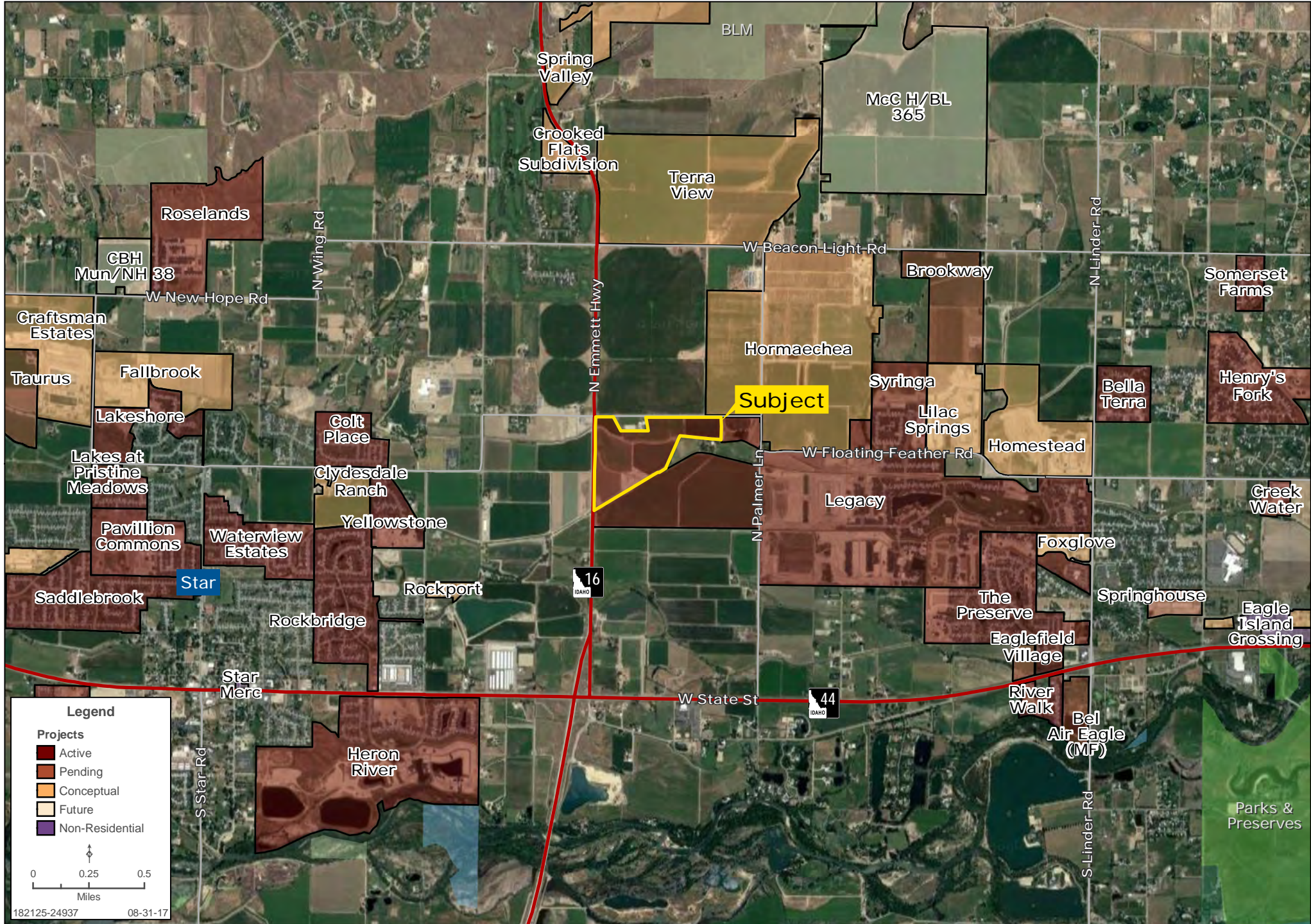
SURROUNDING DEVELOPMENT MAP

Tyler Johnson | 208.866.3579 | www.landadvisors.com



SURROUNDING AREA MAP

Tyler Johnson | 208.866.3579 | www.landadvisors.com



PROPERTY DETAIL MAP

Tyler Johnson | 208.866.3579 | www.landadvisors.com









RENNISON FODREA, INC.
ENGINEERS. SURVEYORS. PLANNERS.

LEGACY EXPANSION PARCEL
"CONCEPT PLAN"

DATE 03-19-09	P.M. JER	EXHIBIT 1
P.N. 2417	CAD TGA	

CASCADE
105 N. Main Street, P.O. Box 188
Casper, Idaho 83411
Office: 208.382.4902
Fax: 208.382.3410

SAGE
438 E. State St., Suite 140
Boise, Idaho 83720
Office: 208.338.2440
Fax: 208.338.2443