

# 1,997 SF LAB / SERVICE CENTER SPACE

## AVAILABLE FOR LEASE

1849-1897 CRAIG ROAD | SAINT LOUIS, MISSOURI 63146



### 1,997 SF LAB / OFFICE / SERVICE CENTER

- 1853 Craig Road
- Access to dock loading
- Excellent Craig Road visibility and access
- Located just south of Page Ave near I-270
- Less than five minutes from Creve Coeur and Westport Plaza amenities
- **LEASE RATE: \$8.95 PSF NNN**

For additional information, please contact:

**BO KEEFER**

bkeef@hutkin.com

314.708.1258 o.

314.973.1242 m.

**TONY GIARRATANO**

tony@hutkin.com

314.708.4922 o.

314.276.2352 m.

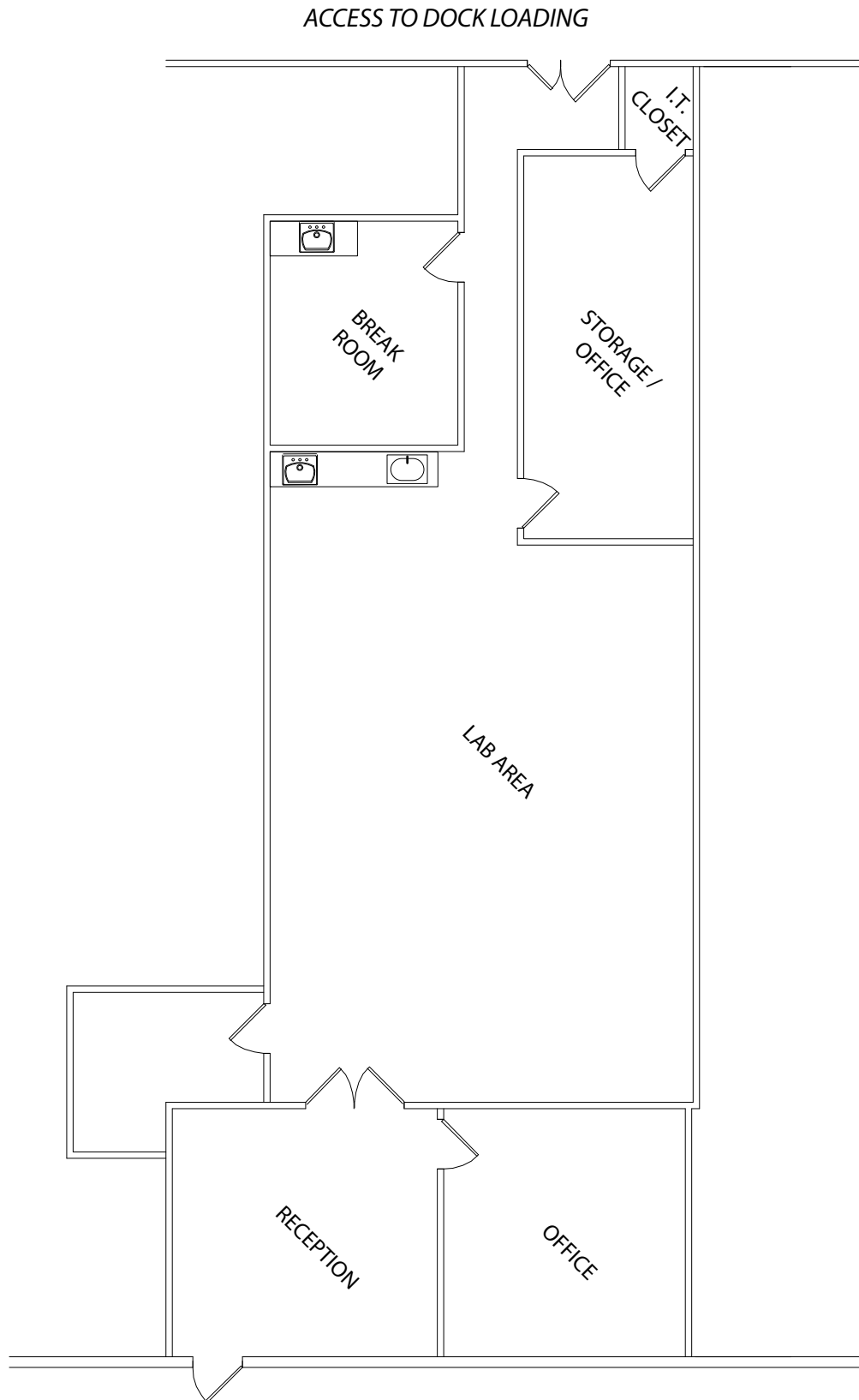
**HUTKIN**  
DEVELOPMENT COMPANY

10829 OLIVE BOULEVARD, SUITE 200  
ST. LOUIS, MISSOURI 63141  
314.872.9140 PHONE  
314.872.9001 FAX  
WWW.HUTKIN.COM

# 1,997 SF LAB / SERVICE CENTER SPACE

## AVAILABLE FOR LEASE

1849-1897 CRAIG ROAD | SAINT LOUIS, MISSOURI 63146



1853 CRAIG ROAD  
1,997 SF

# 1,997 SF LAB / SERVICE CENTER SPACE

## AVAILABLE FOR LEASE

1849-1897 CRAIG ROAD | SAINT LOUIS, MISSOURI 63146

