



FOR LEASE

8 California Street

SUITE 300, SAN FRANCISCO, CA

Suite 300



LARGE, OPEN SPACE PLAN

±3,415 RENTABLE SF

CORNER building at the foot of California Street directly across from the Hyatt Regency

GREAT access to BART and MUNI

DIRECT LEASE

EXPOSED ceilings, great natural light, operable windows, highly creative space

PREFERRED TERM: 5 years

AVAILABLE: July 1, 2020

INTERNET AT&T fiber optics, Wi-Line antennae & L3

RENTAL RATE: Negotiable

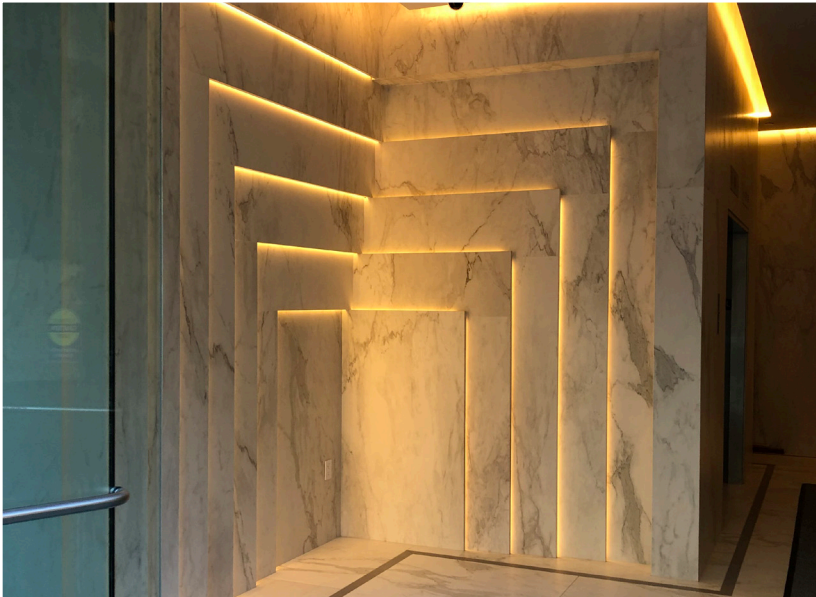


CLAYTON JEW
415.229.8920
clayton.jew@kidder.com
LIC N° 00834308

Kidder Mathews

KIDDER.COM

This information supplied herein is from sources we deem reliable. It is provided without any representation, warranty, or guarantee, expressed or implied as to its accuracy. Prospective Buyer or Tenant should conduct an independent investigation and verification of all matters deemed to be material, including, but not limited to, statements of income and expenses. Consult your attorney, accountant, or other professional advisor.

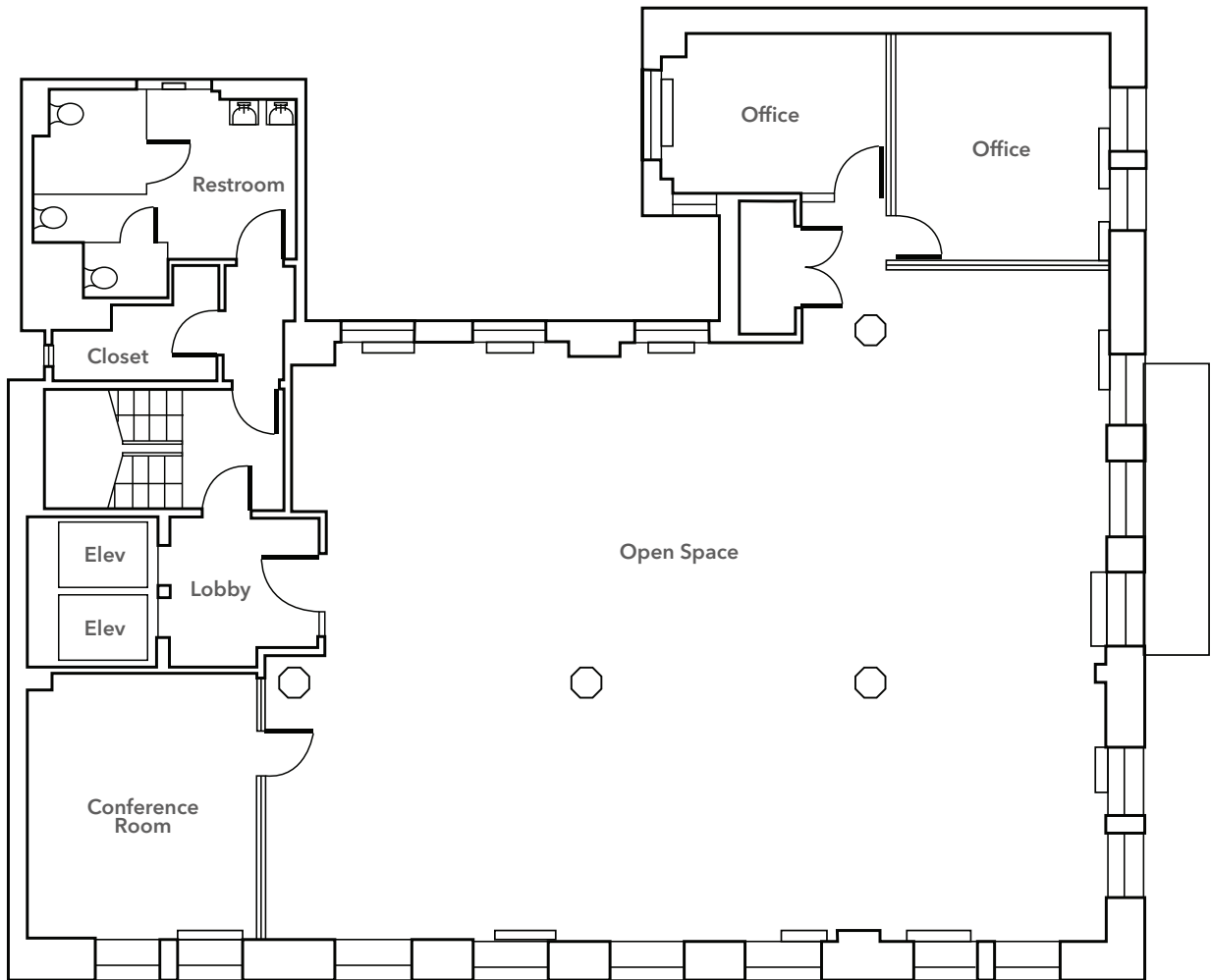


FOR LEASE

8 California Street

SUITE 300, SAN FRANCISCO, CA

Suite 300



CLAYTON JEW

415.229.8920

clayton.jew@kidder.com

LIC N° 00834308

KIDDER.COM

This information supplied herein is from sources we deem reliable. It is provided without any representation, warranty, or guarantee, expressed or implied as to its accuracy. Prospective Buyer or Tenant should conduct an independent investigation and verification of all matters deemed to be material, including, but not limited to, statements of income and expenses. Consult your attorney, accountant, or other professional advisor.



FOR LEASE

8 California Street

SUITE 300, SAN FRANCISCO, CA



CLAYTON JEW

415.229.8920

clayton.jew@kidder.com

LIC N° 00834308

KIDDER.COM

This information supplied herein is from sources we deem reliable. It is provided without any representation, warranty, or guarantee, expressed or implied as to its accuracy. Prospective Buyer or Tenant should conduct an independent investigation and verification of all matters deemed to be material, including, but not limited to, statements of income and expenses. Consult your attorney, accountant, or other professional advisor.

km Kidder
Mathews