

BOX SPACE ADJACENT TO KOHL'S

5627 N ELIZABETH STREET | PUEBLO, CO 81008

AREA ANCHORS:



PROPERTY HIGHLIGHTS

- Join Kohl's and other national retailers at Pueblo Crossing in Pueblo, CO
- 24,700 SF available with great frontage
- Several other national retailers are already in the immediate area including Dick's Sporting Goods, Bed, Bath & Beyond, Tractor Supply, Petco, Ulta, and Cavender's
- Great visibility from I-25

DEMOGRAPHICS

	3 MILE	5 MILES	7 MILES
Population	25,581	65,488	110,186
Avg HH Income	\$63,731	\$51,789	\$52,253
Employees	12,487	41,162	58,411
Businesses	1,171	3,461	5,085

TRAFFIC COUNTS

Source: CDOT 2016

On I-25 north of Eagleridge Blvd	42,000 cars/day
On Elizabeth St north of Wills Blvd	3,534 cars/day

1301 CANYON BLVD, SUITE 228 | BOULDER, CO 80302 | 303.534.0900 | WWW.SULLIVANHAYES.COM

SullivanHayes
B R O K E R A G E

Stan Johnson Co.

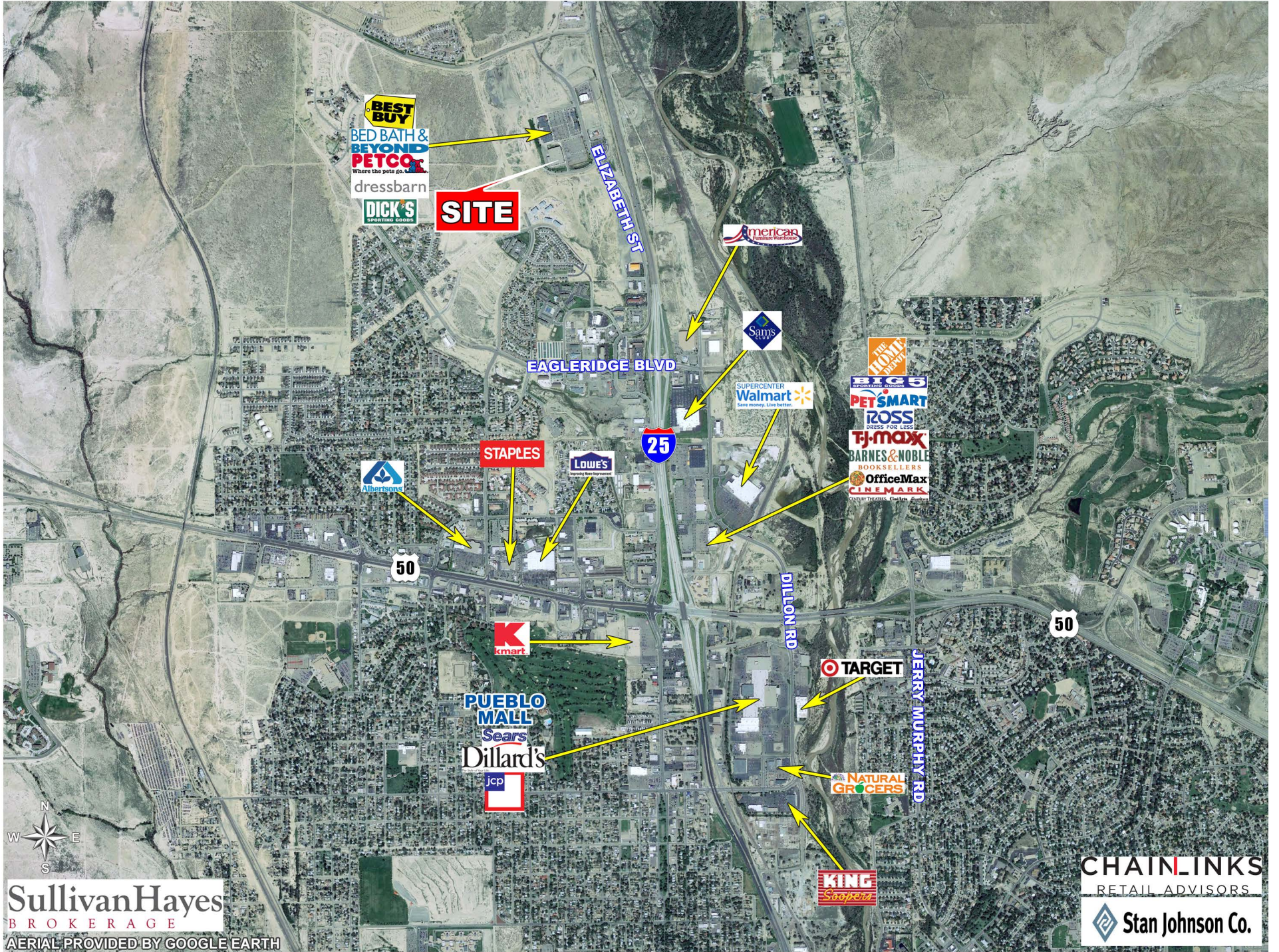
we are
RETAIL
CHAINLINKS
RETAIL ADVISORS

**AGENCY
DISCLOSURE**

Michael DePalma
720.382.7597 | mdepalma@sullivanhayes.com

David Dobek
720.382.7598 | ddobek@sullivanhayes.com

Sean Kulzer
720.382.7596 | skulzer@sullivanhayes.com



SullivanHayes
BROKERAGE

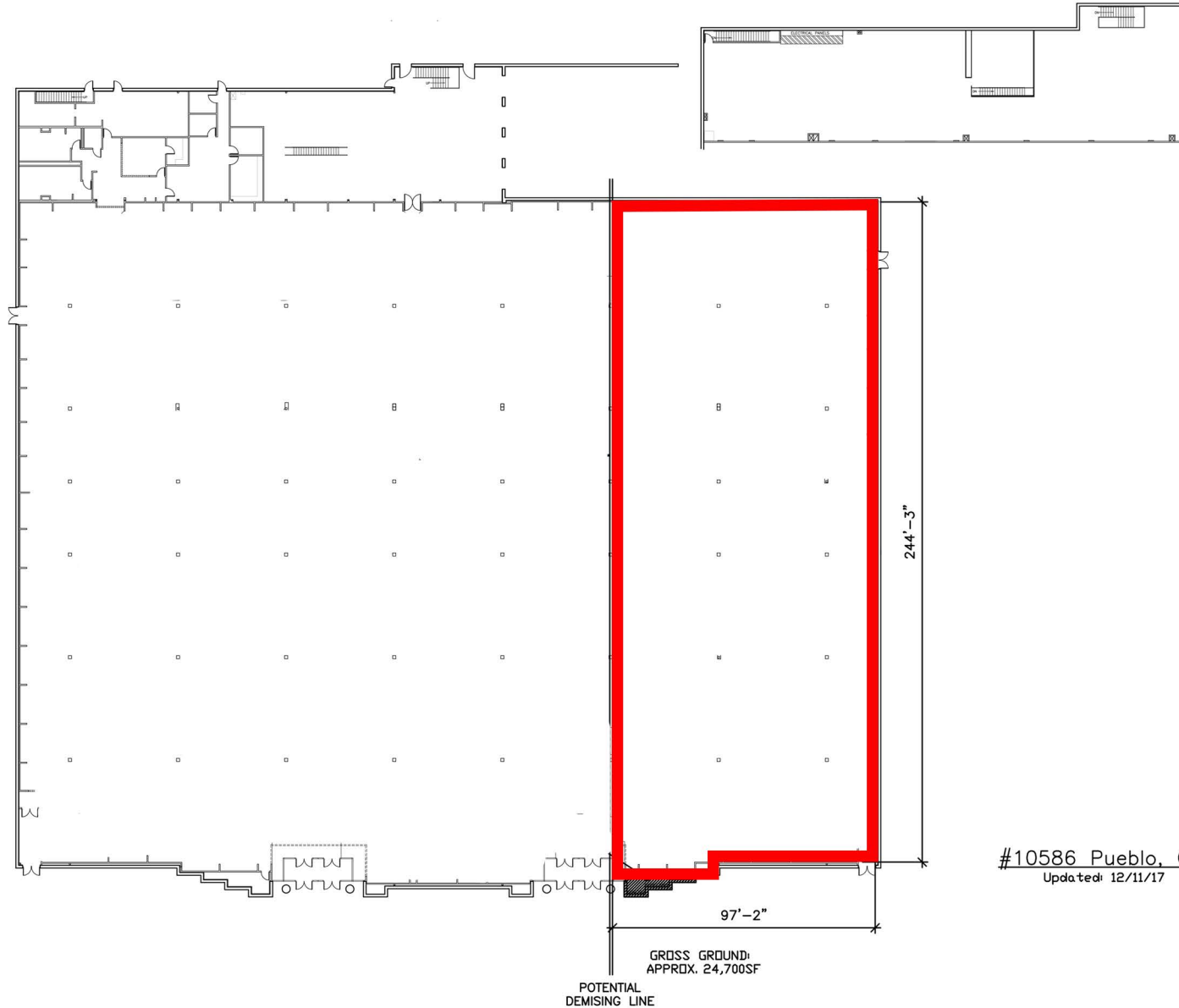
AERIAL PROVIDED BY GOOGLE EARTH

CHAINLINKS
RETAIL ADVISORS
Stan Johnson Co.

PROPOSED LOCATIONS FOR INGRESS, EGRESS, SITE LAYOUT, BUILDING PADS, BUILDING FOOTPRINTS, ANCHOR TENANT SPACES AND SMALL SHOP SPACES ARE ILLUSTRATIVE ONLY AND SUBJECT TO CHANGE AT ANY TIME. THE IDENTIFICATION OF PROPOSED TENANTS OR PROPOSED TENANT MIX ARE PRELIMINARY AND SUBJECT TO CHANGE AT ANY TIME. THE IDENTIFICATION OF EXISTING TENANTS OR BUSINESS IS AS OF THE DATE HEREOF AND NOT A GUARANTEE OF FUTURE OCCUPANCY OR OPERATION. R:\AERIALS\KOHLS\PUEBLO_TA.PSD

PRIME RETAIL SPACE ADJACENT TO KOHL'S

PUEBLO, CO 81008 | 5627 N ELIZABETH STREET | NWC WILLS BLVD & ELIZABETH ST | PUEBLO #586



#10586 Pueblo, CO
Updated: 12/11/17

SullivanHayes
B R O K E R A G E

MICHAEL DePALMA
720.382.7597
mdepalma@sullivanhayes.com

DAVID DOBEK
720.382.7598
ddobek@sullivanhayes.com

SEAN KULZER
720.382.7596
skulzer@sullivanhayes.com

CHAINLINKS
RETAIL ADVISORS

 **Stan Johnson Co.**

The information contained herein has been compiled from sources believed to be reliable. However, SullivanHayes has not independently verified the same and makes no guarantee, warranty or representation about such information. Any opinions, assumptions or projections used are for illustrative purposes only and do not necessarily represent the current or future performance of the property. Site plans, renderings, aerials, marketing data, pricing and other terms are subject to change at any time. You and your tax, financial and legal advisors should make a thorough independent investigation of the property to determine its suitability to your needs. SullivanHayes, its broker associates and its salespersons, are or will be acting as agents of the seller/lessor with the duty to represent the interests of the seller/lessor. SullivanHayes will not act as your agent unless an agency agreement is signed and in effect.