



LEASING OPPORTUNITY FOR MEDICAL OFFICE SPACE LOCATED IN NORTHWEST HOUSTON

# CYPRESSWOOD PROFESSIONAL CENTER

8111 CYPRESSWOOD DRIVE | SPRING, TEXAS 77379

 **TRANSWESTERN**<sup>®</sup>



LEASING OPPORTUNITY FOR MEDICAL OFFICE SPACE LOCATED IN NORTHWEST HOUSTON

# CYPRESSWOOD PROFESSIONAL CENTER

8111 CYPRESSWOOD DRIVE | SPRING, TEXAS 77379

## PROPERTY DESCRIPTION

40,082 RSF, Class B Medical Office Building

## LOCATION

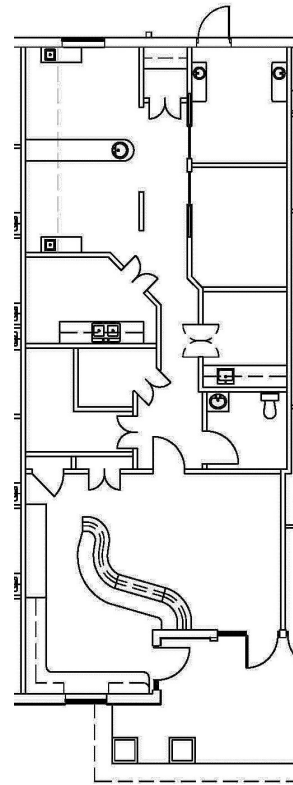
Located in the FM 1960/249 submarket with easy access to FM 1960, SH 249 and Beltway 8

## COMMENTS

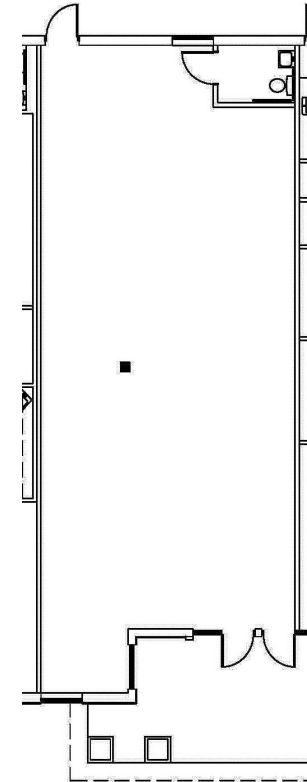
- Less than 4 miles from St. Luke's Hospital at the Vintage and Methodist Willowbrook Hospital
- Anchored by Texas Childrens Hospital
- Champion Forest Location with good visibility
- Building and monument signage available
- Strong tenant mix
- High parking ratio

## AVAILABILITY

SUITE	SIZE
105	1,463 RSF
107	1,462 RSF



SUITE 105



SUITE 107



1900 West Loop South, Suite 1300  
Houston, Texas 77027

T: 713.270.7700 F: 713.270.6285  
www.transwestern.com

**Christian Connell**  
Leasing Associate  
713.231-1588  
christian.connell@transwestern.com

**Scott Carter**  
Vice President  
713.270.3363  
scott.carter@transwestern.com

**Brandy Bellow Spinks**  
Vice President  
713.272.1245  
brandy.bellow@transwestern.com