

LAND FOR SALE

Limaburg Road & Elijah Creek Road
Hebron, KY 41048

PROPERTY SUMMARY

Acreage: 4.8

Zoning: C-2

Price: \$175,000 per acre - **REDUCED**

DESCRIPTION

Prime level commercial parcels located just off S.R. 237 (North Bend Road) at Limaburg Road at a traffic light. Site is just 1 mile south of the I-275 Hebron Exit.

Two (2) parcels of C-2 zoned property which total 4.8 acres. Parcel 1 is 3.18 acres and Parcel 2 is 1.62 acres. The other tract is nearby on Elijah Creek Road. Property has utilities.



PLAT

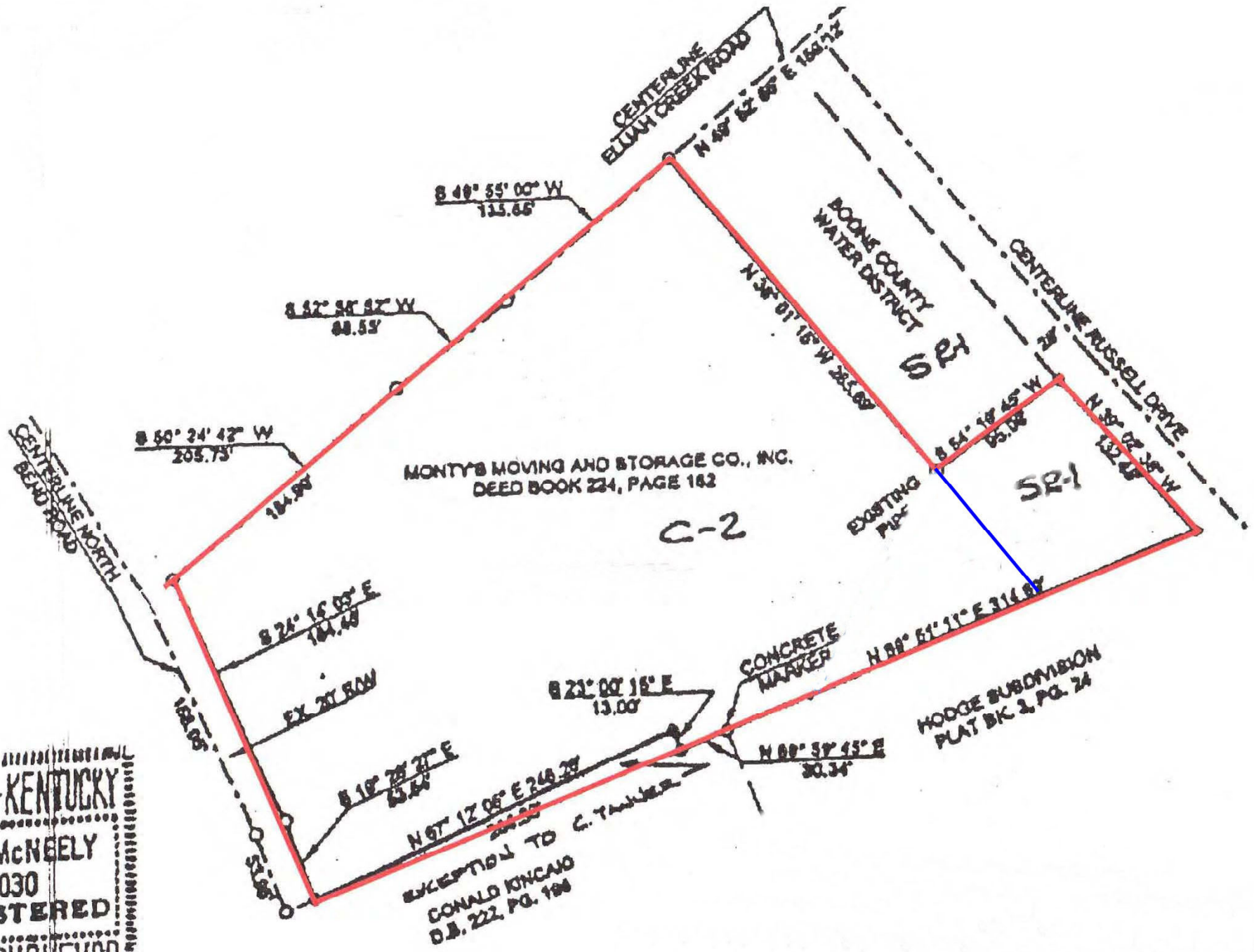


F1RST
COMMERCIAL
REALTY INC.

Ray Merkel
73 Cavalier Blvd., Suite 325
Florence, KY 41042
Office: 859-371-9000
Cell: 859-653-2665
raymerkel@firstcommrealty.com
www.firstcommrealty.com



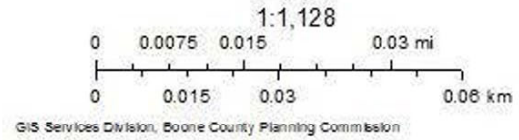
KENTUCKY
ACNEELY
030
STERED
SURVEYOR

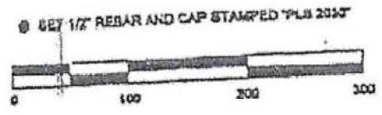
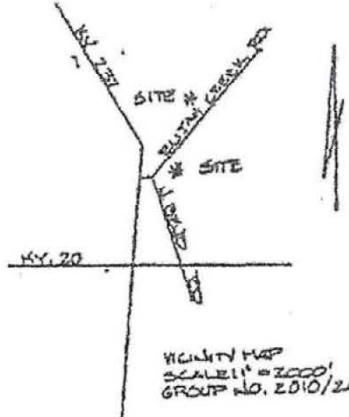
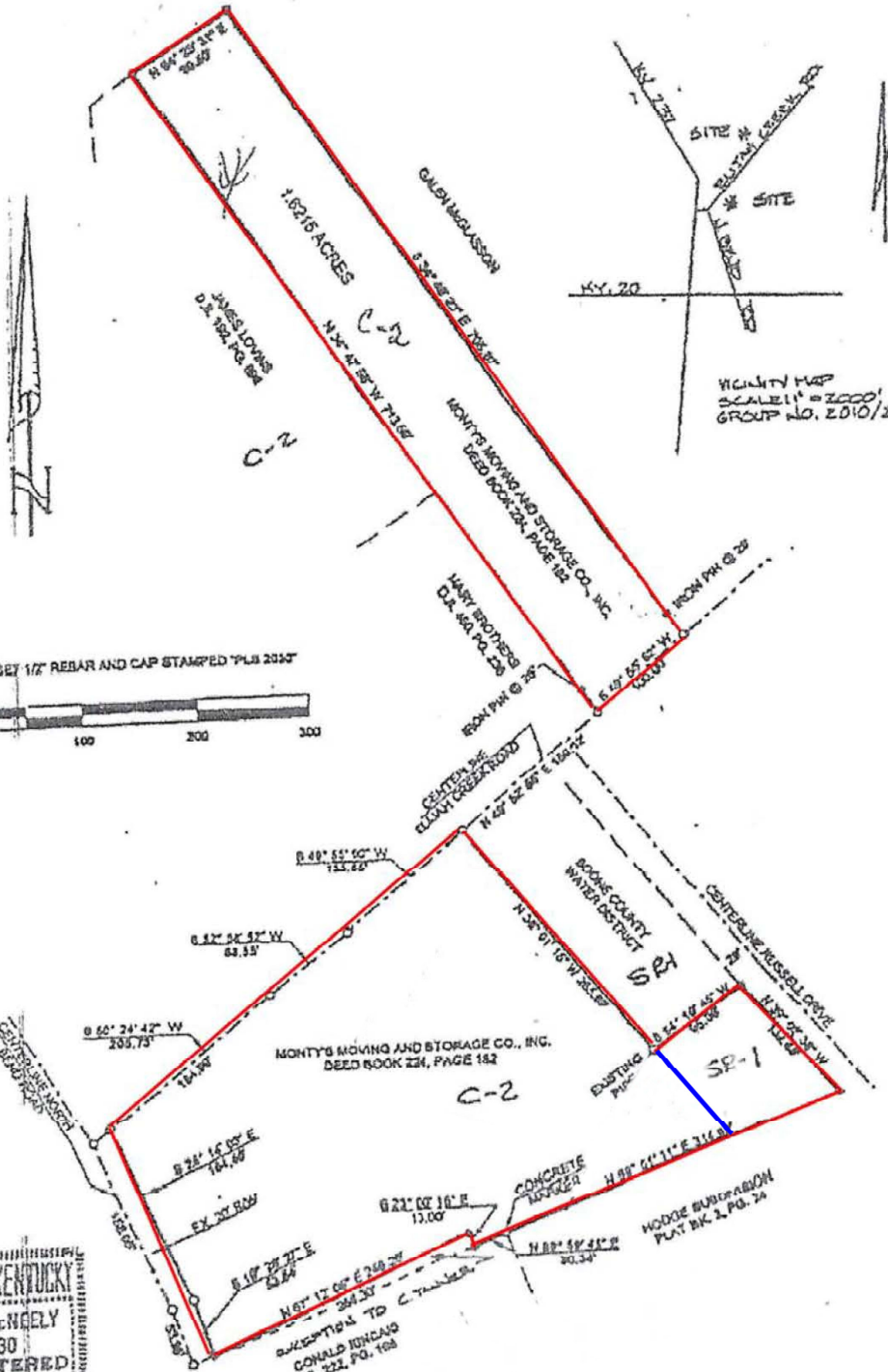


Boone County PVA's Office

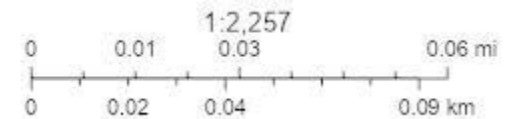
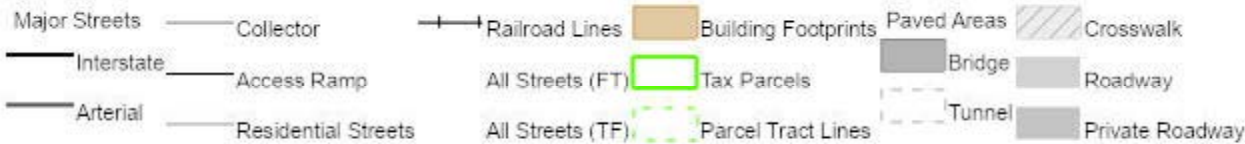


- | | | | |
|----------------------|-------------|---------------------|--------------------|
| County Boundary | Arterial | Residential Streets | Parcel Tract Lines |
| Major Streets | Collector | Railroad Lines | Runways |
| Interstate | Access Ramp | Tax Parcels | Runway Numbers |





Boone County PVA's Office



GIS Services Division, Boone County Planning Commission