



BOMIER PROPERTIES, INC.

5553 Waterford Lane, Suite A • Appleton, WI 54913 • Office (920) 739-5300 • Fax (920) 739-7007
Please Contact: Troy Rademann, CCIM • Email: troyrademann@gmail.com • Website: www.bomier.com

FOR LEASE

949 E. JOHNSON STREET • CITY OF FOND DU LAC • FOND DU LAC COUNTY

LEASE PRICE - \$12.50/SF NNN

OFFICE/RETAIL SPACE AVAILABLE

- Building Size – 4,512 SF
- Space Available – 2,209 SF
- Could be fitted for 1,000 to 2,209 SF
- Previously used as salon
- Space Includes a Reception Area, 8-9 Stations and Private Message Room



CALL FOR MORE DETAILS

TROY RADEMANN, CCIM
MOBILE: (920) 913-7355
EMAIL: troyrademann@gmail.com





BOMIER PROPERTIES, INC.

5553 Waterford Lane, Suite A • Appleton, WI 54913 • Office (920) 739-5300 • Fax (920) 739-7007
Please Contact: Troy Rademann, CCIM • Email: troyrademann@gmail.com • Website: www.bomier.com

**COMMERCIAL
REAL ESTATE
PROFESSIONALS**

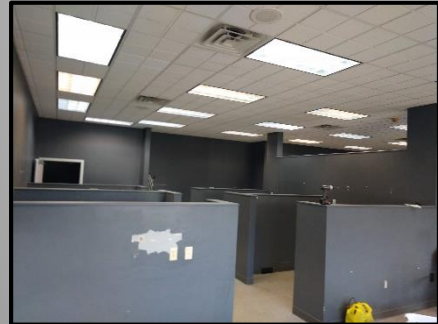
949 E. JOHNSON STREET • CITY OF FOND DU LAC • FOND DU LAC COUNTY

LEASE PRICE - \$12.50/SF NNN

**HIGH
TRAFFIC
COUNTS**



949 E. Johnson Street has 2,209 SF available for lease. The building is also available for sale.



- Lot Size – 0.470 Acres
- Parking Area - 8,000 SF
 - Parking Spaces – 22 Spaces in Front, More Available in Rear of Building
- Year Built - 1994



OFFICE/RETAIL SPACE AVAILABLE



BOMIER PROPERTIES, INC.

5553 Waterford Lane, Suite A • Appleton, WI 54913 • Office (920) 739-5300 • Fax (920) 739-7007
 Please Contact: Troy Rademann, CCIM • Email: troyrademann@gmail.com • Website: www.bomier.com

**COMMERCIAL
 REAL ESTATE
 PROFESSIONALS**

949 E. JOHNSON STREET • CITY OF FOND DU LAC • FOND DU LAC COUNTY



**HIGH
 TRAFFIC
 COUNTS**

	Street	Cross Street	Cross Str Dist	Count Year	Avg Daily Volume	Volume Type	Miles from Subject Prop
1	Prairie Rd	Boudry Ct	0.02 S	2017	700	MPSI	.10
2	Pine Lake Dr	Campus Dr	0.07 NE	2017	350	MPSI	.12
3	Meadow Creek Ln	Prairie Rd	0.13 W	2017	40	MPSI	.18
4	University Dr	State Highway 23	0.08 S	2017	700	MPSI	.24
5	Spring Lake Dr	Country Ln	0.10 N	2017	150	MPSI	.43
6	Country Ln	Deer Run	0.03 N	2017	240	MPSI	.56
7	N National Ave	Ledgeview Blvd	0.01 N	2017	7,500	MPSI	.59
8	N National Ave	Stow St	0.05 N	2017	5,200	MPSI	.61
9	Cherry Ln	N National Ave	0.06 NW	2017	80	MPSI	.62
10	E Johnson St	N National Ave	0.05 E	2017	16,300	MPSI	.63

BROKER DISCLOSURE TO NON-RESIDENTIAL CUSTOMERS

1 Prior to negotiating on your behalf the Broker must provide you the following disclosure statement:

2 **BROKER DISCLOSURE TO CUSTOMERS**

3 You are a customer of the broker. The broker is either an agent of another party in the transaction or a subagent of another broker
4 who is the agent of another party in the transaction. The broker, or a salesperson acting on behalf of the broker, may provide
5 brokerage services to you. Whenever the broker is providing brokerage services to you, the broker owes you, the customer, the
6 following duties:

7 ■ The duty to provide brokerage services to you fairly and honestly.

8 ■ The duty to exercise reasonable skill and care in providing brokerage services to you.

9 ■ The duty to provide you with accurate information about market conditions within a reasonable time if you request it, unless
10 disclosure of the information is prohibited by law.

11 ■ The duty to disclose to you in writing certain material adverse facts about a property, unless disclosure of the information is
12 prohibited by law (See Lines 47-55).

13 ■ The duty to protect your confidentiality. Unless the law requires it, the broker will not disclose your confidential information or the
14 confidential information of other parties (See Lines 22-39).

15 ■ The duty to safeguard trust funds and other property the broker holds.

16 ■ The duty, when negotiating, to present contract proposals in an objective and unbiased manner and disclose the advantages and
17 disadvantages of the proposals.

18 Please review this information carefully. A broker or salesperson can answer your questions about brokerage services, but if you
19 need legal advice, tax advice, or a professional home inspection, contact an attorney, tax advisor, or home inspector.

20 This disclosure is required by section 452.135 of the Wisconsin statutes and is for information only. It is a plain-language summary of
21 a broker's duties to a customer under section 452.133 (1) of the Wisconsin statutes.

22 **CONFIDENTIALITY NOTICE TO CUSTOMERS**

23 BROKER WILL KEEP CONFIDENTIAL ANY INFORMATION GIVEN TO BROKER IN CONFIDENCE, OR ANY INFORMATION
24 OBTAINED BY BROKER THAT HE OR SHE KNOWS A REASONABLE PERSON WOULD WANT TO BE KEPT CONFIDENTIAL,
25 UNLESS THE INFORMATION MUST BE DISCLOSED BY LAW OR YOU AUTHORIZE THE BROKER TO DISCLOSE PARTICULAR
26 INFORMATION. A BROKER SHALL CONTINUE TO KEEP THE INFORMATION CONFIDENTIAL AFTER BROKER IS NO LONGER
27 PROVIDING BROKERAGE SERVICES TO YOU.

28 THE FOLLOWING INFORMATION IS REQUIRED TO BE DISCLOSED BY LAW:

29 1. MATERIAL ADVERSE FACTS, AS DEFINED IN SECTION 452.01 (5g) OF THE WISCONSIN STATUTES (SEE LINES 47-55).

30 2. ANY FACTS KNOWN BY THE BROKER THAT CONTRADICT ANY INFORMATION INCLUDED IN A WRITTEN INSPECTION
31 REPORT ON THE PROPERTY OR REAL ESTATE THAT IS THE SUBJECT OF THE TRANSACTION.

32 TO ENSURE THAT THE BROKER IS AWARE OF WHAT SPECIFIC INFORMATION YOU CONSIDER CONFIDENTIAL, YOU MAY LIST
33 THAT INFORMATION BELOW (SEE LINES 35-36). AT A LATER TIME, YOU MAY ALSO PROVIDE THE BROKER WITH OTHER
34 INFORMATION YOU CONSIDER TO BE CONFIDENTIAL.

35 **CONFIDENTIAL INFORMATION:**

36 _____
37 **NON-CONFIDENTIAL INFORMATION** (The following information may be disclosed by Broker):

38 _____
39 (INSERT INFORMATION YOU AUTHORIZE THE BROKER TO DISCLOSE SUCH AS FINANCIAL QUALIFICATION INFORMATION.)

40 **CONSENT TO TELEPHONE SOLICITATION**

41 I/We agree that the Broker and any affiliated settlement service providers (for example, a mortgage company or title company) may
42 call our/my home or cell phone numbers regarding issues, goods and services related to the real estate transaction until I/we
43 withdraw this consent in writing. **List Home/Cell Numbers:**

44 **SEX OFFENDER REGISTRY**

45 *Notice: You may obtain information about the sex offender registry and persons registered with the registry by contacting the*
46 *Wisconsin Department of Corrections on the Internet at: <http://offender.doc.state.wi.us/public/> or by phone at 877-234-0085.*

47 **DEFINITION OF MATERIAL ADVERSE FACTS**

48 A "material adverse fact" is defined in Wis. Stat. § 452.01 (5g) as an adverse fact that a party indicates is of such significance, or that
49 is generally recognized by a competent licensee as being of such significance to a reasonable party, that it affects or would affect
50 the party's decision to enter into a contract or agreement concerning a transaction or affects or would affect the party's decision
51 about the terms of such a contract or agreement. An "adverse fact" is defined in Wis. Stat. § 452.01(1e) as a condition or occurrence
52 that a competent licensee generally recognizes will significantly and adversely affect the value of the property, significantly reduce
53 the structural integrity of improvements to real estate, or present a significant health risk to occupants of the property; or information
54 that indicates that a party to a transaction is not able to or does not intend to meet his or her obligations under a contract or
55 agreement made concerning the transaction.

No representation is made as to the legal validity of any provision or the adequacy of any provision in any specific transaction.

Copyright, 2006 by Wisconsin REALTORS® Association

Bomier Properties Inc 5553 Waterford Ln., Appleton WI 54913-8402

Produced with ZipForm™

Drafted by Attorney Richard J. Staff

Phone (920) 736-5300

Fax: (920) 736-7007

Broker Disclos
Michigan 48035 www.zipform.com