

48± Acres - Will Divide

3000 Hawaiian Village Dr.

Macon, GA 31206



LOT SIZE: 48± Total Acres with 19± Acres cleared and graded. Will Divide.

ZONING: C-2

TRAFFIC: 60,700 vehicles per day on I-475

LOCATION: Bibb County, just off Eisenhower Pkwy near Middle Georgia State University.

NOTES: 48± Acres fronting I-475. Call for Site Plan. Build to Suit. Perfect for warehouse, distribution facility. High visibility with easy access from Eisenhower Parkway.

Sales Price: \$135,000 per acre

**FOR MORE
INFORMATION
CONTACT**

Chad W. Bevill
Cell: 478-954-2159
Main: 478-746-9421

cbevill@fickling.com
www.chadbevill.com
commercial.fickling.com

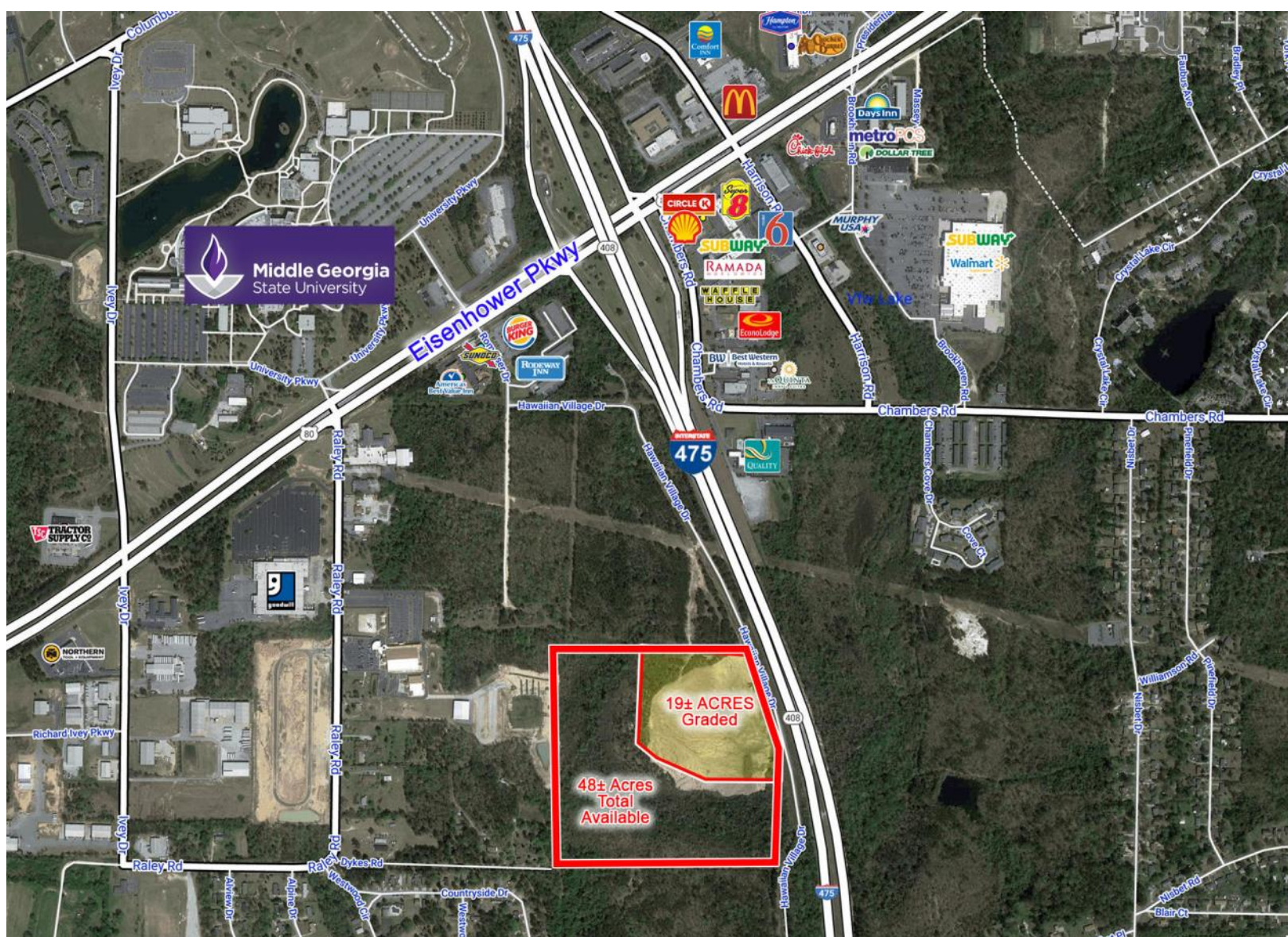
commercial.fickling.com

577 Mulberry St, Suite 1100 * P.O. Box 310 * Macon, GA 31202 | Phone (478) 746-9421 | Fax (478) 742-2015

This information is from resources deemed to be reliable, no warranties or guarantees for accuracy are made by Fickling and Company

48± Acres - Will Divide
3000 Hawaiian Village Dr.
Macon, GA 31206

FICKLING & COMPANY
A Full Service Real Estate Company
commercial.fickling.com



**FOR MORE
INFORMATION
CONTACT**

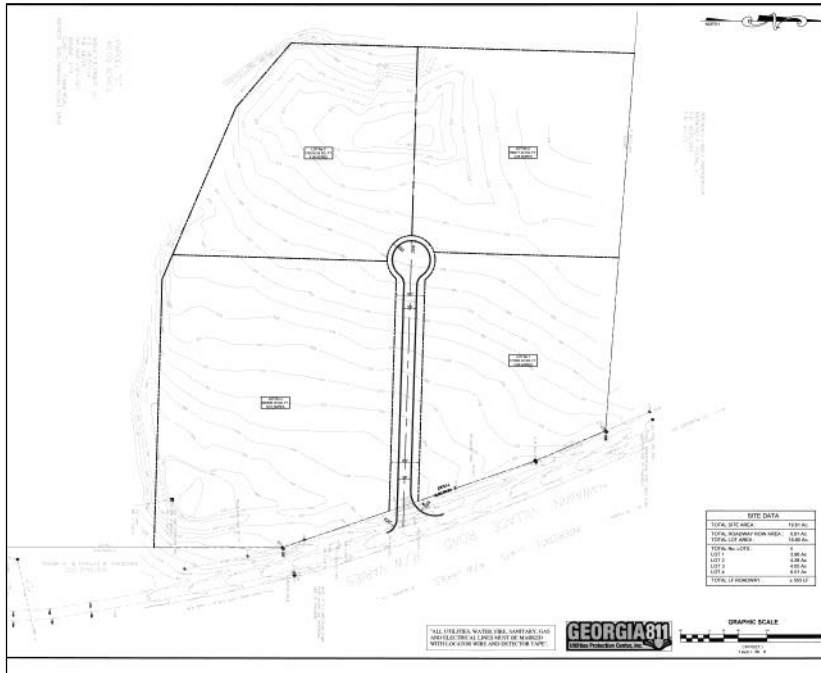
Chad W. Bevill
Cell: 478-954-2159
Main: 478-746-9421

cbevill@fickling.com
www.chadbevill.com
commercial.fickling.com

commercial.fickling.com

577 Mulberry St, Suite 1100 * P.O. Box 310 * Macon, GA 31202 | Phone (478) 746-9421 | Fax (478) 742-2015
This information is from resources deemed to be reliable, no warranties or guarantees for accuracy are made by Fickling and Company

48± Acres - Will Divide
 3000 Hawaiian Village Dr.
 Macon, GA 31206



Conceptual 1

Conceptual 2



**FOR MORE
 INFORMATION
 CONTACT**

Chad W. Bevill
 Cell: 478-954-2159
 Main: 478-746-9421

cbevill@fickling.com
www.chadbevill.com
commercial.fickling.com

commercial.fickling.com