

# 126 E. SIXTH STREET

Cincinnati, OH 45202

New Construction Street-Level Retail/Resaurant Space / For Lease

nada BOCA SOTTO 



**Terry Ohnmeis** / Director / [terry.ohnmeis@cushwake.com](mailto:terry.ohnmeis@cushwake.com) / +1 513 763 3059  
**Andrew Sellet** / Managing Director / [andrew.sellet@cushwake.com](mailto:andrew.sellet@cushwake.com) / +1 513 763 3053

**WE ARE  
THE CENTER  
OF RETAIL**

**CUSHWAKERETAIL.COM**



©2018 Cushman & Wakefield. All rights reserved. The information contained in this communication is strictly confidential. This information has been obtained from sources believed to be reliable but has not been verified. NO WARRANTY OR REPRESENTATION, EXPRESS OR IMPLIED, IS MADE AS TO THE CONDITION OF THE PROPERTY (OR PROPERTIES) REFERENCED HEREIN OR AS TO THE ACCURACY OR COMPLETENESS OF THE INFORMATION CONTAINED HEREIN, AND SAME IS SUBMITTED SUBJECT TO ERRORS, OMISSIONS, CHANGE OF PRICE, RENTAL OR OTHER CONDITIONS, WITHDRAWAL WITHOUT NOTICE, AND TO ANY SPECIAL LISTING CONDITIONS IMPOSED BY THE PROPERTY OWNER(S). ANY PROJECTIONS, OPINIONS OR ESTIMATES ARE SUBJECT TO UNCERTAINTY AND DO NOT SIGNIFY CURRENT OR FUTURE PROPERTY PERFORMANCE.

## New Construction Street-Level Retail/Resaurant Space / For Lease

### RETAIL SPACE

2,298 SF

### RENT

\$28.00/psf NNN

### NEIGHBORING TENANTS

Nada, Boca,Sotto and Igby's next door. Starbucks, Wahlburger's, Mr. Sushi, and Silver Ladel.

### COMMENTS

- 1st floor retail/restaurant space in the heart of CBD
- Delivered Q3 2019 along with 52 residential units upstairs
- 3 of the top 10 best restaurants in Cincinnati are located on the same block.



## NEIGHBORHOOD DEMOGRAPHICS



#### POPULATION

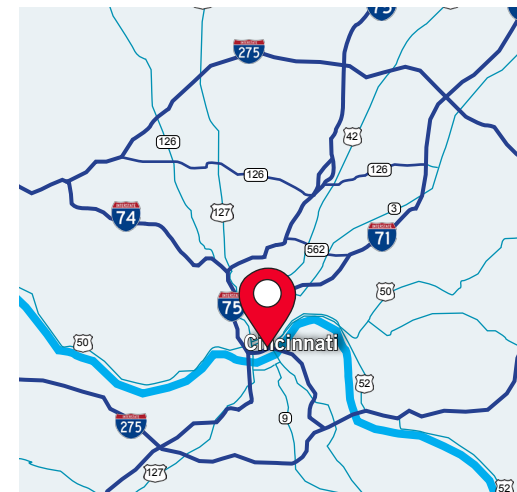


#### AVERAGE HOUSEHOLD INCOME



#### DAYTIME POPULATION

1 Mile	120,566	\$84,875	128,337
3 Miles	141,182	\$61,089	278,933
5 Miles	305,115	\$68,031	386,034



New Construction Street-Level Retail/Resaurant Space / For Lease



**Terry Ohnmeis** / Director / [terry.ohnmeis@cushwake.com](mailto:terry.ohnmeis@cushwake.com) / +1 513 763 3059  
**Andrew Sellet** / Managing Director / [andrew.sellet@cushwake.com](mailto:andrew.sellet@cushwake.com) / +1 513 763 3053

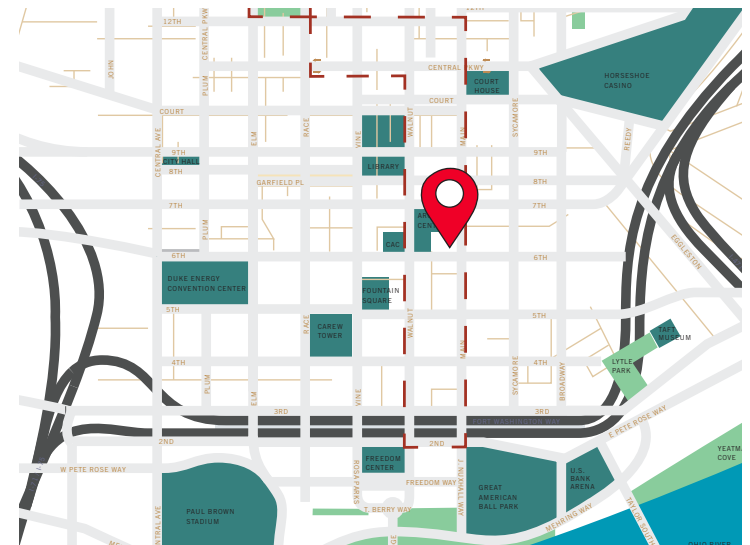
©2018 Cushman & Wakefield. All rights reserved. The information contained in this communication is strictly confidential. This information has been obtained from sources believed to be reliable but has not been verified. NO WARRANTY OR REPRESENTATION, EXPRESS OR IMPLIED, IS MADE AS TO THE CONDITION OF THE PROPERTY (OR PROPERTIES) REFERENCED HEREIN OR AS TO THE ACCURACY OR COMPLETENESS OF THE INFORMATION CONTAINED HEREIN, AND SAME IS SUBMITTED SUBJECT TO ERRORS, OMISSIONS, CHANGE OF PRICE, RENTAL OR OTHER CONDITIONS, WITHDRAWAL WITHOUT NOTICE, AND TO ANY SPECIAL LISTING CONDITIONS IMPOSED BY THE PROPERTY OWNER(S). ANY PROJECTIONS, OPINIONS OR ESTIMATES ARE SUBJECT TO UNCERTAINTY AND DO NOT SIGNIFY CURRENT OR FUTURE PROPERTY PERFORMANCE.

**New Construction Street-Level Retail/Resaurant Space / For Lease**

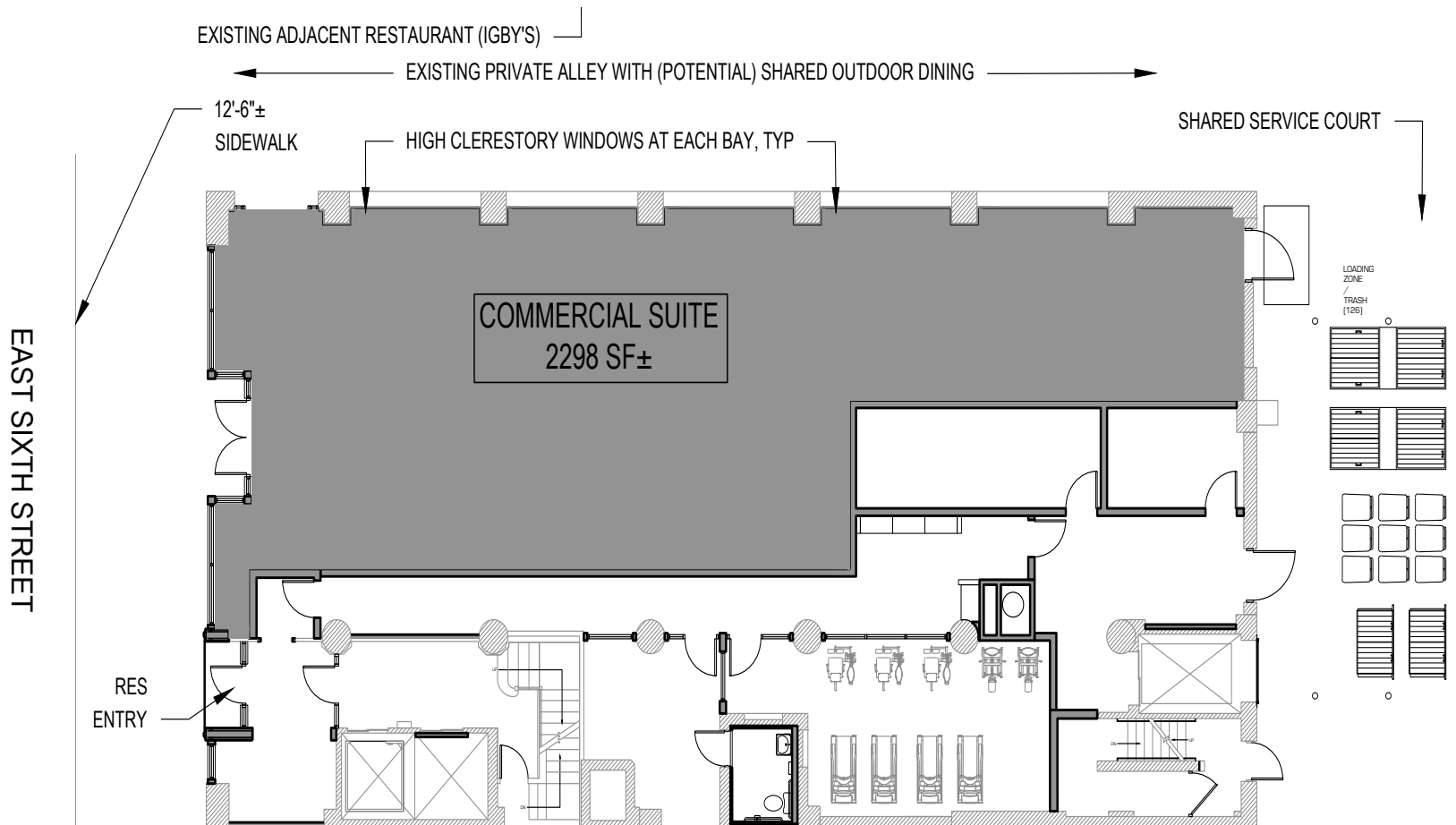


**PROPERTY HIGHLIGHTS**

- Adjacent to Fountain Square, Aronoff Center, Contemporary Arts Center, 21C Museum Hotel and Entertainment District
- Approximately 204,632 employees / 3 mile daytime population
- The Cincinnati Bell Connector Streetcar route at corner of 6th and Main St.



**New Construction Street-Level Retail/Resaurant Space / For Lease**



## New Construction Street-Level Retail/Resaurant Space / For Lease

