



SOUTH VALLEY PLAZA

**SEC E. 10TH STREET
and CHESTNUT DR
GILROY, CA**

**Community Shopping Center at
HWY 101 and Hwy 152 Interchange
Retail Spaces Available**



- Under New Ownership
- Hwy 101 Frontage Center
- Diverse Retail Mix
- Burlington, Harbor Freight Tools, Gilroy DMV and Arteaga's Food Center
- Across from Pacheco Pass Retail: Costco, Target, Best Buy and Walmart
- High Traffic Area of Gilroy
- \$2.35 PSF, NNN

3 Units Available: 2,000± SF, 2,550± SF, and 1,156± SF with Attached Yard Area

ESTIMATED DEMOGRAPHICS

	<u>1 MILE</u>	<u>3 MILES</u>	<u>5 MILES</u>
POPULATION:	13,968	50,793	64,045
AVG. HH INCOME:	\$73,490	\$93,030	\$106,669

FOR MORE INFORMATION CONTACT:

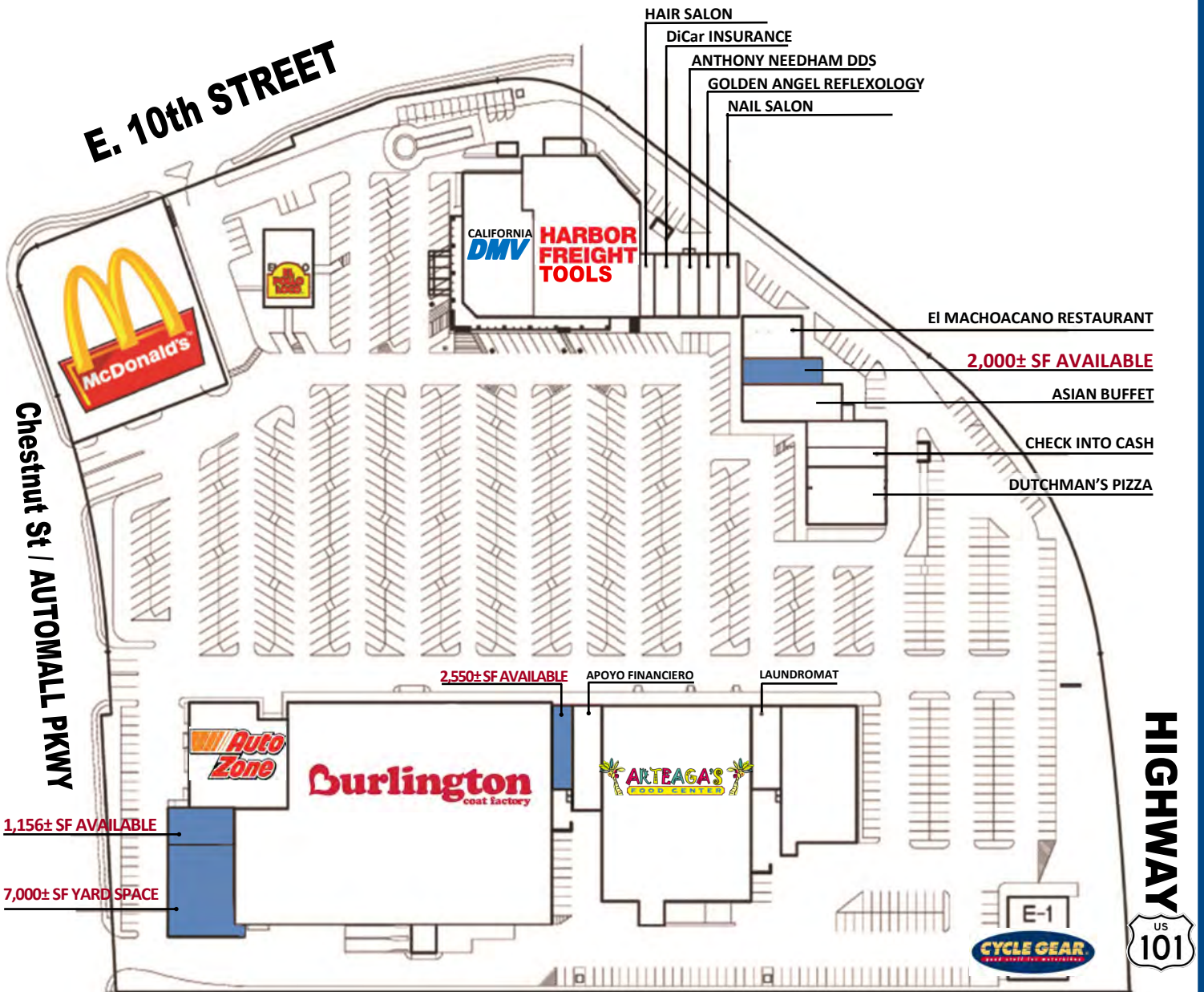
MEACHAM/OPPENHEIMER, INC.
CORFAC INTERNATIONAL
8 No. San Pedro St., Suite 300
San Jose, California 95110
Tel: 408.378.5900
Fax: 408.378.5903
www.moinc.net

Josh Gispan
Lic. #00974978
JGispan@moinc.net
(408) 477-2511

David Taxin
Lic. #00983163
dtaxin@moinc.net
(408) 477-2508

SOUTH VALLEY PLAZA • E. 10th St. • Gilroy, California

SITE PLAN



MEACHAM/OPPENHEIMER, INC.
CORFAC INTERNATIONAL
8 No. San Pedro St., Suite 300
San Jose, California 95110
Tel: 408.378.5900
www.moinc.net

Josh Gispan
Lic. #00974978
JGispan@moinc.net
(408) 477-2511t

David Taxin
Lic. #00983163
dtaxin@moinc.net
(408) 477-2508

SOUTH VALLEY PLAZA • E. 10th St. • Gilroy, California



MEACHAM/OPPENHEIMER, INC.
CORFAC INTERNATIONAL
8 No. San Pedro St., Suite 300
San Jose, California 95110
Tel: 408.378.5900
www.moinc.net

Josh Gispan
Lic. #00974978
JGispan@moinc.net
(408) 477-2511

David Taxin
Lic. #00983163
dtaxin@moinc.net
(408) 477-2508

SOUTH VALLEY PLAZA • E. 10th St. • Gilroy, California



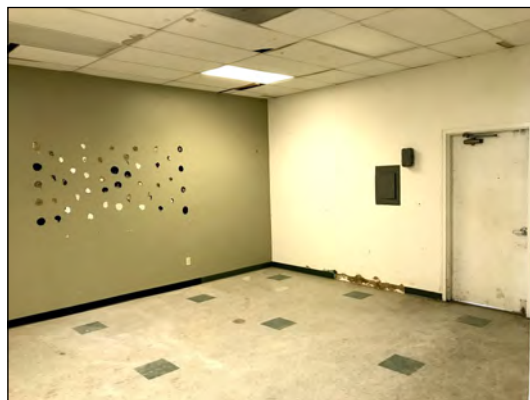
MEACHAM/OPPENHEIMER, INC.
CORFAC INTERNATIONAL
8 No. San Pedro St., Suite 300
San Jose, California 95110
Tel: 408.378.5900
www.moinc.net

Josh Gispan
Lic. #00974978
JGispan@moinc.net
(408) 477-2511

David Taxin
Lic. #00983163
dtaxin@moinc.net
(408) 477-2508

SOUTH VALLEY PLAZA • E. 10th St. • Gilroy, California

Unit 6964: 2,000± SF



ENTRANCE



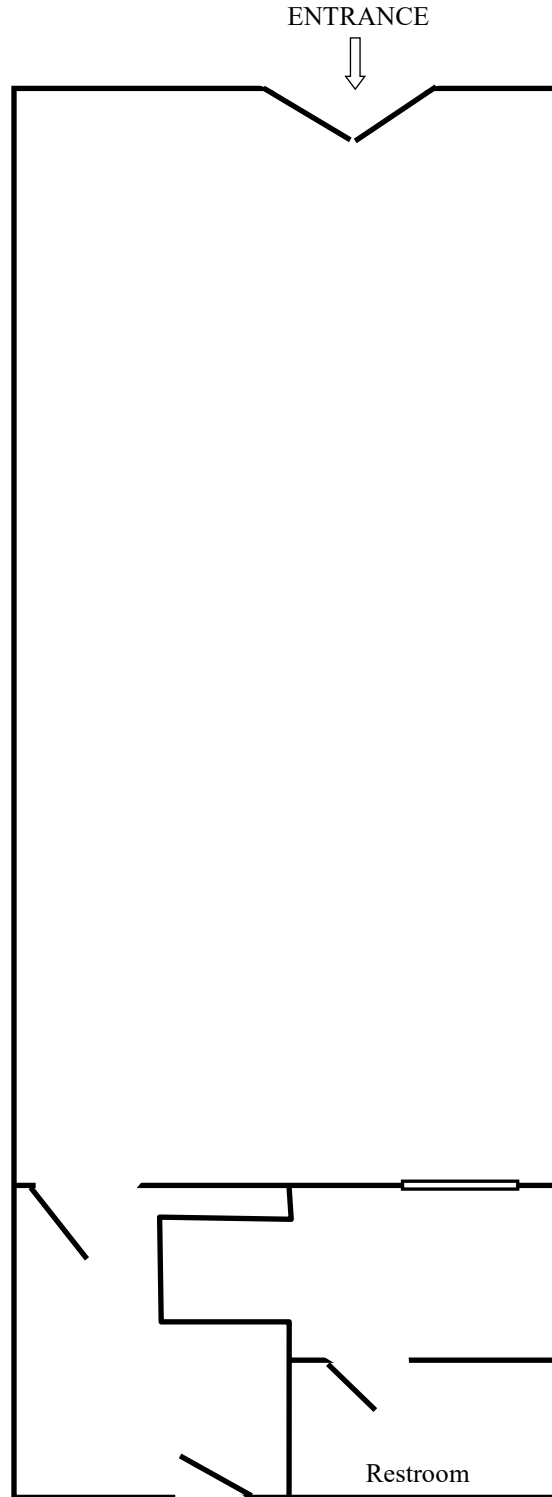
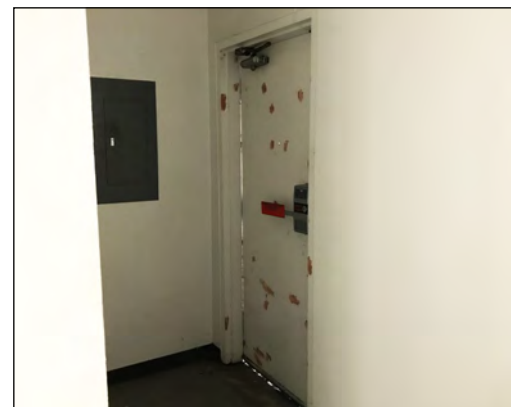
MEACHAM/OPPENHEIMER, INC.
CORFAC INTERNATIONAL
8 No. San Pedro St., Suite 300
San Jose, California 95110
Tel: 408.378.5900
www.moinc.net

Josh Gispan
Lic. #00974978
JGispan@moinc.net
(408) 477-2511

David Taxin
Lic. #00983163
dtaxin@moinc.net
(408) 477-2508

SOUTH VALLEY PLAZA • E. 10th St. • Gilroy, California

Unit 6904: 2,550± SF



MEACHAM/OPPENHEIMER, INC.
CORFAC INTERNATIONAL
8 No. San Pedro St., Suite 300
San Jose, California 95110
Tel: 408.378.5900
www.moinc.net

Josh Gispan
Lic. #00974978
JGispan@moinc.net
(408) 477-2511t

David Taxin
Lic. #00983163
dtaxin@moinc.net
(408) 477-2508