

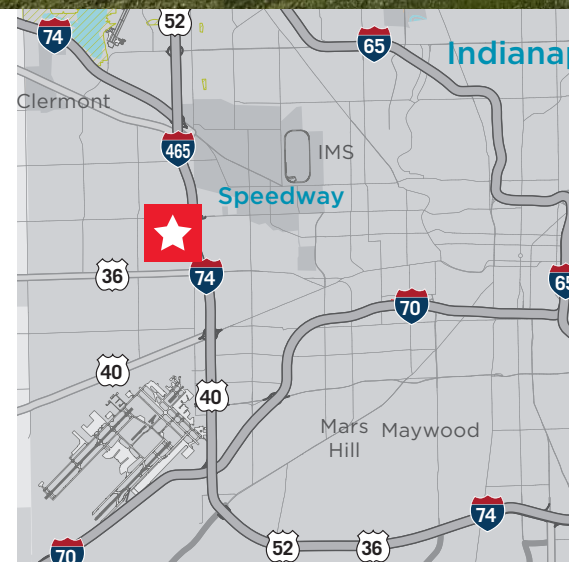


Property Highlights

- Gross Building Area: 38,687 SF
- Year Built: 1975
- Township: Wayne Township
- Zoning: C1
- Parcel No: 9047411 - 9008869
- Land: 7.86 Acres
- 2016 Annual Real Estate Taxes: \$112,116.14 (\$2.90/SF)
- Parking: ± 175 Parking Stalls
- Generator: Cummins/Onan Model DSGAD 175kW Generator with 125 gallon fuel base
- Sale price: \$2,100,000

Michael R. Semler, SIOR
Executive Director
Direct +1 317 639 0433
mike.semmler@cushwake.com

Joshua Graham
Associate
Direct +1 317 639 0491
joshua.graham@cushwake.com



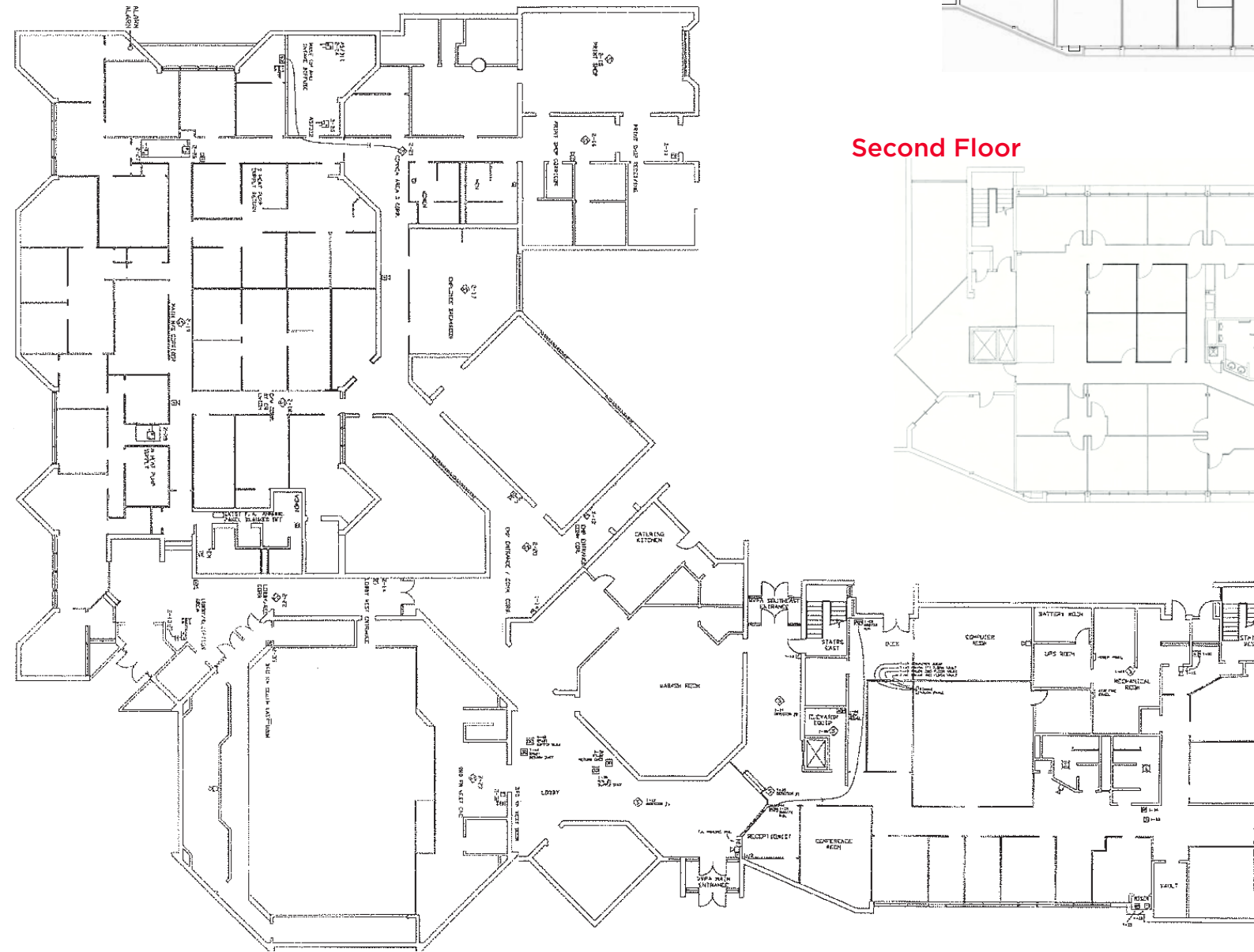
One American Square, Suite 1800
Indianapolis, IN 46282 | USA
Main +1 317 634 6363
Fax +1 317 639 0504
cushmanwakefield.com

FOR SALE

720 - 722 High School Road
Indianapolis, IN 46214



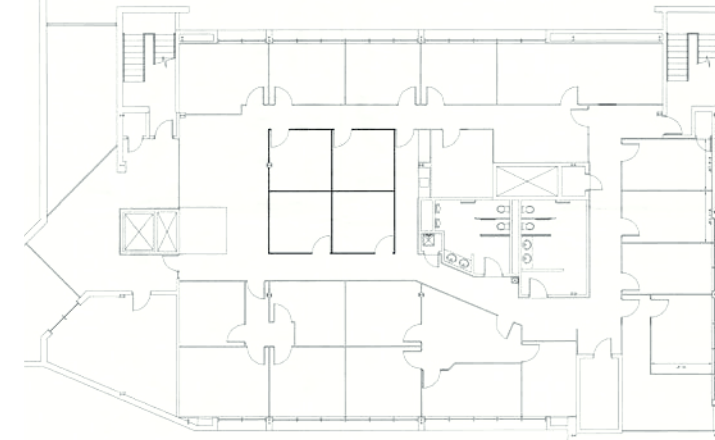
First Floor



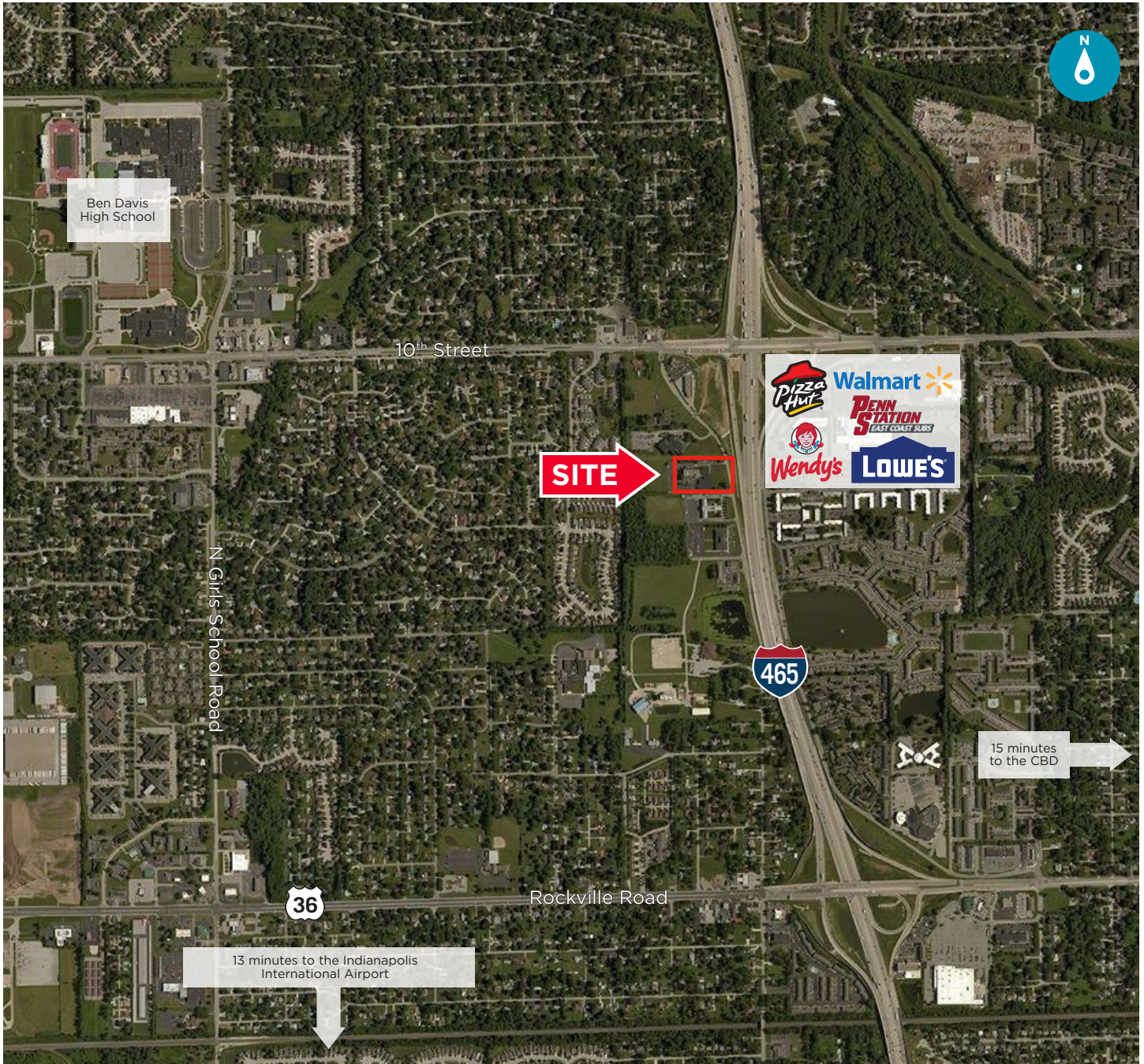
Third Floor



Second Floor



Aerial



Michael R. Semler, SIOR
Executive Director
Direct +1 317 639 0433
mike.semmler@cushwake.com

Joshua Graham
Associate
Direct +1 317 639 0491
joshua.graham@cushwake.com

One American Square, Suite 1800
Indianapolis, IN 46282 | USA
Main +1 317 634 6363
Fax +1 317 639 0504
cushmanwakefield.com