



## ONE POST STREET SUBLEASE

70,000 RSF  
LARGE BLOCK OPPORTUNITY  
TERM TO FEB 2027  
CREDIT SUBLESSOR

NEW HIGH QUALITY SPACE  
OUTSTANDING VIEWS  
READY TO OCCUPY  
EXCELLENT LOCATION  
NEW LOBBY AND RETAIL EXPERIENCE

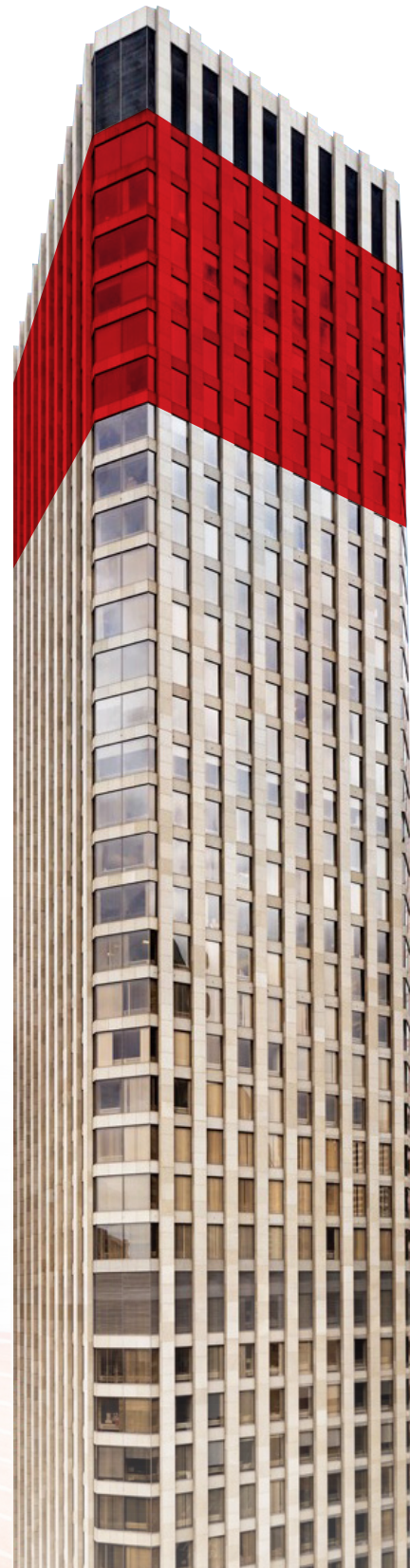


# 6

## CONTIGUOUS VIEW FLOORS

32 <sup>nd</sup> Floor	11,809 RSF
33 <sup>rd</sup> Floor	11,772 RSF
34 <sup>th</sup> Floor	11,772 RSF
35 <sup>th</sup> Floor	11,772 RSF
36 <sup>th</sup> Floor	11,772 RSF
37 <sup>th</sup> Floor	11,772 RSF
Total	70,669 RSF

Potential up to 110,000 RSF  
available in building



# ONE POST - SUBLEASE



Panoramic city  
& Bay views



70,669 RSF  
available,  
additional space  
up to  
110,000 RSF



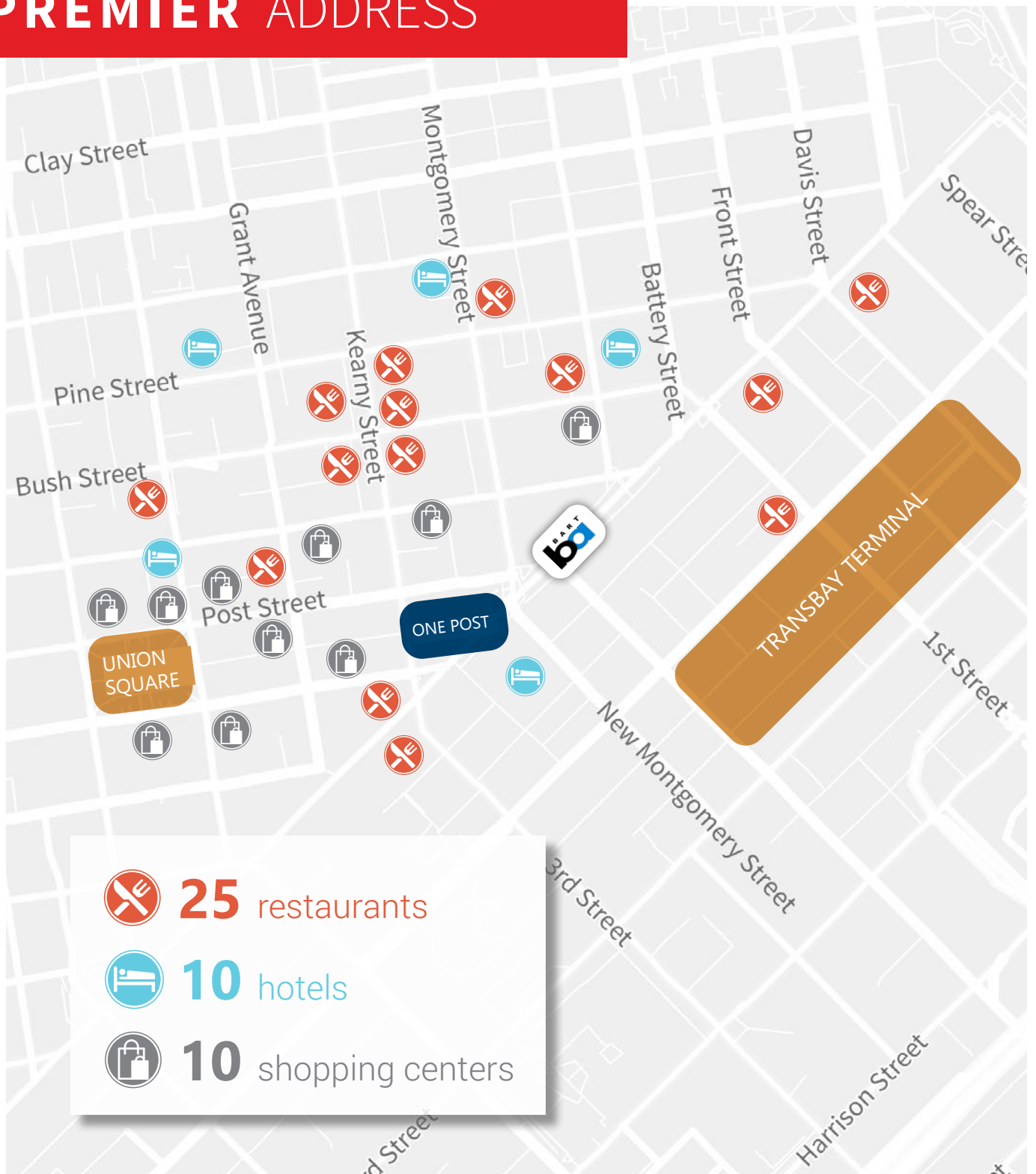
High quality  
professional office  
space






YOUR NEXT CHAPTER  
**STARTS HERE**



# ONE POST - SUBLEASE **PREMIER** ADDRESS



-  **25** restaurants
-  **10** hotels
-  **10** shopping centers



Direct Access  
To Mass Transit



1 Min Walk  
To BART



7 Min Walk To  
Ferry Building



2 Blocks From  
Union Square



# ONE POST - SUBLEASE

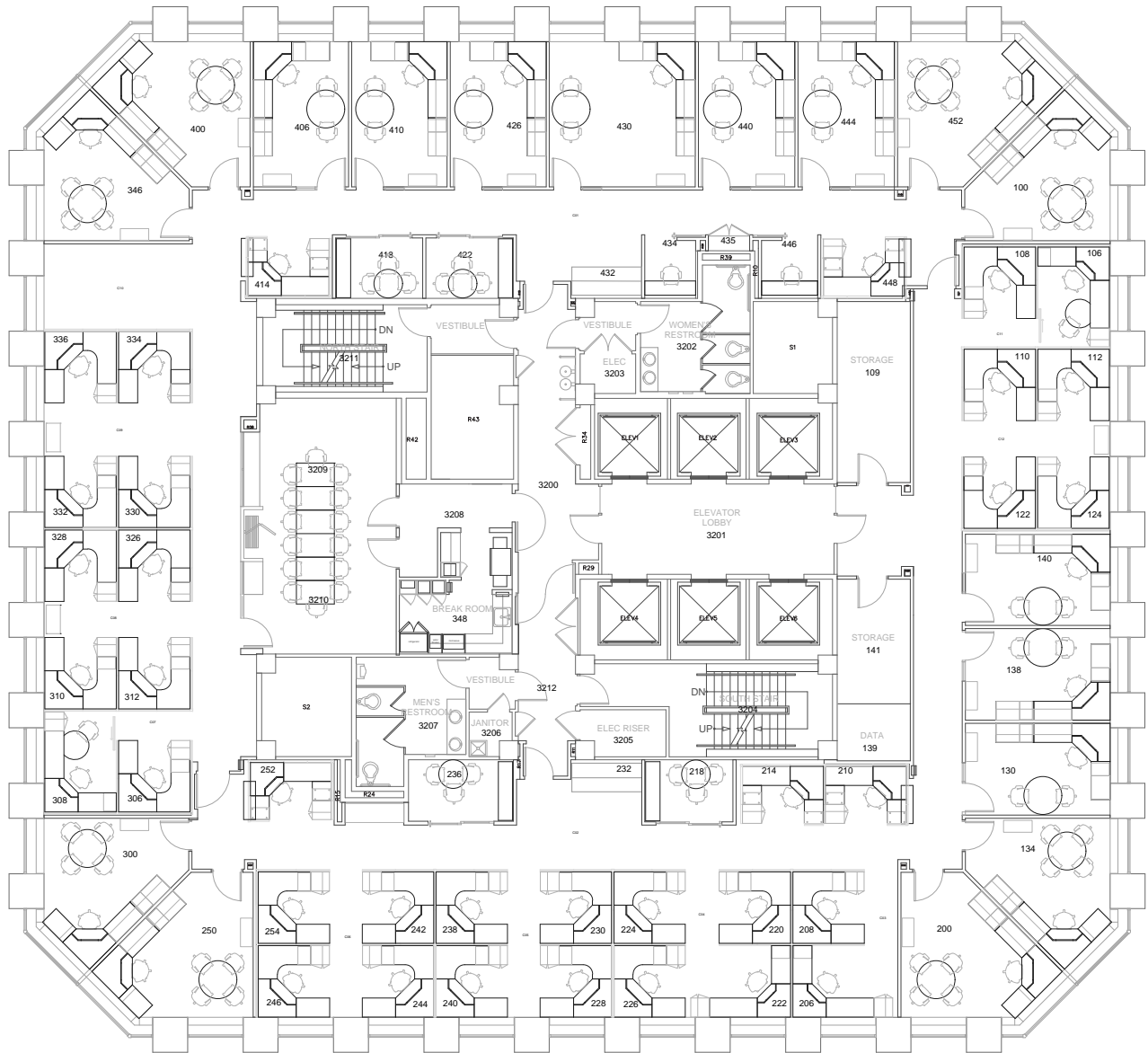


# PHOTOS OF AVAILABLE SPACES



# 32 FLOOR

## ONE POST - SUBLEASE FLOOR PLANS



**11,809 RSF**

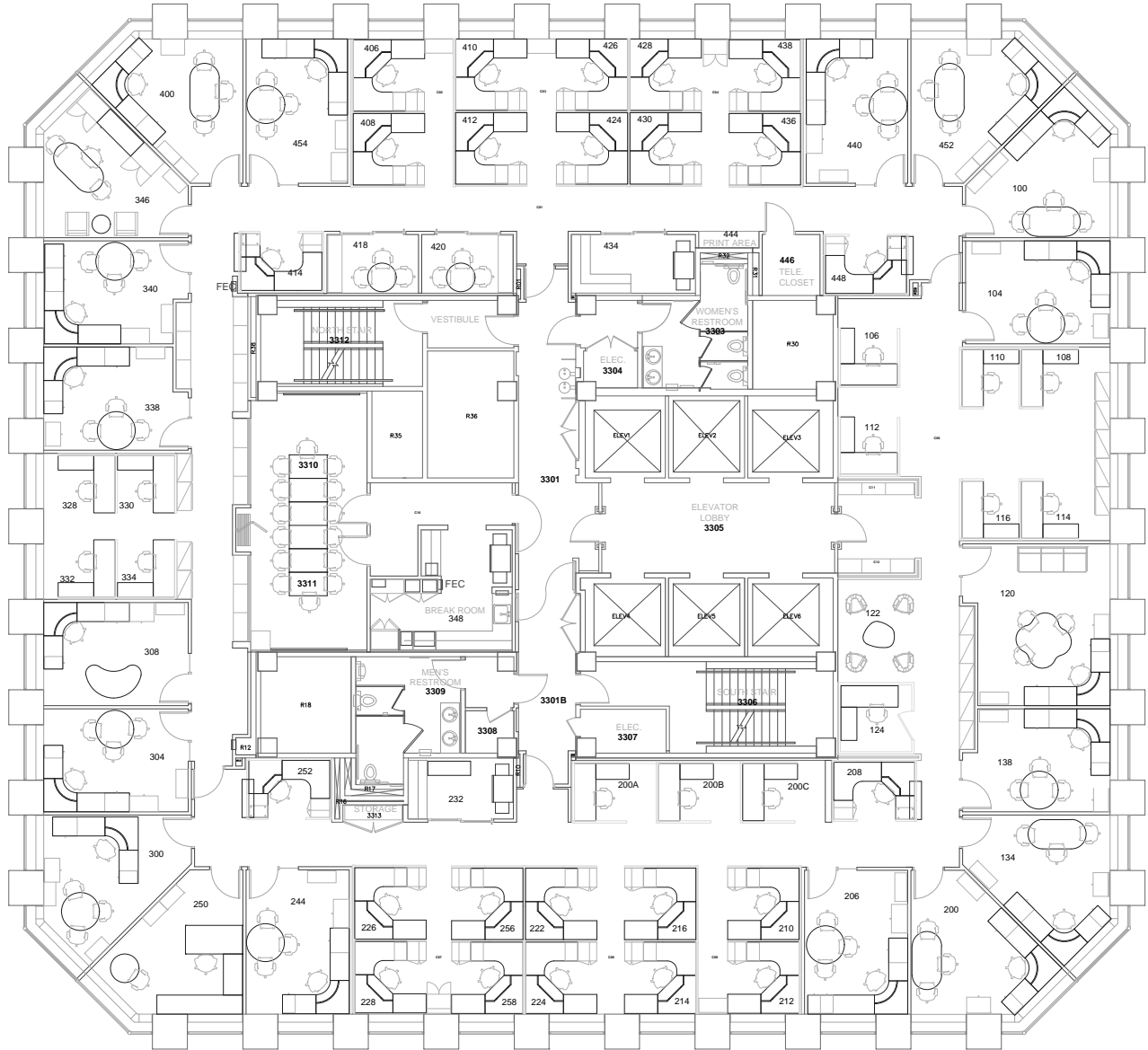
**WES POWELL**  
415.395.4901  
wes.powell@am.jll.com  
License 01702003

**ANDY KOENIG**  
415.395.4985  
andy.koenig@am.jll.com  
License 01315392



ONE POST - SUBLEASE  
FLOOR PLANS

33  
FLOOR



**11,772 RSF**

**WES POWELL**  
415.395.4901  
wes.powell@am.jll.com  
License 01702003

**ANDY KOENIG**  
415.395.4985  
andy.koenig@am.jll.com  
License 01315392



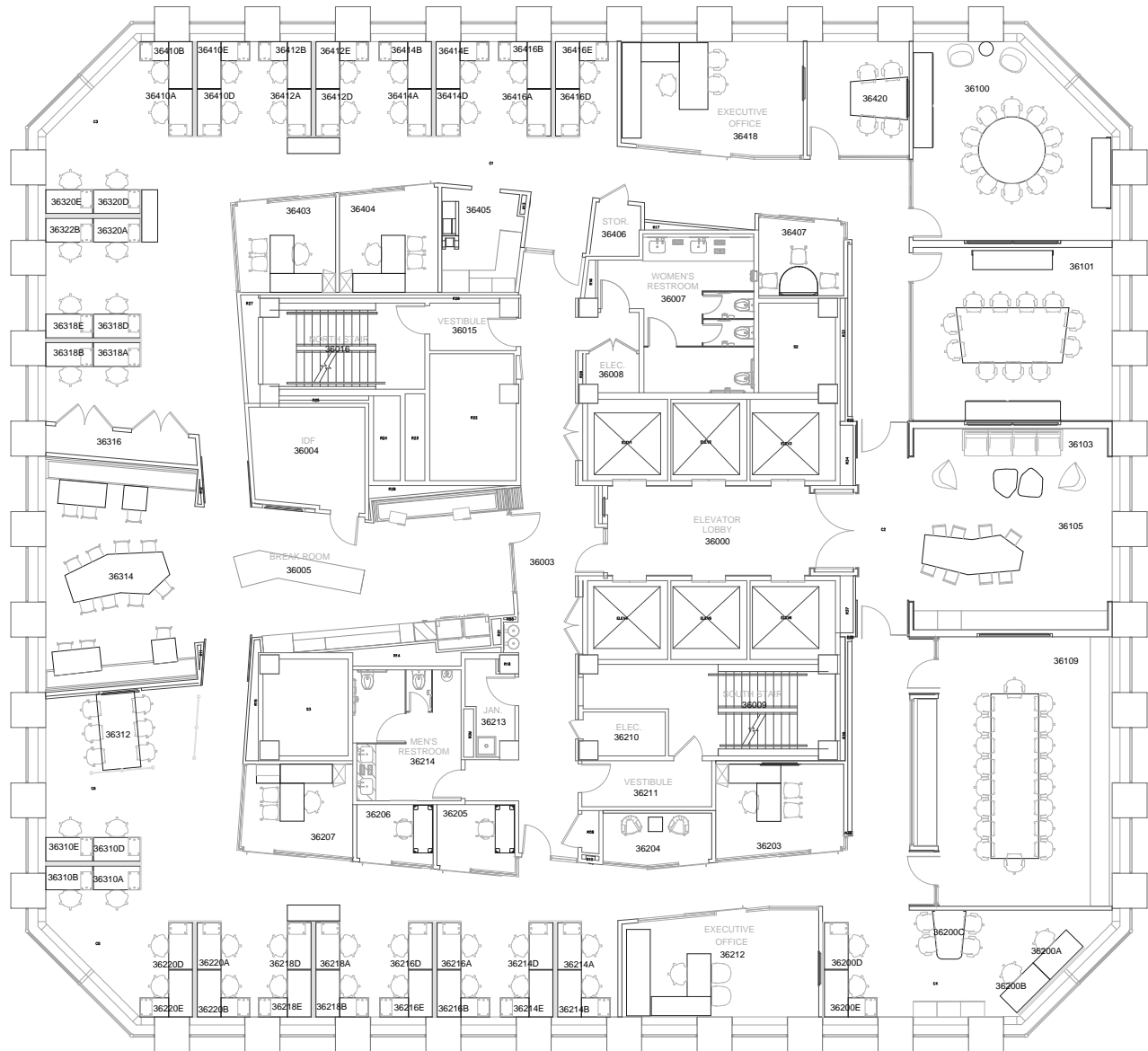






# 36 FLOOR

## ONE POST - SUBLEASE FLOOR PLANS



**11,772 RSF**

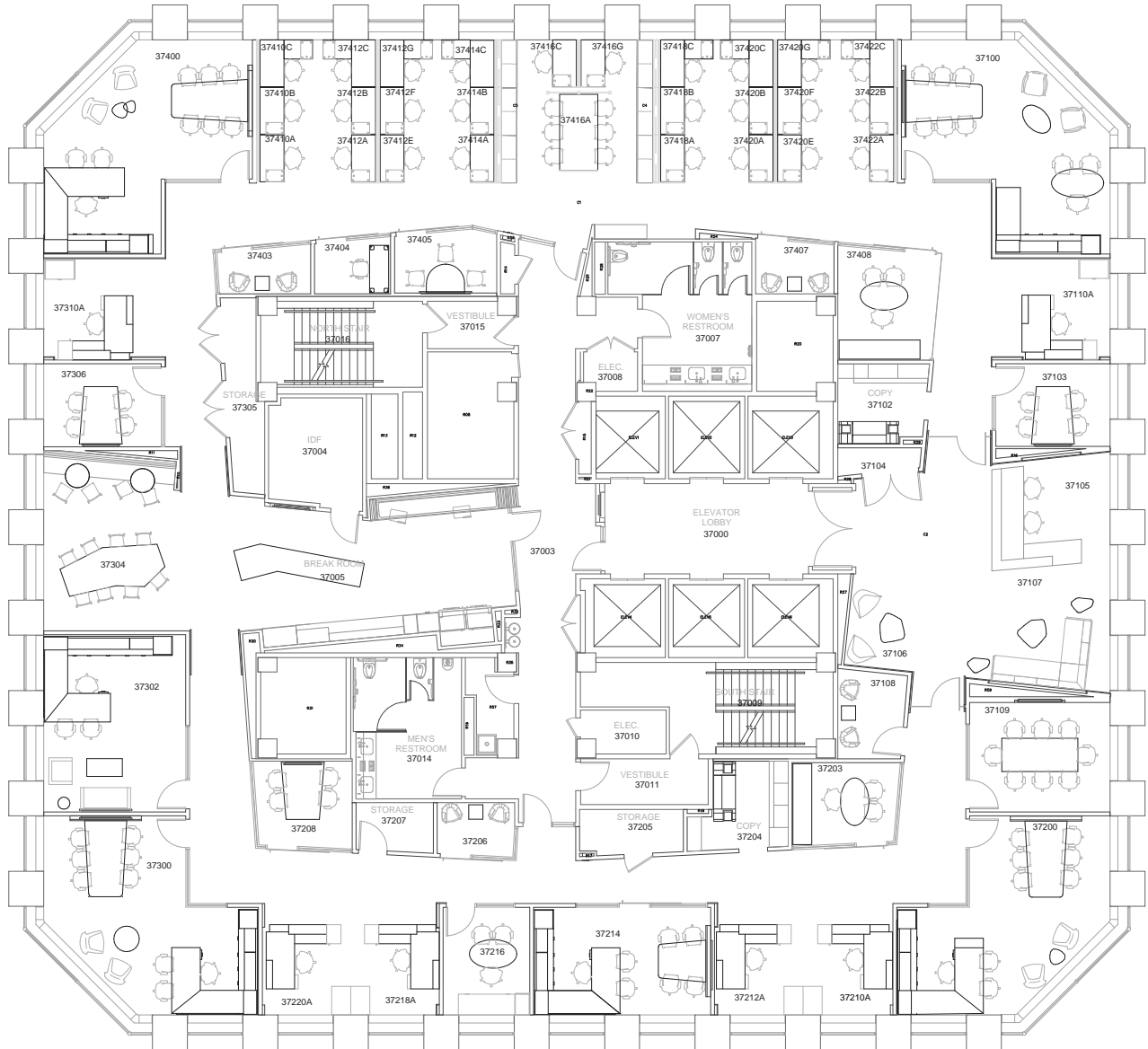
**WES POWELL**  
415.395.4901  
wes.powell@am.jll.com  
License 01702003

**ANDY KOENIG**  
415.395.4985  
andy.koenig@am.jll.com  
License 01315392



# ONE POST - SUBLEASE FLOOR PLANS

# 37 FLOOR



**11,772 RSF**

**WES POWELL**  
415.395.4901  
wes.powell@am.jll.com  
License 01702003

**ANDY KOENIG**  
415.395.4985  
andy.koenig@am.jll.com  
License 01315392



ONE POST - SUBLEASE

LEASING TEAM



**WES POWELL**

415.395.4901  
wes.powell@am.jll.com  
License 01702003

**ANDY KOENIG**

415.395.4985  
andy.koenig@am.jll.com  
License 01315392

