

MIDTOWN
SOUTH

NEW YORK
NY

455 PARK AVENUE SOUTH



SPACE DETAILS

LOCATION

East block between East 30th and 31st Streets

APPROXIMATE SIZE

Ground Floor	1,230 SF
Lower Level	670 SF
Total	1,900 SF

POSSESSION

Immediate

TERM

Negotiable

FRONTAGE

15 FT on Park Avenue South

SITE STATUS

Formerly Ikinari Steak

NEIGHBORS

Cleo, Vezzo Thin Crust, Chipotle Mexican Grill, Bread & Butter, Lenwich, Fresh & Co, Starbucks and Pret A Manger

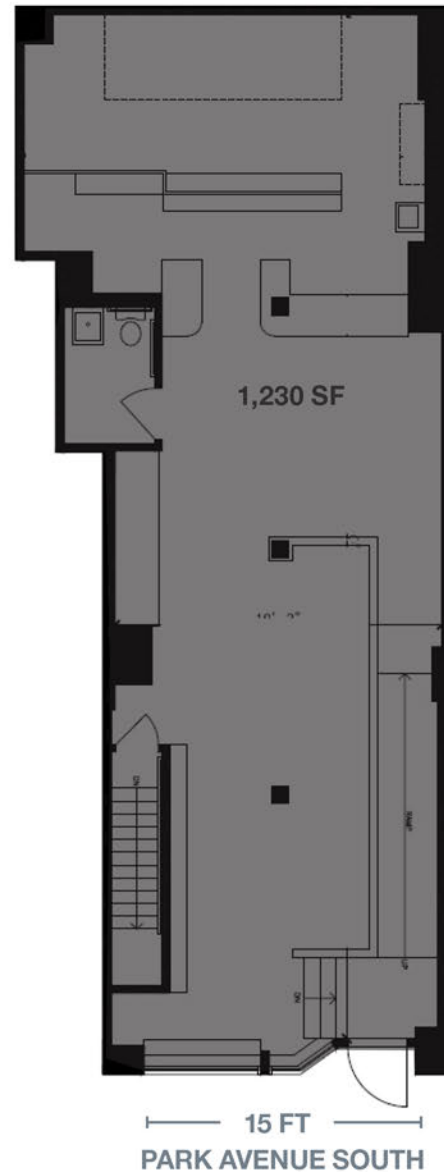
COMMENTS

Space is in turnkey condition

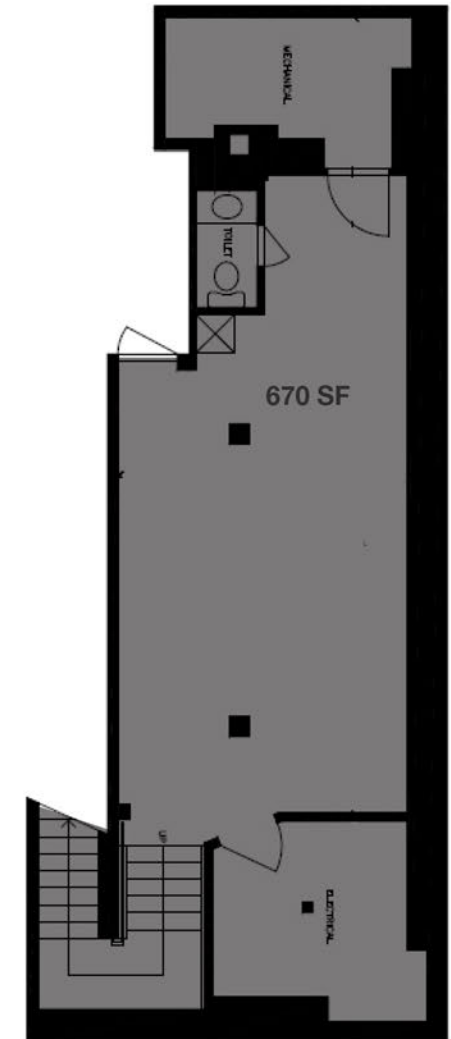
New kitchen installation on Ground Floor and walk-in refrigerator in the Lower Level

Two blocks South of the **6** train

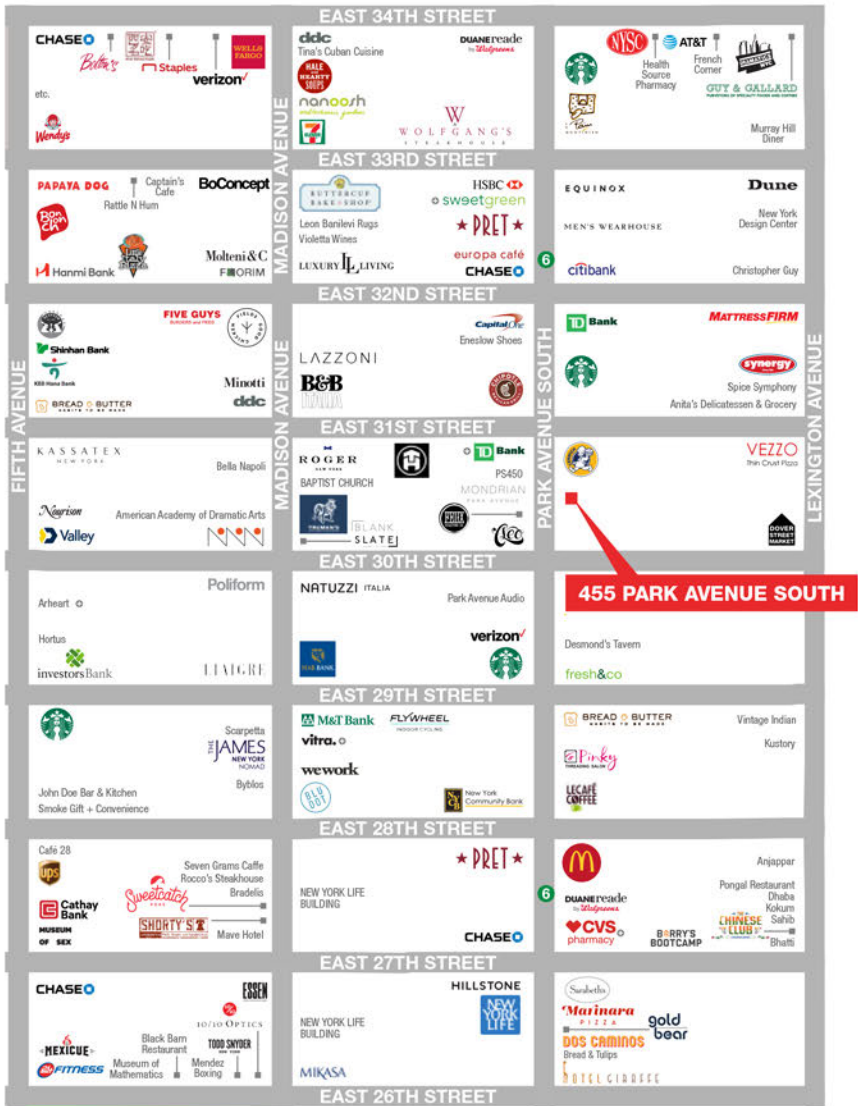
GROUND FLOOR



LOWER LEVEL



AREA RETAIL



⊕ COMING SOON

CONTACT EXCLUSIVE AGENTS

ALEXANDER ARSENIS
 212.309.2820
 alexander.arsenis@ngkf.com

JOSHUA STRAUSS
 212.331.0126
 joshua.strauss@ngkf.com



NGKF.COM

© 2019 NEWMARK KNIGHT FRANK RETAIL. The information contained herein has been obtained from sources deemed reliable but has not been verified and no guarantee, warranty or representation, either express or implied, is made with respect to such information. Terms of sale or lease and availability are subject to change or withdrawal without notice.