

# FOR LEASE

1414 Sheepshead Bay Road, Brooklyn, NY



**MITZI FLEXER / [mitzi.flexer@cushwake.com](mailto:mitzi.flexer@cushwake.com) / 718 307 6504**  
**ADAM MALITZ / [adam.malitz@cushwake.com](mailto:adam.malitz@cushwake.com) / 718 606 7045**

WHAT'S NEXT IN RETAIL  
[WWW.CUSHWAKERETAIL.COM](http://WWW.CUSHWAKERETAIL.COM)



©2018 Cushman & Wakefield. All rights reserved. The material in this presentation has been prepared solely for information purposes, and is strictly confidential. Any disclosure, use, copying or circulation of this presentation (or the information contained within it) is strictly prohibited, unless you have obtained Cushman & Wakefield's prior written consent. The views expressed in this presentation are the views of the author and do not necessarily reflect the views of Cushman & Wakefield. Neither this presentation nor any part of it shall form the basis of, or be relied upon in connection with any offer, or act as an inducement to enter into any contract or commitment whatsoever. NO REPRESENTATION OR WARRANTY IS GIVEN, EXPRESS OR IMPLIED, AS TO THE ACCURACY OF THE INFORMATION CONTAINED WITHIN THIS PRESENTATION, AND CUSHMAN & WAKEFIELD IS UNDER NO OBLIGATION TO SUBSEQUENTLY CORRECT IT IN THE EVENT OF ERRORS.

# FOR LEASE

1414 Sheepshead Bay Road, Brooklyn, NY

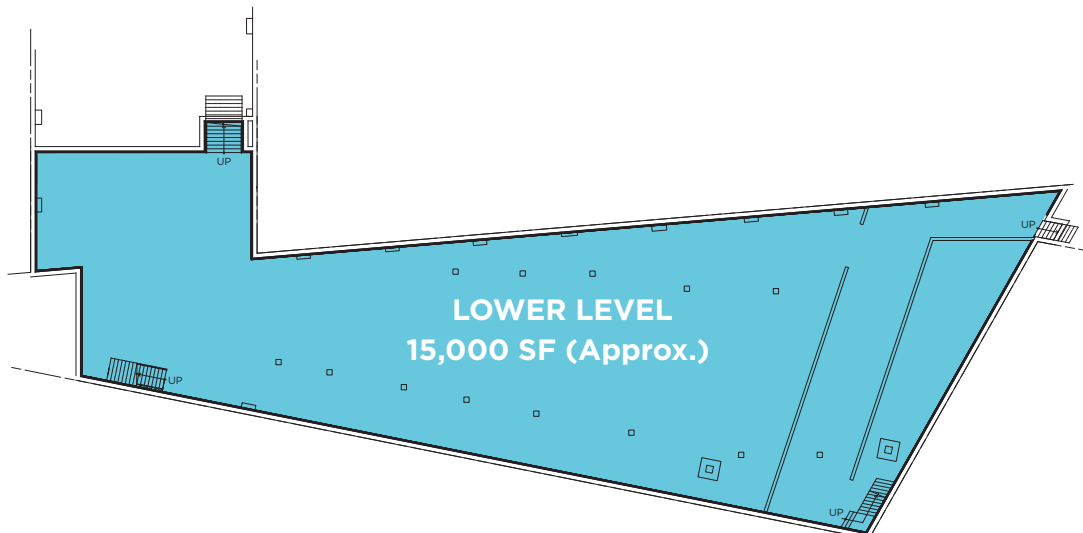
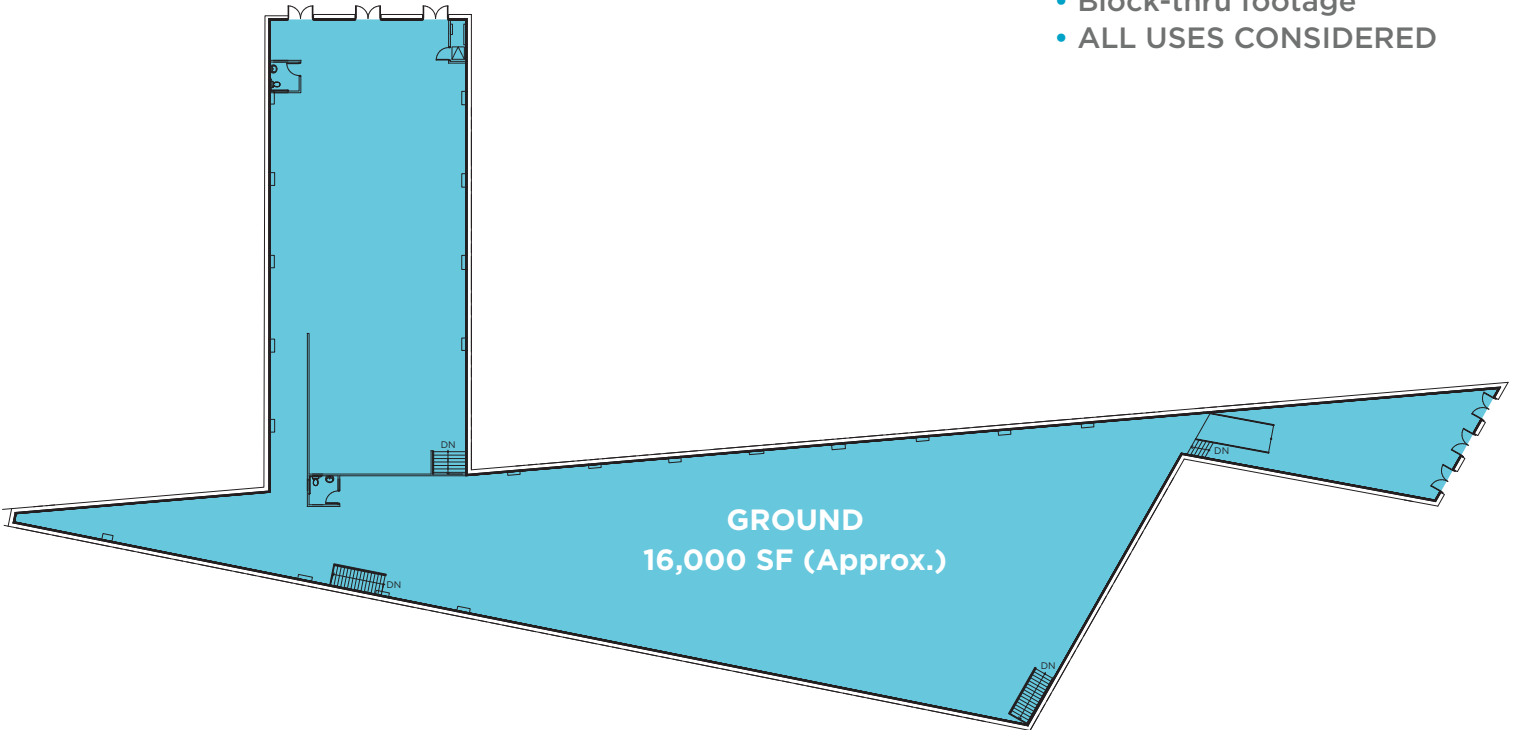
## RETAIL SPACE:

Ground: **16,000 SF (Approx.)**

Lower Level: **15,000 SF (Approx.)**

## COMMENTS:

- Divisions considered
- HVAC in place
- High ceilings
- Block-thru footage
- ALL USES CONSIDERED



MITZI FLEXER / [mitzi.flexer@cushwake.com](mailto:mitzi.flexer@cushwake.com) / 718 307 6504  
ADAM MALITZ / [adam.malitz@cushwake.com](mailto:adam.malitz@cushwake.com) / 718 606 7045



# FOR LEASE

1414 Sheepshead Bay Road, Brooklyn, NY



MITZI FLEXER / [mitzi.flexer@cushwake.com](mailto:mitzi.flexer@cushwake.com) / 718 307 6504  
ADAM MALITZ / [adam.malitz@cushwake.com](mailto:adam.malitz@cushwake.com) / 718 606 7045



CUSHMAN & WAKEFIELD