

FOR LEASE

1060 Stuyvesant Avenue, Union

RETAIL

NOW AVAILABLE



PROPERTY INFO

- **Availability:** 8,061 sq. ft. End Cap
- **Gross Building Area:** 15,196 sq. ft.
- **Frontage:** 163' on Stuyvesant Avenue
- **Parking:** 17 spaces plus street
- **Zoning:** B-2
- **Building Renovated:** 2010
- **Taxes (2019)+ CAM:** \$7.77 PSF
- **Lease Rate:** Call for quote

Notes:

- Co-tenants include American Shave Barber Shop, Union Wine & Liquor & World Taekwondo of Union
- Close proximities to Morris Avenue, Garden State Parkway, Route 22 and I-78

2019 DEMOGRAPHICS

	1 Mile	3 Miles	5 Miles
Population	20,660	231,069	630,738
Daytime Population	17,976	198,409	556,081
Households	6,807	81,151	222,175
Median Household Income	\$90,740	75,077	61,970



1060 Stuyvesant Avenue, Union, NJ

www.cbre.us

CBRE

FOR LEASE

1060 Stuyvesant Avenue, Union

RETAIL



1060 Stuyvesant Avenue, Union, NJ

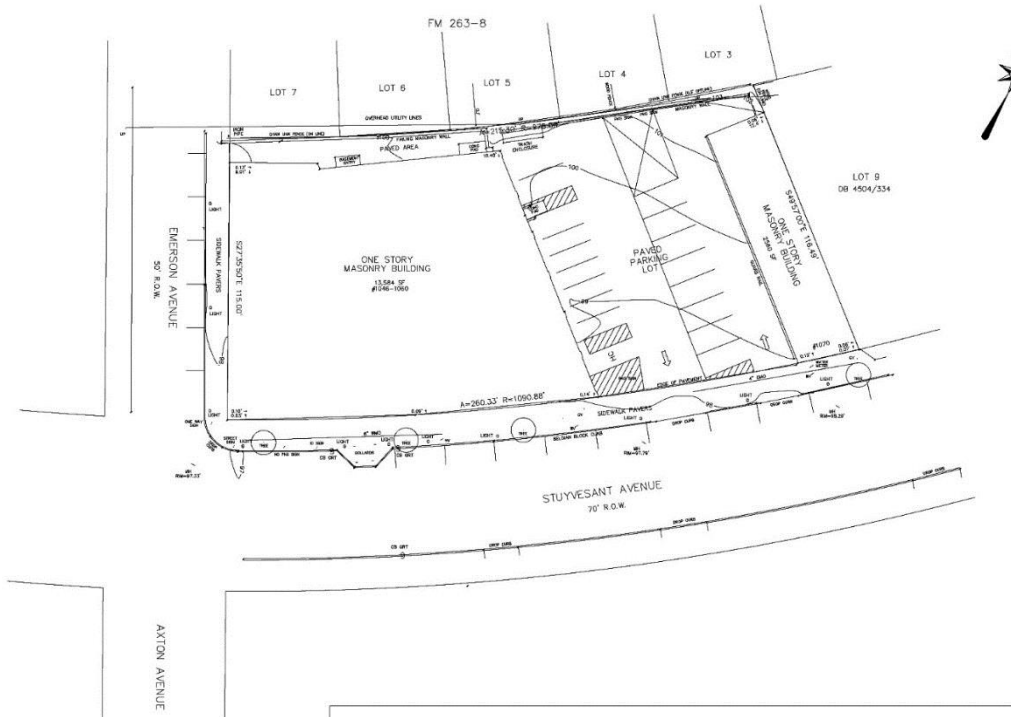
www.cbre.us

CBRE

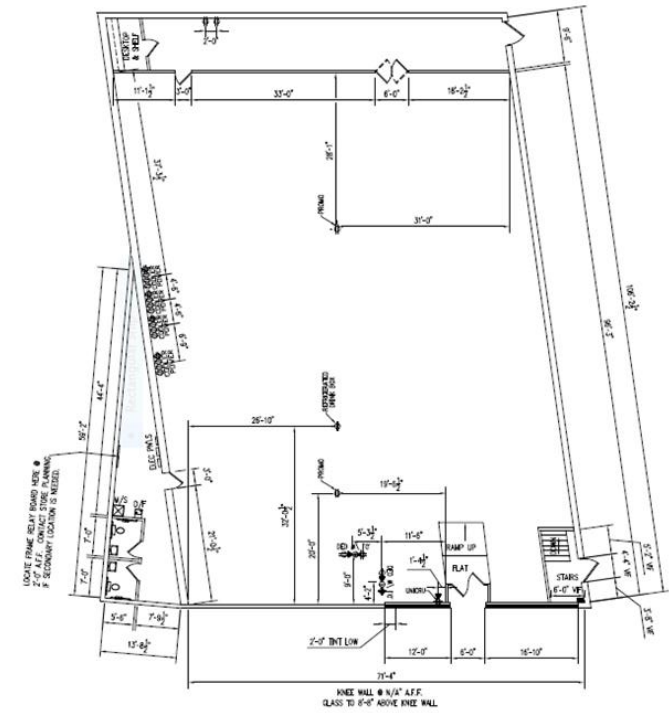
FOR LEASE

1060 Stuyvesant Avenue, Union

RETAIL



SITE PLAN



FLOOR PLAN

FOR LEASE

1060 Stuyvesant Avenue, Union

RETAIL



CONTACT US

SAMUEL BERNHAUT

First Vice President
+1 201 712 5884
samuel.bernhaut@cbre.com

NICOLE NANNOLA

Senior Associate
+1 201 712 5821
nicole.nannola@cbre.com

© 2020 CBRE, Inc. All rights reserved. This information has been obtained from sources believed reliable, but has not been verified for accuracy or completeness. You should conduct a careful, independent investigation of the property and verify all information. Any reliance on this information is solely at your own risk. CBRE and the CBRE logo are service marks of CBRE, Inc. All other marks displayed on this document are the property of their respective owners. Photos herein are the property of their respective owners. Use of these images without the express written consent of the owner is prohibited.

CBRE