

Northern Trust Bank



100 2nd Avenue South
St. Petersburg, FL 33701



DON'T LET THE VIEWS
DISTRACT YOU!



LOCATION
ST. PETERSBURG, FL



PROPERTY SIZE
242,115 RSF



BUILDINGS
2



FLOORS
12, 4



FLOOR PLATE
19,442 RSF



6 STORY
PARKING GARAGE

Welcome to CITY CENTER

City Center offers unmatched views of Tampa Bay and the downtown St. Petersburg skyline with its premiere waterfront location. The office complex features a soaring atrium lobby with a glass ceiling, Class A amenities, and will be undergoing dramatic multi-million dollar renovations.

■ Planned Renovations - 2023

- Waterfront Downtown St. Petersburg Location
- On-site Café that Serves Breakfast and Lunch
- Fitness Center with Showers & Conference Room that Seats 60 People
- Full Time Lobby Concierge and On-site Property Management

Property FEA-



ONSITE
CAFÉ



CONFERENCE
FACILITY



LOBBY
CONCIERGE



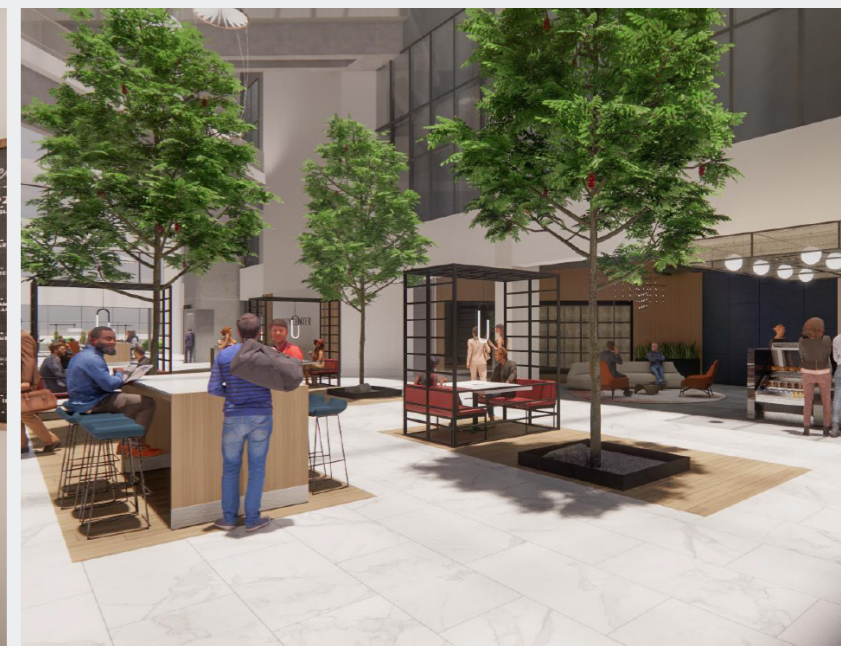
COMMON
AREAS



FITNESS
CENTER



WATERFRONT
LOCATION



Property FEATURES



Property LOCA-



Tampa Bay

AIRPORT

**CITY
CENTER**

**USF
ST. PETE**

2nd Ave S

I-175

N



UNIVERSITY OF
SOUTH FLORIDA
1 MILE



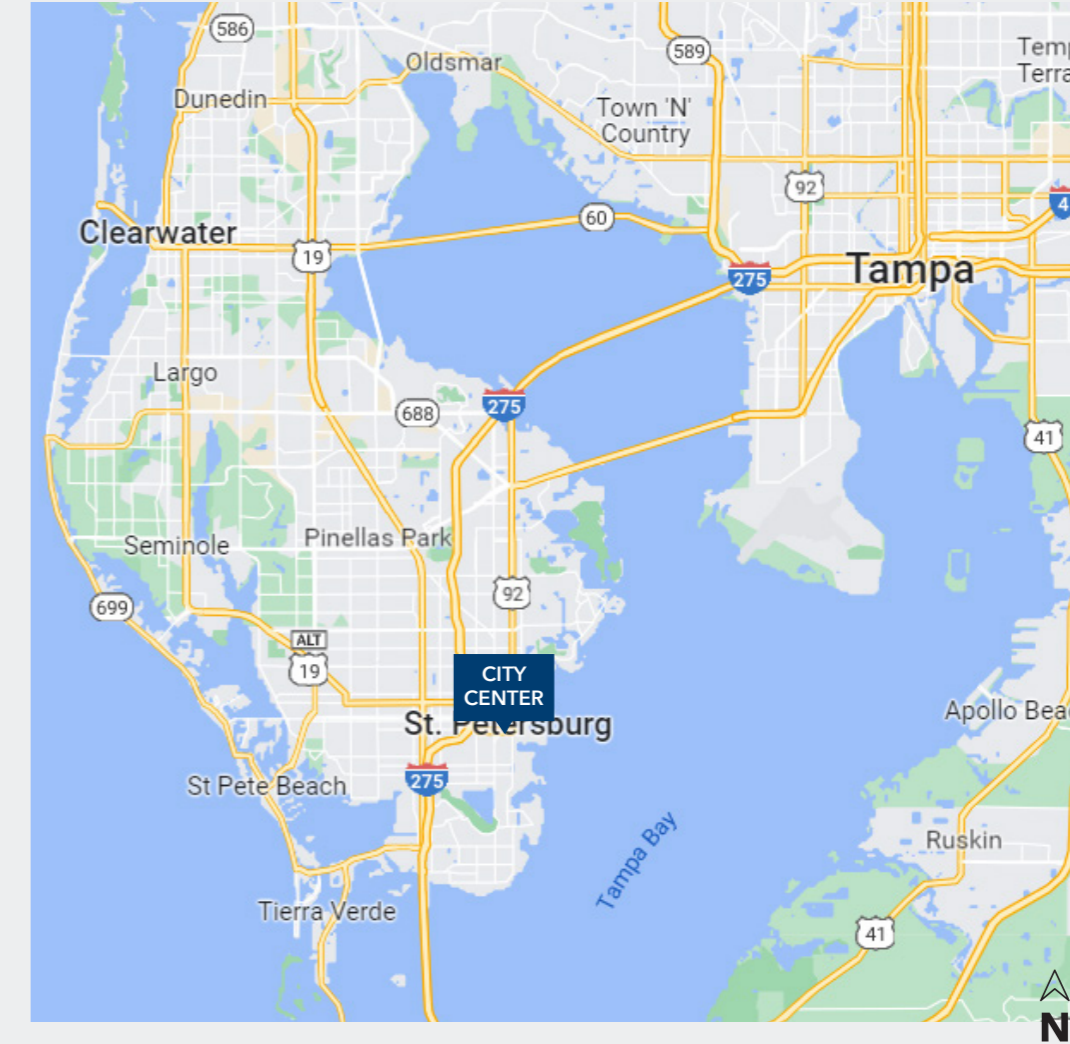
I-275
1 MILE



AL LANG
STADIUM
1 MILE



ALBERT WHITTED
AIRPORT
1 MILE



RESTAURANTS
500+, 5 MILES



HOTELS
100+, 5 MILES



AL LANG STADIUM
TROPICANA FIELD



APARTMENTS
100+, 5 MILES



Location HIGHLIGHTS

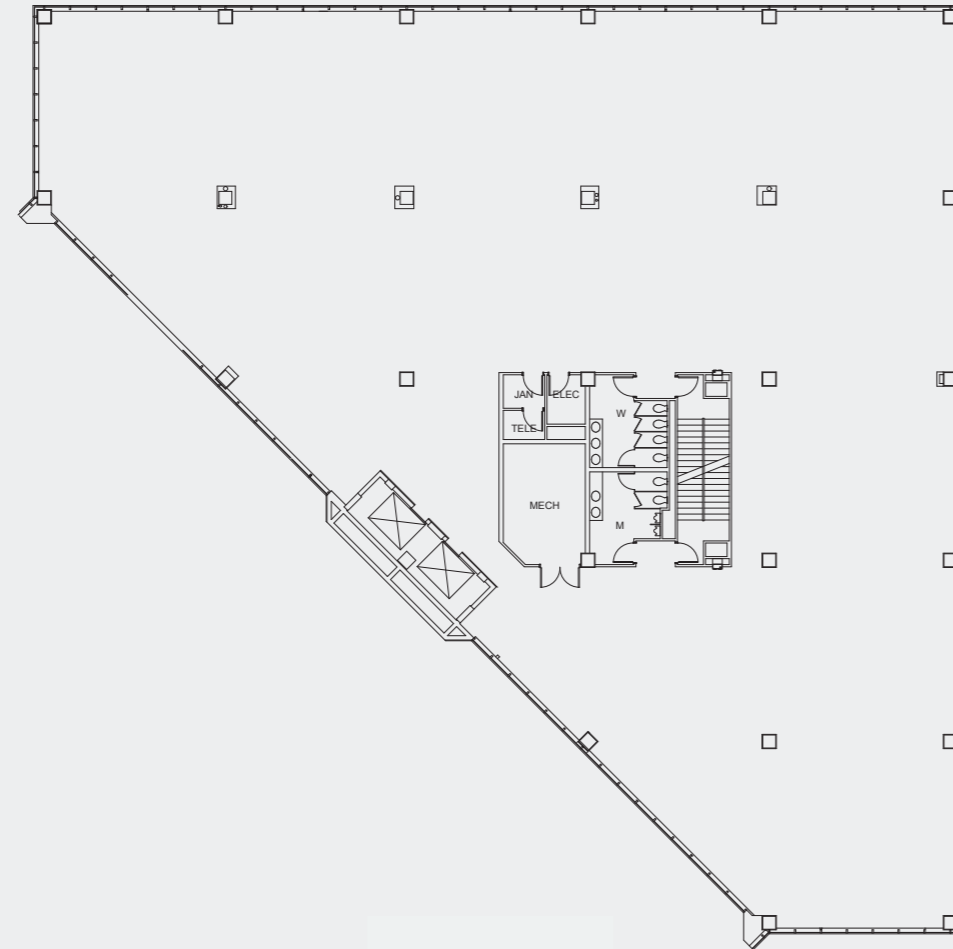
City Center is centrally located in Downtown St. Petersburg, with breathtaking views of Tampa Bay. The area offers a variety of activities and some of the most beautiful waterfronts in the country. Enjoy the sunny weather, bustling art scene and exciting nightlife in St. Petersburg.

Nearby Points Of Interest

- St. Pete Pier
- Al Lang Stadium & Tropicana Field
- Albert Whitted Airport
- Boyd Hill Nature Park & Fort De Soto Park
- Salvador Dali Museum & Museum of Fine Arts
- Mahaffey Theater



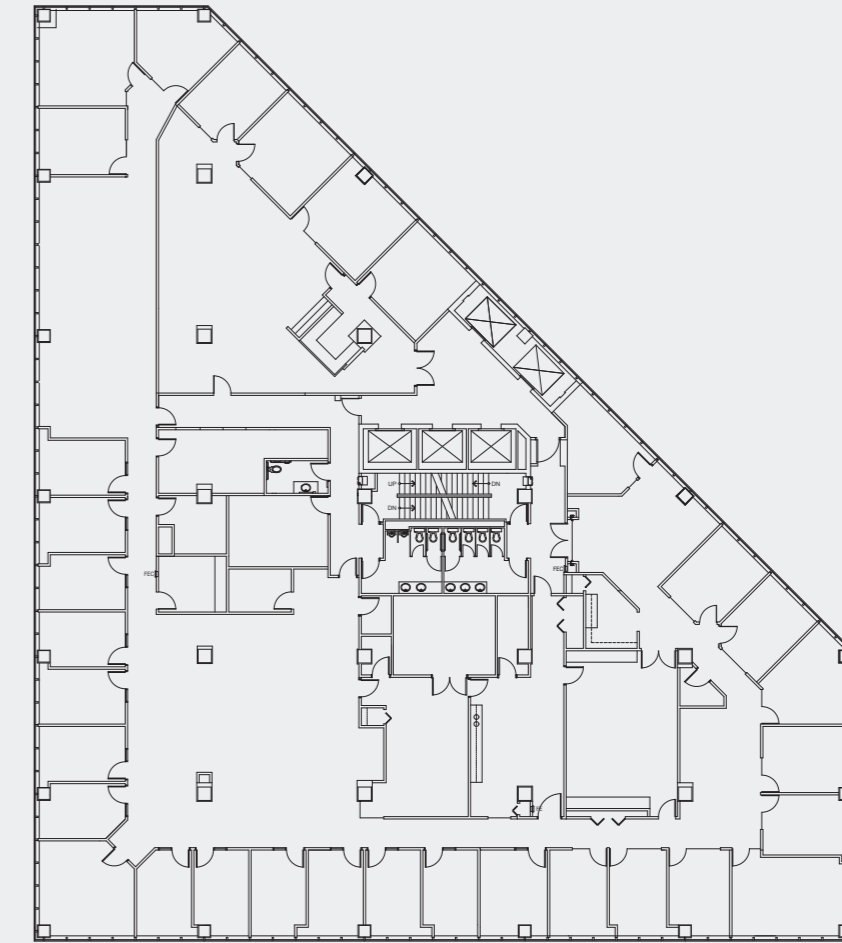
Typical FLOOR



NOT TO SCALE

North TOWER

South TOWER



NOT TO SCALE



DON'T LET THE VIEWS DISTRACT YOU



BAHAREA LARSEN
813.579.3934
blarsen@feldmanequities.com

KELLEY IAQUINTA
kiaquinta@feldmanequities.com

[Click For Available Spaces](#)
[Click For Printable Brochure](#)



© Copyright 2022 | All Rights Reserved

