

# MarketPlace



CONCEPTUAL RENDERING

**NEWMARK**

**FOSUN PROPERTY**  
复星地产



# THE PLAZA

The 60-story office tower sits on a vibrant arts plaza featuring a dynamic Dubuffet sculpture and a peaceful Noguchi rock garden fountain. A true patron of the arts, Fosun celebrates international culture and world class artists with event programming for the community and tenants.



# Located in the heart of Financial District's **TOURISM, TRADE and TRANSPORTATION**

**13.6 million** tourists      **17.4 million** unique visitors      **300,000** daily commuters

**7,000** hotel rooms      **\$8.4 million** in annual spending power      **242,000** employees

**61,000** residents with average household income of **\$218,000**





MarketPlace



RETAIL RENDERINGS

# VIEW AT CEDAR STREET



# LIBERTY STREET ENTRANCE



# PLAZA ENTRANCE



ODYSSEY

MarketPlace

ALAMO  
CHASE  
LEGENDS FOOD HALL  
BOOTCAMP  
pins  
Court 16



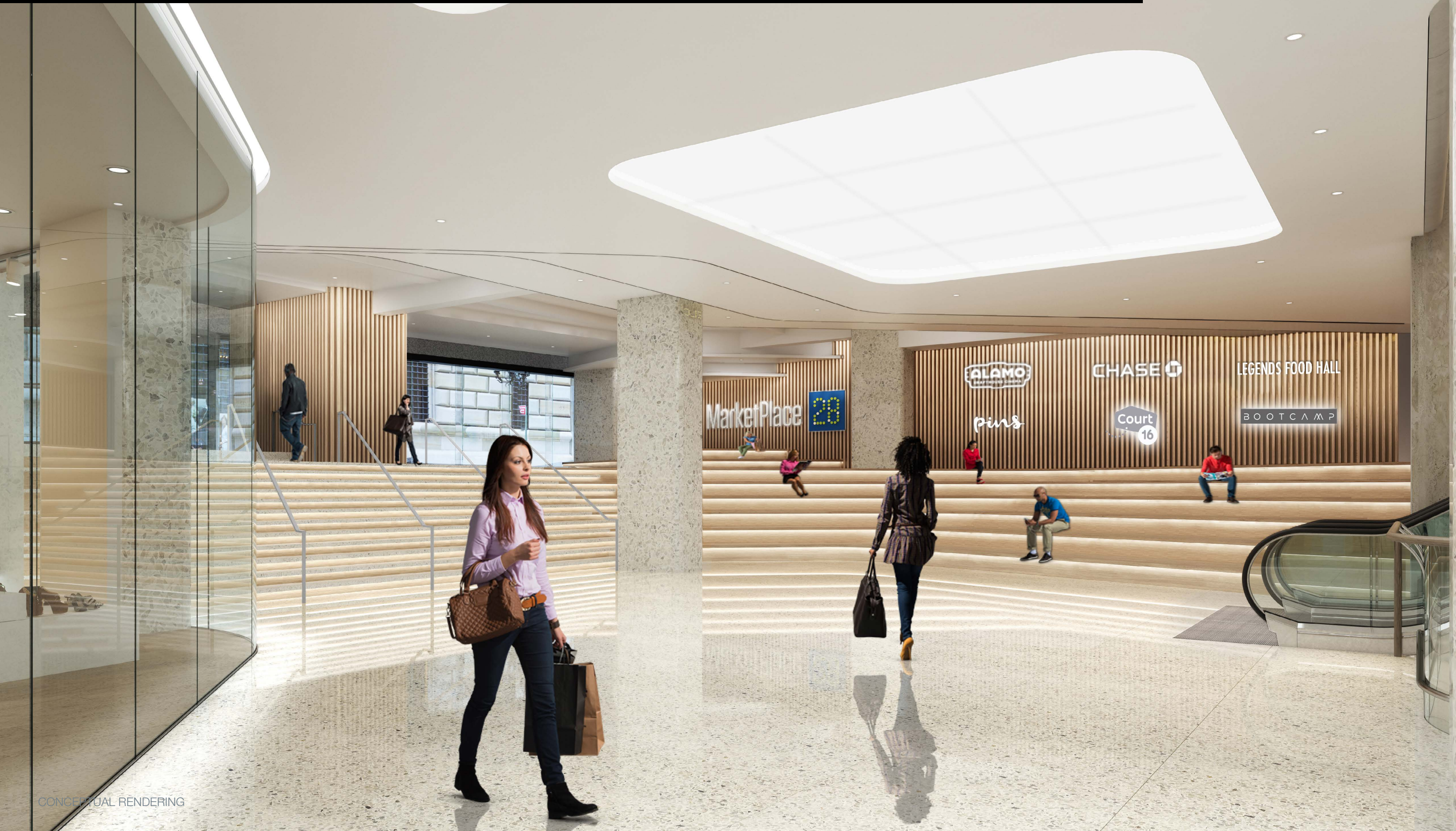
# VIEW FROM PLAZA ENTRANCE



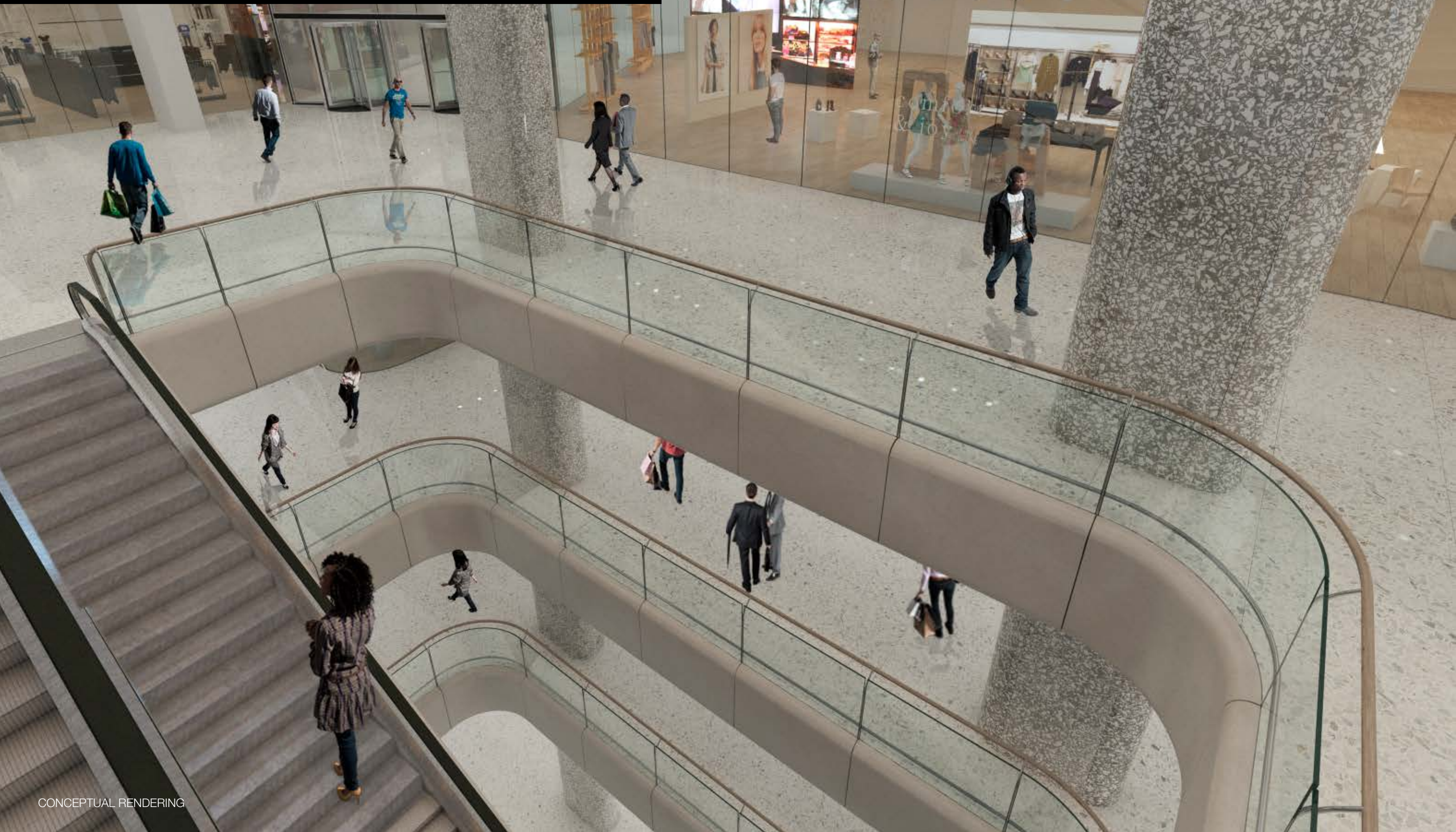
# STREET LEVEL



# LIBERTY STREET ENTRANCE - INTERIOR



# VIEW AT ESCALATORS



# SUBWAY ACCESS - WILLIAM STREET ENTRANCE



# PLAZA



# PLAZA ACTIVATION

Proposed farmer's market utilizing private plaza



CONCEPTUAL RENDERING



WELCOME TO FRESH MARKET  
VISIT OUR STORE ON LOWER LEVEL

LOVE

# PLAZA TERRACE





# PLAZA RESTAURANT



CONCEPTUAL RENDERING

GROUND FLOOR

SURROUNDING NOGUCHI ROCK GARDEN



CONCEPTUAL RENDERING

FOOD HALL

GROUND FLOOR



CONCEPTUAL RENDERING

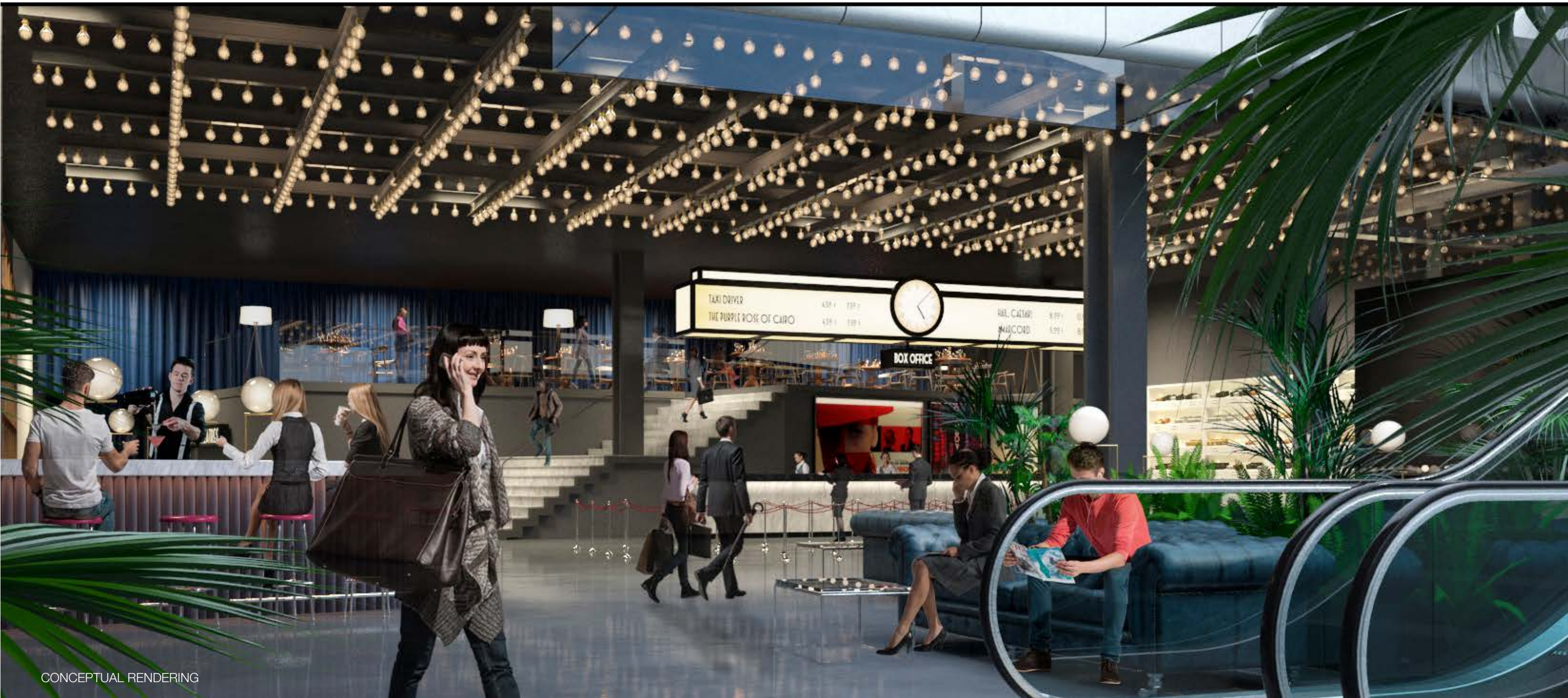
LEASED TO LEGENDS FOOD HALL

# RETAIL OPPORTUNITY LOWER LEVEL 1



# THEATER

## LOWER LEVEL 3



CONCEPTUAL RENDERING

LEASED TO



# RETAIL STACKING PLAN

- AVAILABLE
- LEGENDS FOOD HALL
- CHASE BANK
- MANHATTA / BAY ROOM ENTRANCE
- SING FOR HOPE
- ALAMO DRAFTHOUSE CINEMA
- COURT 16

PLAZA LEVEL  
630 - 2,317 SF



GROUND LEVEL  
945 - 6,476 SF



LOWER LEVEL 1  
10,368 - 27,547 SF



LOWER LEVEL 2  
5,802 SF



LOWER LEVEL 3  
(FULLY LEASED)



# PLAZA LEVEL

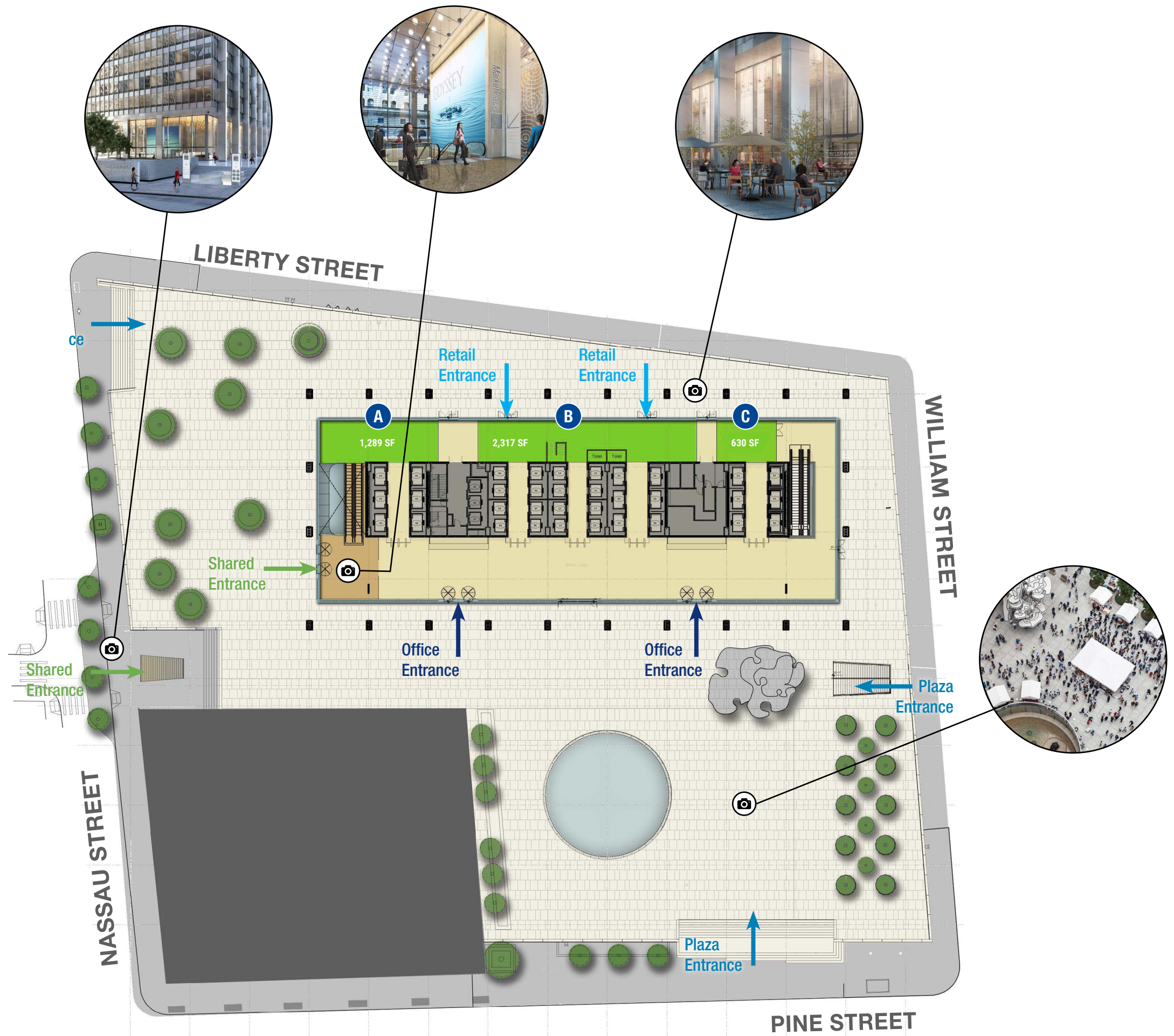


Space A  
1,289 SF

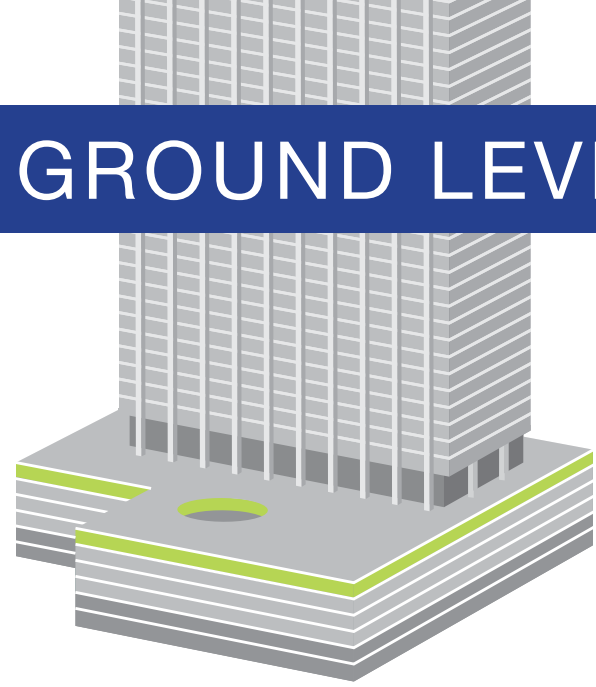
Space B  
2,317 SF

Space C  
630 SF

Ceiling Height  
Approximately 26 FT



# GROUND LEVEL



Space A  
945 SF

Space B  
2,597 SF

Space C  
1,022 SF

Space D  
4,362 SF

Ceiling Height  
Approximately 18 FT





# LOWER LEVEL 1



Space A  
10,368 SF

Space B  
27,547 SF

Ceiling Height  
Approximately 15 FT

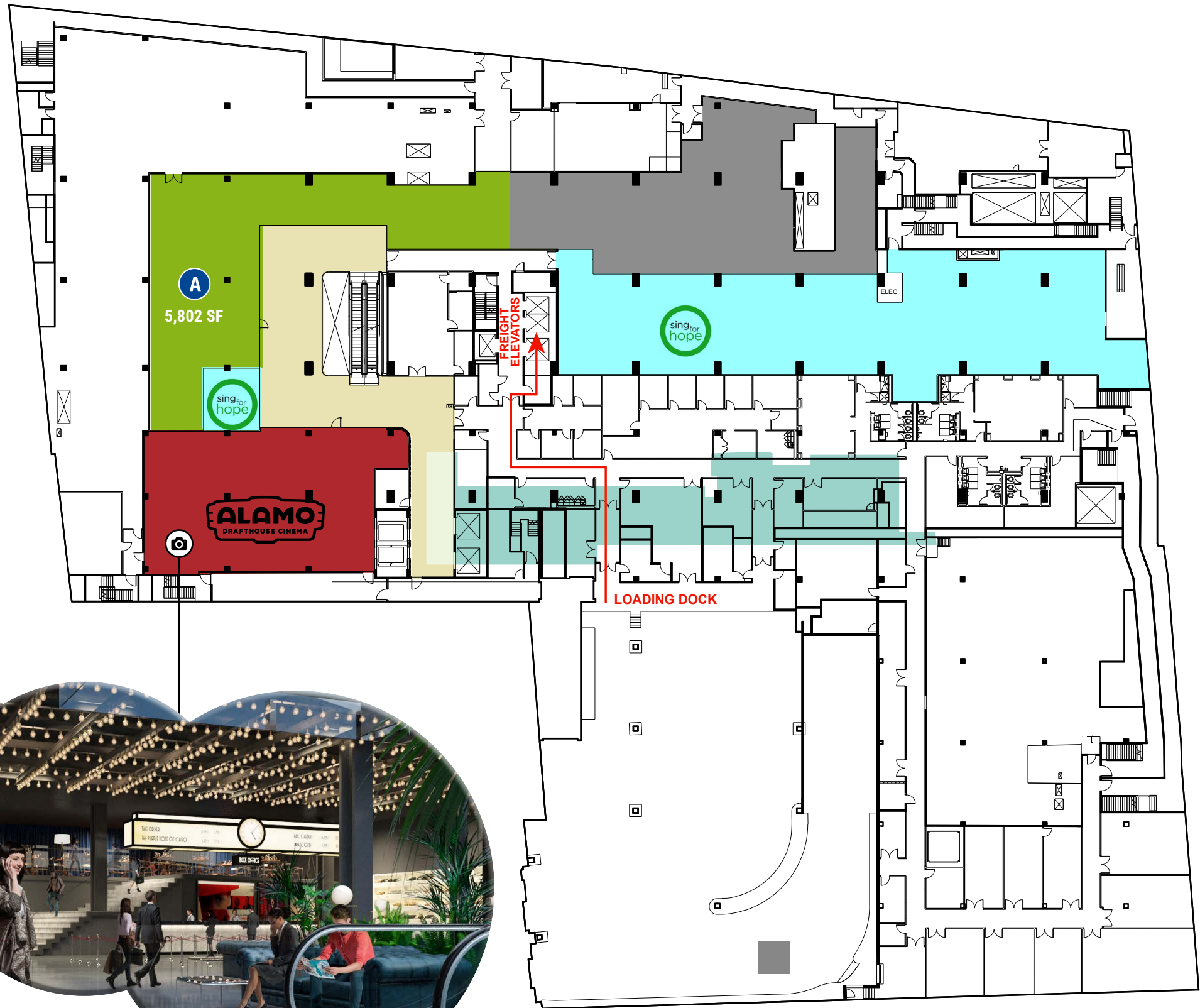


# LOWER LEVEL 2

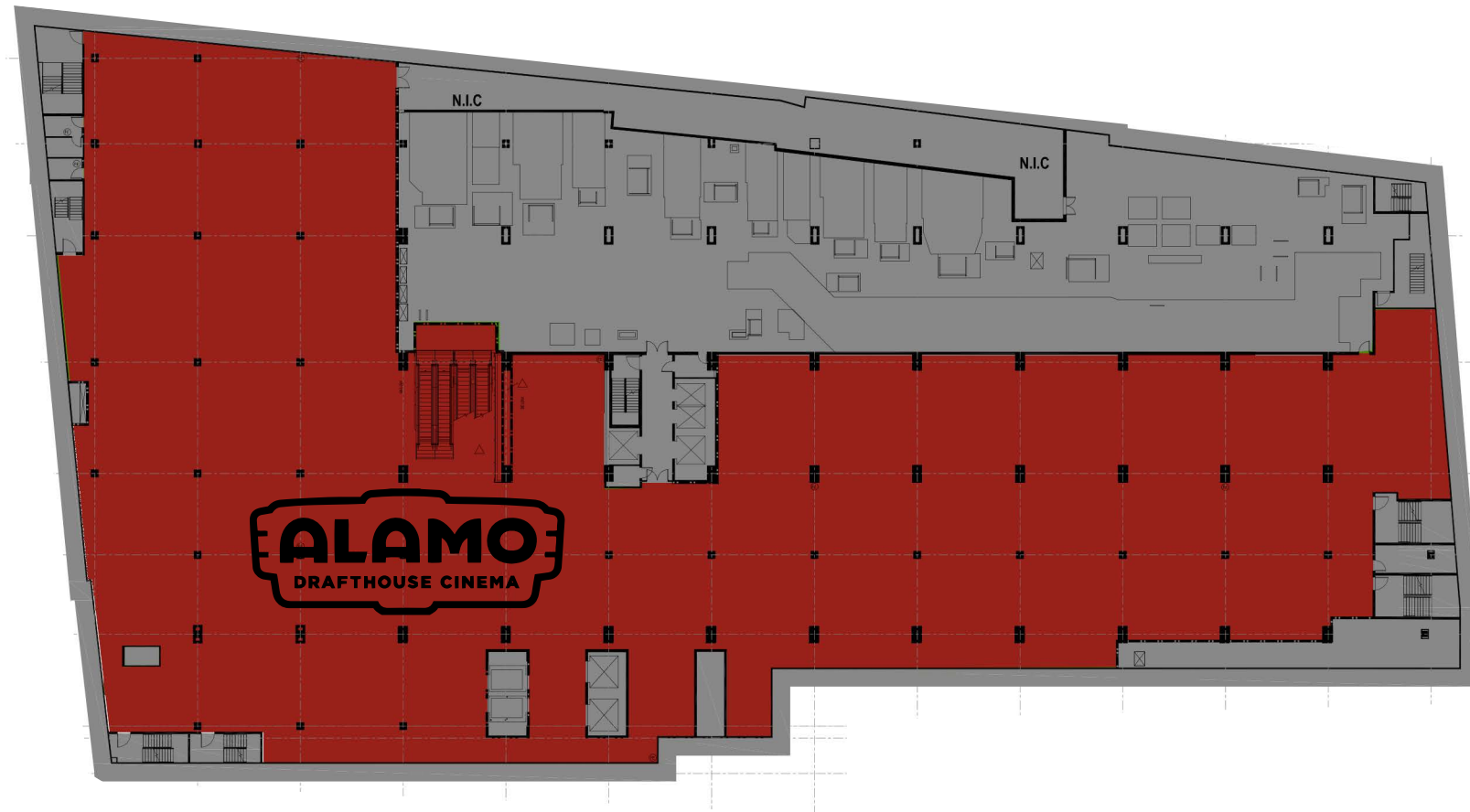


Space A  
5,802 SF

Ceiling Height  
Approximately 12 FT



# LOWER LEVEL 3



# A CLASSIC LANDMARK

Originally built as One Chase Manhattan Plaza, 28 Liberty is an iconic, 2.2 million square foot landmarked commercial office building situated in the center of Lower Manhattan.

Tenants of the building enjoy direct access to six subway lines from the lobby, while entry to the new Fulton Center/World Trade Center transit complex lies just two blocks to the north. Major tenants include Milbank, Tweed, Hadley & McCloy, JP Morgan Chase & Co., Allianz, Attorney General, Booking.com, Wolters Kluwer, London Stock Exchange, and Frankfurt Kurnit.

Owned and managed by Fosun Hive Holdings, the Investment & Management Platform of Fosun Group, since December 2013, the property has been re-imagined to include best-in-class amenities and upgraded infrastructure. Fosun is dedicated to the creation of a world-class business destination.

## DESIGN ARCHITECT

Gordon Bunshaft  
of Skidmore Owings  
and Merrill

## YEAR CONSTRUCTED

1961

## SIZE

2.2 MILLION SQ. FT.

## PLAZA AREA

2.58 ACRES

## HEIGHT

60 STORIES  
(+5 concourse levels)

## CONNECTED

The hub of NY's key transportation routes, and part of the growing diversity of downtown industries.

## ARTS & CULTURE

A true patron of the arts, Fosun celebrates international cultures and world-class artists.

## RICH HISTORY

The tower has been home to industry greats and civic pioneers.

## BEST OF THE BEST

The re-imagined destination will offer diversified amenities, new architectural treatment and robust, enhanced infrastructure.

# ABOUT FOSUN

Fosun was founded in 1992. Fosun International Limited is a family-focused multinational company that has been listed on the main board of the Hong Kong Stock Exchange (00656.HK) since 2007, with total assets exceeded RMB560 billion (c.US\$85 billion) as of June 30, 2018. With its roots in China, and through technology and innovation, Fosun's mission is to create customer-to-maker (C2M) ecosystems in health, happiness and wealth, providing high-quality products and services for families around the world.

For more information, please visit [www.fosun.com](http://www.fosun.com)

# ABOUT FOSUN HIVE HOLDINGS

Fosun Hive Holdings is a property investment and management platform for Fosun. Utilizing “Hive City + Global Landscape” as its core strategy, Fosun Hive is dedicated to becoming the world-beating practitioner in its field.

As a hub of industry resources, Fosun Hive consistently strengthens its sector capabilities. Over the years, Fosun Hive has successfully incubated and grown a number of business groups, including Fosun Intelligent Retail Group, Fosun Integrated Care Group, Fosun Commercial Circulation Group, Fosun Infrastructure Group and Fosun Education Group. Fosun Hive will continue to implement the “Hive” strategy, expanding its property development capacities and empowering various Fosun portfolio businesses.

Through deepening and strengthening industry operations, Fosun Hive will continue to invest and grow businesses through more capitalization, globalization and industrialization. Our constituent global platforms and teams include Sunyu Holdings, Golte, Shanghai Resource Property and IDERA, Resolution Property, PAREF, Four Trees, Everest, Rio Bravo (RE and Fosun Eurasia. Our strategy will continue to nurture an expanding business clusters.

Going forward, Fosun Hive will strive for the implementation of Hive strategy, which enables Fosun portfolio companies to acquire, operate and optimize major projects. Fosun Hive will also focus on the opportunities created through upgrades of global urban centers. With ONE FOSUN, the integrated center of excellence in creating world-class products and services, Fosun Hive will serve the happiness of every client's family around the world.

# MarketPlace



## CONTACT EXCLUSIVE AGENTS

Jeffrey D. Roseman

212-372-2430

jeffrey.roseman@nmrk.com

Ross Kaplan

212-850-5418

ross.kaplan@nmrk.com

Drew Weiss

212-372-2473

drew.weiss@nmrk.com

[28liberty.com](http://28liberty.com)

# NEWMARK

NMRK.COM

The information contained herein has been obtained from sources deemed reliable but has not been verified and no guarantee, warranty or representation, either express or implied, is made with respect to such information. Terms of sale or lease and availability are subject to change or withdrawal without notice.

**FOSUN PROPERTY**  
复星地产