

OFFICE / MEDICAL FOR LEASE

KEARNY OFFICE PARK

8304-8340 CLAIREMONT MESA BOULEVARD
SAN DIEGO, CA 92111

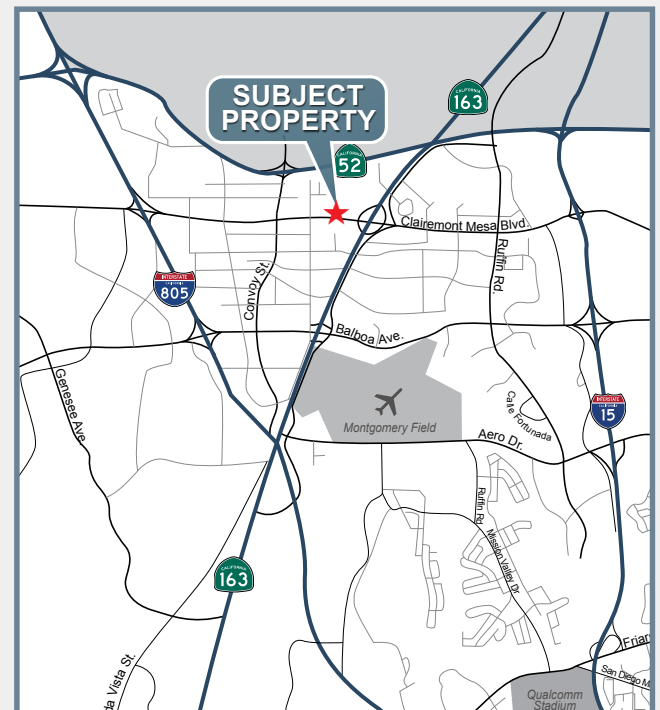


AVAILABILITY

- ± 518 RSF - ± 3,613 RSF Available

PROPERTY HIGHLIGHTS

- Campus style environment
- Great access to freeways
- Parking ratio: ±5/1,000 per rentable square feet
- Five (5) days per week janitorial included in rental rate
- Fiber ready buildings - up to 1,024 Mbps
- New outdoor seating areas and free WI-FI in all common areas



BRANDON KEITH

Senior Vice President
858.458.3326
bkeith@voitco.com
Lic #01177792

CONNOR WIECK

Associate
858.458.3329
cwieck@voitco.com
Lic #02007940

4180 La Jolla Village Dr., Suite 100, La Jolla, CA 92037
858.453.0505 | 858.408.3976 Fax | Lic #01991785 | www.voitco.com

Licensed as a Real Estate Broker and Salesperson by the CA Bar of Real Estate. The information contained herein has been obtained from sources we deem reliable. While we have no reason to doubt its accuracy, we do not guarantee it. ©2018 Voit Real Estate Services, Inc. All Rights Reserved. Real People. Real Solutions.® is a registered trademark of Voit Real Estate Services.

Voit

REAL ESTATE SERVICES

OFFICE / MEDICAL FOR LEASE

KEARNY OFFICE PARK

8304-8340 CLAIREMONT MESA BOULEVARD
SAN DIEGO, CA 92111

BUILDING	SUITE	RSF	\$ PER SF**	COMMENTS
8304	201	1,081	\$1.75 FSG	2 private office, 2 open areas, storage
8304	212	2,002	\$1.75 FSG	6 private offices, storage, large open area
8316	107	750	\$1.85 FSG	Open area, 2 private offices
8316	108	1,245	\$1.85 FSG	Open area, 1 private office, storage
8316	207	521	\$1.75 FSG	Open area, 1 private office
8316	209	524	\$1.75 FSG	Reception, 1 private office
8322	101/102	1,039	\$1.85 FSG	Reception, storage, break room, open office
8322	203	848	\$1.75 FSG	Completely open office
8322	205	892	\$1.75 FSG	Completely open office
8322	206	1,549	\$1.75 FSG	Open area, 2 private offices
8328	214	797	\$1.75 FSG	2 private offices, open area
8334	109	1,437	\$1.85 FSG	2 private offices, storage room, open area
8334	113/114	1,219	\$1.85 FSG	Open office area
8334	202-212	3,613	\$1.75 FSG	Private offices, open area, break room, server room
8334	203	518	\$1.75 FSG	2 private offices
8334	209	1,081	\$1.85 FSG	Open office, break room, 2 private offices
8334	211/213	1,108	\$1.75 FSG	4 privates offices and reception area
8340	110	995	\$1.85 FSG	1 private office, large open area
8340	202/206	1,777	\$1.75 FSG	3 private offices, 2 open office areas, break room, reception area
8340	210/212	1,228	\$1.75 FSG	Reception, open office, 1 private office and break room

** Rate includes electricity 40 hours per week and janitorial service. \$0.10 per RSF for after hours electrical costs

BRANDON KEITH

Senior Vice President
858.458.3326
bkeith@voitco.com
Lic #01177792

CONNOR WIECK

Associate
858.458.3329
cwieck@voitco.com
Lic #02007940

4180 La Jolla Village Dr., Suite 100, La Jolla, CA 92037
858.453.0505 | 858.408.3976 Fax | Lic #01991785 | www.voitco.com

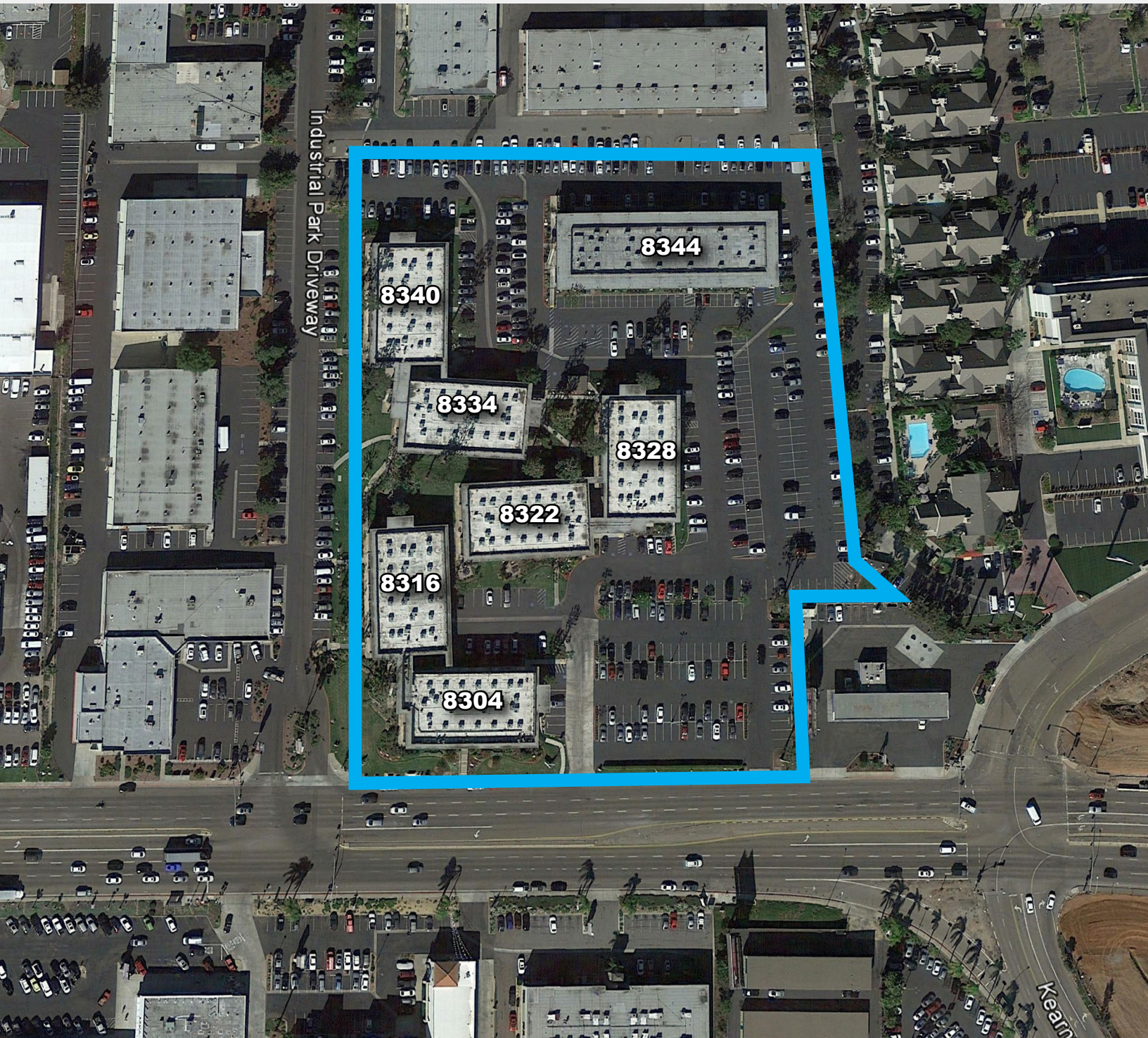
Voit

REAL ESTATE SERVICES

OFFICE / MEDICAL FOR LEASE

KEARNY OFFICE PARK

8304-8340 CLAIREMONT MESA BOULEVARD
SAN DIEGO, CA 92111



BRANDON KEITH

Senior Vice President
858.458.3326
bkeith@voitco.com
Lic #01177792

CONNOR WIECK

Associate
858.458.3329
cwieck@voitco.com
Lic #02007940

4180 La Jolla Village Dr., Suite 100, La Jolla, CA 92037
858.453.0505 | 858.408.3976 Fax | Lic #01991785 | www.voitco.com

Licensed as a Real Estate Broker and Salesperson by the CA Bur of Real Estate. The information contained herein has been obtained from sources we deem reliable. While we have no reason to doubt its accuracy, we do not guarantee it. ©2018 Voit Real Estate Services, Inc. All Rights Reserved. Real People. Real Solutions.® is a registered trademark of Voit Real Estate Services.

Voit

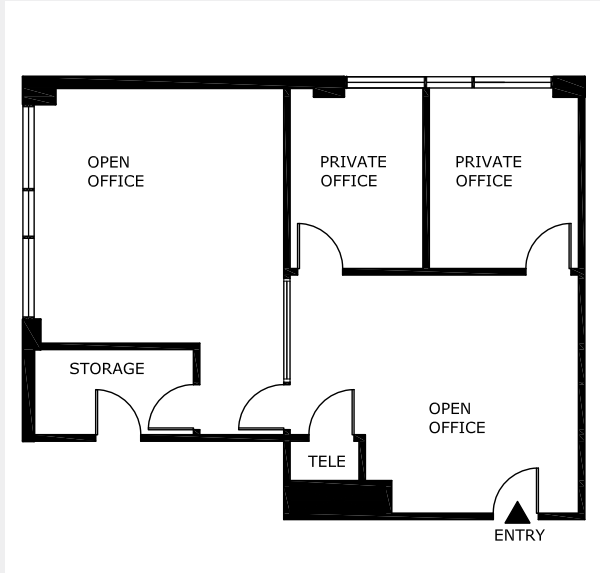
REAL ESTATE SERVICES

OFFICE / MEDICAL FOR LEASE

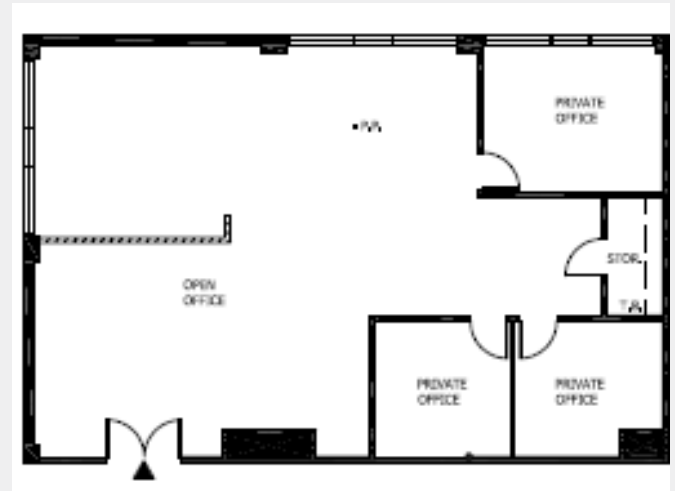
KEARNY OFFICE PARK

8304-8340 CLAIREMONT MESA BOULEVARD
SAN DIEGO, CA 92111

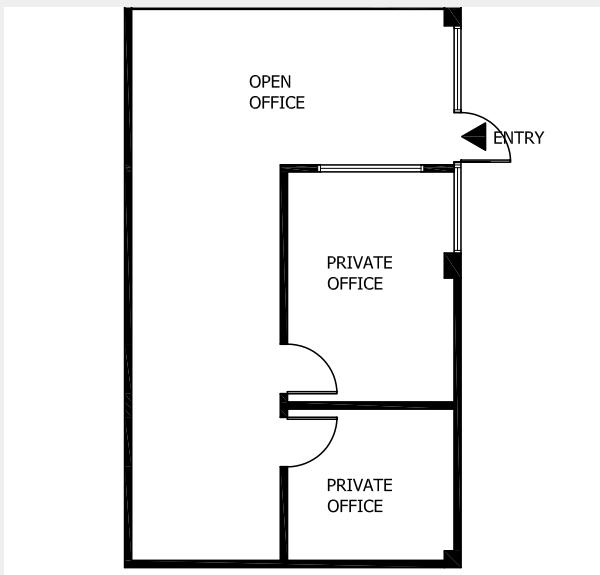
8304 Clairemont Mesa Boulevard
SUITE 201: ±1,081 RSF



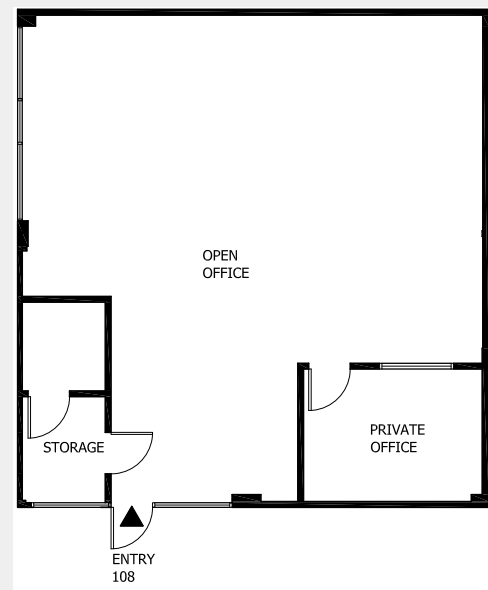
8304 Clairemont Mesa Boulevard
SUITE 212: ±2,002 RSF



8316 Clairemont Mesa Boulevard
SUITE 107: ±750 RSF



8316 Clairemont Mesa Boulevard
SUITE 108: ±1,245 RSF



BRANDON KEITH
Senior Vice President
858.458.3326
bkeith@voitco.com
Lic #01177792

CONNOR WIECK
Associate
858.458.3329
cwieck@voitco.com
Lic #02007940

4180 La Jolla Village Dr., Suite 100, La Jolla, CA 92037
858.453.0505 | 858.408.3976 Fax | Lic #01991785 | www.voitco.com

Licensed as a Real Estate Broker and Salesperson by the CA Bar of Real Estate. The information contained herein has been obtained from sources we deem reliable. While we have no reason to doubt its accuracy, we do not guarantee it. ©2015 Voit Real Estate Services, Inc. All Rights Reserved. Real People. Real Solutions.® is a registered trademark of Voit Real Estate Services.

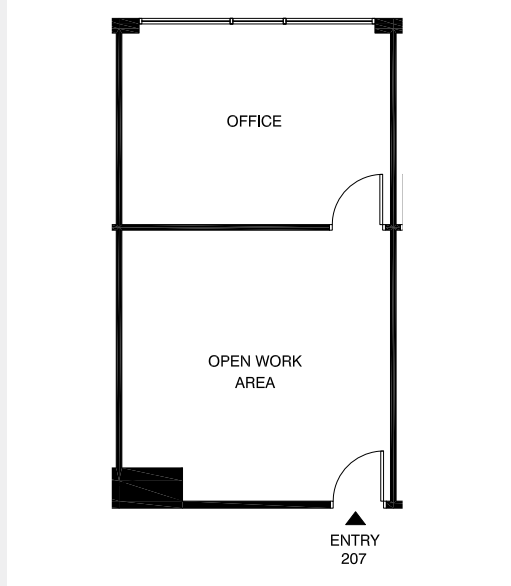
Voit
REAL ESTATE SERVICES

OFFICE / MEDICAL FOR LEASE

KEARNY OFFICE PARK

8304-8340 CLAIREMONT MESA BOULEVARD
SAN DIEGO, CA 92111

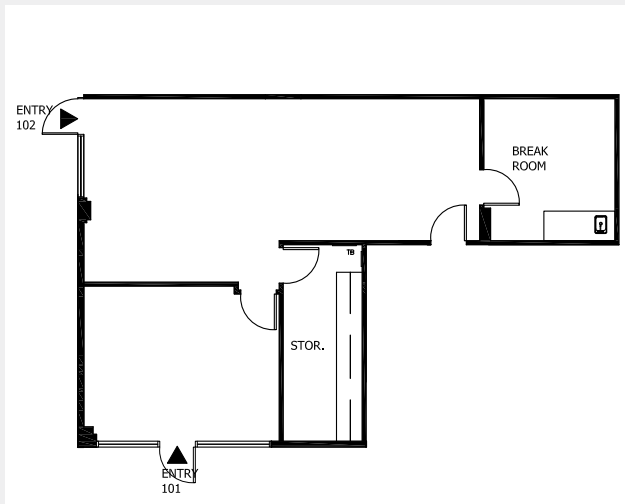
8316 Clairemont Mesa Boulevard SUITE 207: ±521 RSF



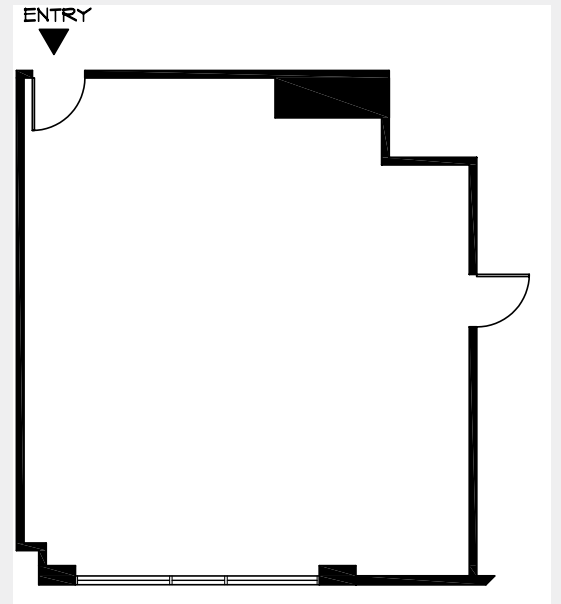
8316 Clairemont Mesa Boulevard SUITE 209: ±524 RSF



8322 Clairemont Mesa Boulevard SUITE 101/102: ±1,039 RSF



8322 Clairemont Mesa Boulevard SUITE 203: ±848 RSF



BRANDON KEITH

Senior Vice President
858.458.3326
bkeith@voitco.com
Lic #01177792

CONNOR WIECK

Associate
858.458.3329
cwieck@voitco.com
Lic #02007940

4180 La Jolla Village Dr., Suite 100, La Jolla, CA 92037
858.453.0505 | 858.408.3976 Fax | Lic #01991785 | www.voidco.com

Licensed as a Real Estate Broker and Salesperson by the CA Bar of Real Estate. The information contained herein has been obtained from sources we deem reliable. While we have no reason to doubt its accuracy, we do not guarantee it. ©2018 Voit Real Estate Services, Inc. All Rights Reserved. Real People. Real Solutions.® is a registered trademark of Voit Real Estate Services.

Voit

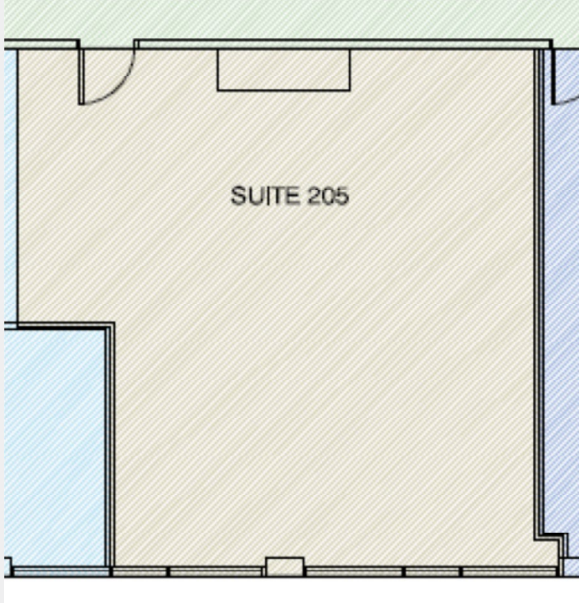
REAL ESTATE SERVICES

OFFICE / MEDICAL FOR LEASE

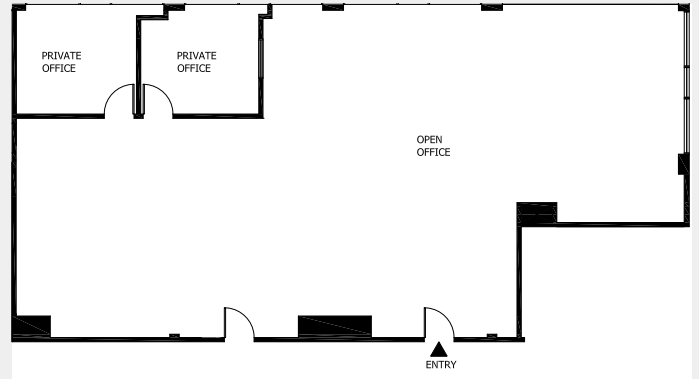
KEARNY OFFICE PARK

8304-8340 CLAIREMONT MESA BOULEVARD
SAN DIEGO, CA 92111

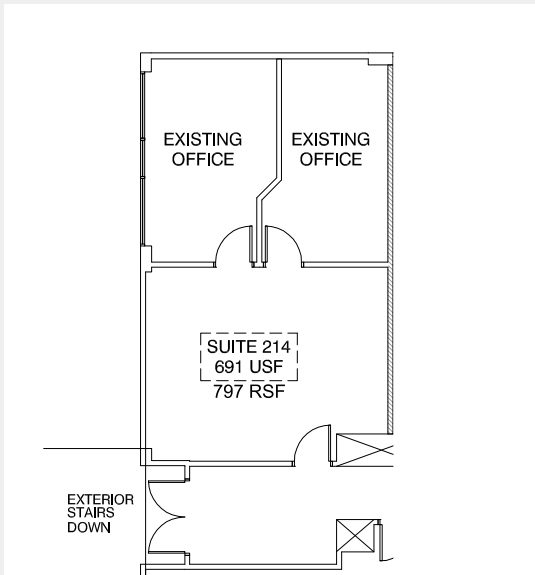
8322 Clairemont Mesa Boulevard SUITE 205: ±892 RSF



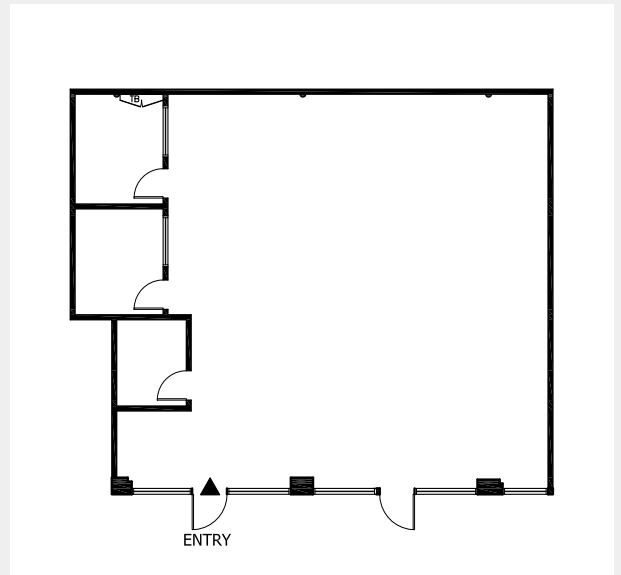
8322 Clairemont Mesa Boulevard SUITE 206: ±1,549 RSF



8328 Clairemont Mesa Boulevard SUITE 214: ±797 RSF



8334 Clairemont Mesa Boulevard SUITE 109: ±1,437 RSF



BRANDON KEITH

Senior Vice President
858.458.3326
bkeith@voitco.com
Lic #01177792

CONNOR WIECK

Associate
858.458.3329
cwieck@voitco.com
Lic #02007940

4180 La Jolla Village Dr., Suite 100, La Jolla, CA 92037
858.453.0505 | 858.408.3976 Fax | Lic #01991785 | www.voitco.com

Licensed as a Real Estate Broker and Salesperson by the CA Bar of Real Estate. The information contained herein has been obtained from sources we deem reliable. While we have no reason to doubt its accuracy, we do not guarantee it. ©2018 Voit Real Estate Services, Inc. All Rights Reserved. Real People. Real Solutions.® is a registered trademark of Voit Real Estate Services.

Voit

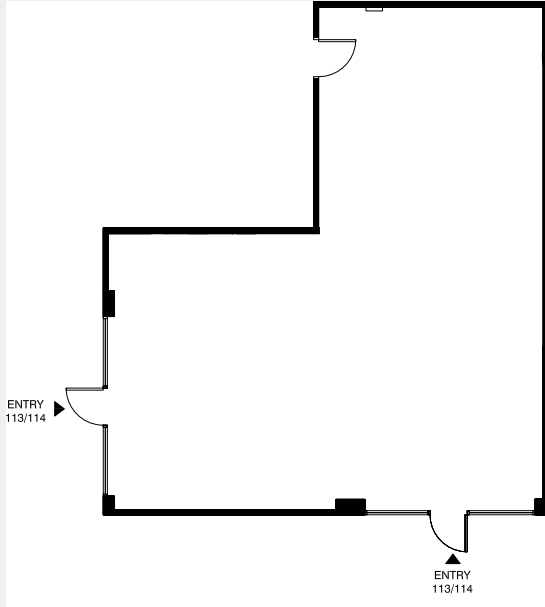
REAL ESTATE SERVICES

OFFICE / MEDICAL FOR LEASE

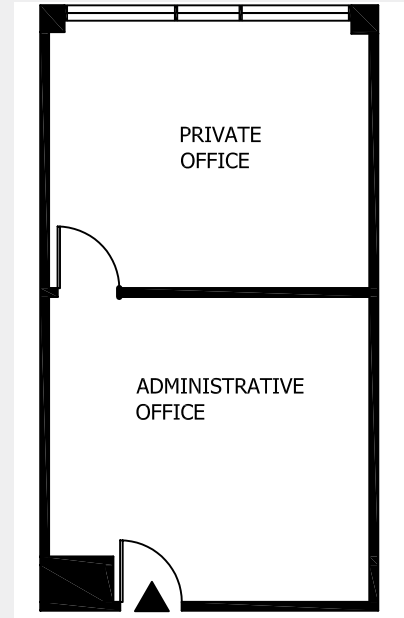
KEARNY OFFICE PARK

8304-8340 CLAIREMONT MESA BOULEVARD
SAN DIEGO, CA 92111

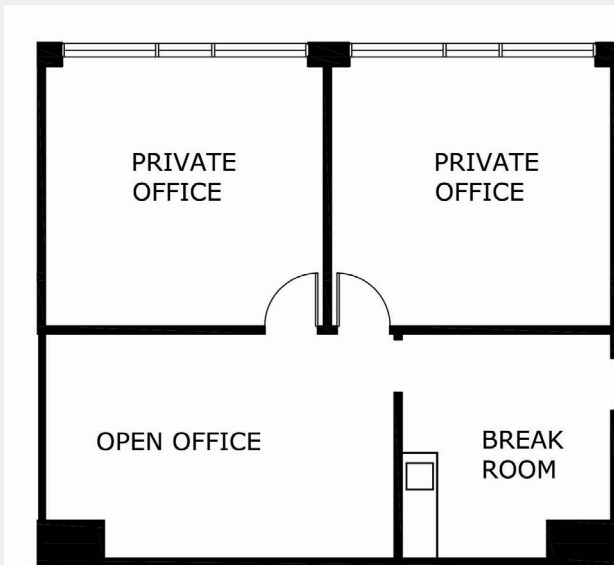
8334 Clairemont Mesa Boulevard
SUITE 113/114: ±1,219 RSF



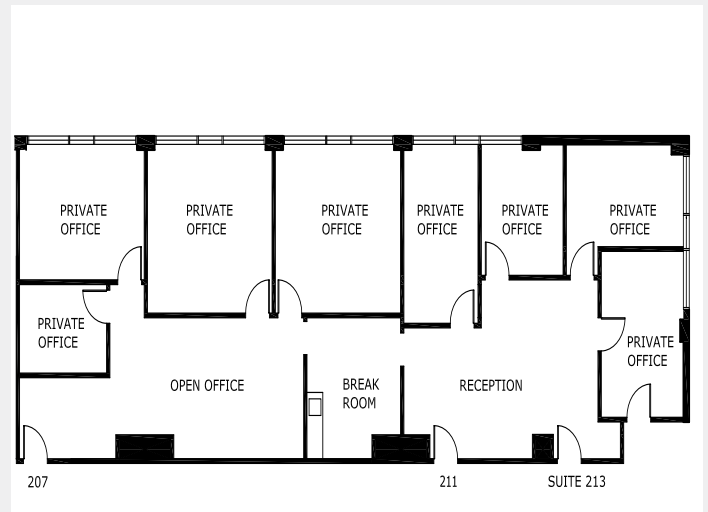
8334 Clairemont Mesa Boulevard
SUITE 203: ±518 RSF



8334 Clairemont Mesa Boulevard
SUITE 209: ±1,081 RSF



8334 Clairemont Mesa Boulevard
SUITE 211/213: ±1,108 RSF



BRANDON KEITH

Senior Vice President
858.458.3326
bkeith@voitco.com
Lic #01177792

CONNOR WIECK

Associate
858.458.3329
cwieck@voitco.com
Lic #02007940

4180 La Jolla Village Dr., Suite 100, La Jolla, CA 92037
858.453.0505 | 858.408.3976 Fax | Lic #01991785 | www.voidco.com

Voit

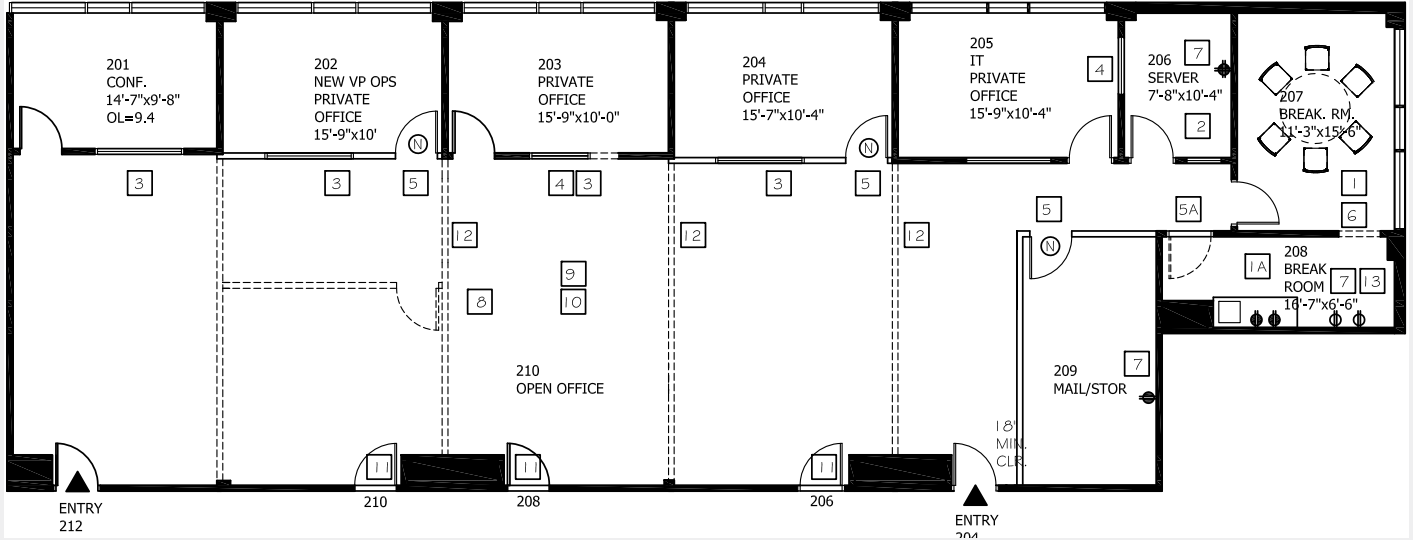
REAL ESTATE SERVICES

OFFICE / MEDICAL FOR LEASE

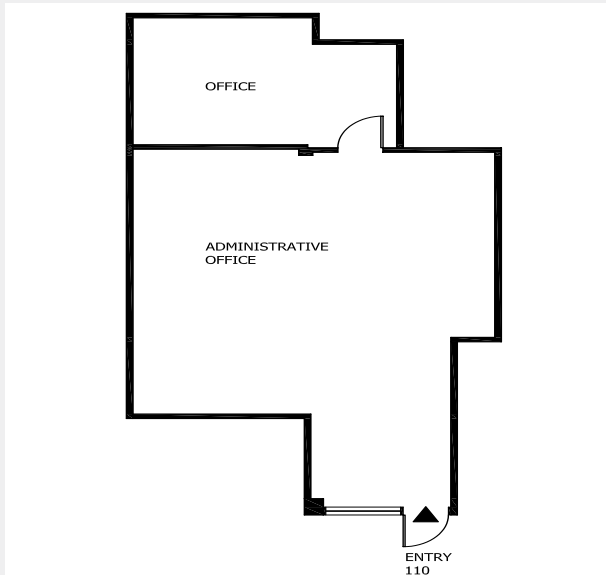
KEARNY OFFICE PARK

8304-8340 CLAIREMONT MESA BOULEVARD
SAN DIEGO, CA 92111

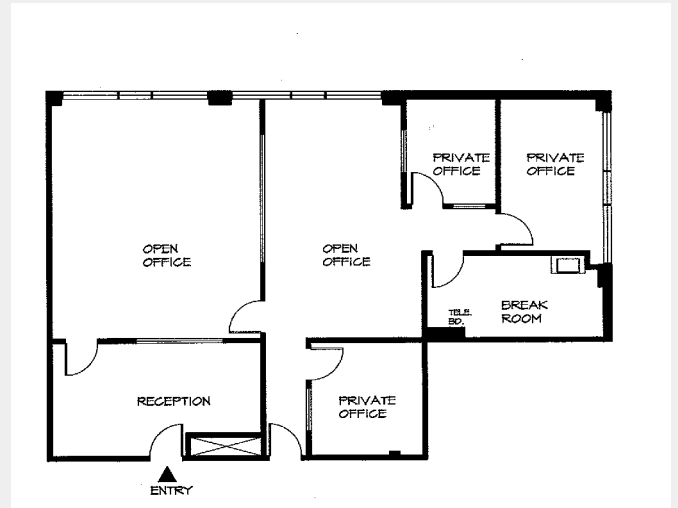
8334 Clairemont Mesa Boulevard SUITE 202/212: ±3,613 RSF



8340 Clairemont Mesa Boulevard SUITE 110: ±995 RSF



8340 Clairemont Mesa Boulevard SUITE 202/206: ±1,777 RSF



BRANDON KEITH

Senior Vice President
858.458.3326
bkeith@voitco.com
Lic #01177792

CONNOR WIECK

Associate
858.458.3329
cwieck@voitco.com
Lic #02007940

4180 La Jolla Village Dr., Suite 100, La Jolla, CA 92037
858.453.0505 | 858.408.3976 Fax | Lic #01991785 | www.voitco.com

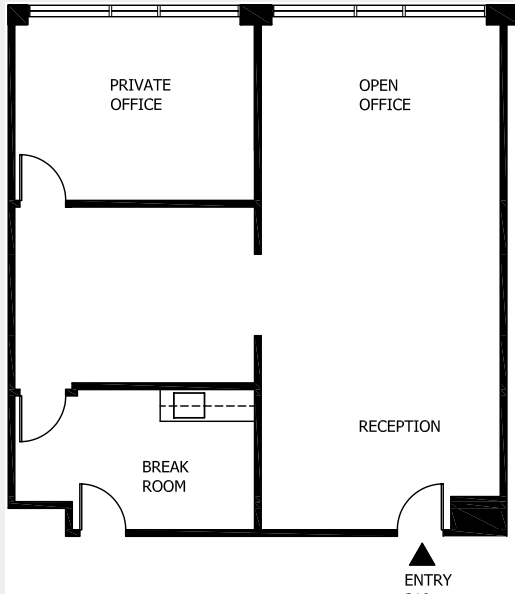
Voit
REAL ESTATE SERVICES

OFFICE / MEDICAL FOR LEASE

KEARNY OFFICE PARK

8304-8340 CLAIREMONT MESA BOULEVARD
SAN DIEGO, CA 92111

8340 Clairemont Mesa Boulevard
SUITE 210/212: ±1,228 RSF



BRANDON KEITH

Senior Vice President
858.458.3326
bkeith@voitco.com
Lic #01177792

CONNOR WIECK

Associate
858.458.3329
cwieck@voitco.com
Lic #02007940

4180 La Jolla Village Dr., Suite 100, La Jolla, CA 92037
858.453.0505 | 858.408.3976 Fax | Lic #01991785 | www.voitco.com

Licensed as a Real Estate Broker and Salesperson by the CA Bar of Real Estate. The information contained herein has been obtained from sources we deem reliable. While we have no reason to doubt its accuracy, we do not guarantee it. ©2018 Voit Real Estate Services, Inc. All Rights Reserved. Real People. Real Solutions.® is a registered trademark of Voit Real Estate Services.

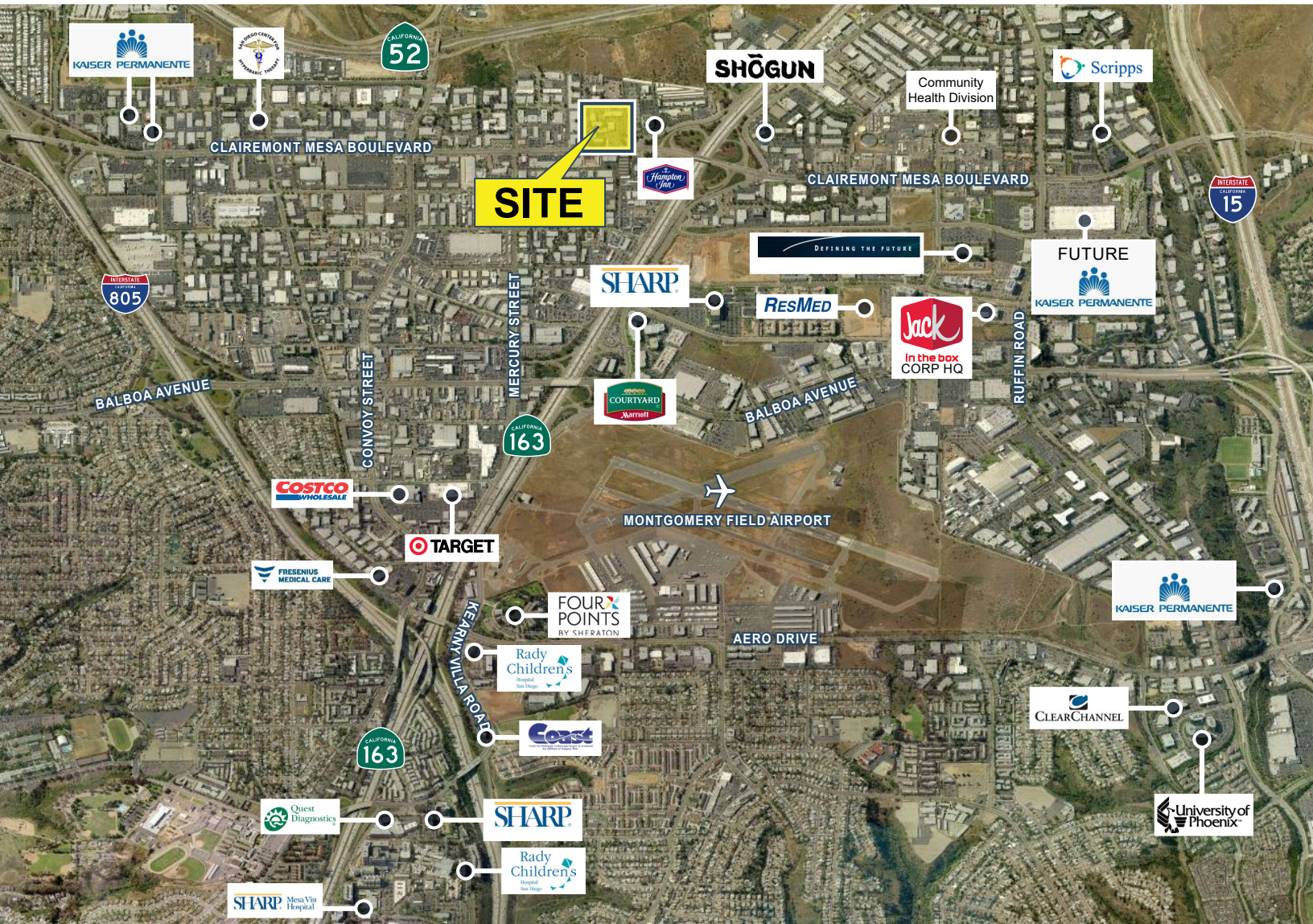
Voit

REAL ESTATE SERVICES

OFFICE / MEDICAL FOR LEASE

KEARNY OFFICE PARK

8304-8340 CLAIREMONT MESA BOULEVARD
SAN DIEGO, CA 92111



BRANDON KEITH

Senior Vice President
858.458.3326
bkeith@voitco.com
Lic #01177792

CONNOR WIECK

Associate
858.458.3329
cwieck@voitco.com
Lic #02007940

4180 La Jolla Village Dr., Suite 100, La Jolla, CA 92037
858.453.0505 | 858.408.3976 Fax | Lic #01991785 | www.voitco.com

Voit

REAL ESTATE SERVICES