

**FOR
LEASE**

FREE-SPAN WAREHOUSE SANFORD, FL

501 PERSIMMON AVE SANFORD, FL 32771



PROPERTY HIGHLIGHTS

- 20,000 SF Free-Span Warehouse (100' x 200') with 18' Clear Height
- Covered Rear Awning for Outside Loading
- (2) Docks (truck well) and (2) Grade Level Loading
- New Office and HVAC system in 2017
- Fenced in Outside Storage (1.28 Acre Industrial Site)
- Easy Access to I-4, 417, and just off SR 46
- Additional 2.5 Acres of Contiguous Land is also Available for Lease beside the site (see broker for details)

Lease Rate: \$6.00 Modified Gross

CONTACT

Vincent F. Wolle, CCIM, SIOR
407.448.1823 *mobile*
CREManager@Gmail.com

Results Real Estate Partners, LLC
Licensed Commercial Real Estate Brokers
108 Commerce Street, Suite 200
Lake Mary, Florida 32746

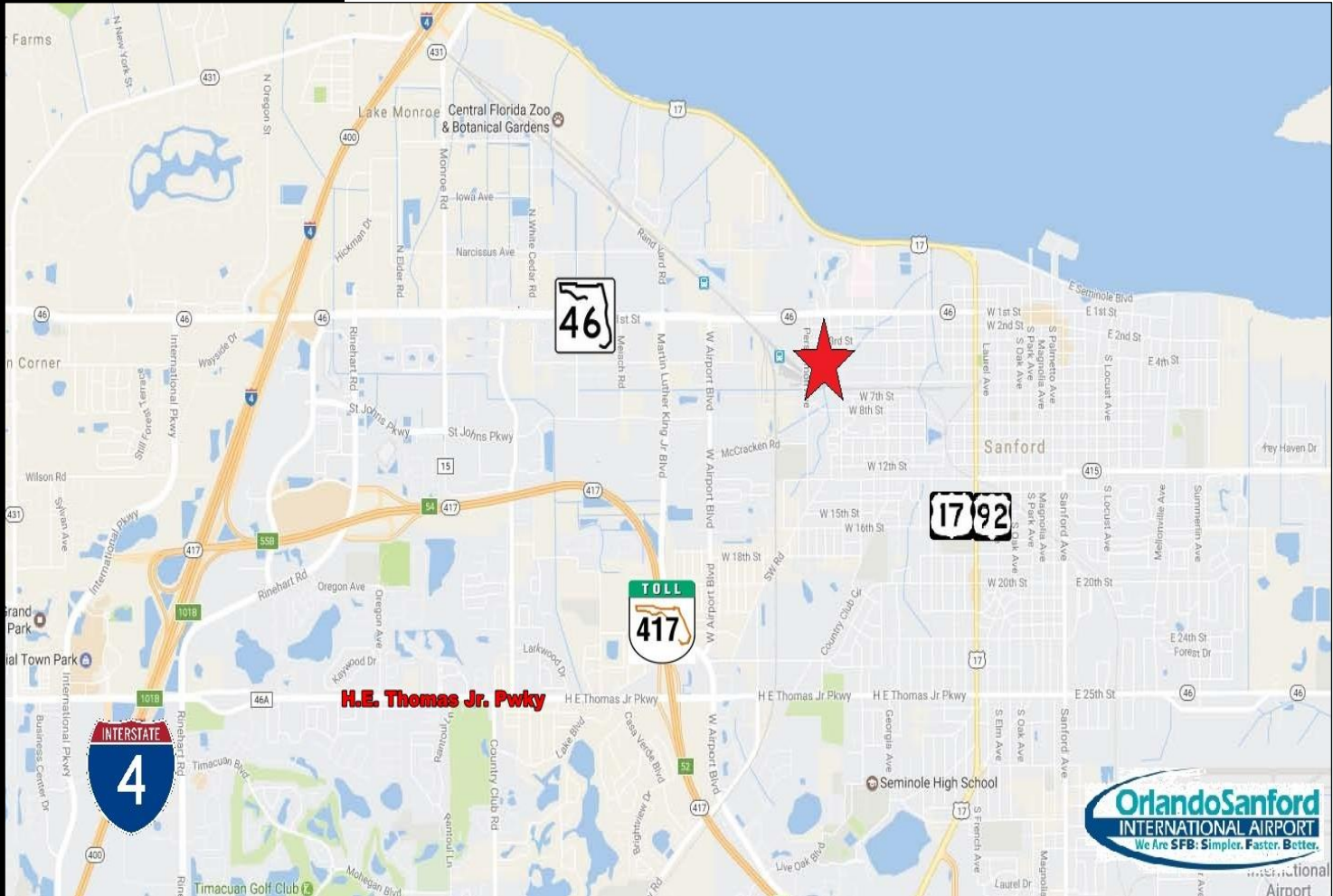
407.647.0200 *main*
407.647.0205 *fax*

www.ResultsREPartners.com

**FOR
LEASE**

FREE-SPAN WAREHOUSE SANFORD, FL

501 PERSIMMON AVE SANFORD, FL 32771



CONTACT

Vincent F. Wolle, CCIM, SIOR
407.448.1823 *mobile*
CREManager@Gmail.com

Results Real Estate Partners, LLC
Licensed Commercial Real Estate Brokers
108 Commerce Street, Suite 200
Lake Mary, Florida 32746

407.647.0200 *main*
407.647.0205 *fax*

www.ResultsREPartners.com

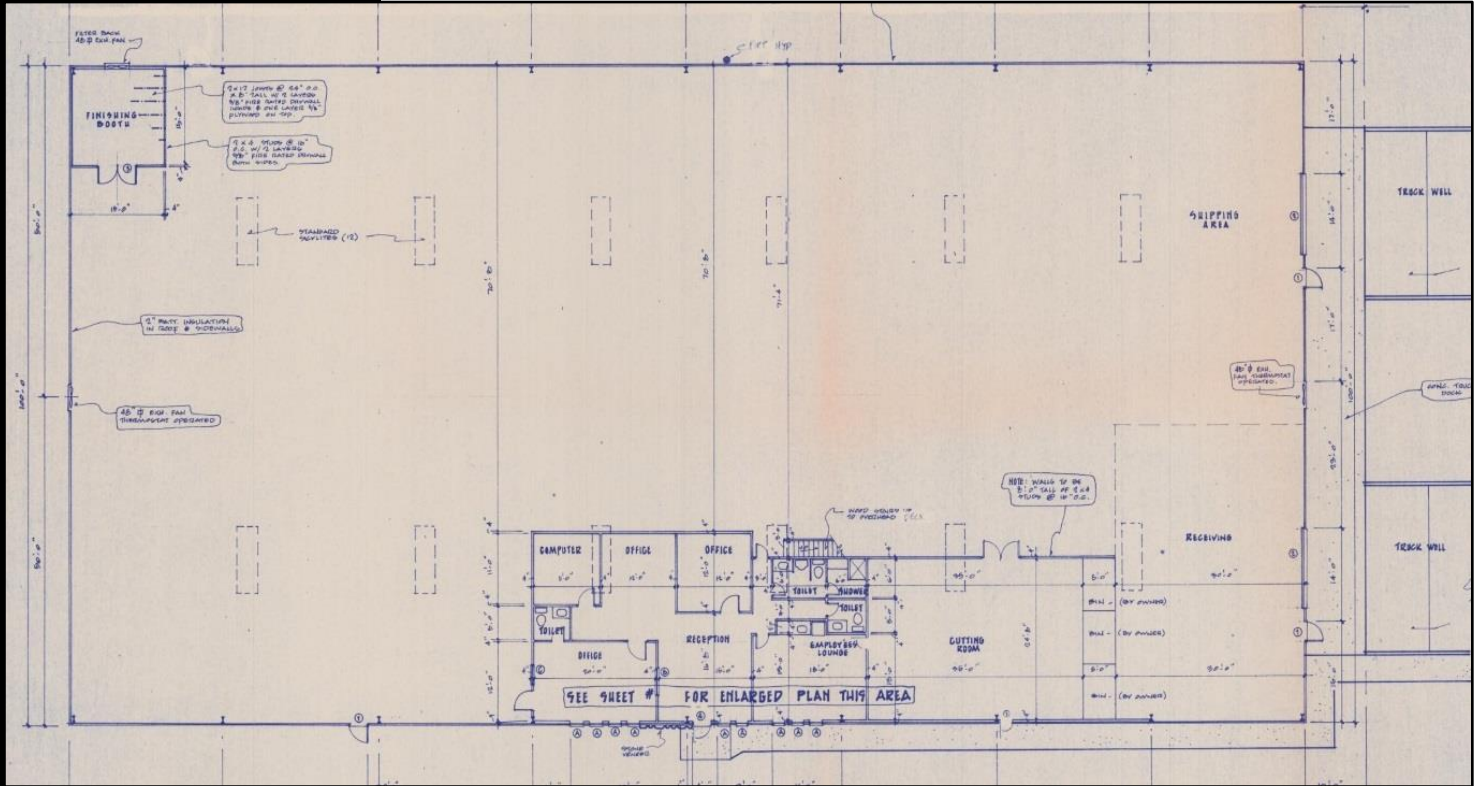


This information is from sources we deem reliable and is subject to prior sale, lease, withdrawal without notice, or change in prices, rates, or conditions. No representation is made as to the accuracy of any information furnished.

**FOR
LEASE**

FREE-SPAN WAREHOUSE SANFORD, FL

501 PERSIMMON AVE SANFORD, FL 32771



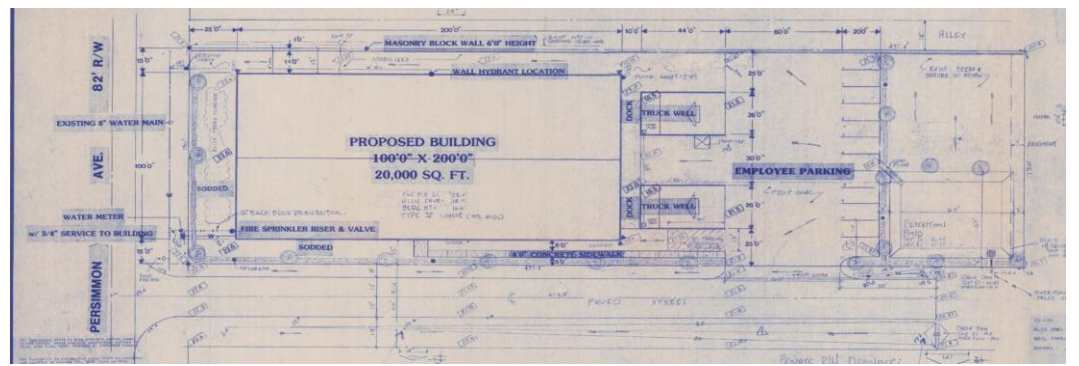
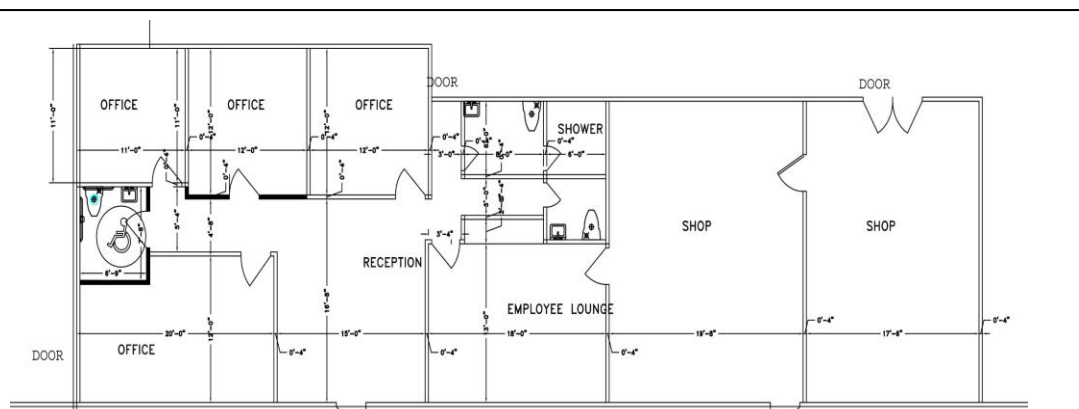
CONTACT

Vincent F. Wollé, CCIM, SIOR
407.448.1823 *mobile*
CREManager@Gmail.com

Results Real Estate Partners, LLC
Licensed Commercial Real Estate Brokers
108 Commerce Street, Suite 200
Lake Mary, Florida 32746

407.647.0200 *main*
407.647.0205 *fax*

www.ResultsREPartners.com



This information is from sources we deem reliable and is subject to prior sale, lease, withdrawal without notice, or change in prices, rates, or conditions. No representation is made as to the accuracy of any information furnished.