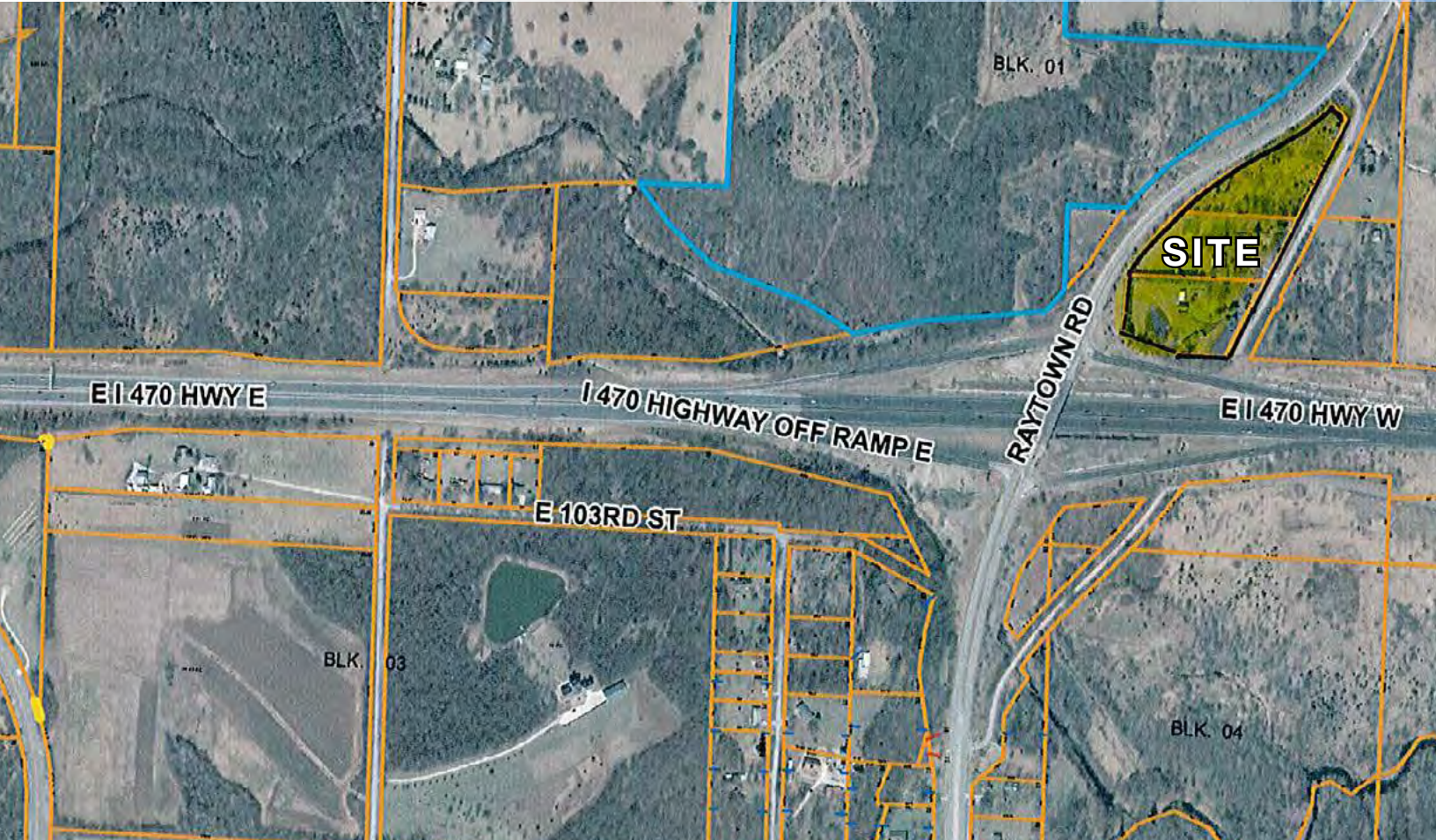




2.43 ACRES VACANT LAND FOR SALE

I-470 & Raytown Rd. (NWC) | 10000 Raytown Rd., Kansas City, MO



SALE PRICE: \$317,552 | 2.43 ACRES OF LAND

DEMOGRAPHICS

	1 mile	3 miles	5 miles
Estimated Population	1,881	48,809	115,010
Avg. Household Income	\$67,564	\$70,489	\$69,383

- 2.43 acres of commercial land
- Triangular piece between old and new Raytown Road
- Great visibility from I-470 & Raytown Road
- Utilities available



CLICK HERE TO VIEW MORE LISTING INFORMATION

For More Information Contact:

WILLIAM GLASGOW | 816.412.7394 | wglasgow@blockandco.com

Exclusive Agent

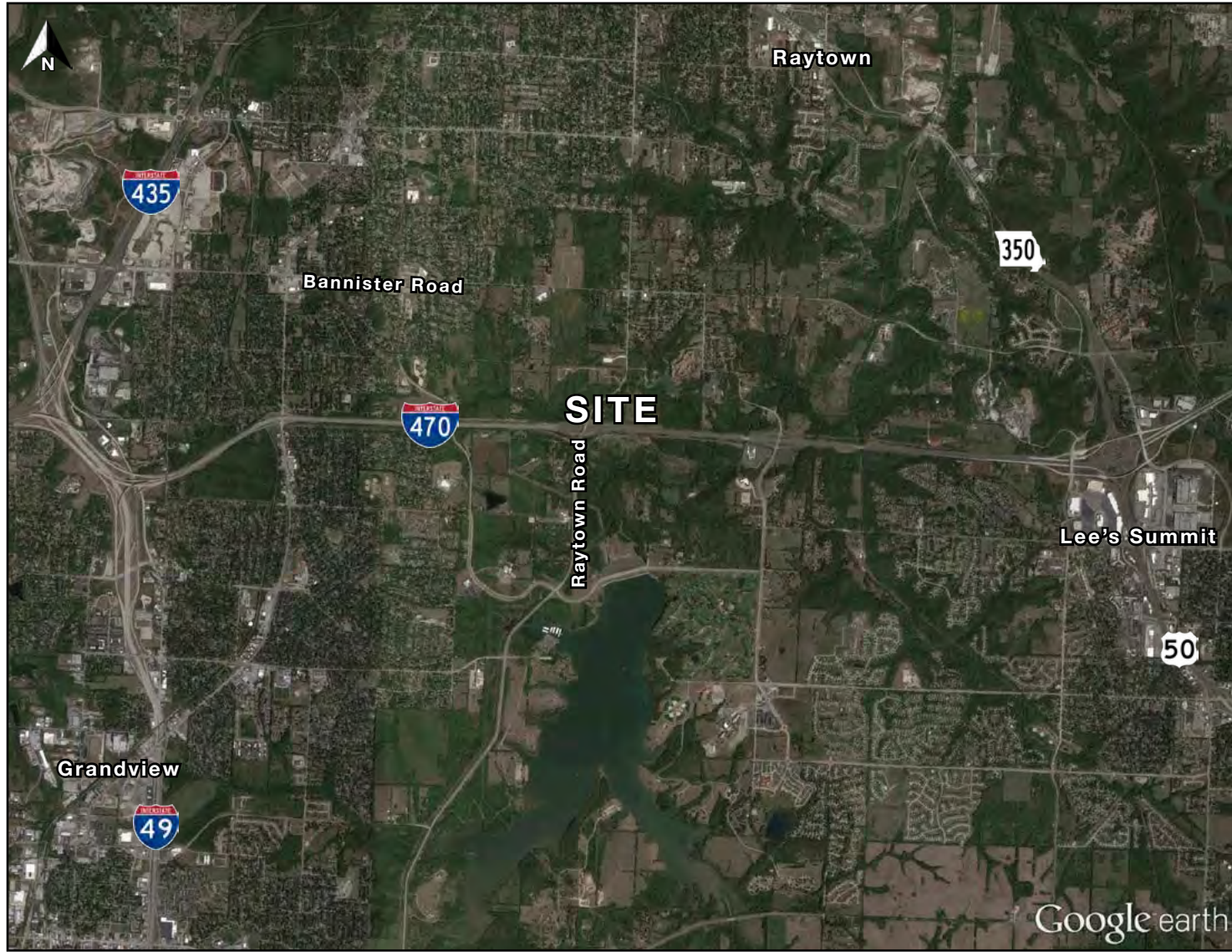




2.43 ACRES VACANT LAND FOR SALE

I-470 & Raytown Rd. (NWC) | 10000 Raytown Rd., Kansas City, MO

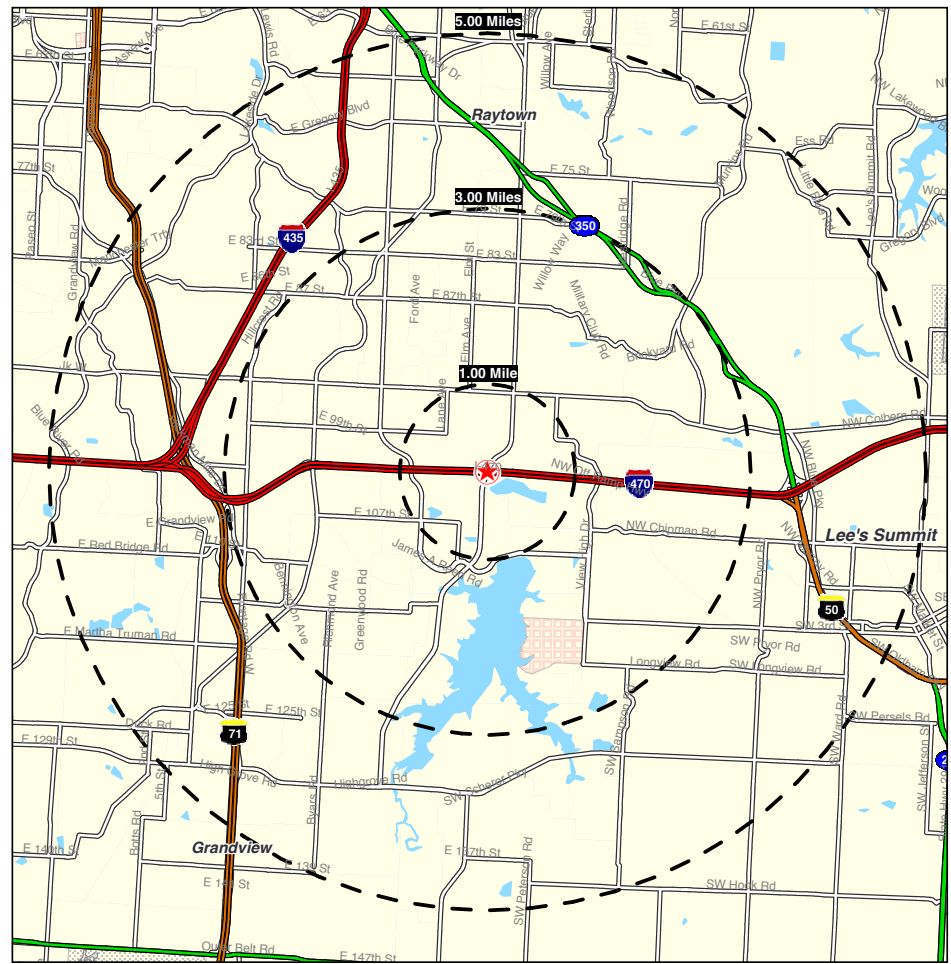
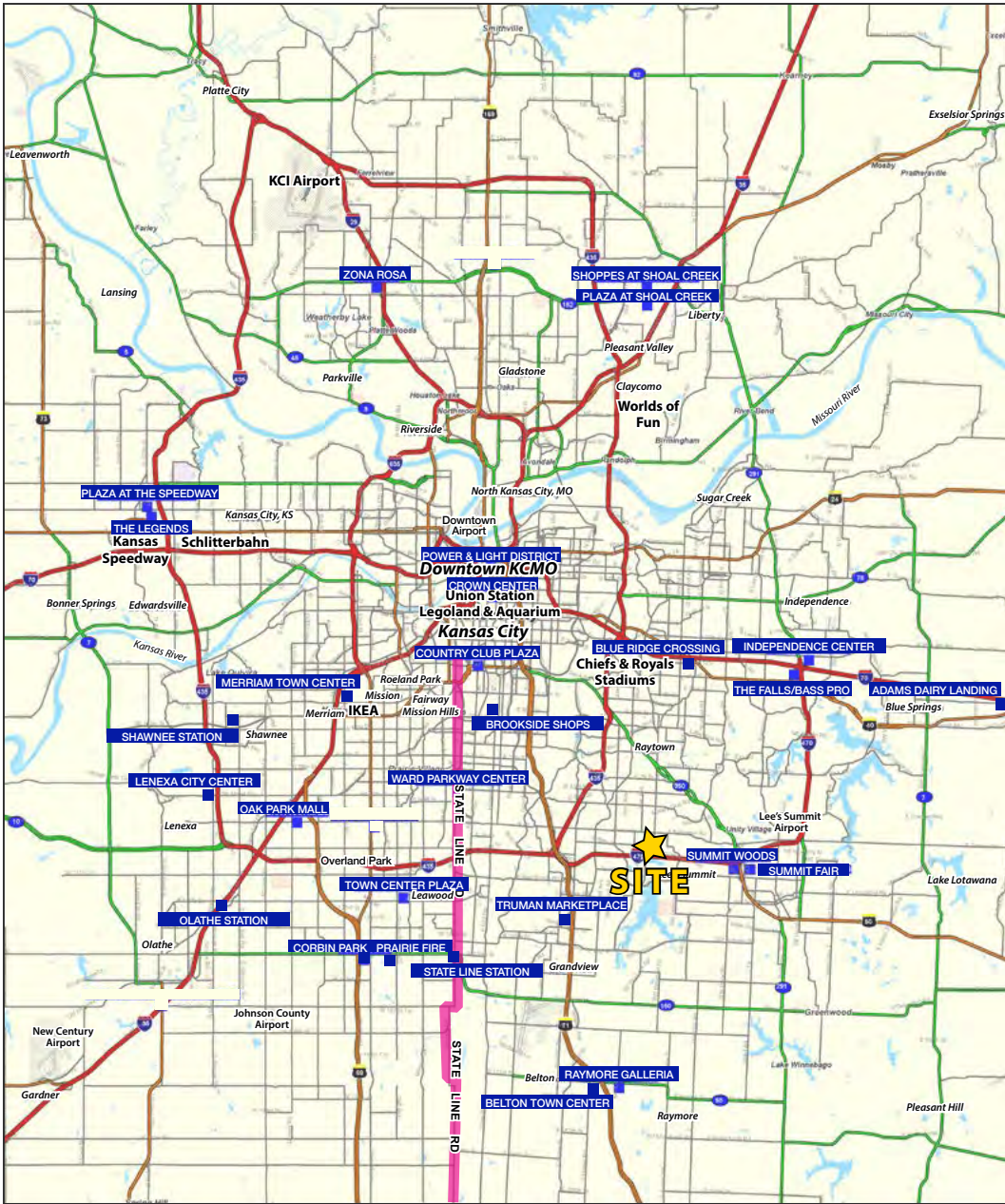
AERIAL





2.43 ACRES VACANT LAND FOR SALE

I-470 & Raytown Rd. (NWC) | 10000 Raytown Rd., Kansas City, MO





2.43 ACRES VACANT LAND FOR SALE

I-470 & Raytown Rd. (NWC) | 10000 Raytown Rd., Kansas City, MO

10000 Raytown Road		1 mi radius	3 mi radius	5 mi radius
Kansas City, MO 64134				
POPULATION	2018 Estimated Population	1,881	48,809	115,010
	2023 Projected Population	1,888	49,580	117,017
	2010 Census Population	1,887	47,593	112,269
	2000 Census Population	2,049	47,409	109,981
	Projected Annual Growth 2018 to 2023	0.1%	0.3%	0.3%
	Historical Annual Growth 2000 to 2018	-0.5%	0.2%	0.3%
	2018 Median Age	36.6	36.4	37.9
HOUSEHOLDS	2018 Estimated Households	801	19,513	48,184
	2023 Projected Households	795	19,624	48,445
	2010 Census Households	753	18,127	44,736
	2000 Census Households	797	18,221	44,494
	Projected Annual Growth 2018 to 2023	-0.2%	0.1%	0.1%
	Historical Annual Growth 2000 to 2018	-	0.4%	0.5%
RACE AND ETHNICITY	2018 Estimated White	51.0%	45.8%	55.8%
	2018 Estimated Black or African American	41.2%	45.4%	35.7%
	2018 Estimated Asian or Pacific Islander	2.9%	2.0%	2.0%
	2018 Estimated American Indian or Native Alaskan	0.4%	0.4%	0.4%
	2018 Estimated Other Races	4.4%	6.5%	6.1%
	2018 Estimated Hispanic	2.9%	6.0%	5.9%
INCOME	2018 Estimated Average Household Income	\$67,564	\$70,489	\$69,383
	2018 Estimated Median Household Income	\$53,513	\$60,947	\$60,103
	2018 Estimated Per Capita Income	\$28,837	\$28,224	\$29,134
EDUCATION (AGE 25+)	2018 Estimated Elementary (Grade Level 0 to 8)	0.8%	2.3%	2.2%
	2018 Estimated Some High School (Grade Level 9 to 11)	4.7%	5.9%	5.5%
	2018 Estimated High School Graduate	40.4%	32.2%	30.6%
	2018 Estimated Some College	26.2%	25.4%	26.1%
	2018 Estimated Associates Degree Only	9.1%	8.5%	8.5%
	2018 Estimated Bachelors Degree Only	14.8%	16.0%	17.2%
	2018 Estimated Graduate Degree	4.1%	9.7%	10.0%
BUSINESS	2018 Estimated Total Businesses	40	804	3,657
	2018 Estimated Total Employees	298	19,507	62,981
	2018 Estimated Employee Population per Business	7.5	24.3	17.2
	2018 Estimated Residential Population per Business	47.3	60.7	31.5