

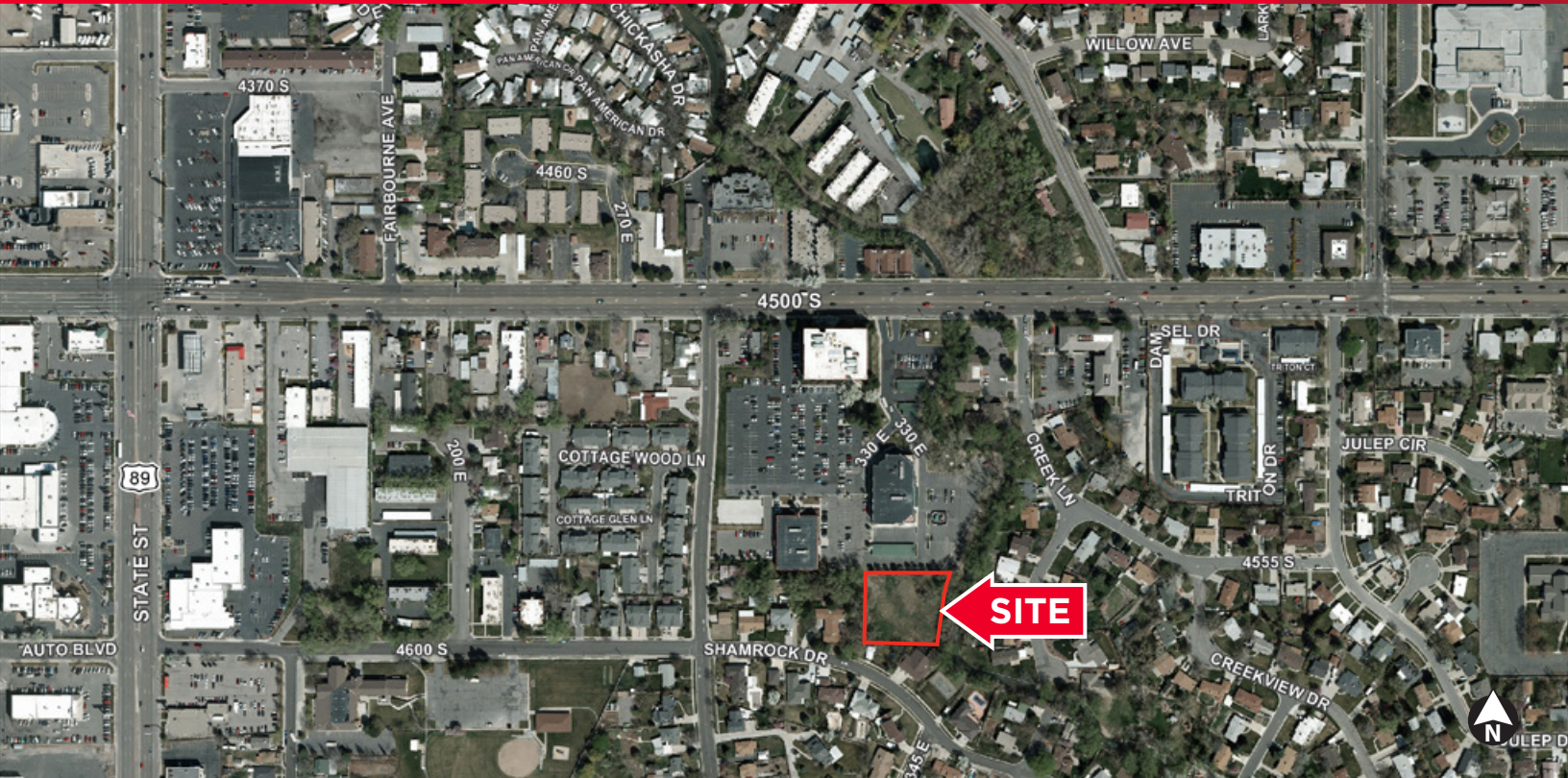


**CUSHMAN &  
WAKEFIELD**  
Commerce

RAW LAND FOR SALE

# Land off 4500 South

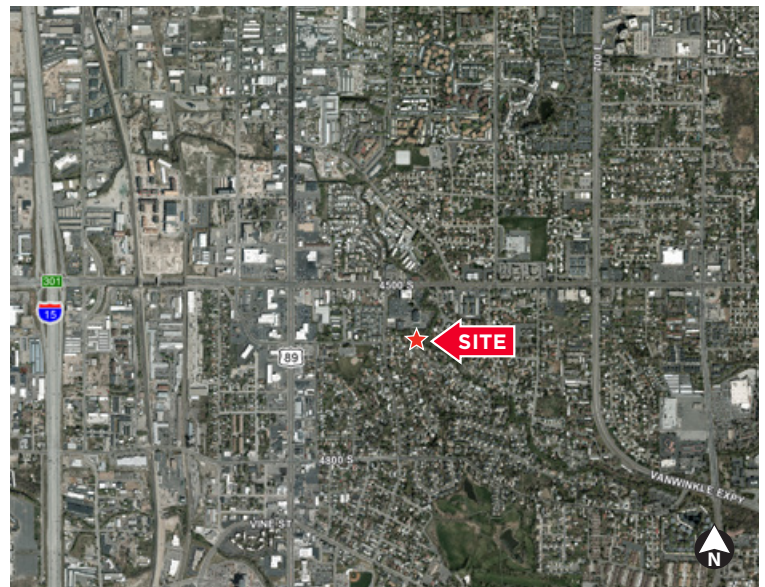
346 East 4500 South / Salt Lake City, Utah



**Sale Price: \$625,000**

## Property Highlights

- Size: 1 acre
- Zoning: G-C (General Commercial - Murray, UT)
- APN: 2206404008
- Located near the busy 4500 South and State Street intersection
- Minutes from I-15 and TRAX
- Big Cottonwood Creek frontage
- Perfect for Medical Office / Office / Residential multi-family



**Ralph Riedel, ccim**  
Executive Director - Investment  
+1 801 303 5466  
rriedel@comre.com

170 South Main Street, Suite 1600  
Salt Lake City, UT 84101  
Main +1 801 322 2000  
Fax +1 801 322 2040  
**comre.com**

*Independently Owned and Operated / A Member of the Cushman & Wakefield Alliance*

Cushman & Wakefield Copyright 2016. No warranty or representation, express or implied, is made to the accuracy or completeness of the information contained herein, and same is submitted subject to errors, omissions, change of price, rental or other conditions, withdrawal without notice, and to any special listing conditions imposed by the property owner(s). As applicable, we make no representation as to the condition of the property (or properties) in question. (path: G:\1 - Projects\Riedel\_Ralph\1 - Flyers\340e4500s)