

OFFICE FOR LEASE

# WESTROADS OFFICE PARK

BUILDING 3

1120 NORTH 103RD PLAZA

Omaha, NE 68114



## PROPERTY INFORMATION

|                    |                    |            |           |
|--------------------|--------------------|------------|-----------|
| + SPACE AVAILABLE: | 4,229 - 26,511 RSF | SUITE 200: | 22,282 SF |
| + LEASE RATE:      | \$17.00 PSF, NNN   | SUITE 203: | 4,229 SF  |
| + ESTIMATED NNN:   | \$8.75 PSF         |            |           |

[www.cbre.com/omaha](http://www.cbre.com/omaha)

**CBRE** | **MEGA**  
Part of the CBRE affiliate network

# OFFICE FOR LEASE BUILDING 3 WESTROADS OFFICE PARK

1120  
NORTH 103RD PLAZA  
Omaha, NE 68114



## FEATURES

- + Large 26,511 SF contiguous suite
- + Underground parking and storage
- + Cizek-built building
- + Agent has equity
- + Building signage available



## BUILDING INFO

- + Constructed of steel, glass and brick
- + General Commercial zoning
- + 100,000 SF building has three floors and 9' ceilings



## CONTACT US

### DALE SCOTT

Executive Vice President  
+1 402 697 5846  
dscott@cbre-mega.com

### CBRE|MEGA

11213 Davenport St, Ste 300  
Omaha, NE 68154  
+1 402 334 8877  
www.cbre.com/omaha

rev011519m © 2019 CBRE|MEGA, Inc. The information contained in this document has been obtained from sources believed reliable. While CBRE|MEGA, Inc. does not doubt its accuracy, CBRE|MEGA, Inc. has not verified it and makes no guarantee, warranty or representation about it. It is your responsibility to independently confirm its accuracy and completeness. Any projections, opinions, assumptions or estimates used are for example only and do not represent the current or future performance of the property. The value of this transaction to you depends on tax and other factors which should be evaluated by your tax, financial and legal advisors. You and your advisors should conduct a careful, independent investigation of the property to determine to your satisfaction the suitability of the property for your needs.

All marks displayed on this document are the property of their respective owners. Photos herein are the property of their respective owners and use of these images without the express written consent of the owner is prohibited.

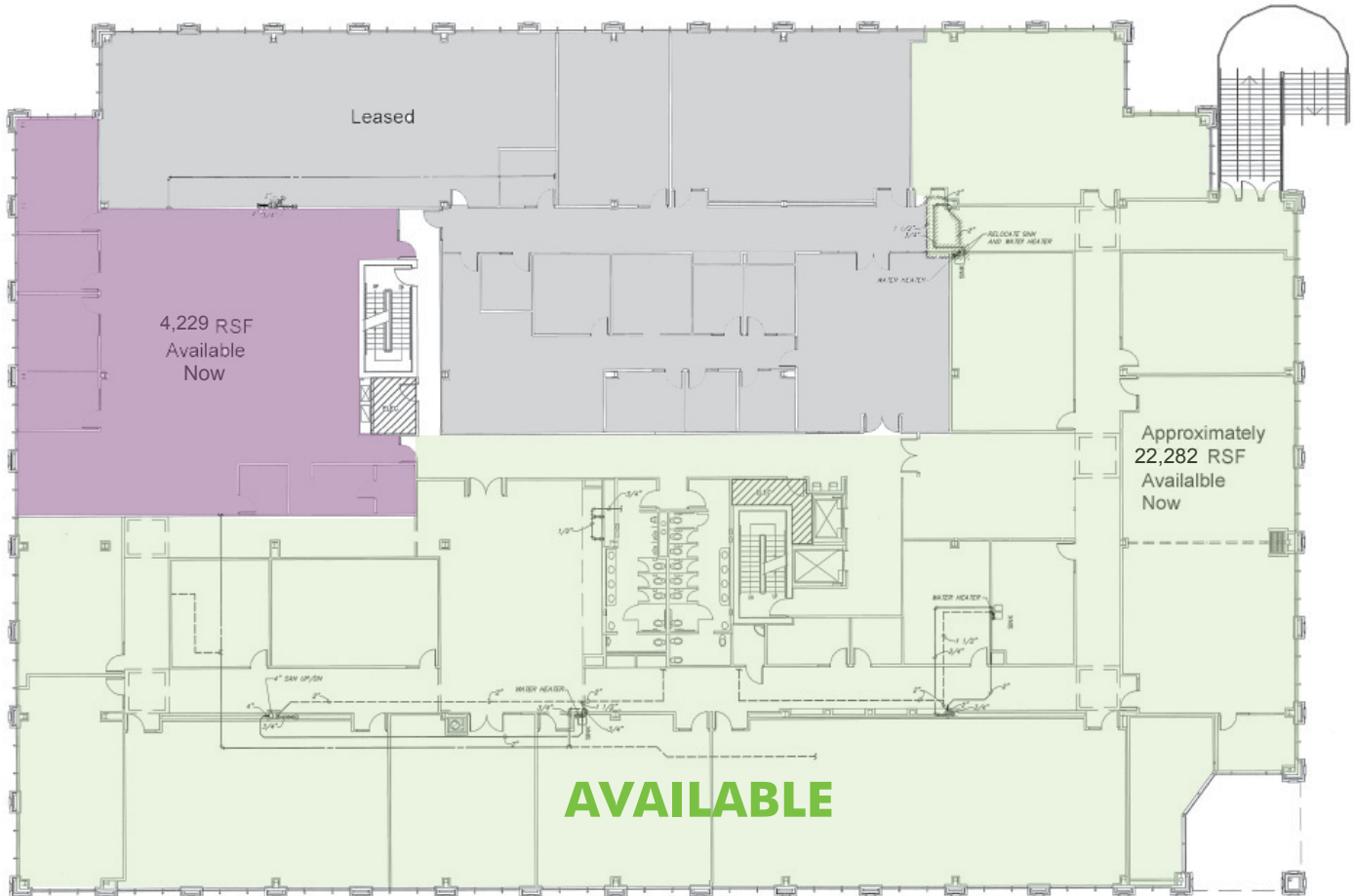
# OFFICE FOR LEASE BUILDING 3 WESTROADS OFFICE PARK

1120  
NORTH 103RD PLAZA  
Omaha, NE 68114



## FLOOR PLAN

WE HEREBY STATE THAT THE INFORMATION CONTAINED HEREIN IS FOR INFORMATIONAL PURPOSES ONLY AND IS NOT INTENDED TO BE USED AS A BASIS FOR ANY INVESTMENT DECISION. THE LANDLORD MAKES NO REPRESENTATION OR WARRANTY AS TO THE ACCURACY OF THE INFORMATION CONTAINED HEREIN. ALL WORK SHALL BE COMPLETED IN ACCORDANCE WITH ALL APPLICABLE GOVERNMENTAL AND LOCAL CODE REQUIREMENTS.



## CONTACT US

### DALE SCOTT

Executive Vice President  
+1 402 697 5846  
dscott@cbre-mega.com

### CBRE|MEGA

11213 Davenport St, Ste 300  
Omaha, NE 68154  
+1 402 334 8877  
www.cbre.com/omaha

[www.cbre.com/omaha](http://www.cbre.com/omaha)

**CBRE|MEGA**  
Part of the CBRE affiliate network