

DORAL CENTRE

OFFICE SPACE FOR LEASE



101 W. 69th Street, Suite 102
Sioux Falls, SD 57108

FOR LEASE

\$16.00 / SF NNN
1,195 SF

SIZE

- 1,195 SF

PRICE

- \$16.00 / SF NNN
- Estimated NNN: \$7.80 / SF

LOCATION

- Doral Centre is located near the Minnesota Avenue and 69th Street intersection, across from Prairie Green Golf Course. Several professional services, shopping and dining options and located nearby.

DESCRIPTION

- The floor plan includes a reception area and four private offices with windows
- Excellent exposure, easy access and beautiful scenery
- Monument signage available
- Common area amenities include access to a conference / training room, restrooms and upscale lobby
- Availability is estimated for January 1, 2021
- Building co-tenants include HPS Lawyers, Guaranteed Rate and Pearson Professional Centers
- Contact Broker for additional information

Find out more at lloydcompanies.com

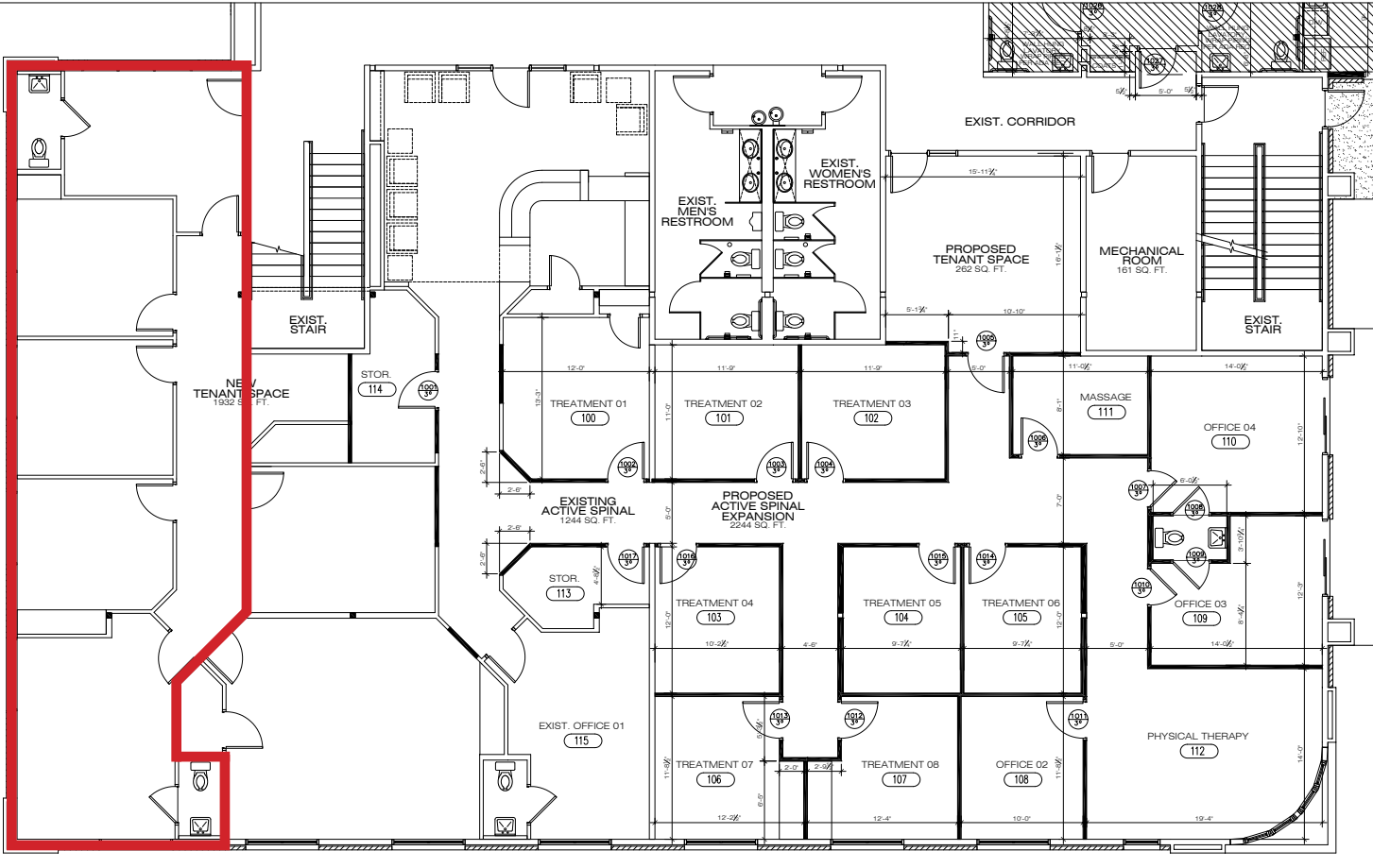
RAQUEL BLOUNT, SIOR

605 728-9092

raquel@lloydcompanies.com



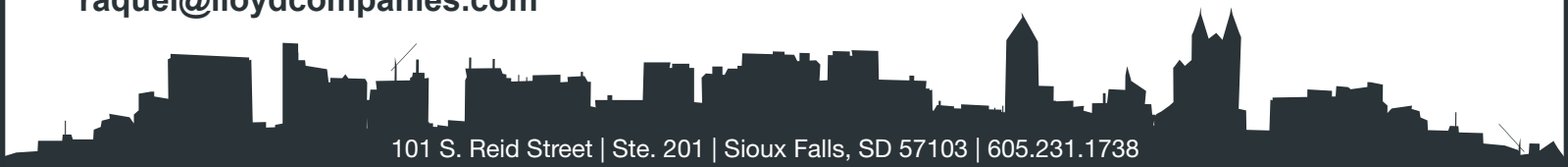
DORAL CENTRE OFFICE SPACE FOR LEASE

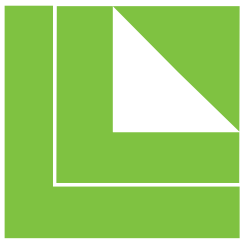


FLOOR PLAN

Concept only;
Subject to change

RAQUEL BLOUNT, SIOR
605 728-9092
raquel@lloydcompanies.com

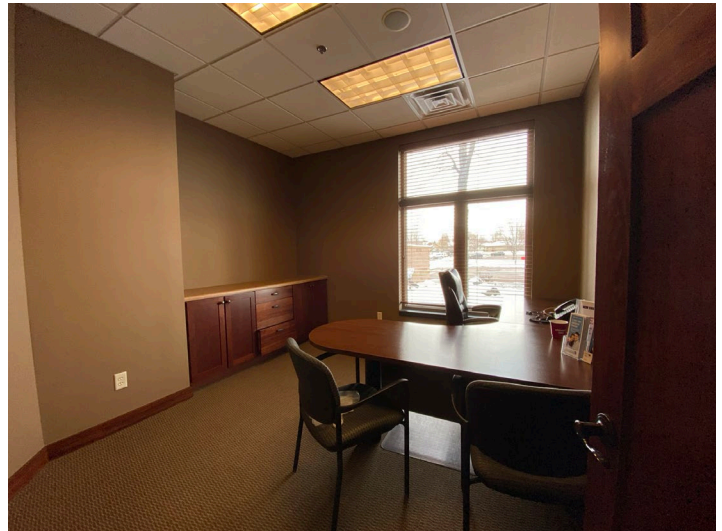
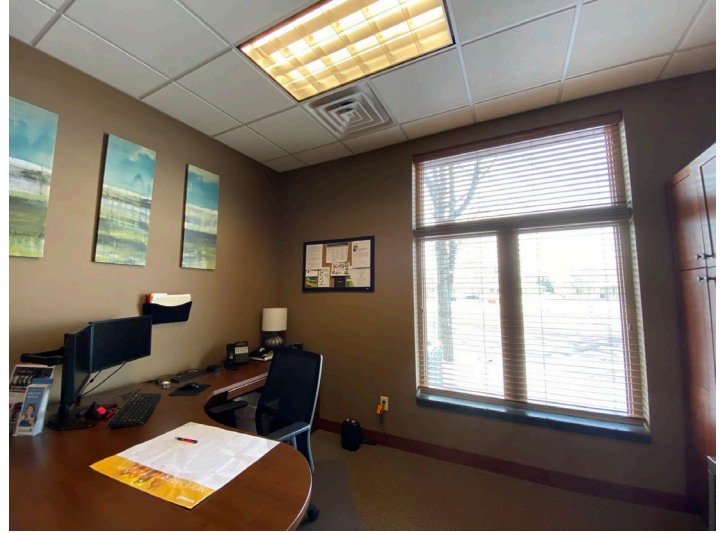




LLOYD
COMPANIES

DORAL CENTRE

OFFICE SPACE FOR LEASE



INTERIOR PICTURES

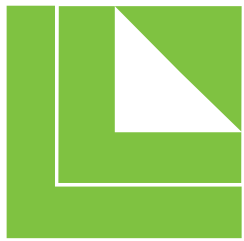
RAQUEL BLOUNT, SIOR

605 **728-9092**

raquel@lloydcompanies.com

101 S. Reid Street | Ste. 201 | Sioux Falls, SD 57103 | 605.231.1738

Information deemed reliable, but not guaranteed.



LLOYD
COMPANIES

DORAL CENTRE

OFFICE SPACE FOR LEASE



EXTERIOR AND MONUMENT SIGNAGE

RAQUEL BLOUNT, SIOR
605 728-9092
raquel@lloydcompanies.com

101 S. Reid Street | Ste. 201 | Sioux Falls, SD 57103 | 605.231.1738

Information deemed reliable, but not guaranteed.

