

22981 HALL ROAD
WOODHAVEN, MICHIGAN

RETAIL FOR SALE OR LEASE
11,451 Square Feet Available



**SIGNATURE
ASSOCIATES**
KNOW SIGNATURE | KNOW RESULTS

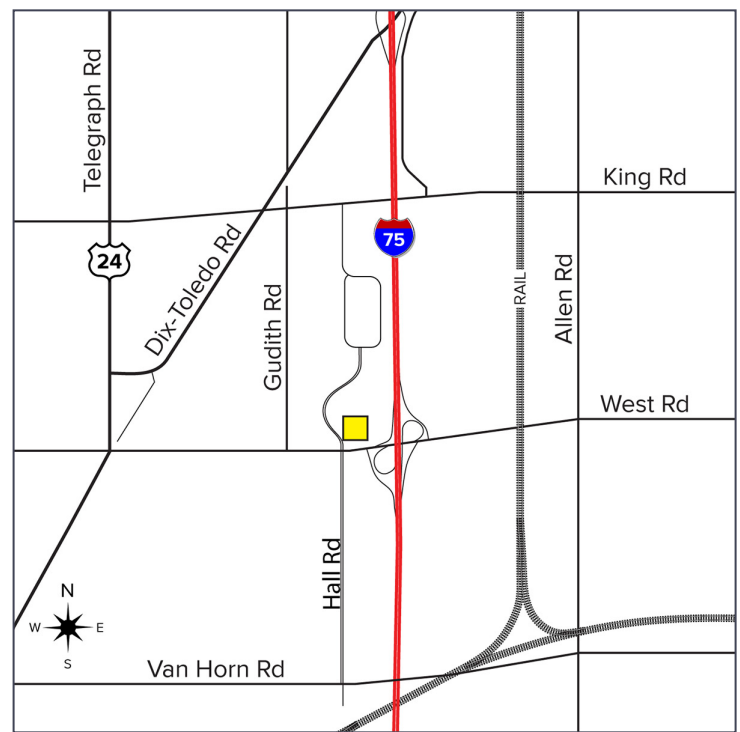
FORMER SAV-ON DRUGS



PROPERTY FEATURES

- 11,451 available square feet
- Zoned B-3
- Situated on 1 acre
- 52+/- parking spaces
- Contact broker for pricing information

Comments: Freestanding former pharmacy. Near I-75 and West Road, making it an ideal location for many retail, office, or storage businesses.



For more information, please contact:

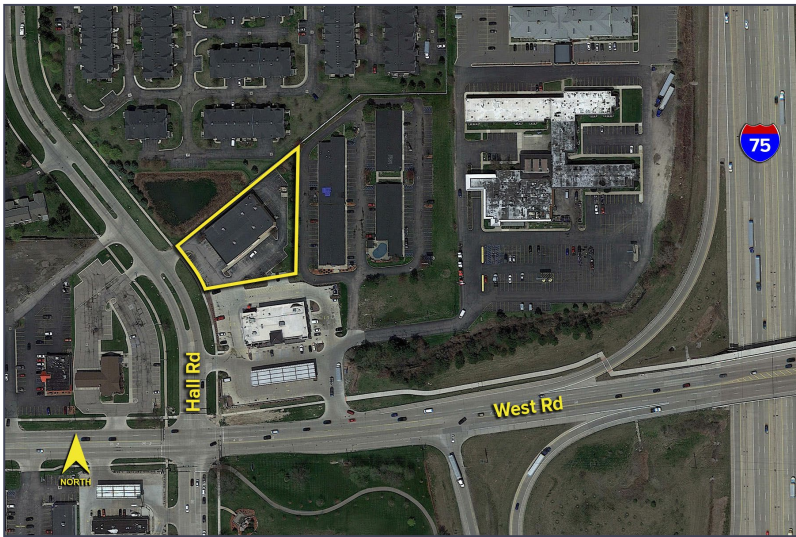
JUSTIN GAFFREY
(248) 799 3143
jgaffrey@signatureassociates.com

SIGNATURE ASSOCIATES
One Towne Square, Suite 1200
Southfield, MI 48076
www.signatureassociates.com

22981 Hall Road – Woodhaven, Michigan

Retail For Sale or Lease

11,451
Square Feet
AVAILABLE

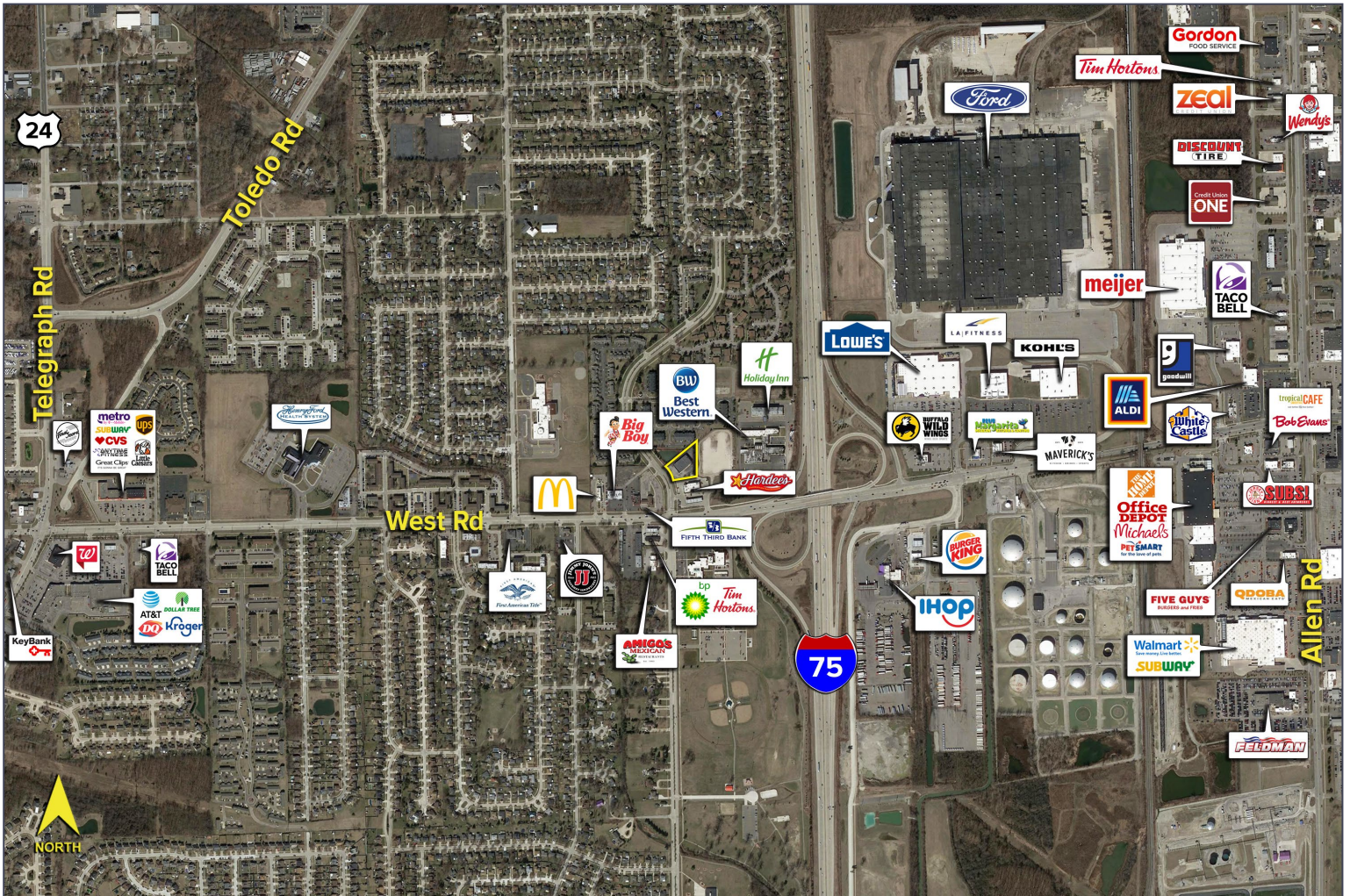


DEMOGRAPHICS

	POPULATION	MED. HH INCOME
1 MILE	9,221	\$58,288
3 MILE	55,278	\$64,430
5 MILE	131,920	\$61,122

TRAFFIC COUNTS (TWO-WAY)

34,231	West Rd. W. of I-75 2-Way
39,768	West Rd. E. of I-75 2-Way
87,630	I-75 N. of West Rd. 2-Way
68,437	I-75 S. of West Rd. 2-Way



For more information, please contact:

JUSTIN GAFFREY

(248) 799 3143

jgaffrey@signatureassociates.com

SIGNATURE ASSOCIATES

One Towne Square, Suite 1200

Southfield, MI 48076

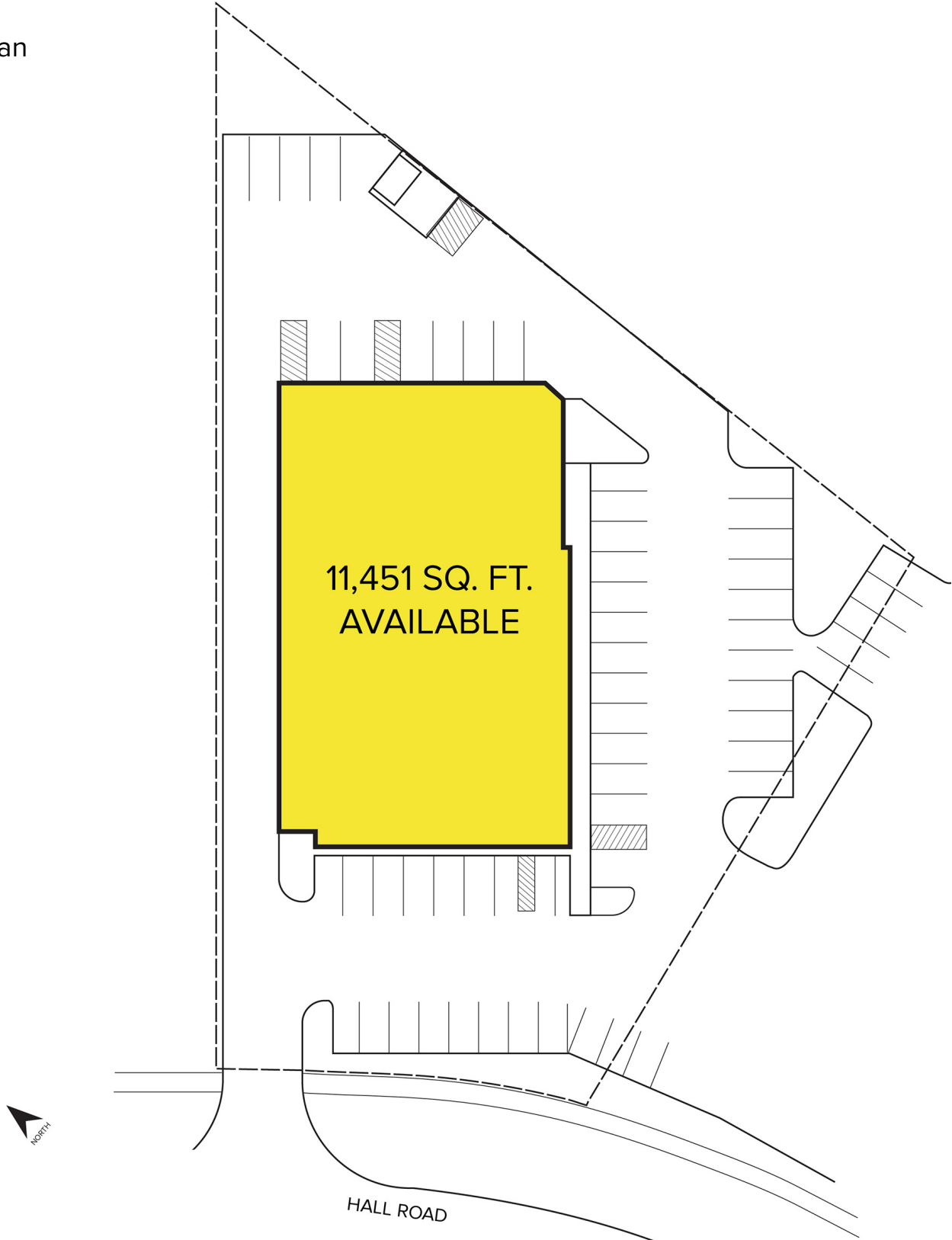
www.signatureassociates.com

22981 Hall Road – Woodhaven, Michigan

Retail For Sale or Lease

11,451
Square Feet
AVAILABLE

Site Plan



For more information, please contact:

JUSTIN GAFFREY
(248) 799 3143
jgaffrey@signatureassociates.com

SIGNATURE ASSOCIATES
One Towne Square, Suite 1200
Southfield, MI 48076
www.signatureassociates.com

Information is subject to verification and no liability for errors or omissions is assumed. Price is subject to change and listing withdrawal.