

FOR SALE

# MILL CREEK LAND SITE

17200  
BOTHELL-EVERETT HWY  
Mill Creek, WA 98012

Asking Price: \$1,600,000



## PROPERTY FEATURES

- + ±4.56 acres
- + Excellent access and visibility to Bothell-Everett Highway
- + Zoned: Business Park (BP), City of Mill Creek
- + Ability to accommodate a variety of uses
- + Over 30,000 vehicles per day/traffic count
- + ±300,000 population within a five mile radius
- + \$88,000 Median Household Income within a one mile radius
- + Parcel 00602000000700

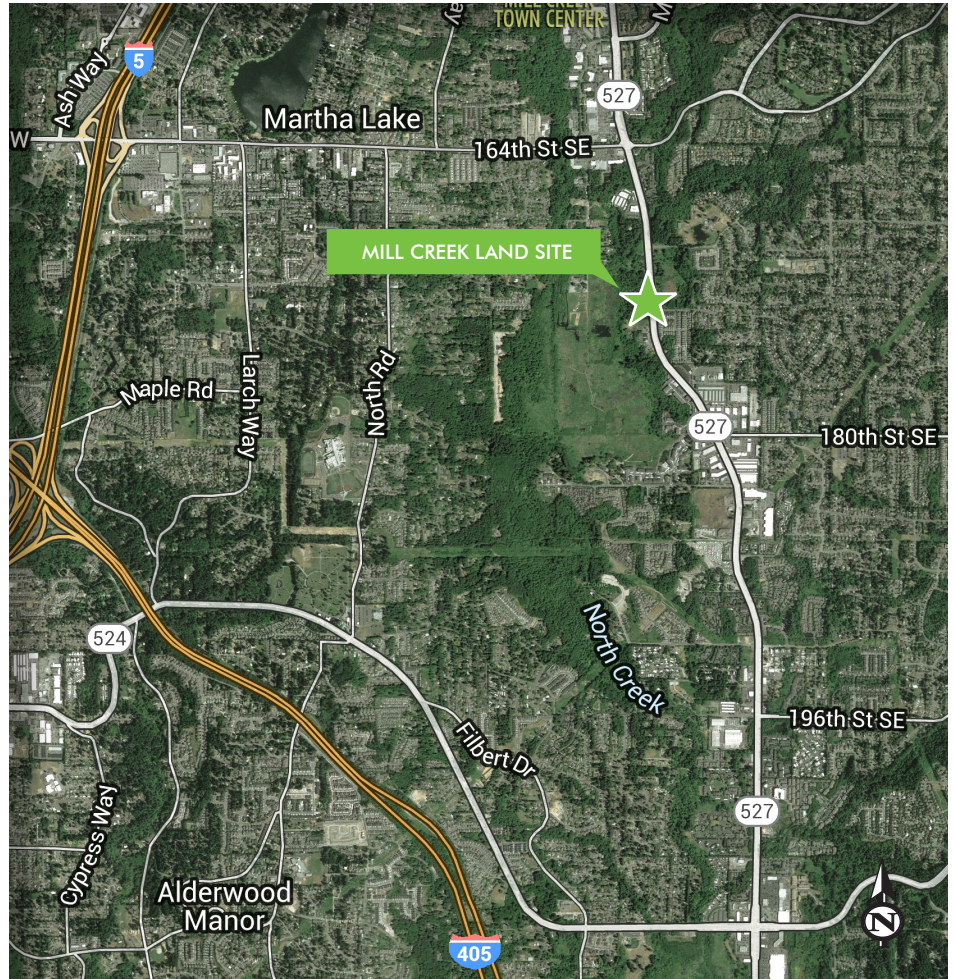


[www.cbre.com/bellevue](http://www.cbre.com/bellevue)

**CBRE**

# FOR SALE MILL CREEK LAND SITE

17200  
BOTHELL-EVERETT HWY  
Mill Creek, WA 98012



## CONTACT US

### ERIK LARSON

Senior Associate  
+1 425 462 6954  
erik.larson@cbre.com

### RIC BRANDT

Senior Vice President  
+1 425 462 6901  
ric.brandt@cbre.com

### JOHN BAUER

Senior Vice President  
+1 425 462 6906  
john.bauer@cbre.com

© 2016 CBRE, Inc. This information has been obtained from sources believed reliable. We have not verified it and make no guarantee, warranty or representation about it. Any projections, opinions, assumptions or estimates used are for example only and do not represent the current or future performance of the property. You and your advisors should conduct a careful, independent investigation of the property to determine to your satisfaction the suitability of the property for your needs. CBRE and the CBRE logo are service marks of CBRE, Inc. and/or its affiliated or related companies in the United States and other countries. All other marks displayed on this document are the property of their respective owners. Photos herein are the property of their respective owners and use of these images without the express written content of the owner is prohibited. JRG 12-9-16

[www.cbre.com/bellevue](http://www.cbre.com/bellevue)

**CBRE**