

***"Fast Facts"***

**Great Corner Location:**

In area of Professional Offices, Close to Downtown Business District, and St. Anthony's Hospital

**Land Mass:**  
**20,700 Sq. Ft.**  
**(.48 of an Acre)**

180 Feet of Frontage on Dr. MLK Jr. St No.  
115 Feet of Frontage on 11th Ave. No.

**Improvements:**

**7,000 Sq. Ft.**  
Single Story Cement Block Building  
Latest Use a Kidney Dialysis Center

**Zoning:**

**CCT-1**  
Allowing Various Types of Commercial Uses

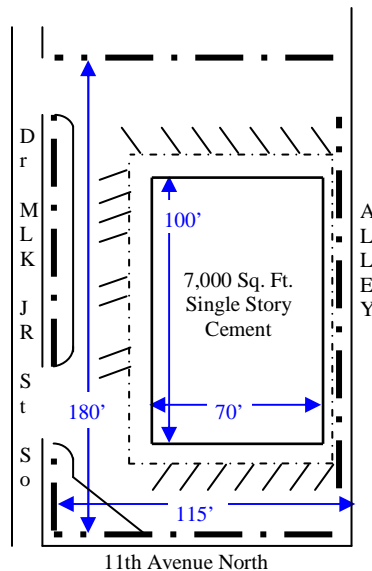


**A 7,000 Sq. Ft. Office/Retail Facility**

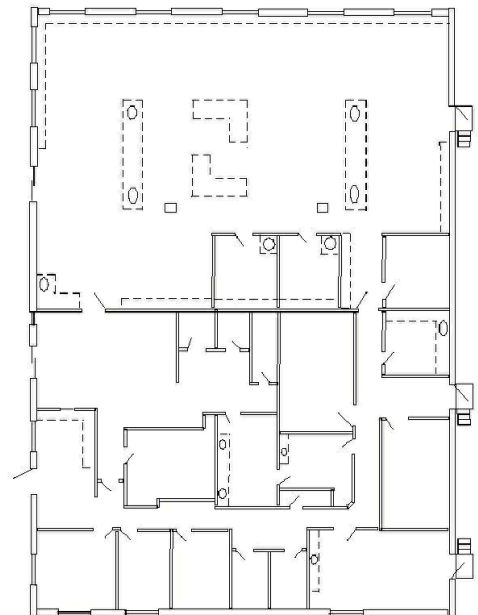
1101 Dr. Martin Luther King Jr. St. No.  
Saint Petersburg, FL 33701

**Offered For Sale @ .....\$750,000**

**Offered For Lease @ .....\$12.00 a Sq. Ft "NNN"**



**Site Layout**



**Approximate Drawing of Floor Plan**



**Appointments for Viewing May Be Obtained by Contacting John Allison, Broker/Associate**  
**Office: (727) 563-0498**  
**Cell: (727) 580-8414**  
**E-mail: johnallison@tampabay.rr.com**

The information contained in this overview was obtained from the Owner, various governmental and private agencies at the time of preparation, but is not warranted or guaranteed in anyway. It is submitted for your review subject to errors, omissions, change of price, other terms, prior sale, or withdrawal from the market without notice. The Owner, or CR COMMERCIAL REALTY, INC. make no warranties, either expressed or implied as to the completeness or accuracy of any information contained herein.